



Core Campus Development Team

- Marc Lifshin - Core Campus
- Eric Grimm - Core Campus
- David Nelson - DRW

Zoning Attorney

- Lazarus, Silvyn & Bangs PC

Civil Engineer

- Grenier Engineering

Core Campus Management Team

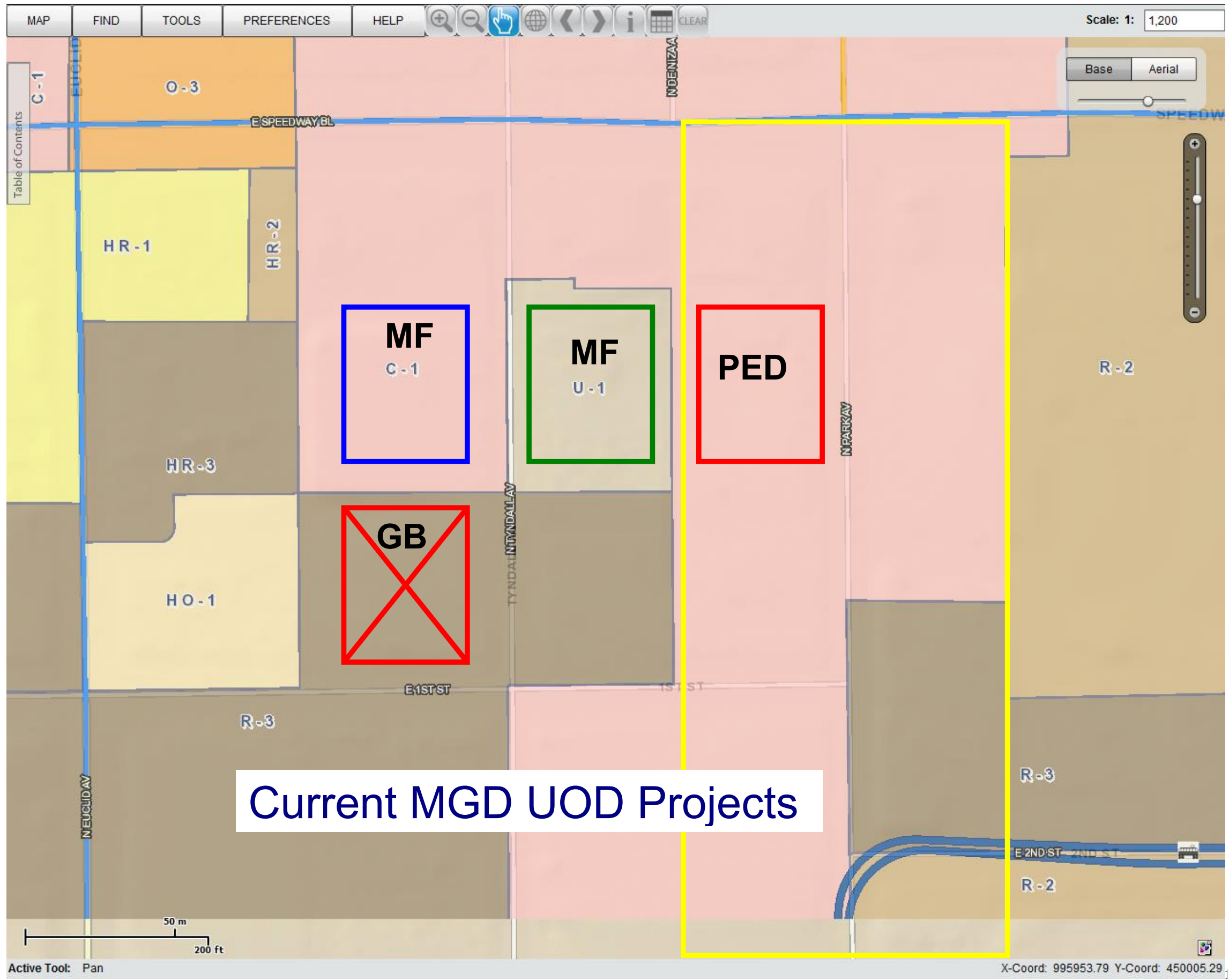
- Brian Neiswender - Core Campus
- Ben Modleski - Core Campus

Architect

- Antunovich Associates

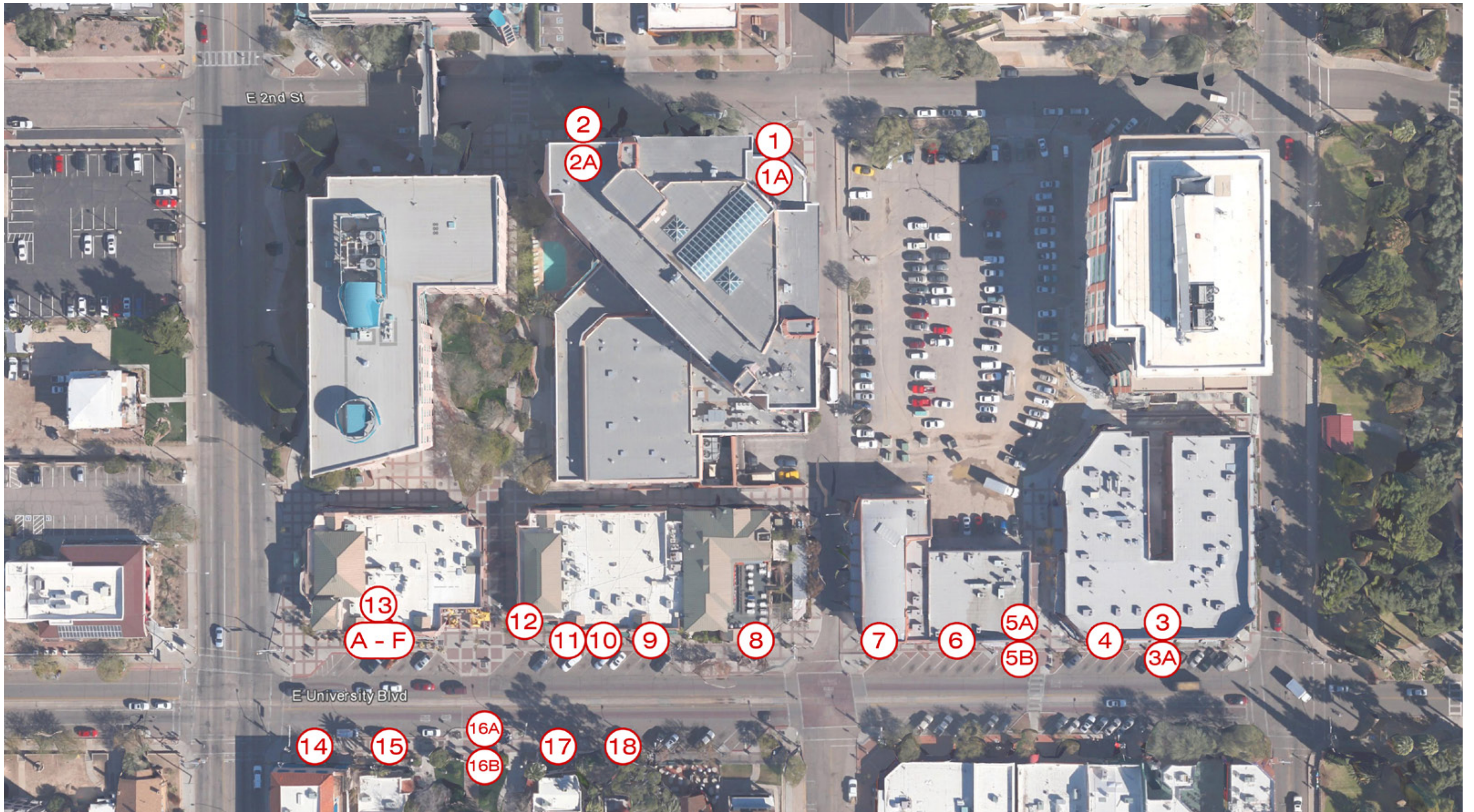
Landscape Architect

- Ensign Design, LLC



KEY

- MF** Multi Family Residential District
- PED** Pedestrian District
- GB** General Business District



1



1A



2



2A



3



3A

4



5



5A



5B



6



7

8



9



10



11



12



13

13A



13B



13C



13D



13E



13F

14



15



16



16A



16B



17

18



1A



2



2A



1 SOUTH ELEVATION
001 SCALE: 1/16"=1'-0"

1
004

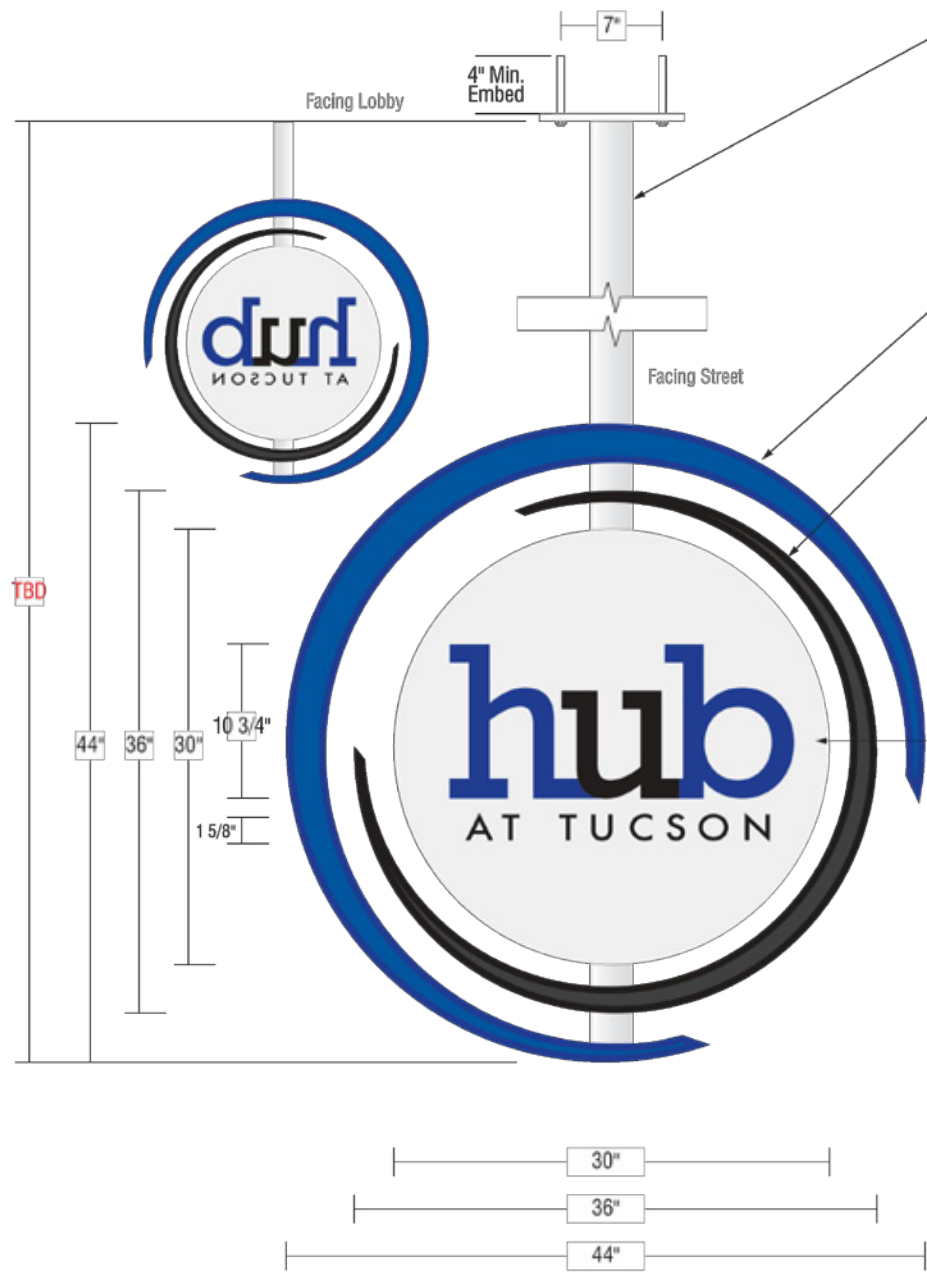
1
008

ANTUNOVICH ASSOCIATES
ARCHITECTURE PLANNING INTERIOR DESIGN
224 WEST HURON STREET CHICAGO, ILLINOIS 60654
312.266.1126 FAX: 312.266.7123

Title: Building Elevations Preliminary Signage Package
Project: HUB AT TUCSON

PSP001
Scale: NOTED
March 04, 2014

S:\C - TUCSON\TUCSON\BIBETH\A\01 EXTERIOR ELEVATIONS - SIGNAGE PACKAGE.DWG



MOUNTING DETAILS

ANCHORS
 (Qty 4) 1/2" S.S
 Hilti Hit-HY 200 Epoxy Anchors

PLATE
 10" x 10" x 1/2" Aluminum Plate
 Painted; Satin Finish
 White (MP)

PIPE
 3" Dia. x 1/4" Wall Thickness Aluminum Pipe
 Painted; Satin Finish
 White (MP)

INTERNALLY ILLUMINATED CABINETS (ACCENTS)

FACES
 .150 Clear Lexan
 High Density Digital Print (Applied 1st Surface)
 White Translucent (Cast)
 Luster Laminate (Cast)
 Dark Blue (TBD) ■
 Black Perforated Vinyl ■
 70% Diffuser Applied 2nd Surface

RETAINERS
 .125 Routed Aluminum
 Painted; Satin Finish
 (Dark Blue TBD) ■ (Black MP) ■

RETURNS
 8" Deep .063 Aluminum
 Painted; Satin Finish
 (Dark Blue TBD) ■ (Black MP) ■

ILLUMINATION
 Mount to .063 Aluminum Baffle
 GE Tetra MAX 7100K White

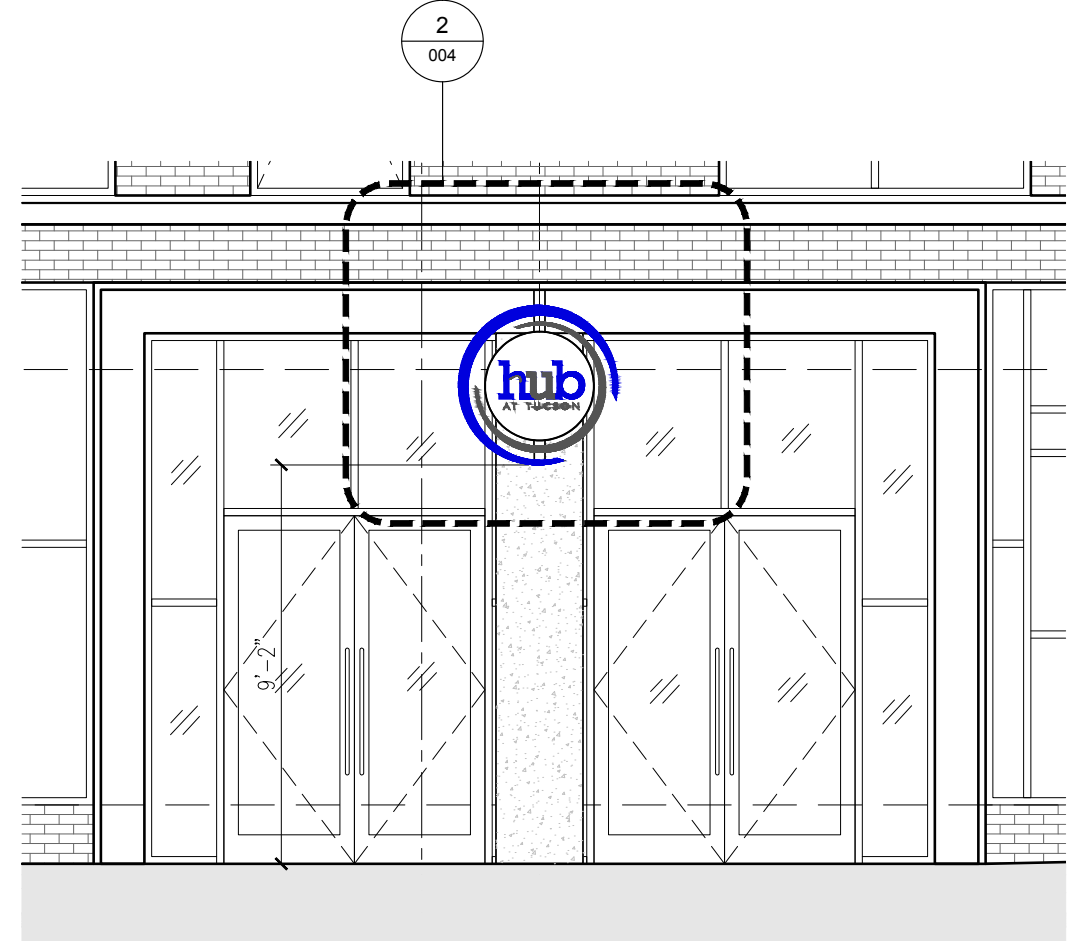
INTERNALLY ILLUMINATED CABINET (MAIN IDENTITY)

FACES
 .125 Aluminum Construction
 Painted; Satin Finish
 White (SW)

"HUB" COPY
 1/2" Clear Acrylic Push Through
 High Density Digital Print Applied 1st Surface
 White Translucent (Cast)
 Luster Laminate (Cast)
 Dark Blue (TBD) ■
 Black Perforated Vinyl ■
 70% Diffuser Applied 2nd Surface

"ON CAMPUS" COPY
 Routed Text
 Backed with 1/8" Clear Acrylic
 Black Perforated Vinyl ■ Applied 1st Surface
 70% Diffuser Applied 2nd Surface

ILLUMINATION
 Mount to .063 Aluminum Baffle
 GE Tetra MAX 7100K White
 Main Cabinet to House LED Transformer
 House Power will Connect to Junction Box at Base of Mounting Pipe



1 SOUTH ELEVATION - RESIDENTIAL ENTRANCE
 001 004 SCALE: 1/4"=1'-0"

2 RESIDENTIAL ENTRANCE SIGN DETAIL
 001 004 SCALE: 1/4"=1'-0"

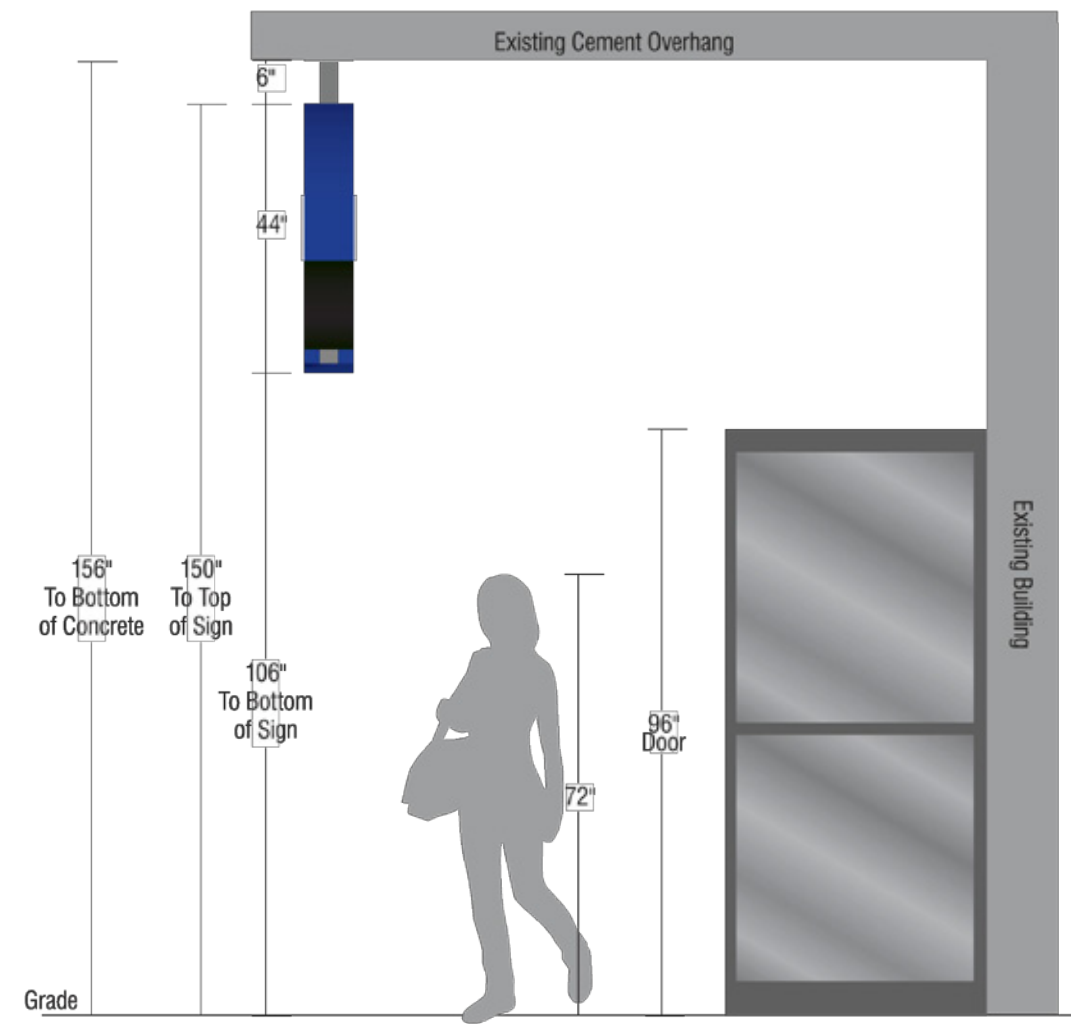
ANTUNOVICH ASSOCIATES ARCHITECTURE PLANNING INTERIOR DESIGN 224 WEST HURON STREET CHICAGO, ILLINOIS 60654 312.266.1126 FAX: 312.266.7123	Title:	Signage Details Preliminary Signage Package	PSP004 Scale: NOTED March 04, 2014
	Project:	HUB AT TUCSON	

S:\CC - TUCSON\TUCSON\RESIDENTIAL\EXTERIOR ELEVATIONS - SIGNAGE PACKAGE.DWG

2 Entry Cabinet Signage (Double Sided)



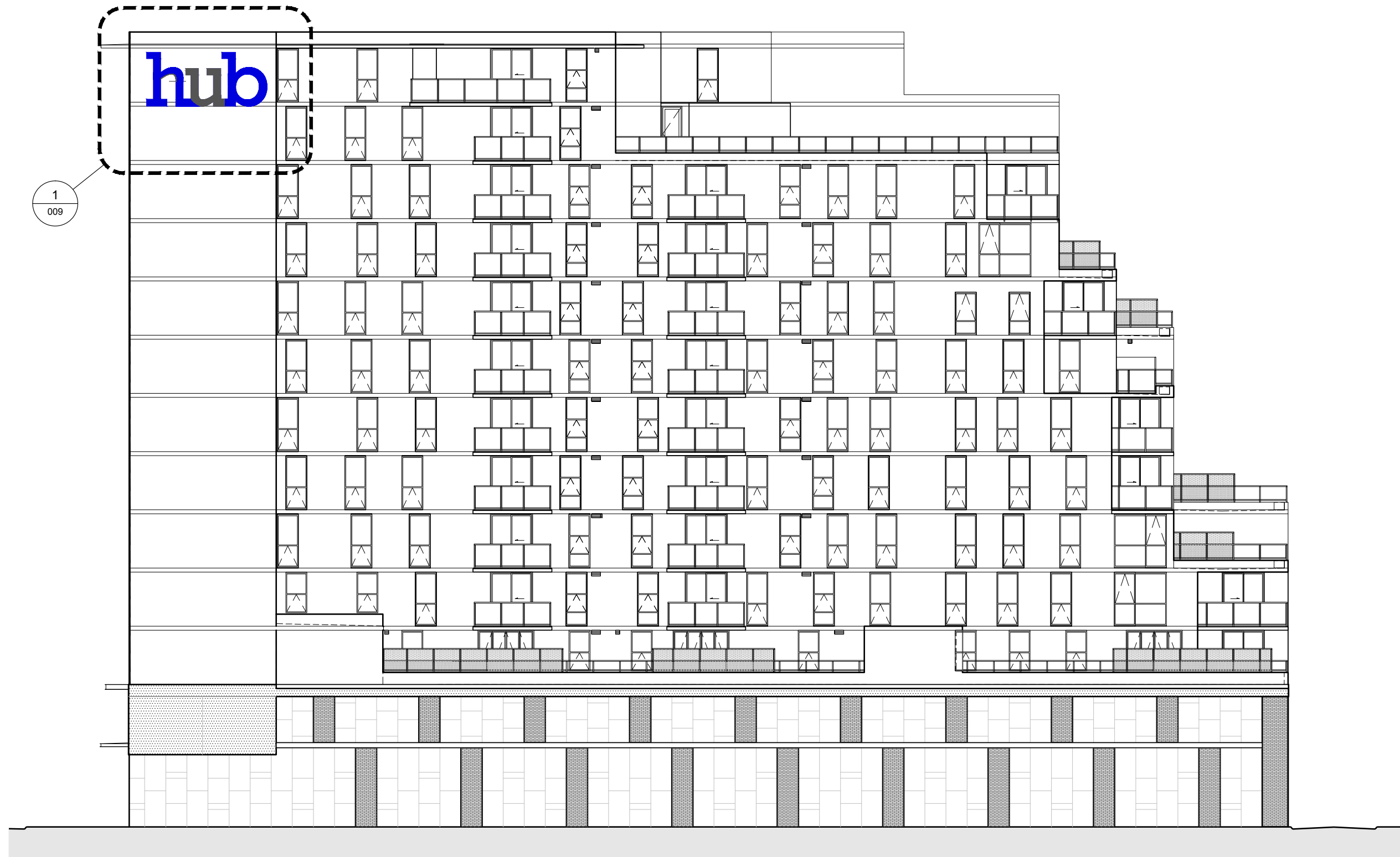
Ⓑ Night View



1 RESIDENTIAL ENTRANCE SIGN DETAILS
001 005 SCALE: 1/2"=1'-0"

ANTUNOVICH ASSOCIATES ARCHITECTURE PLANNING INTERIOR DESIGN 224 WEST HURON STREET CHICAGO, ILLINOIS 60654 312.266.1126 FAX: 312.266.7123	Title: Signage Details Preliminary Signage Package	PSP005 Scale: NOTED
	Project: HUB AT TUCSON	March 04, 2014

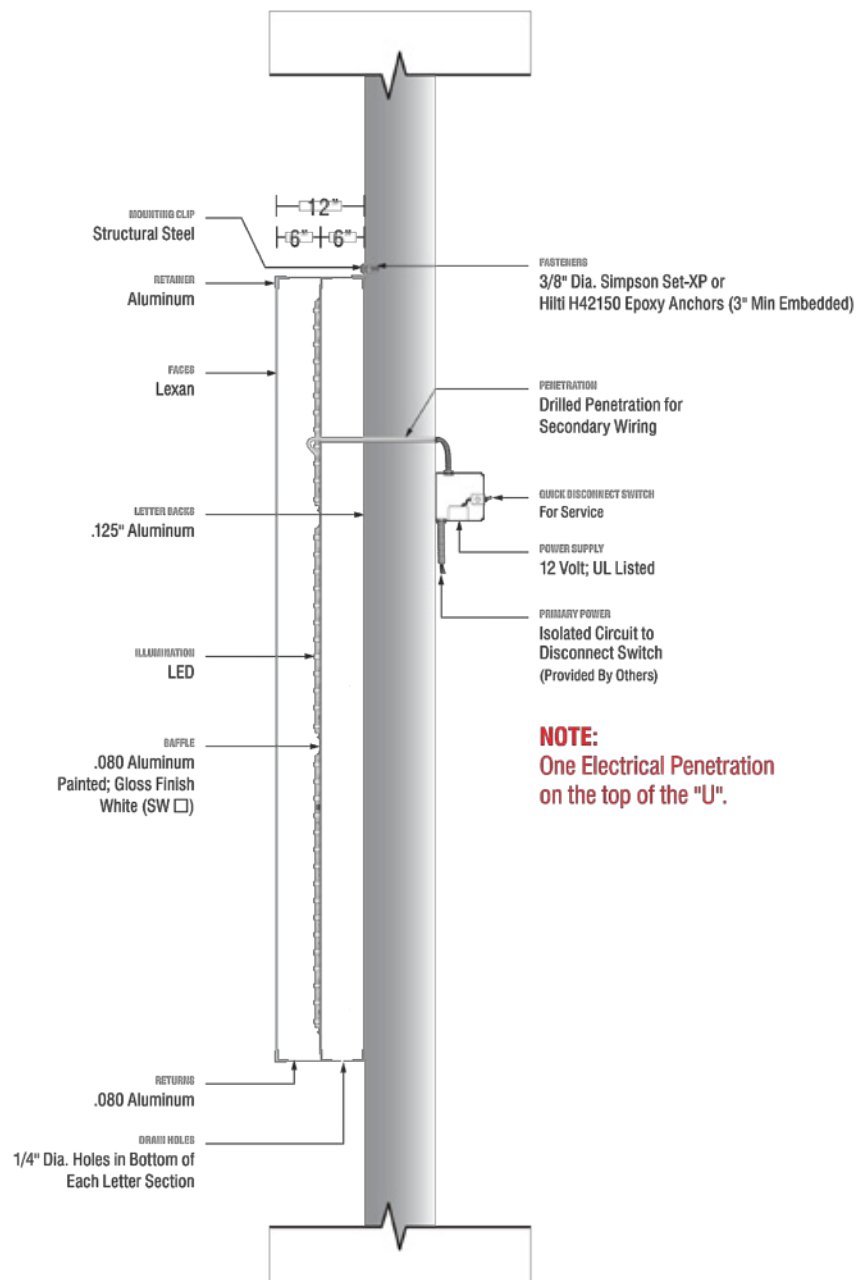
S:\C - TUCSON\TUCSON\BIBETH\ASU\EXTERIOR ELEVATIONS - SIGNAGE PACKAGE.DWG



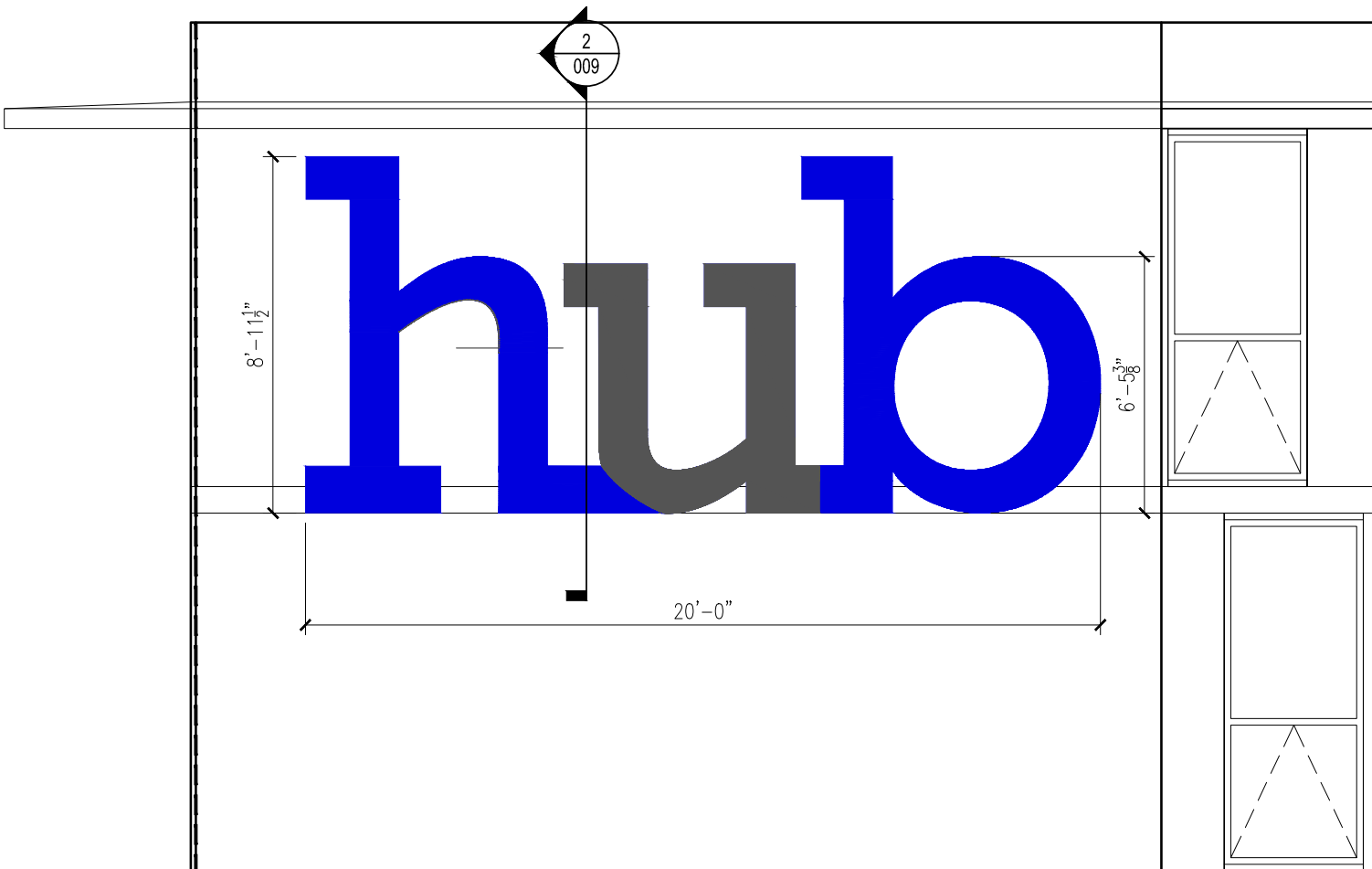
1 NORTH ELEVATION
003 SCALE: 1/16"=1'-0"

ANTUNOVICH ASSOCIATES
ARCHITECTURE PLANNING INTERIOR DESIGN
224 WEST HURON STREET CHICAGO, ILLINOIS 60654 312.266.1126 FAX: 312.266.7123

Title: Building Elevations Preliminary Signage Package	PSP003
Project: HUB AT TUCSON	Scale: NOTED March 04, 2014



NOTE:
One Electrical Penetration on the top of the "U".



2 NORTH ELEVATION SIGN SECTION DETAIL
001 009 SCALE: 1/2"=1'-0"

1 NORTH ELEVATION
001 009 SCALE: 1/4"=1'-0"

S:\C - TUCSON\TUCSON\HUB\HUB\HUB\EXT\EXTERIOR ELEVATIONS - SIGNAGE PACKAGE.DWG

ANTUNOVICH ASSOCIATES ARCHITECTURE PLANNING INTERIOR DESIGN 224 WEST HURON STREET CHICAGO, ILLINOIS 60654 312.266.1126 FAX: 312.266.7123	Title: Signage Details Preliminary Signage Package	PSP009 Scale: NOTED
	Project: HUB AT TUCSON	March 04, 2014





1 SOUTH ELEVATION
001 SCALE: 1/16"=1'-0"

ANTUNOVICH ASSOCIATES
ARCHITECTURE PLANNING INTERIOR DESIGN
224 WEST HURON STREET CHICAGO, ILLINOIS 60654
312.266.1126 FAX: 312.266.7123

Title: Building Elevations Preliminary Signage Package
Project: HUB AT TUCSON

PSP001
Scale: NOTED
March 04, 2014

S:\C:\TUCSON\TUCSON\BIBETH\A\01 EXTERIOR ELEVATIONS - SIGNAGE PACKAGE.DWG



1 EAST ELEVATION
002 SCALE: 1/16"=1'-0"

ANTUNOVICH ASSOCIATES
ARCHITECTURE PLANNING INTERIOR DESIGN
224 WEST HURON STREET CHICAGO, ILLINOIS 60654
312.266.1126 FAX: 312.266.7123

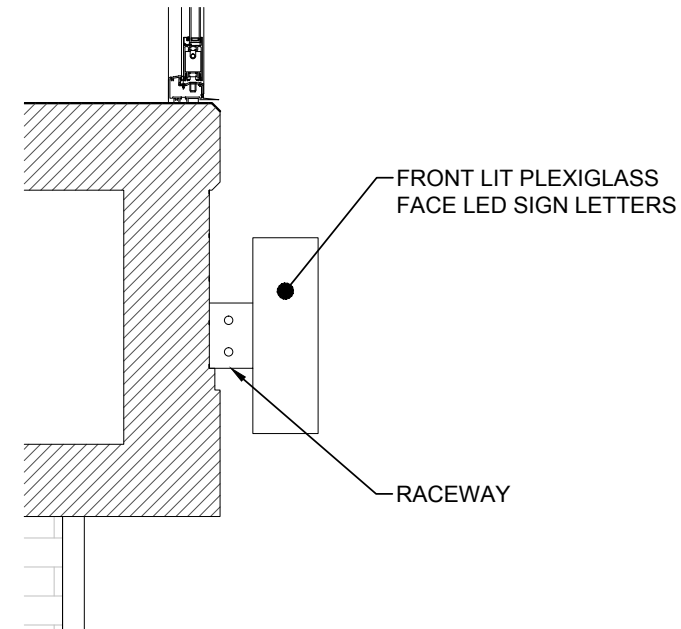
Title:	Building Elevations Preliminary Signage Package	PSP002
Project:	HUB AT TUCSON	Scale: NOTED March 04, 2014

S:\C - TUCSON\TYNALL\CAMBETH\ASU\EXTERIOR ELEVATIONS - SIGNAGE PACKAGE.DWG

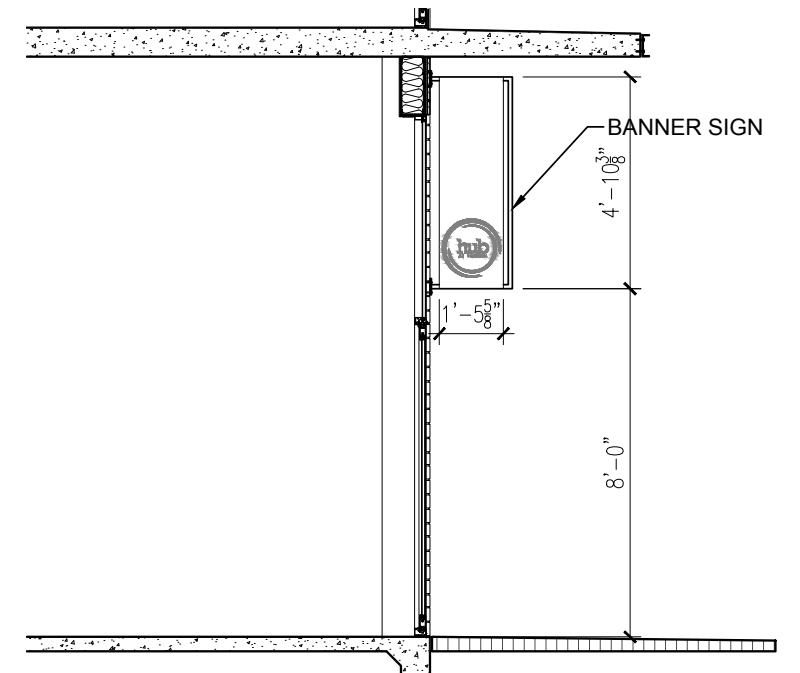
NOTE:

1) THE FIRST FLOOR OF THE BUILDING IS A MULTI-TENANT RETAIL FLOOR, TENANT SIGNAGE SIZES AND LOCATIONS WILL BE DEPENDANT ON FINAL DEMISED LEASE PLAN. A SIGNAGE "ZONE" IS SHOWN ON THESE ELEVATIONS WHICH INDICATES AN AREA FOR POSSIBLE SIGN LOCATIONS. MAXIMUM OF 3 SQUARE FEET OF SIGNAGE PER 1 LINEAR FOOT OF STREET FRONTAGE PER SECTION 3-76 OF THE TUCSON CITY SIGN CODE.

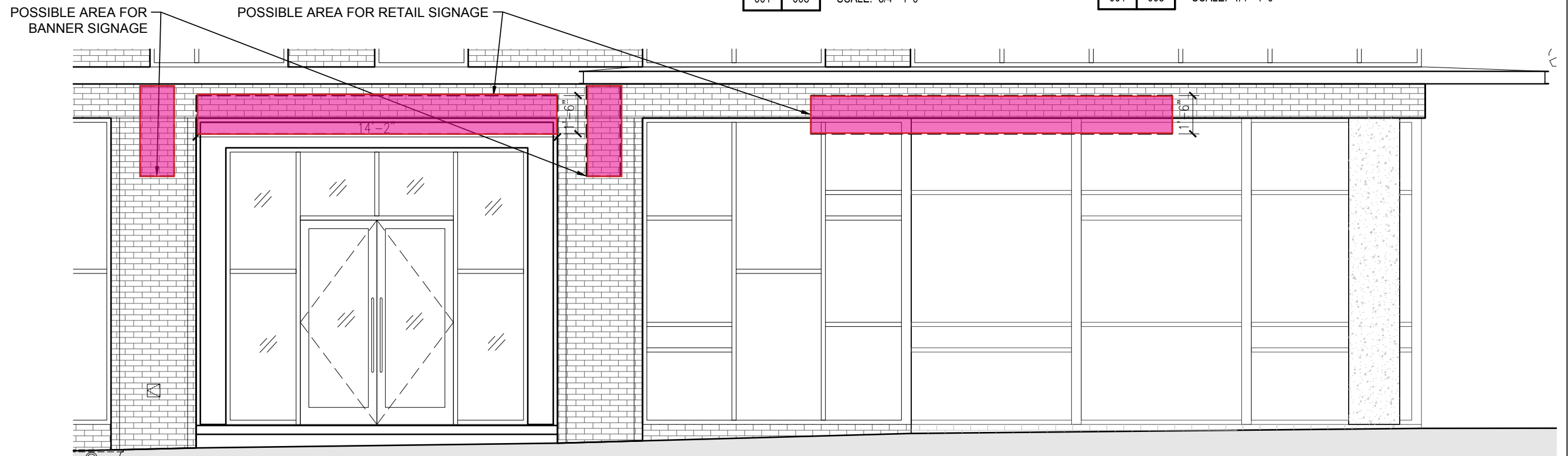
2) SIGN TYPE TO INCLUDE CONTINUOUS RACEWAY WITH FRONT LIT PLEXIGLASS FACE LED LETTERS. LANDLORD APPROVAL REQUIRED FOR FIANL SIGN DESIGN



3 SIGN DETAIL
001 008 SCALE: 3/4"=1'-0"



2 BANNER SIGNAGE OPTION
001 008 SCALE: 1/4"=1'-0"



1 TYPICAL RETAIL ENTRANCE
001 008 SCALE: 1/4"=1'-0"

ANTUNOVICH ASSOCIATES
ARCHITECTURE PLANNING INTERIOR DESIGN
224 WEST HURON STREET CHICAGO, ILLINOIS 60654
312.266.1126 FAX: 312.266.7123

Title:	Signage Details Preliminary Signage Package	PSP008
Project:	HUB AT TUCSON	Scale: NOTED March 04, 2014

S:\C:\TUCSON\TYPICAL\BRIEF\AS\1\EXTERIOR ELEVATIONS- SIGNAGE PACKAGE.DWG

Questions