

LIST OF DESIGN CHANGES

A - STREET LEVEL LANDSCAPE DESIGN RECONFIGURATION

- A1 - Textured/colored warning strips before crossing driveway
- A2 - Pavement color/texture variation to notify pedestrian of crossing driveway
- A3 - Layout of ride share waiting area
- A4 - Cove lighting in the drive thru area

B - BUILDING FACADE ADJUSTMENT

- B1 - South bands made all red
- B2 - East Entry bands made all red
- B3 - East side bands made all white to help emphasize entry
- B4 - Murals added to north facade along pedestrian path
- B5 - Additional section of metal panel and band added to the top of the southeast corner to lighten up the corner







Aspire Tucson 2

Concept Design View - E 1st St & N Park Ave



Aspire Tucson 2

Concept Design View - E 1st St & N Park Ave



Aspire Tucson 2

Concept Design View - E 1st St & N Park Ave



Aspire Tucson 2

Concept Design View - N Park Ave & E 1st St



Aspire Tucson 2

Concept Design View - N Park Ave & E 1st St



Aspire Tucson 2

Concept Design View - Alley & N Park Ave





Arizona History Museum



Aspire Tucson 2

Concept Design View - N Park Ave Mid-air



Arizona History Museum



Aspire Tucson 2

Concept Design View - N Park Ave Mid-air



















Arizona History Museum



Aspire Tucson 2

Concept Design View - N Park Ave



Arizona History Museum

B1

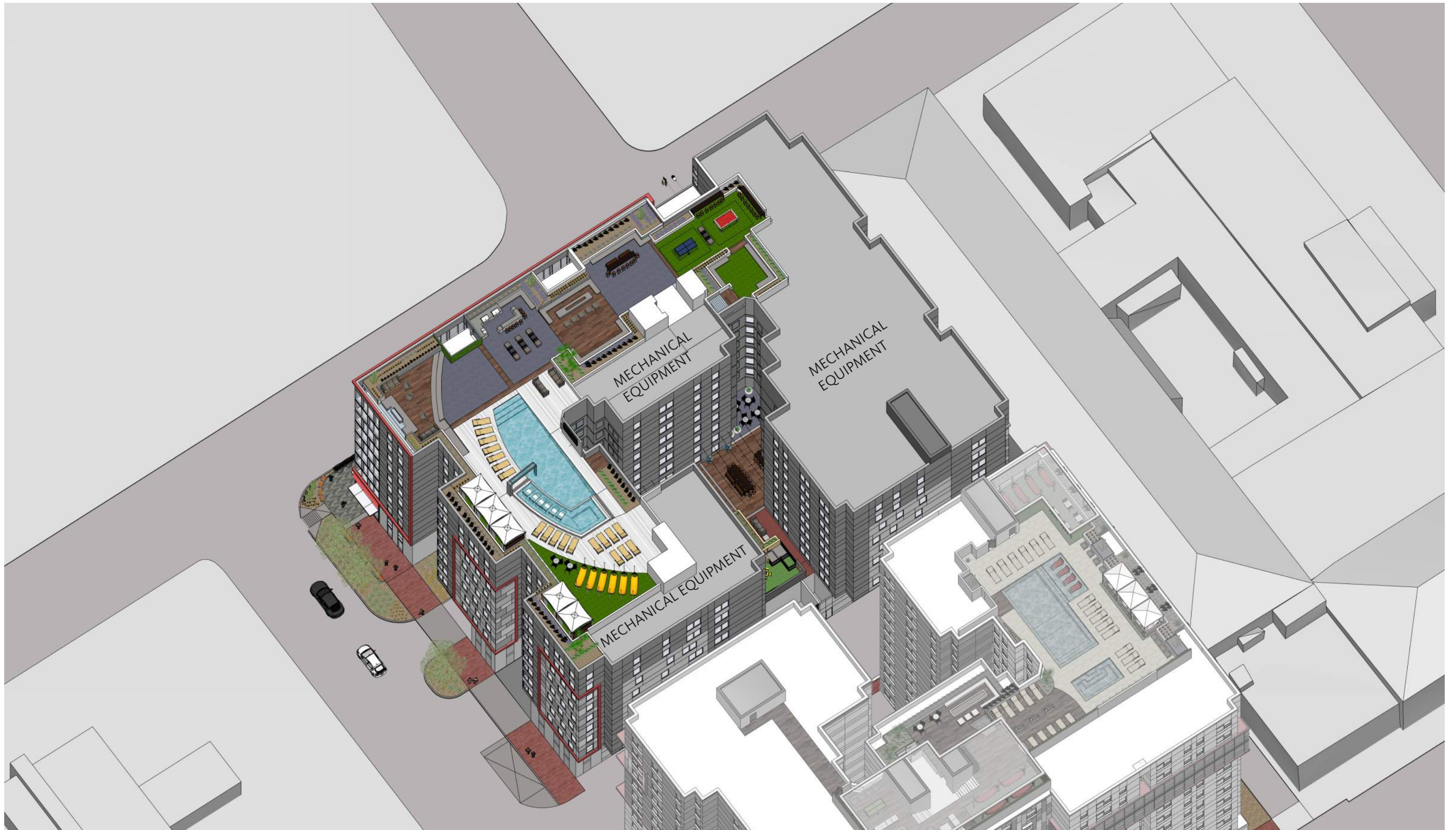
B5

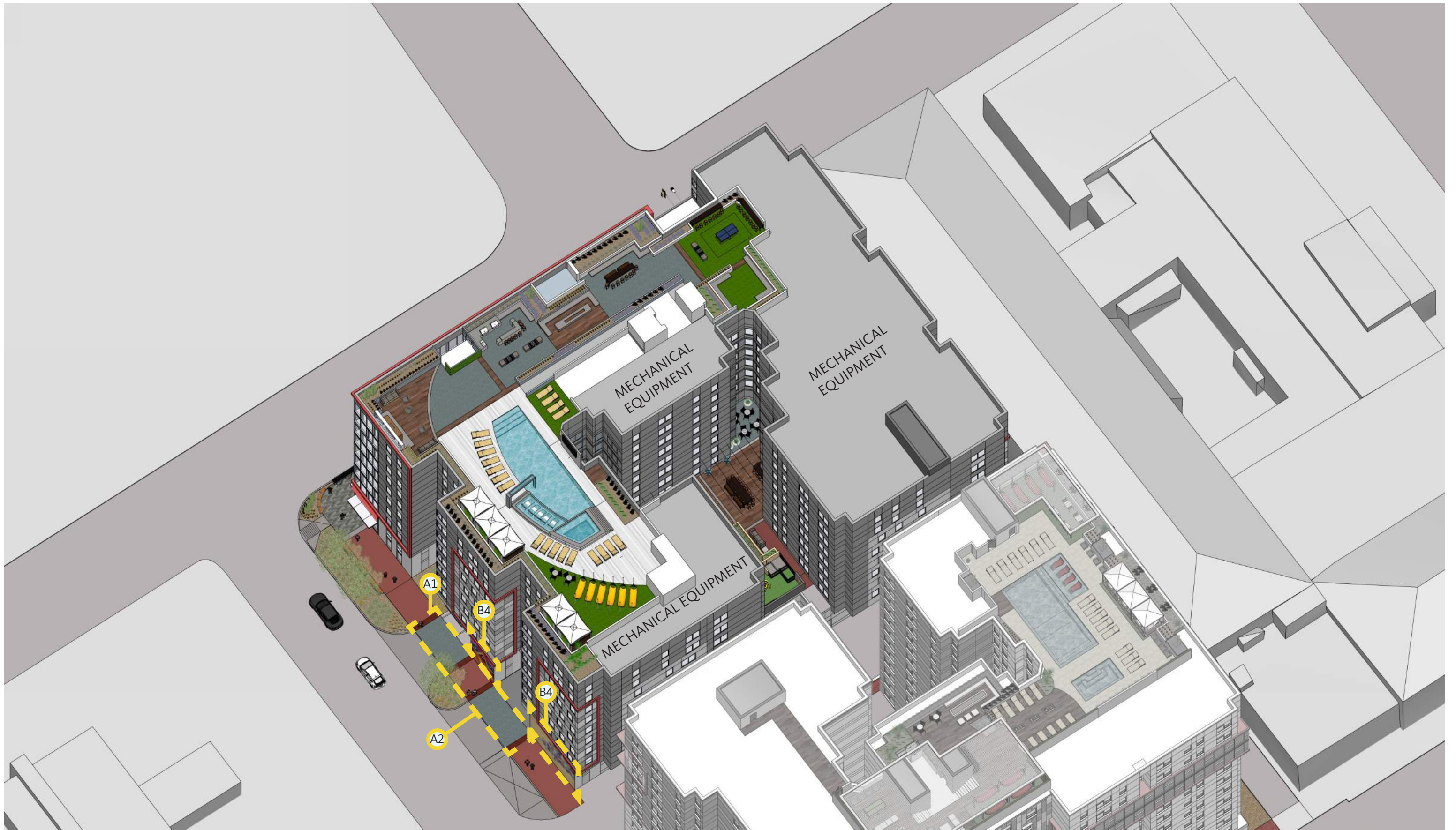
B3

B2

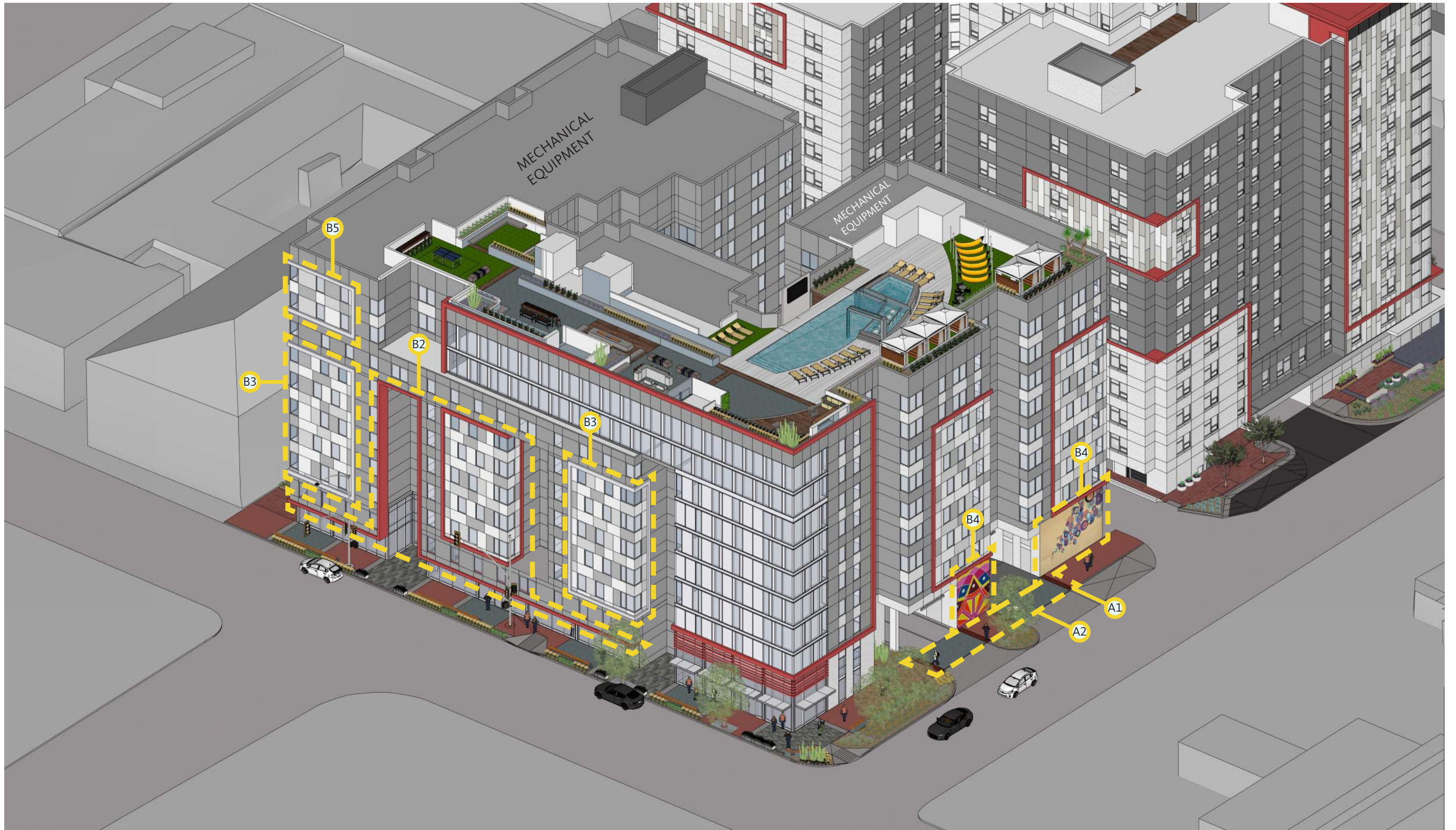
B3

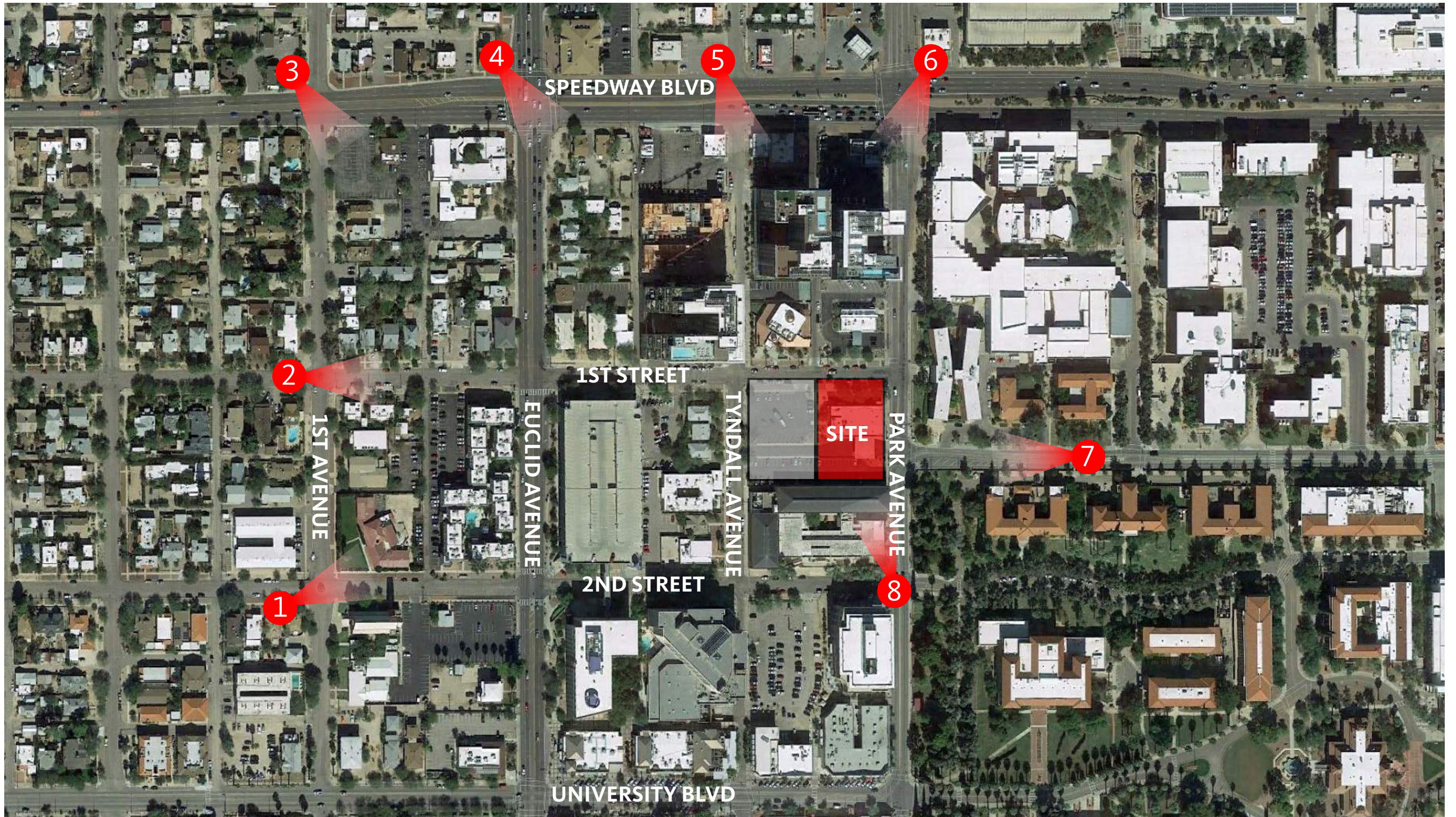




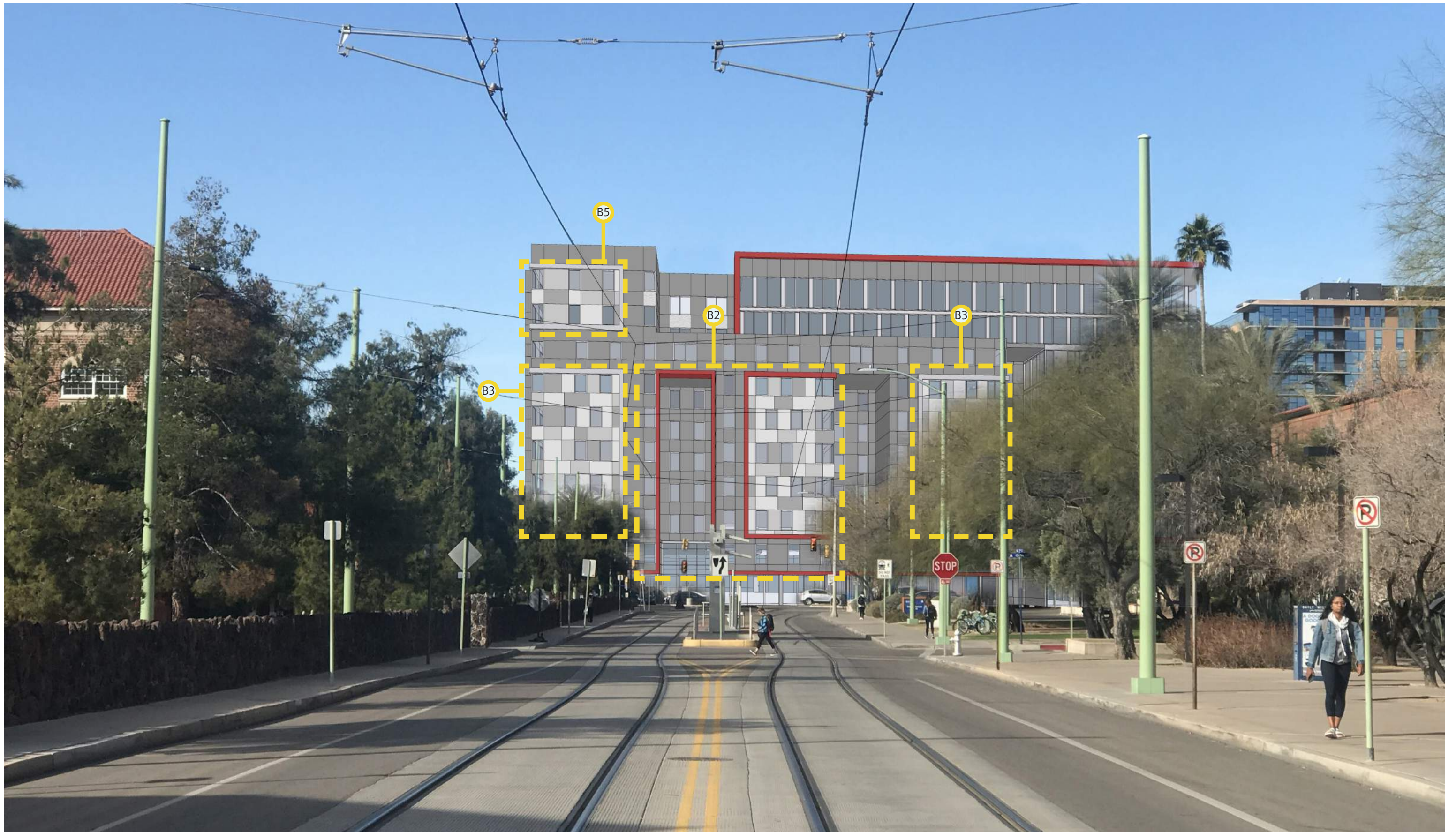


















EXTERIOR MATERIAL LEGEND

- | | | | |
|---|---|--|--|
| 1. Stucco facade, dark grey color with textured finish. | 6. White metal panel cladding. Matte finish. | 11. Rooftop mechanical units screened by #11. | 17. Decorative metal panel transformer gate. |
| 2. Architectural Thermal Windows, with low E glass; Silver Finished Mullion. | 7. Light grey metal panel cladding. Matte finish. | 12. Stucco facade, dark grey color with textured finish. | |
| 3. Stucco facade, white color with textured finish. | 8. Dark grey metal panel cladding. Matte finish. | 13. Stucco facade control joints. | |
| 4. Stucco facade control joints. | 9. Stucco facade, white color with textured finish. | 14. Stucco frame, light grey elastomeric paint finish. | |
| 5. Stucco frame, light grey elastomeric finish with red elastomeric paint finish facing metal panels. | 10. Stucco screening wall/ parapet/ noise barrier. | 15. Metal panel cladding. Same configuration as #6 - #8. | |
| | | 16. Drive thru exit with do not enter signage. | |



EXTERIOR MATERIAL LEGEND

- | | | | |
|---|---|--|--|
| 1. Stucco facade, dark grey color with textured finish. | 6. White metal panel cladding. Matte finish. | 11. Rooftop mechanical units screened by #11. | 17. Decorative metal panel transformer gate. |
| 2. Architectural Thermal Windows, with low E glass; Silver Finished Mullion. | 7. Light grey metal panel cladding. Matte finish. | 12. Stucco facade, dark grey color with textured finish. | |
| 3. Stucco facade, white color with textured finish. | 8. Dark grey metal panel cladding. Matte finish. | 13. Stucco facade control joints. | |
| 4. Stucco facade control joints. | 9. Stucco facade, white color with textured finish. | 14. Stucco frame, light grey elastomeric paint finish. | |
| 5. Stucco frame, light grey elastomeric finish with red elastomeric paint finish facing metal panels. | 10. Stucco screening wall/ parapet/ noise barrier. | 15. Metal panel cladding. Same configuration as #6 - #8. | |



EXTERIOR MATERIAL LEGEND

- | | | |
|--|---|---|
| 1. Stucco facade, dark grey color with textured finish. | 6. Light grey metal panel cladding. Matte finish. | 11. Metal panel cladding. Same configuration as #5 - #7. |
| 2. Architectural Thermal Windows, with low E glass; Silver Finished Mullion. | 7. Dark grey metal panel cladding. Matte finish. | 12. Stucco frame, light grey elastomeric paint finish. |
| 3. Stucco facade control joints. | 8. Stucco facade, white color with textured finish. | 13. Stucco facade, dark grey color with textured finish. |
| 4. Stucco frame, light grey elastomeric paint finish. | 9. Stucco screening wall/ parapet/ noise barrier. | 14. Architectural Thermal Windows, with low E glass; Silver Finished Mullion. |
| 5. White metal panel cladding. Matte finish. | 10. Rooftop mechanical units screened by #9. | |



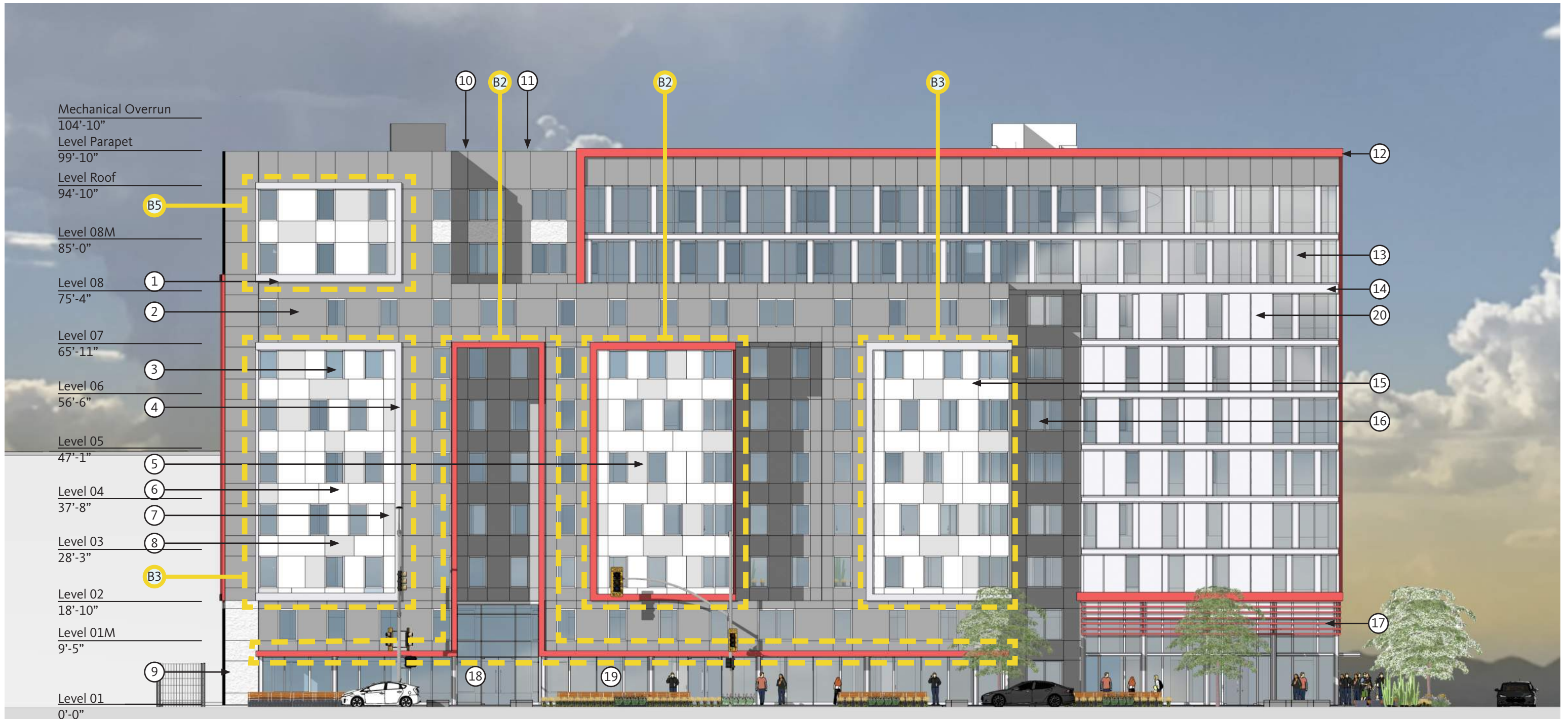
EXTERIOR MATERIAL LEGEND

- | | | |
|--|---|---|
| 1. Stucco facade, dark grey color with textured finish. | 6. Light grey metal panel cladding. Matte finish. | 11. Metal panel cladding. Same configuration as #5 - #7. |
| 2. Architectural Thermal Windows, with low E glass; Silver Finished Mullion. | 7. Dark grey metal panel cladding. Matte finish. | 12. Stucco frame, light grey elastomeric paint finish. |
| 3. Stucco facade control joints. | 8. Stucco facade, white color with textured finish. | 13. Stucco facade, dark grey color with textured finish. |
| 4. Stucco frame, light grey elastomeric paint finish. | 9. Stucco screening wall/ parapet/ noise barrier. | 14. Architectural Thermal Windows, with low E glass; Silver Finished Mullion. |
| 5. White metal panel cladding. Matte finish. | 10. Rooftop mechanical units screened by #9. | |



EXTERIOR MATERIAL LEGEND

- | | | | |
|--|---|---|--------------------------------------|
| 1. Stucco facade control joints. | 7. Light grey metal panel cladding. Matte finish. | 13. Full height architectural window wall system; Aluminum with low E glass. | 18. Glass door with aluminum frame. |
| 2. Stucco facade, dark grey color with textured finish. | 8. Dark grey metal panel cladding. Matte finish. | 14. Window wall cap. Silver Finished Mullion. | 19. Clear glass at pedestrian level. |
| 3. Architectural Thermal Windows, with low E glass; Silver Finished Mullion. | 9. Stucco facade, white color with textured finish. | 15. Metal panel cladding. Same configuration as #6 - #8. | |
| 4. Stucco frame, light grey elastomeric paint finish. | 10. Stucco screening wall/ parapet/ noise barrier. | 16. Architectural Thermal Windows, with low E glass; Silver Finished Mullion. | |
| 5. Metal panel cladding. Same configuration as #6 - #8. | 11. Rooftop mechanical units screened by #10. | 17. Metal frame structure with metal slat shading. | |
| 6. White metal panel cladding. Matte finish. | 12. Stucco frame, red elastomeric paint finish. | | |



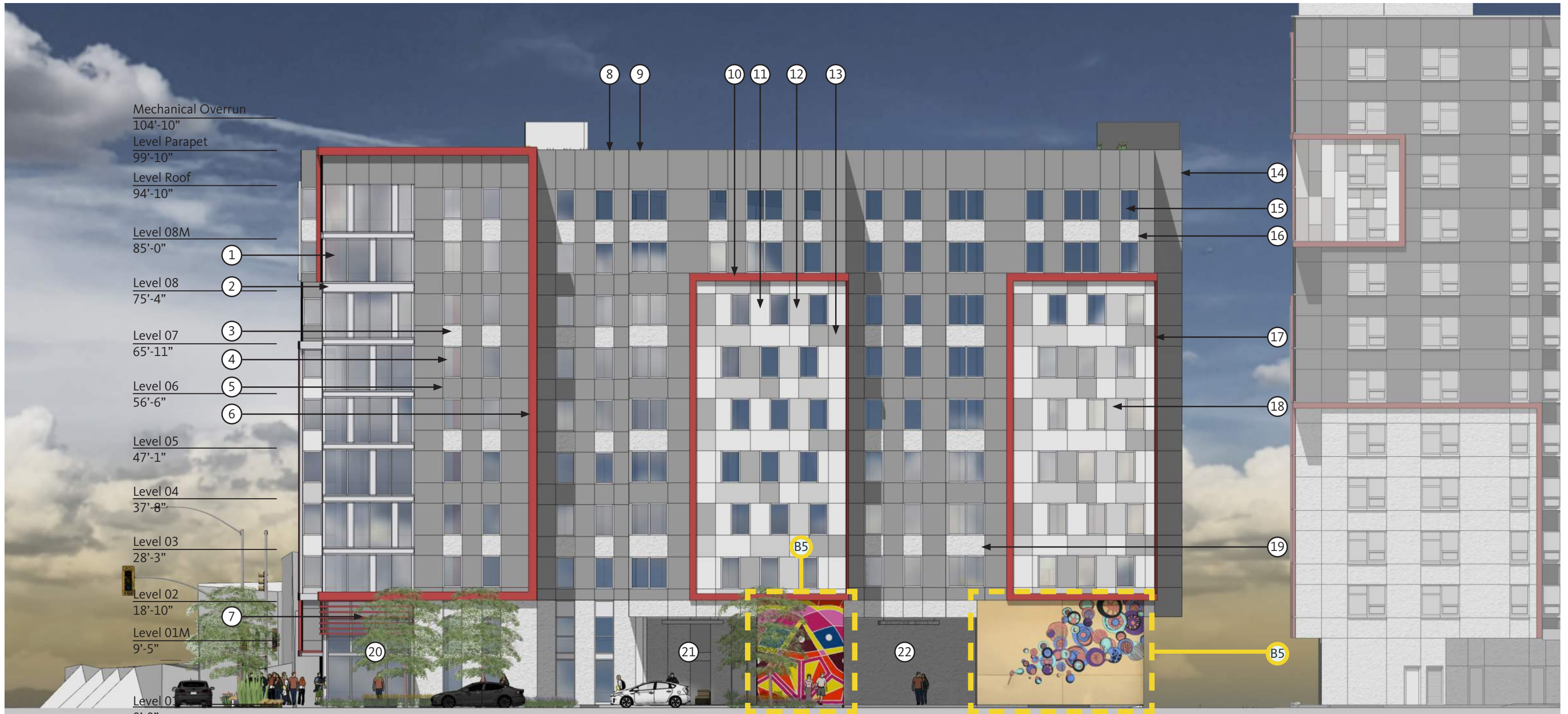
EXTERIOR MATERIAL LEGEND

- | | | | |
|--|---|---|--------------------------------------|
| 1. Stucco facade control joints. | 7. Light grey metal panel cladding. Matte finish. | 13. Full height architectural window wall system; Aluminum with low E glass. | 18. Glass door with aluminum frame. |
| 2. Stucco facade, dark grey color with textured finish. | 8. Dark grey metal panel cladding. Matte finish. | 14. Window wall cap. Silver Finished Mullion. | 19. Clear glass at pedestrian level. |
| 3. Architectural Thermal Windows, with low E glass; Silver Finished Mullion. | 9. Stucco facade, white color with textured finish. | 15. Metal panel cladding. Same configuration as #6 - #8. | 20. Light grey spandrel. |
| 4. Stucco frame, light grey elastomeric paint finish. | 10. Stucco screening wall/ parapet/ noise barrier. | 16. Architectural Thermal Windows, with low E glass; Silver Finished Mullion. | |
| 5. Metal panel cladding. Same configuration as #6 - #8. | 11. Rooftop mechanical units screened by #10. | 17. Metal frame structure with metal slat shading. | |
| 6. White metal panel cladding. Matte finish. | 12. Stucco frame, red elastomeric paint finish. | | |



EXTERIOR MATERIAL LEGEND

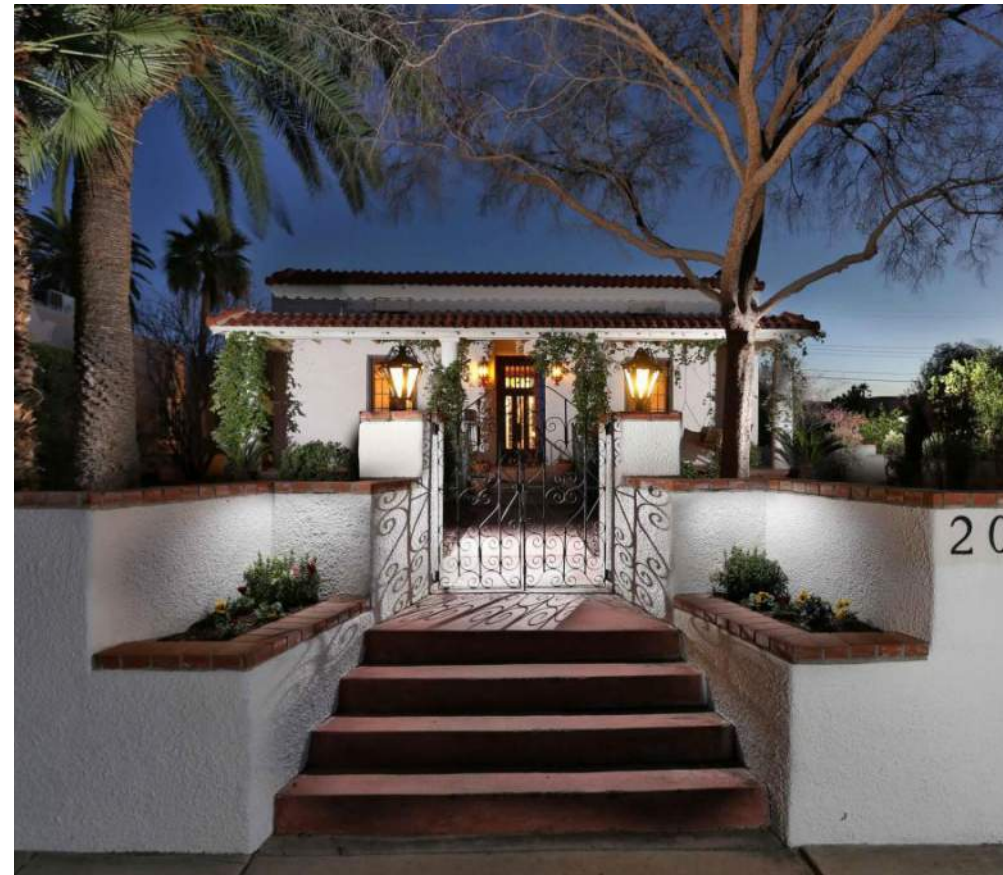
- | | | | |
|--|---|--|--|
| <ul style="list-style-type: none"> 1. Full height architectural window wall system; Aluminum with low E glass. 2. Window wall cap. Silver Finish Mullion. 3. Stucco facade, white color with textured finish. 4. Architectural Thermal Windows, with low E glass; Silver Finished Mullion. 5. Stucco facade control joints. | <ul style="list-style-type: none"> 6. Stucco frame, red elastomeric finish. 7. Metal frame structure with metal slat shading. 8. Stucco screening wall/ parapet/ noise barrier. 9. Rooftop mechanical units screened by #9. 10. Stucco frame, red elastomeric paint finish. 11. White metal panel cladding. Matte finish. 12. Light grey metal panel cladding. Matte finish. | <ul style="list-style-type: none"> 13. Dark grey metal panel cladding. Matte finish. 14. Stucco facade, dark grey color with textured finish. 15. Architectural Thermal Windows, with low E glass; Silver Finished Mullion. 16. Stucco facade control joints. 17. Stucco frame, red elastomeric paint finish. 18. Metal panel cladding. Same configuration as #12 - #14. | <ul style="list-style-type: none"> 19. Stucco facade, white color with textured finish. 20. Clear glass at pedestrian level. 21. Drive thru entry with signage above. 22. Parking garage entry with signage above. |
|--|---|--|--|



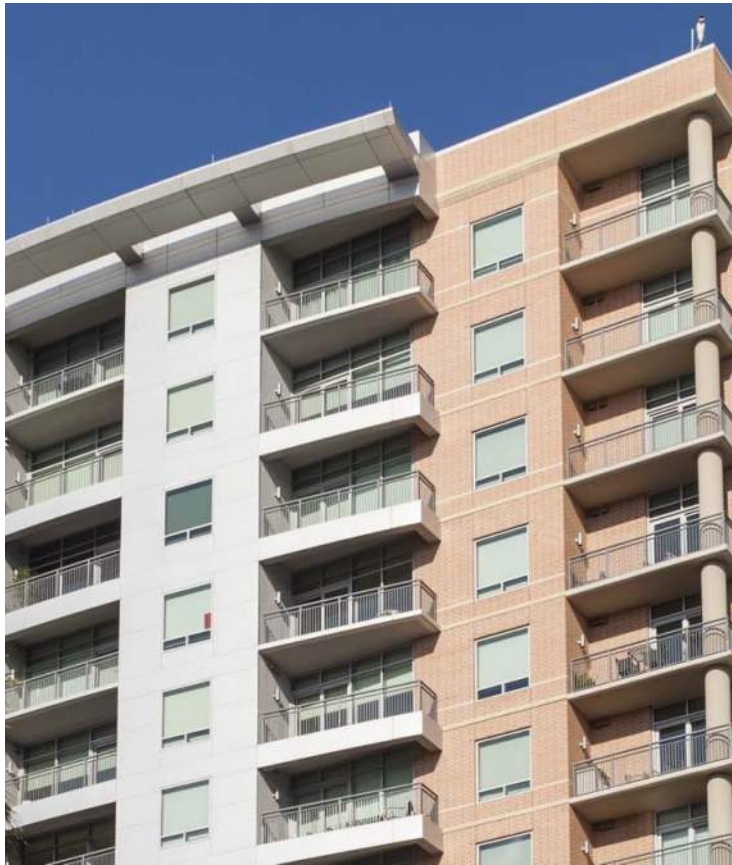
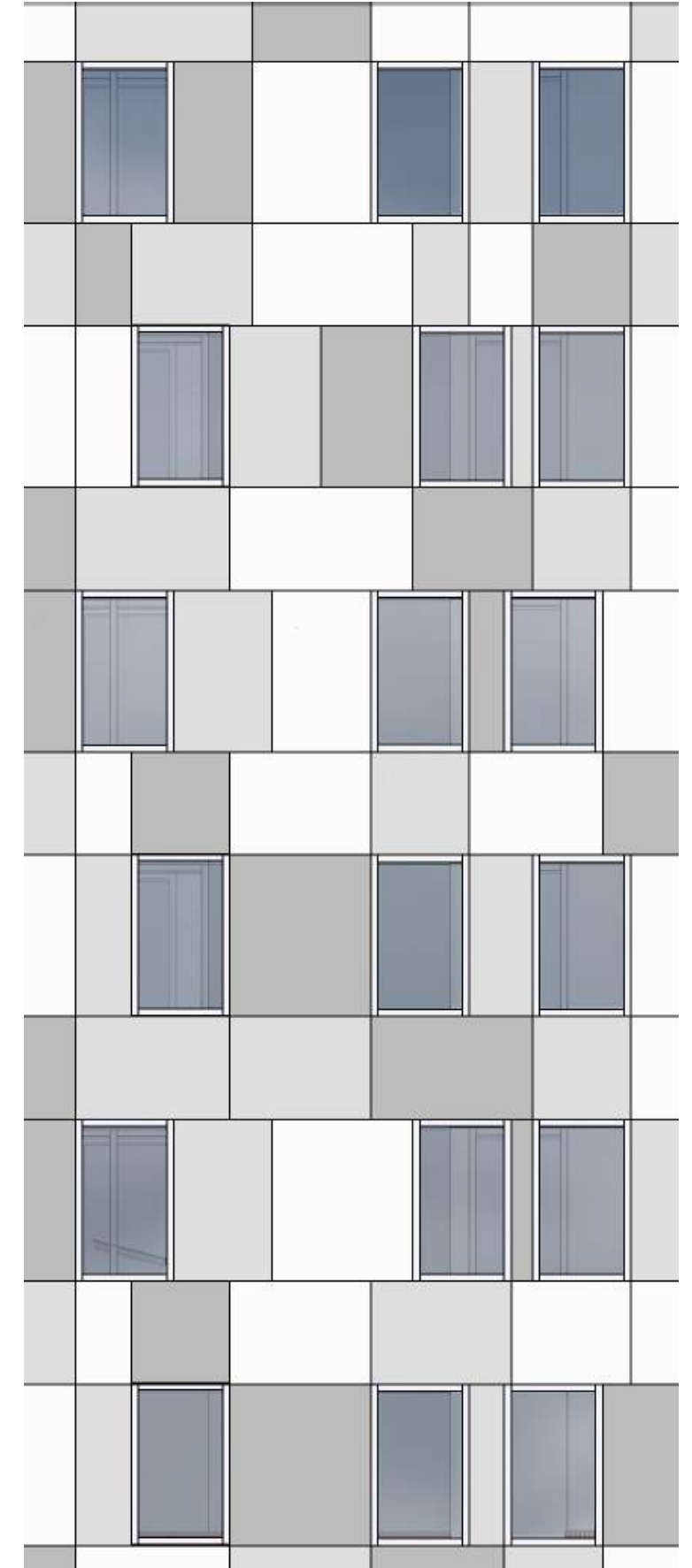
EXTERIOR MATERIAL LEGEND

- | | | | |
|--|--|---|--|
| 1. Full height architectural window wall system; Aluminum with low E glass. | 6. Stucco frame, red elastomeric finish. | 13. Dark grey metal panel cladding. Matte finish. | 19. Stucco facade, white color with textured finish. |
| 2. Window wall cap. Silver Finish Mullion. | 7. Metal frame structure with metal slat shading. | 14. Stucco facade, dark grey color with textured finish. | 20. Clear glass at pedestrian level. |
| 3. Stucco facade, white color with textured finish. | 8. Stucco screening wall/ parapet/ noise barrier. | 15. Architectural Thermal Windows, with low E glass; Silver Finished Mullion. | 21. Drive thru entry with signage above. |
| 4. Architectural Thermal Windows, with low E glass; Silver Finished Mullion. | 9. Rooftop mechanical units screened by #9. | 16. Stucco facade control joints. | 22. Parking garage entry with signage above. |
| 5. Stucco facade control joints. | 10. Stucco frame, red elastomeric paint finish. | 17. Stucco frame, red elastomeric paint finish. | |
| | 11. White metal panel cladding. Matte finish. | 18. Metal panel cladding. Same configuration as #12 - #14. | |
| | 12. Light grey metal panel cladding. Matte finish. | | |







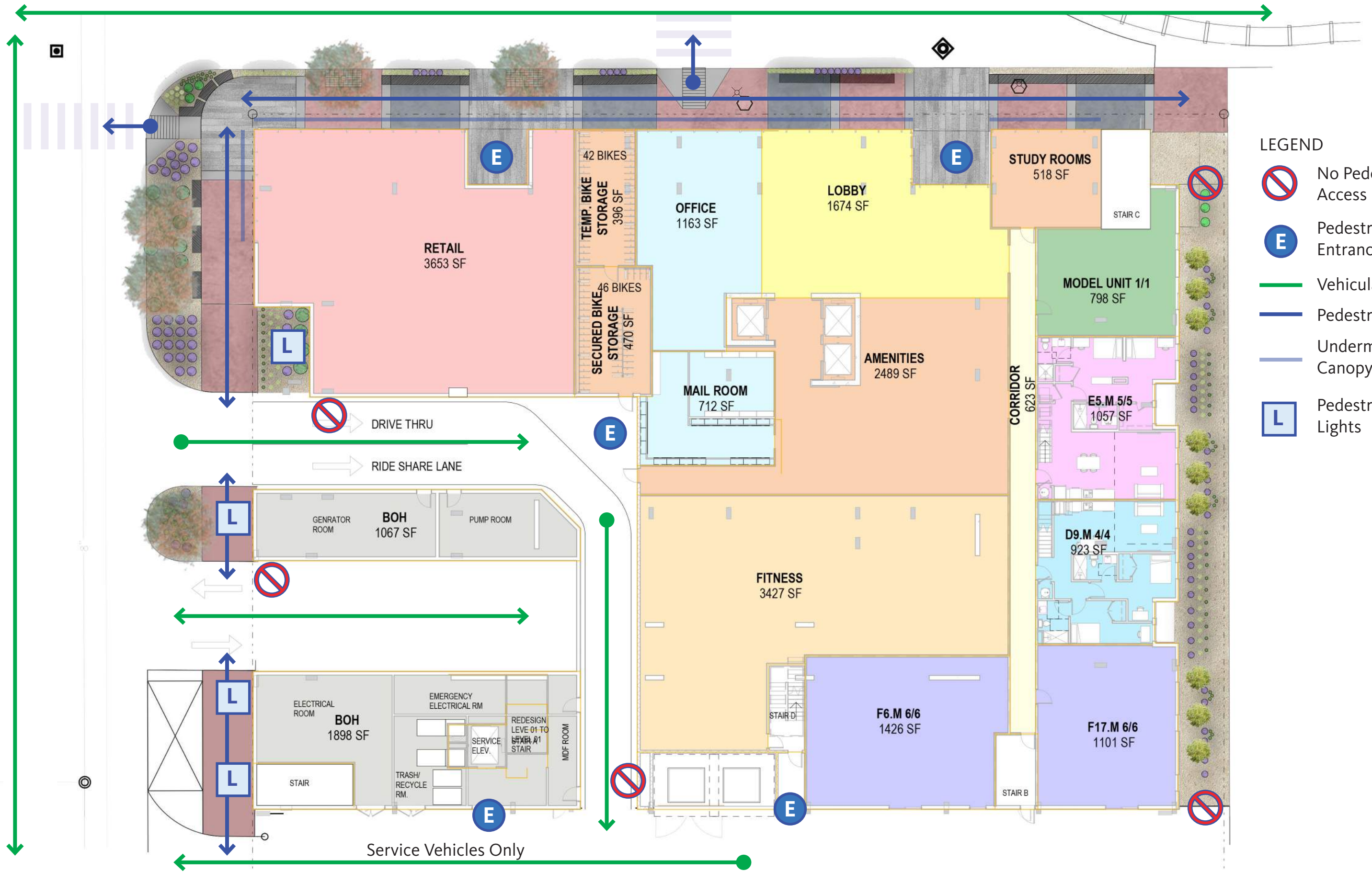


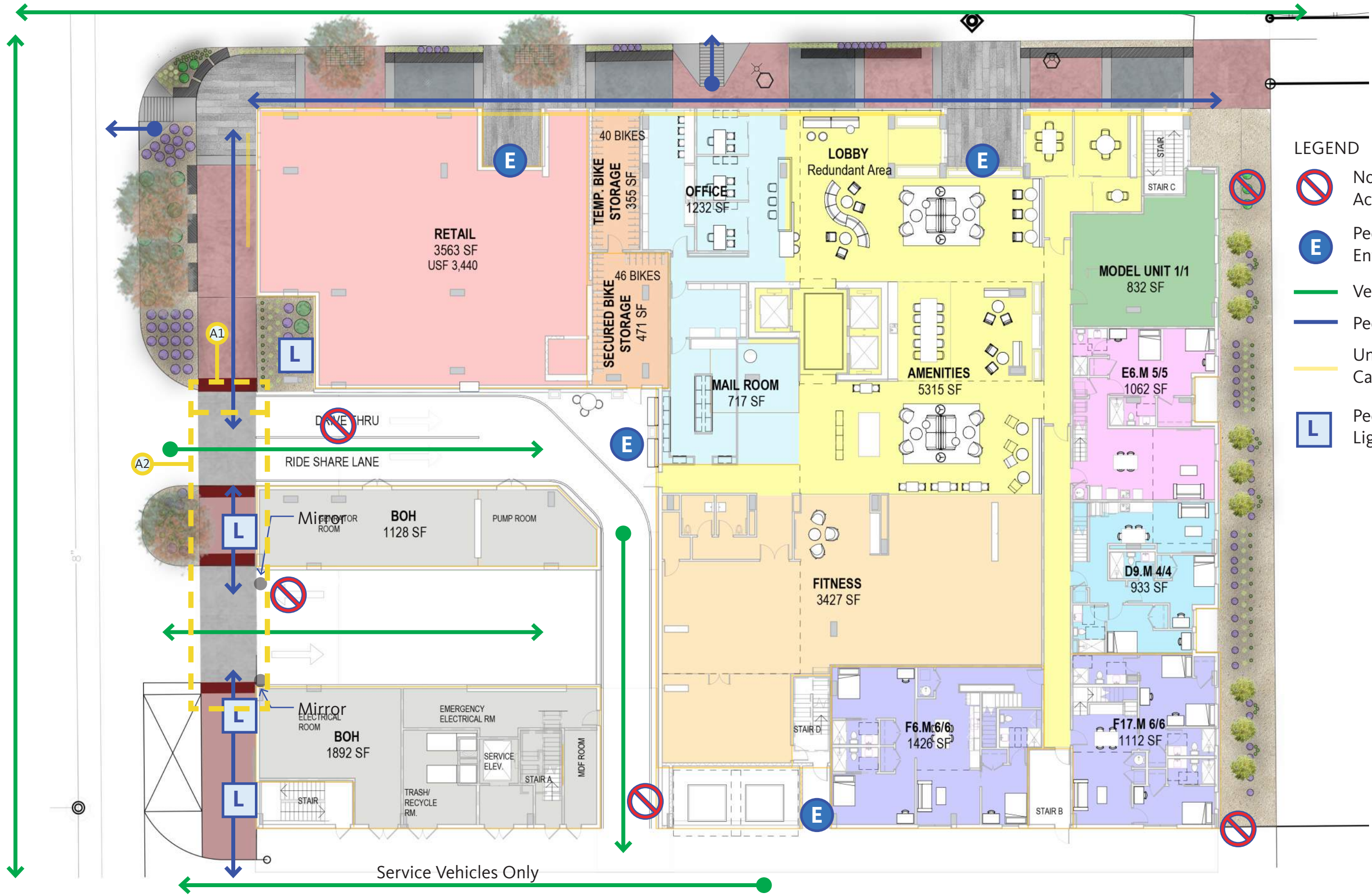
Aspire Tucson 2

Metal Panel Pattern Examples

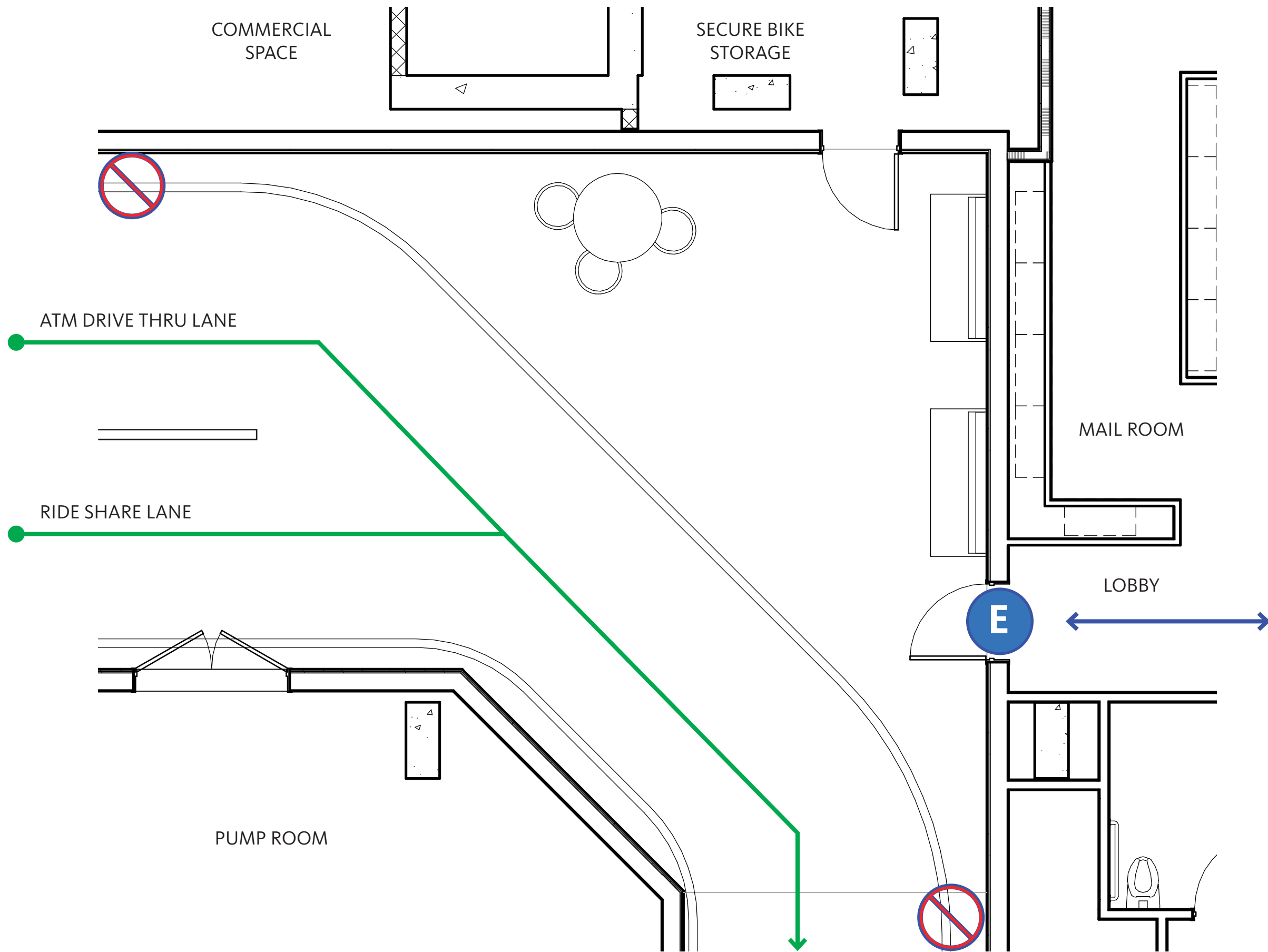
Tucson, Arizona | 25, Apr.

©2019 **Gensler**





- LEGEND**
- No Pedestrian Access
 - Pedestrian Entrance
 - Vehicular Path
 - Pedestrian Path
 - Undermount Canopy Lights
 - Pedestrian Lights



PARK AVE.



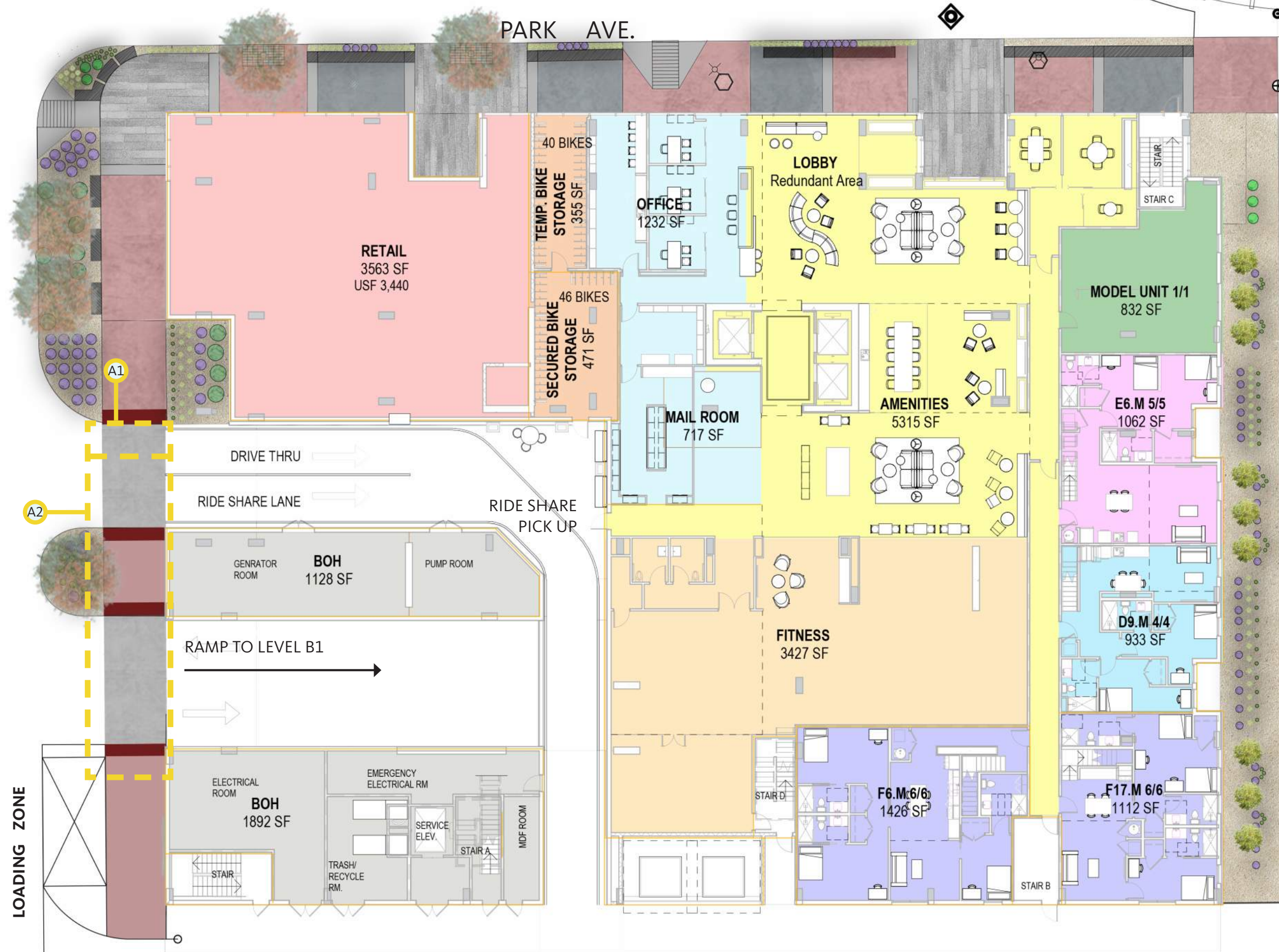
FIRST ST.

LOADING ZONE



- RETAIL
- AMENITIES
- LOBBY
- FITNESS
- OFFICE
- BOH
- 1/1
- 4/4
- 5/5
- RESIDENTIAL
- 6/6





- RETAIL
- AMENITIES
- LOBBY
- FITNESS
- OFFICE
- BOH
- 1/1
- 4/4
- 5/5
- 6/6

FIRST ST.

LOADING ZONE

PARK AVE.

0' 5' 10' 15' 20' 30' 40' 60' Tucson, Arizona | 25, Apr.

Thank you

