



FAR WEST ELEVATION
GLAZING AREA

SUBMITTED GLAZING AREA - 3,765 sqf





The Hub at Tucson

Core Campus Developers | Antunovich Associates Architecture · Planning

WEST PERSPECTIVE VIEW 1- 2013/03 /13 SUBMITTED VIEW

Tucson, Arizona | May 15, 2014



The Hub at Tucson

Core Campus Developers | Antunovich Associates Architecture · Planning

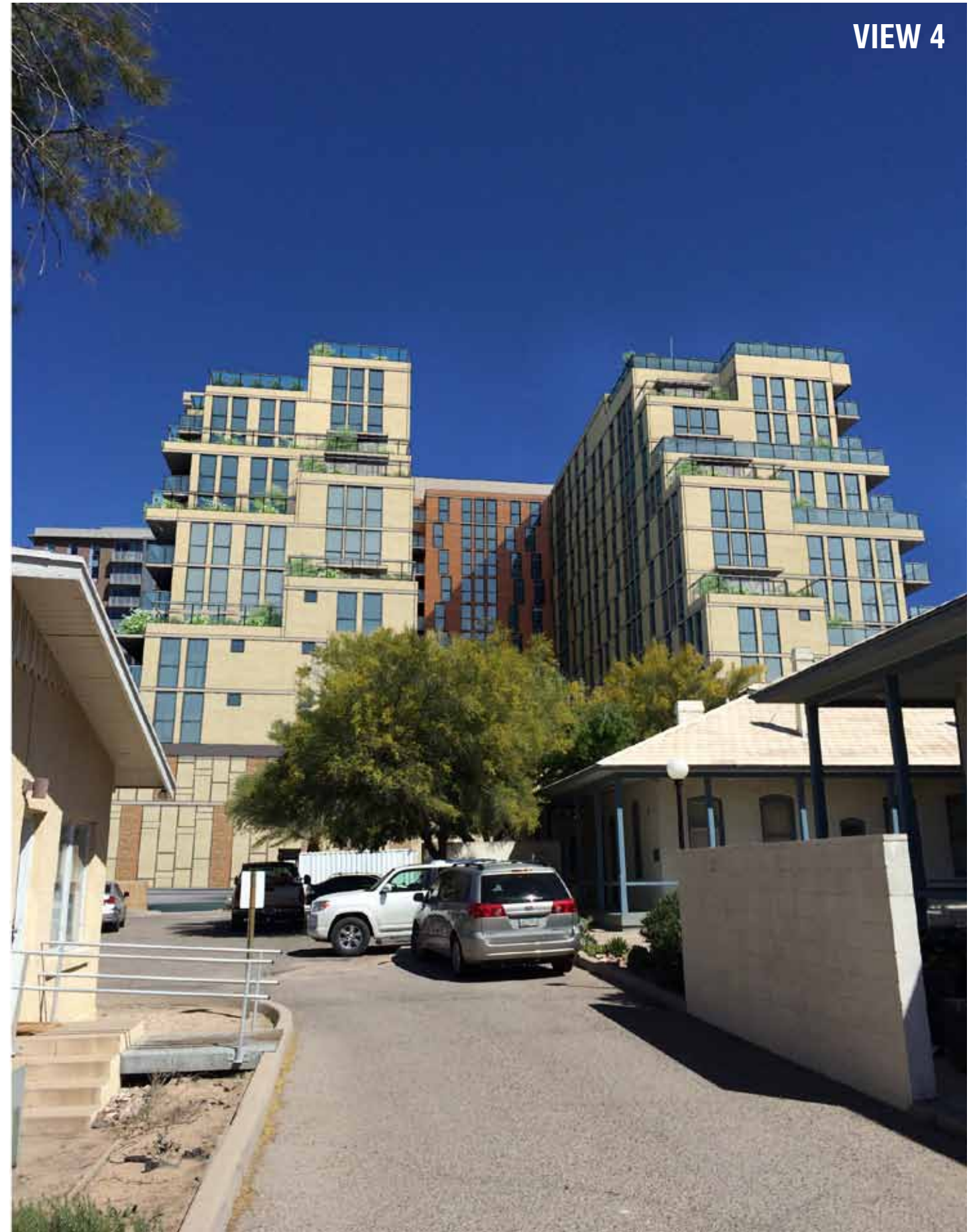
WEST PERSPECTIVE VIEW 2- 2013/03 /13 SUBMITTED VIEW

Tucson, Arizona | May 15, 2014

VIEW 3



VIEW 4



 **The Hub at Tucson**

Core Campus Developers | Antunovich Associates Architecture · Planning

WEST PERSPECTIVE VIEW 3 & 4- 2013/03 /13 **SUBMITTED VIEW**

Tucson, Arizona | May 15, 2014



The Hub at Tucson

Core Campus Developers | Antunovich Associates Architecture · Planning

VIEW FROM SPEEDWAY & EUCLID- 2013/03/13 SUBMITTED VIEW

Tucson, Arizona | May 15, 2014



The Hub at Tucson

Core Campus Developers | Antunovich Associates Architecture · Planning

WEST ELEVATION- **AS BUILT**

Tucson, Arizona | May 15, 2014



The Hub at Tucson

Core Campus Developers | Antunovich Associates Architecture · Planning

WEST PERSPECTIVE VIEW 1- **AS BUILT**

Tucson, Arizona | May 15, 2014



The Hub at Tucson

Core Campus Developers | Antunovich Associates Architecture · Planning

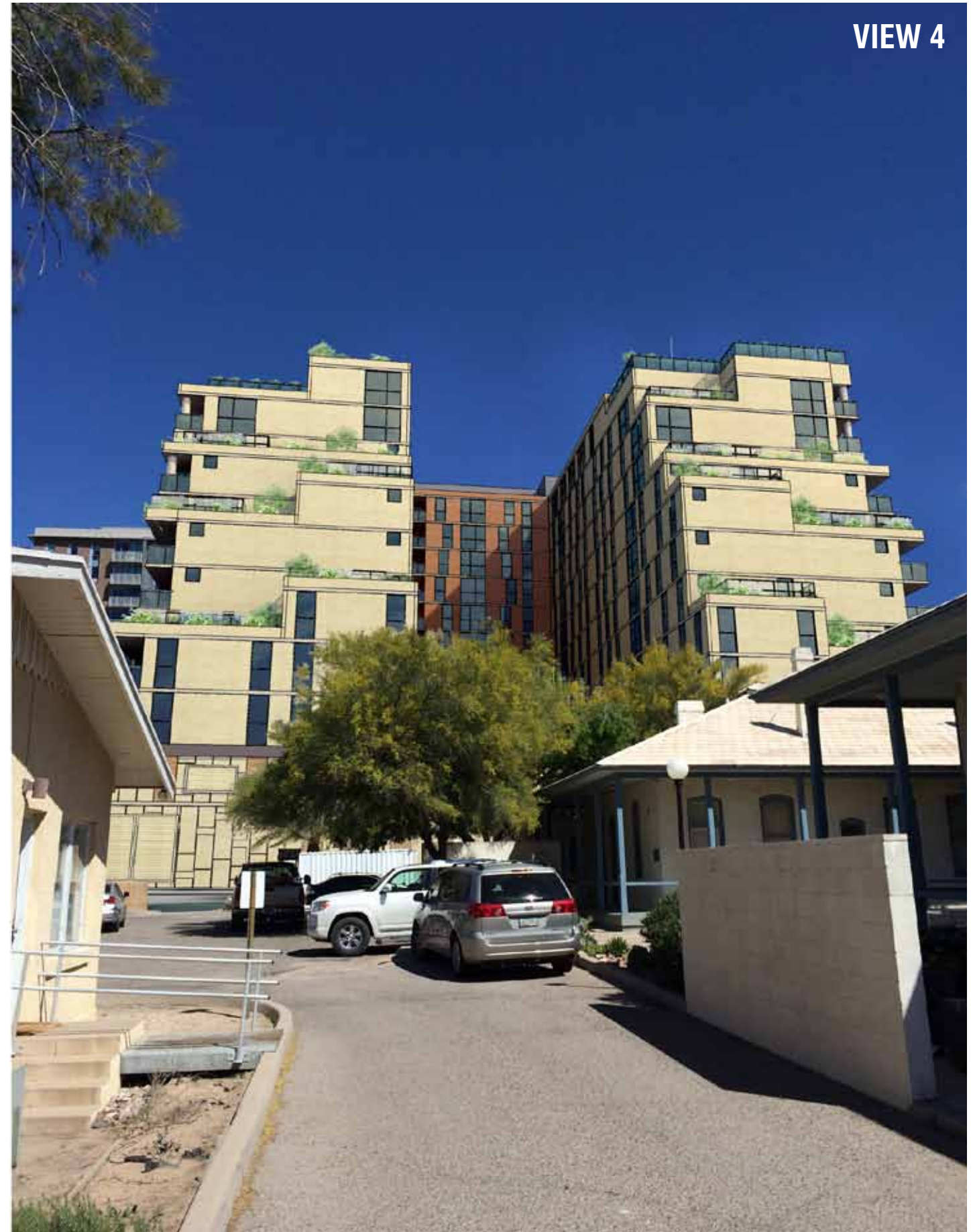
WEST PERSPECTIVE VIEW 2- **AS BUILT**

Tucson, Arizona | May 15, 2014

VIEW 3



VIEW 4





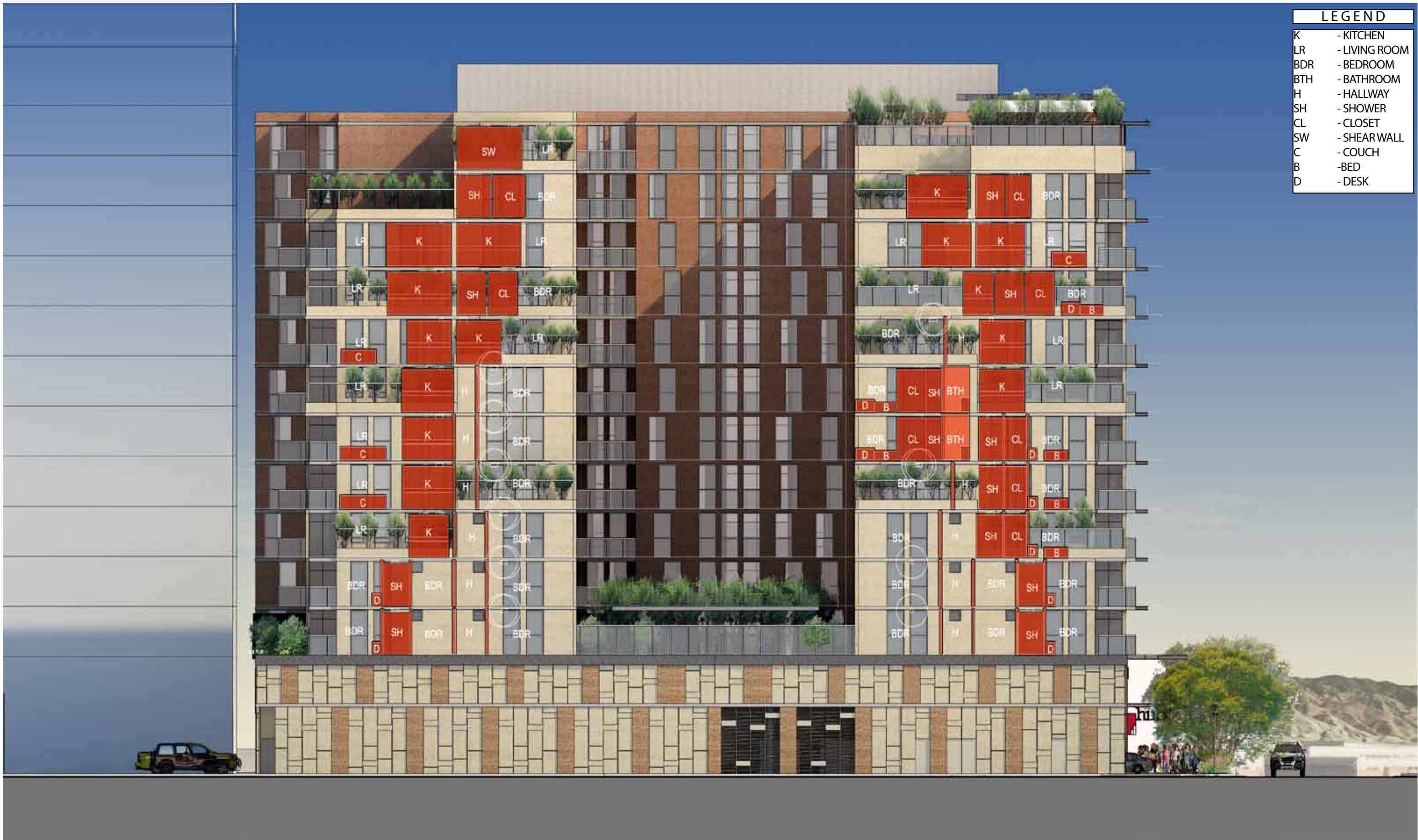
The Hub at Tucson

Core Campus Developers | Antunovich Associates Architecture · Planning

VIEW FROM SPEEDWAY & EUCLID- **AS BUILT**

Tucson, Arizona | May 15, 2014





LEGEND	
K	- KITCHEN
LR	- LIVING ROOM
BDR	- BEDROOM
BTH	- BATHROOM
H	- HALLWAY
SH	- SHOWER
CL	- CLOSET
SW	- SHEARWALL
C	- COUCH
B	- BED
D	- DESK



The Hub at Tucson

Core Campus Developers | Antunovich Associates Architecture · Planning

APRIL 7TH DRC SUBMISSION - **OPTION - 1**

Tucson, Arizona | May 15, 2014



The Hub at Tucson

Core Campus Developers | Antunovich Associates Architecture · Planning

APRIL 7TH DRC SUBMISSION - **OPTION - 2**

Tucson, Arizona | May 15, 2014

FAR WEST ELEVATION
GLAZING AREA

AS BUILT GLAZING AREA	- 2,095sqf
ADDED GLAZING	- 1,670 sqf
TOTAL	- 3,765 sqf



FAR WEST ELEVATION
GLAZING AREA

AS BUILT GLAZING AREA	- 2,095sqf
ADDED GLAZING	- 1,765 sqf
TOTAL	- 3,860 sqf



LIST OF COMMENTS

- Materials for western façade
- Other design changes to building between DRC approval and construction permit
- Pattern of glaze on western façade
- The look of vision glass and spandrel glass?
- What would the western façade look like without the greenery?
- Will adding spandrel glass assist with the modified look of the glass doors?
- Concerns with alleyway façade (bottom 2 floors)?



DALLAS
TEL 214 613 5020
FAX 214 613 5021
5207 MCKINNEY AVE SUITE 22
DALLAS TX 75205

SCOTTSDALE
TEL 480 222 9103
FAX 480 222 9104
6750 E CAMELBACK RD SUITE 103
SCOTTSDALE AZ 85251

Core Campus
Mr. Marc Lifshin
2234 West North Ave.
Chicago IL, 60647
Phone: (520) 837-7029

May 2, 2014

Re: Additional West Elevation Windows Hub Tucson

Dear Marc:

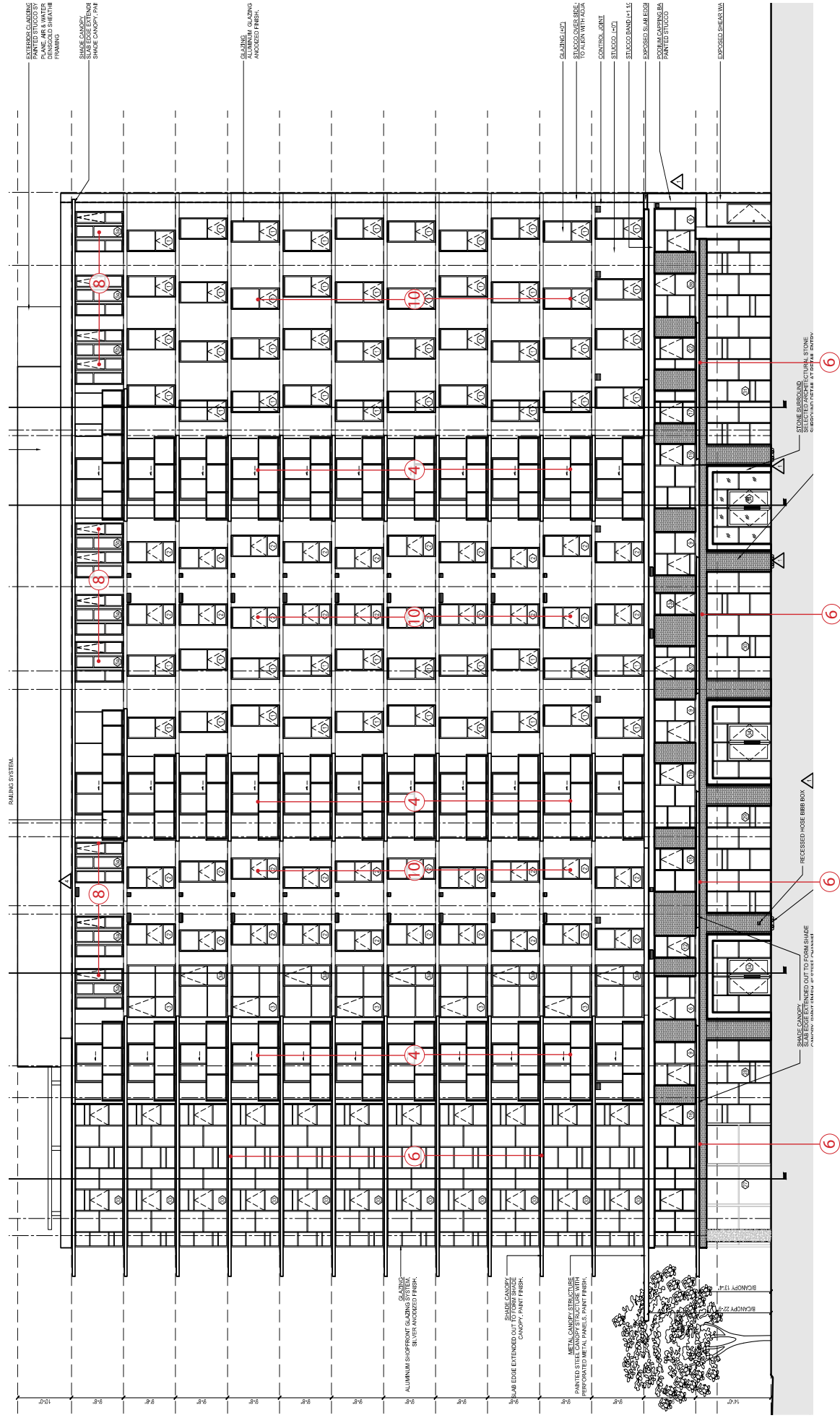
I wanted to send you a letter confirming our position on the addition of West Facing Windows for the above referenced project. It seems, even after numerous conversations, our point is not getting across, the walls as completed are a complete water tight assembly, once you cut into that assembly you have completely voided not only the warranty but the water tight integrity of the assembly, you are quite frankly asking for a future problem, whether it be in 6 months or 3 years problems will arise. We strongly recommend you do not cut into the elevation, in fact we are not willing to do so, and as discussed you can accomplish the required "look" through other options.

I hope this finally puts this issue to bed and if you need please contact me directly to discuss.

Sincerely,

A handwritten signature in black ink, appearing to read "M Hurst", written over a horizontal line.

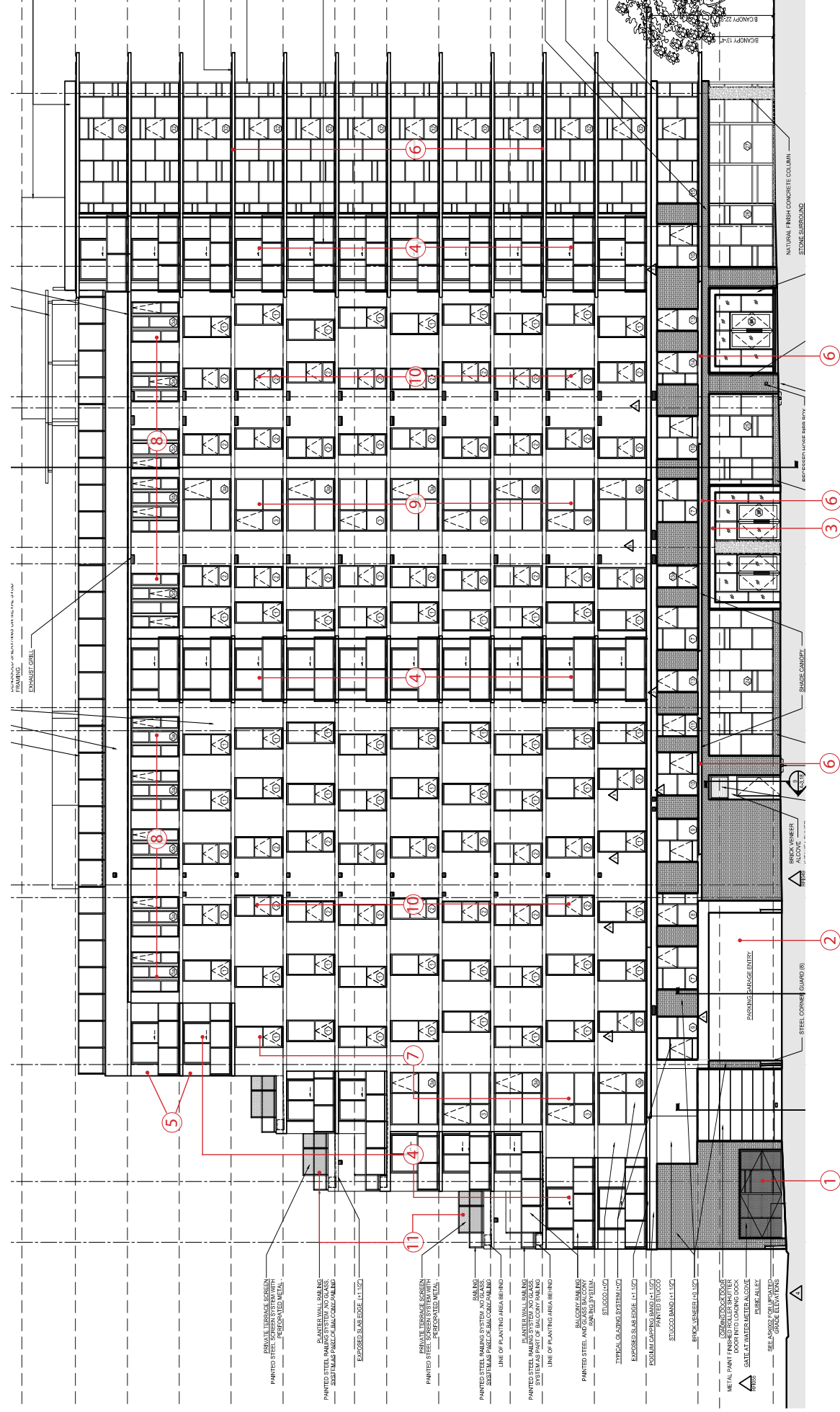
Michael Hurst
Principal



Revisions to Exterior Elevations Legend

- Denotes revisions on given facade.
- 1. Grillage at face of building with mechanical equipment behind.
- 2. One large garage opening instead of two smaller openings.
- 3. First floor residential entry framed in stone instead of brick.
- 4. 2 panel full height glass sliding doors in lieu of 3 panel system
- 5. Addition of structural columns at west end of building
- 6. Finished concrete edge detail in lieu of steel
- 7. Revised pattern, less glazing at west end of building
- 8. Revised glazing pattern at 12th floor
- 9. Addition of larger glazing opening
- 10. Revised glazing / opening pattern
- 11. 72" custom perforated aluminum privacy screens around terraces in lieu of code required railing at roof edges
- 12. Addition of stair exit enclosure
- 13. Addition of mechanical grills which match surrounding background.
- 14. Exposed architectural concrete finish in Lieu of painted finish.





Revisions to Exterior Elevations Legend

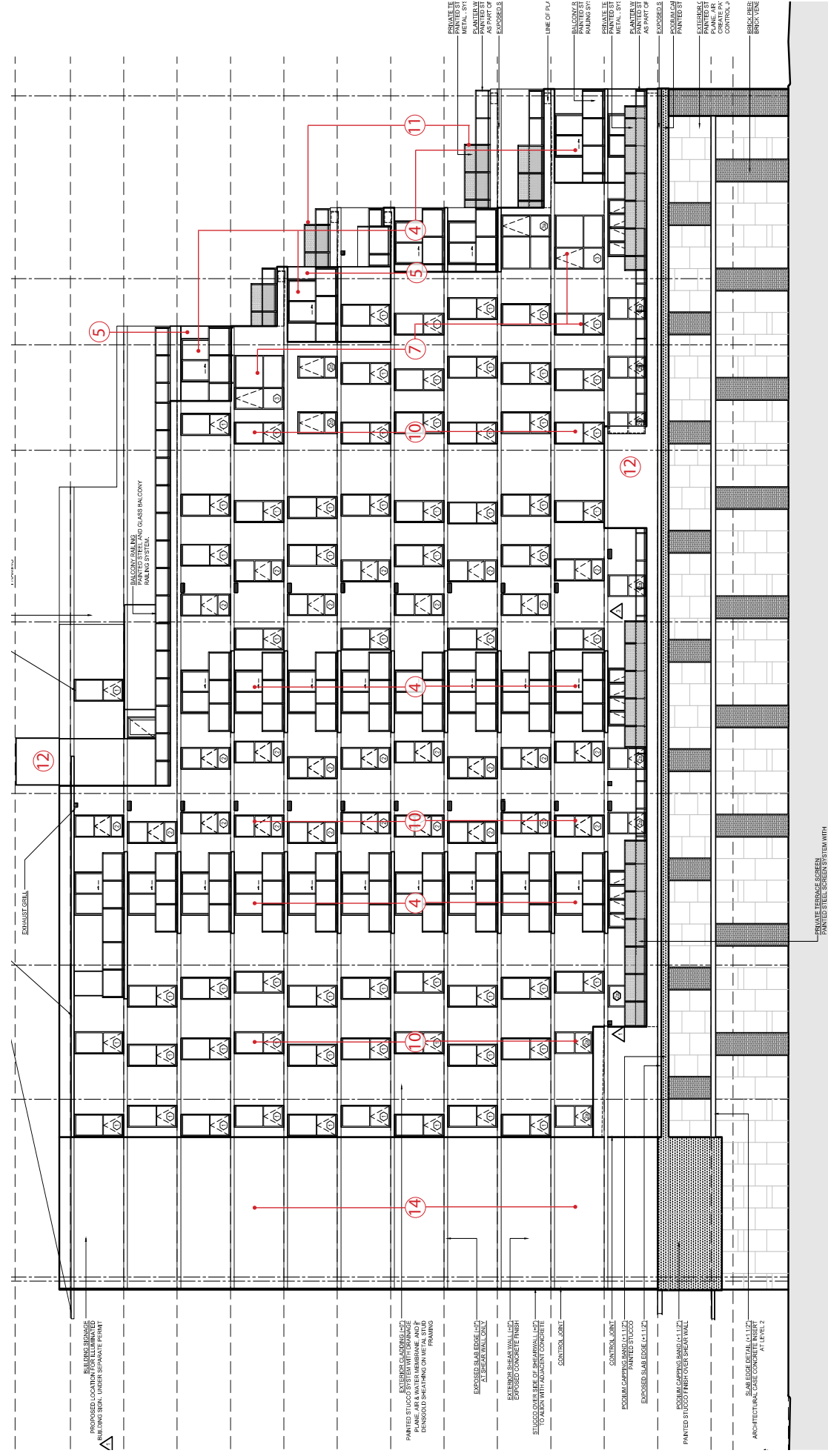
Denotes revisions on Given facade.

1. Grillage at face of building with mechanical equipment behind.
2. One large garage opening instead of two smaller openings.
3. First floor residential entry framed in stone instead of brick.
4. 2 panel full height glass sliding doors in lieu of 3 panel system
5. Addition of structural columns at west end of building

6. Finished concrete edge detail in lieu of steel
7. Revised pattern, less glazing at west end of building
8. Revised glazing pattern at 12th floor
9. Addition of larger glazing opening
10. Revised glazing / opening pattern
11. 72" custom perforated aluminum privacy screens around terraces in lieu of code required railing at roof edges

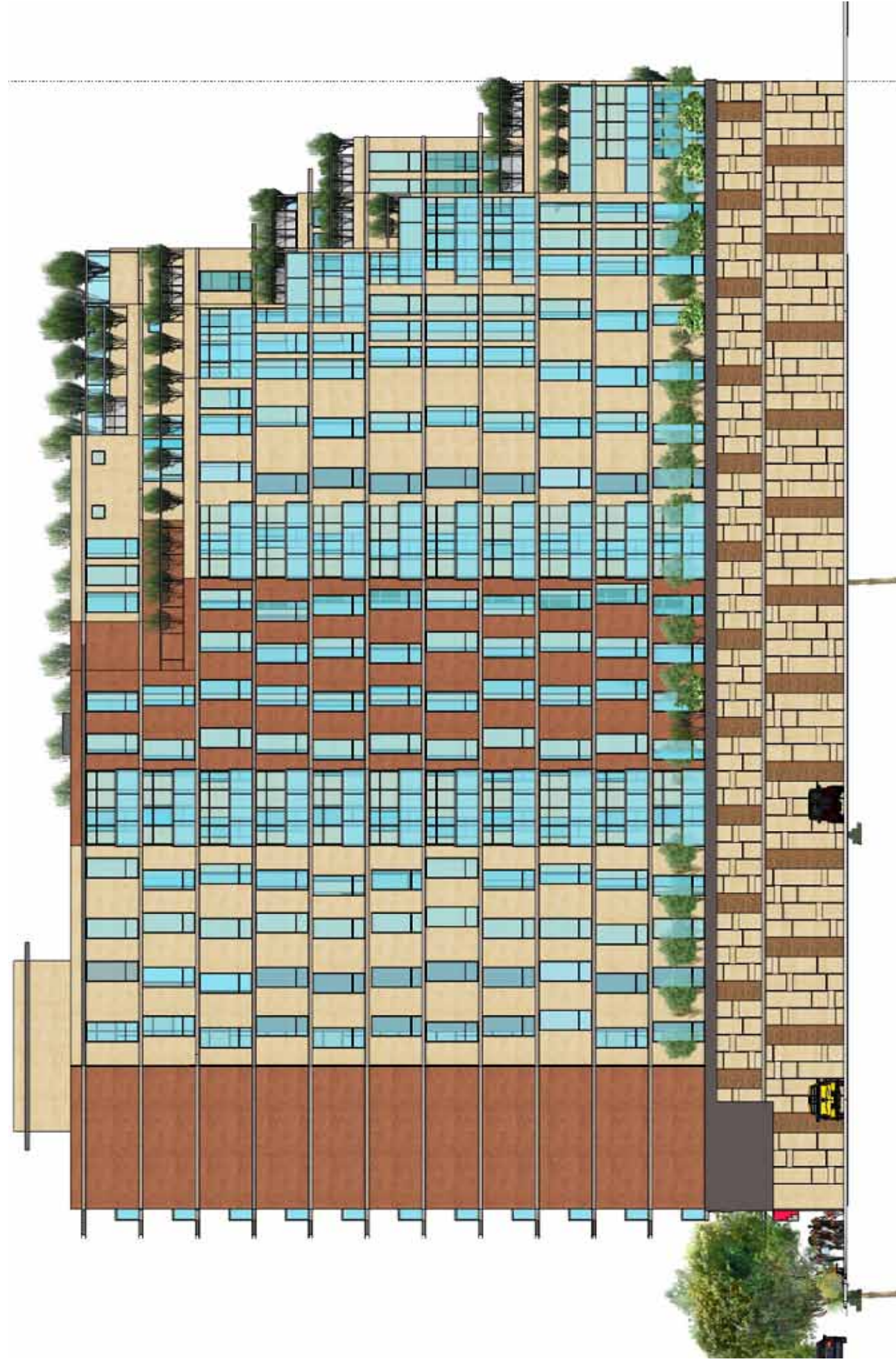
12. Addition of stair exit enclosure
13. Addition of mechanical grills which match surrounding background.
14. Exposed architectural concrete finish in Lieu of painted finish.

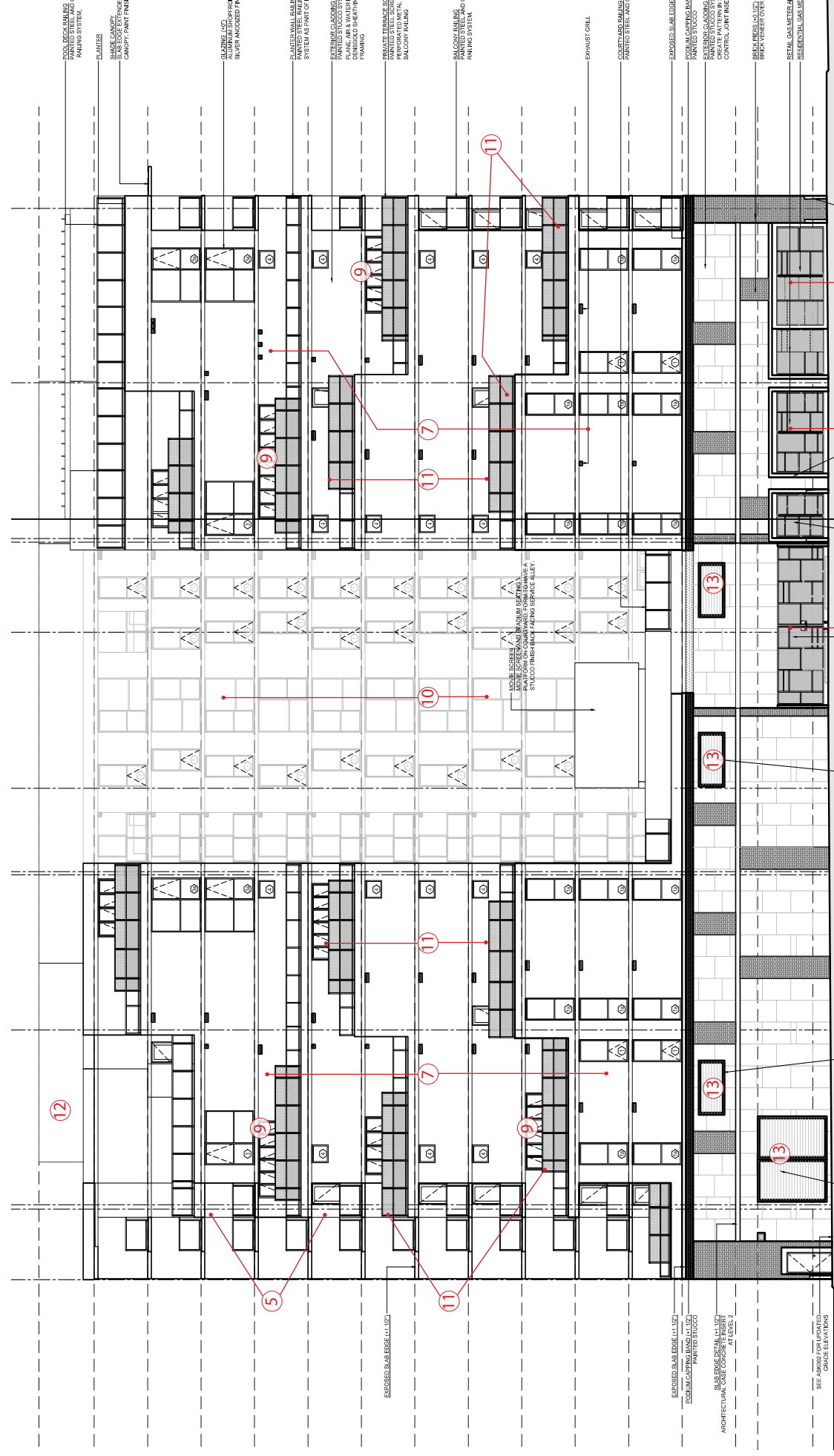




Revisions to Exterior Elevations Legend

- Denotes revisions on Given facade.
- 1. Grillage at face of building with mechanical equipment behind.
- 2. One large garage opening instead of two smaller openings.
- 3. First floor residential entry framed in stone instead of brick.
- 4. 2 panel full height glass sliding doors in lieu of 3 panel system
- 5. Addition of structural columns at west end of building
- 6. Finished concrete edge detail in lieu of steel
- 7. Revised pattern, less glazing at west end of building
- 8. Revised glazing pattern at 12th floor
- 9. Addition of larger glazing opening
- 10. Revised glazing / opening pattern
- 11. 72" custom perforated aluminum privacy screens around terraces in lieu of code required railing at roof edges
- 12. Addition of stair exit enclosure
- 13. Addition of mechanical grills which match surrounding background.
- 14. Exposed architectural concrete finish in Lieu of painted finish.





Revisions to Exterior Elevations Legend

- Denotes revisions on Given facade.
- 1 Grillage at face of building with mechanical equipment behind.
- 2 One large garage opening instead of two smaller openings.
- 3 First floor residential entry framed in stone instead of brick.
- 4 2 panel full height glass sliding doors in lieu of 3 panel system
- 5 Addition of structural columns at west end of building
- 6 Finished concrete edge detail in lieu of steel
- 7 Revised pattern, less glazing at west end of building
- 8 Revised glazing pattern at 12th floor
- 9 Addition of larger glazing opening
- 10 Revised glazing / opening pattern
- 11 72" custom perforated aluminum privacy screens around terraces in lieu of code required railing at roof edges
- 12 Addition of stair exit enclosure
- 13 Addition of mechanical grills which match surrounding background.
- 14 Exposed architectural concrete finish in Lieu of painted finish.



FAR WEST ELEVATION
GLAZING AREA

AS BUILT GLAZING AREA - 2,095 sqf
ADDED GLAZING - 1,670 sqf

TOTAL -3,765 sqf

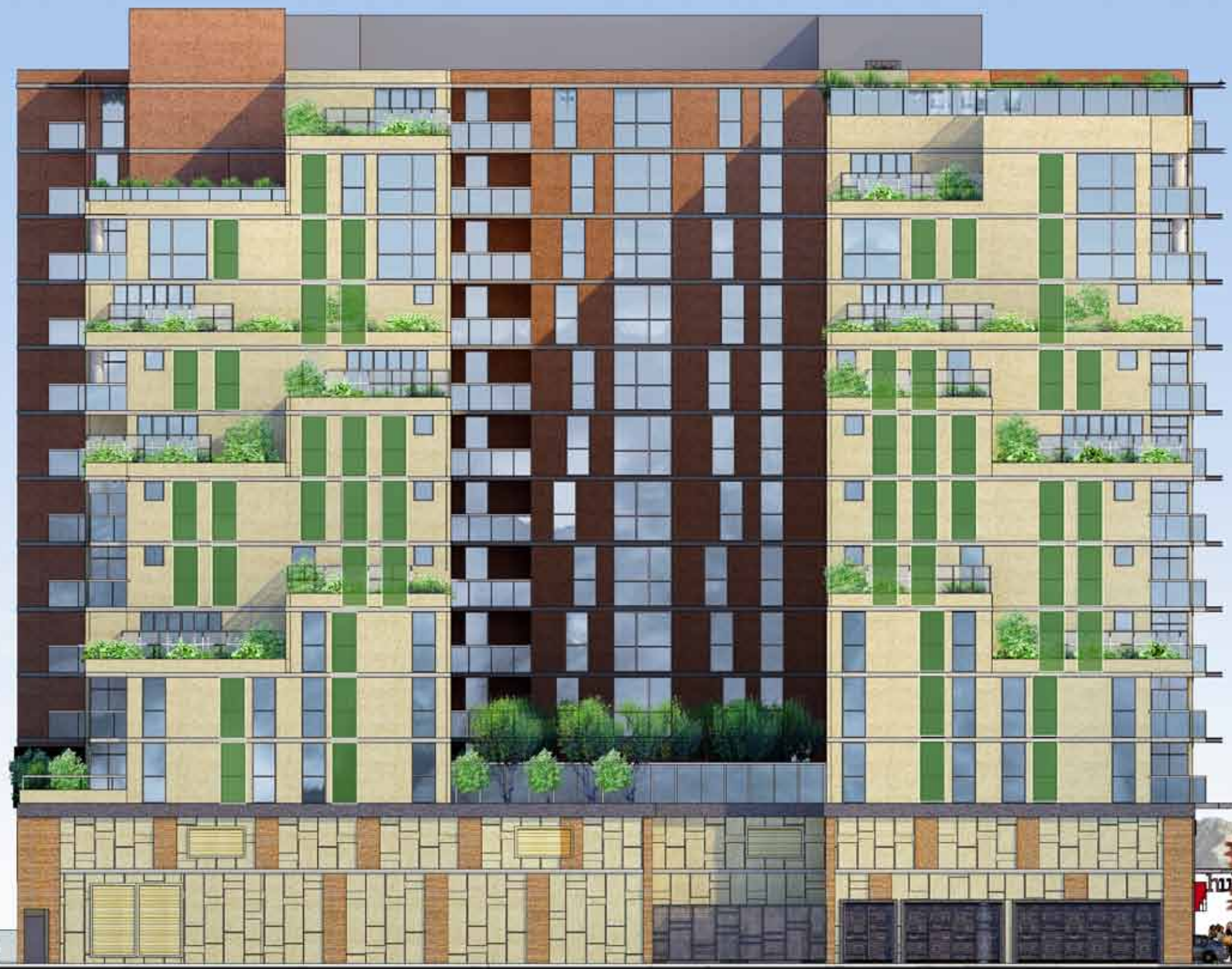


FAR WEST ELEVATION
GLAZING AREA

AS BUILT GLAZING AREA - 2,095 sqf
ADDED GLAZING - 1,670 sqf

TOTAL - 3,765 sqf

53 NEW GLAZED PANELS - 1,670 sqf





The Hub at Tucson

Core Campus Developers | Antunovich Associates Architecture · Planning

WEST PERSPECTIVE VIEW 1- **OPTION - 2a**

Tucson, Arizona | May 15, 2014



The Hub at Tucson

Core Campus Developers | Antunovich Associates Architecture · Planning

WEST PERSPECTIVE VIEW 2- **OPTION - 2a**

Tucson, Arizona | May 15, 2014



The Hub at Tucson

Core Campus Developers | Antunovich Associates Architecture · Planning

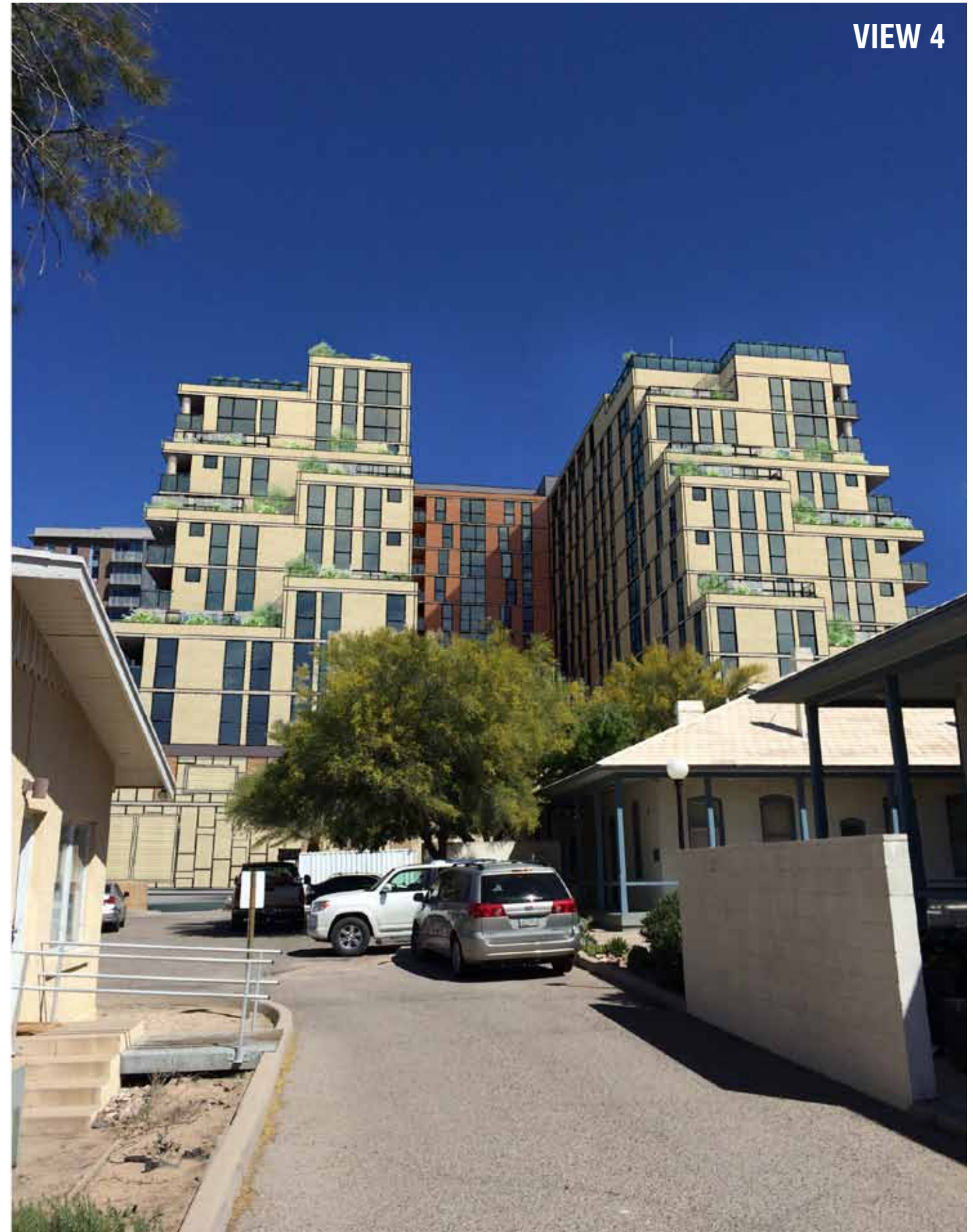
NIGHT TIME - WEST PERSPECTIVE VIEW 2- **OPTION - 2a**

Tucson, Arizona | May 15, 2014

VIEW 3



VIEW 4





The Hub at Tucson

Core Campus Developers | Antunovich Associates Architecture · Planning

VIEW FROM SPEEDWAY & EUCLID- **OPTION - 2a**

Tucson, Arizona | May 15, 2014

FAR WEST ELEVATION
GLAZING AREA

AS BUILT GLAZING AREA - 2,095 sqf
ADDED GLAZING - 1,727 sqf

TOTAL -3,822 sqf



FAR WEST ELEVATION
GLAZING AREA

AS BUILT GLAZING AREA - 2,095 sqf
ADDED GLAZING - 1,727 sqf

TOTAL -3,822 sqf

58 NEW GLAZED PANELS - 1,727 sqf





The Hub at Tucson

Core Campus Developers | Antunovich Associates Architecture · Planning

WEST PERSPECTIVE VIEW 1- **OPTION - 2b**



The Hub at Tucson

Core Campus Developers | Antunovich Associates Architecture · Planning

WEST PERSPECTIVE VIEW 2- **OPTION - 2b**

Tucson, Arizona | May 15, 2014



The Hub at Tucson

Core Campus Developers | Antunovich Associates Architecture · Planning

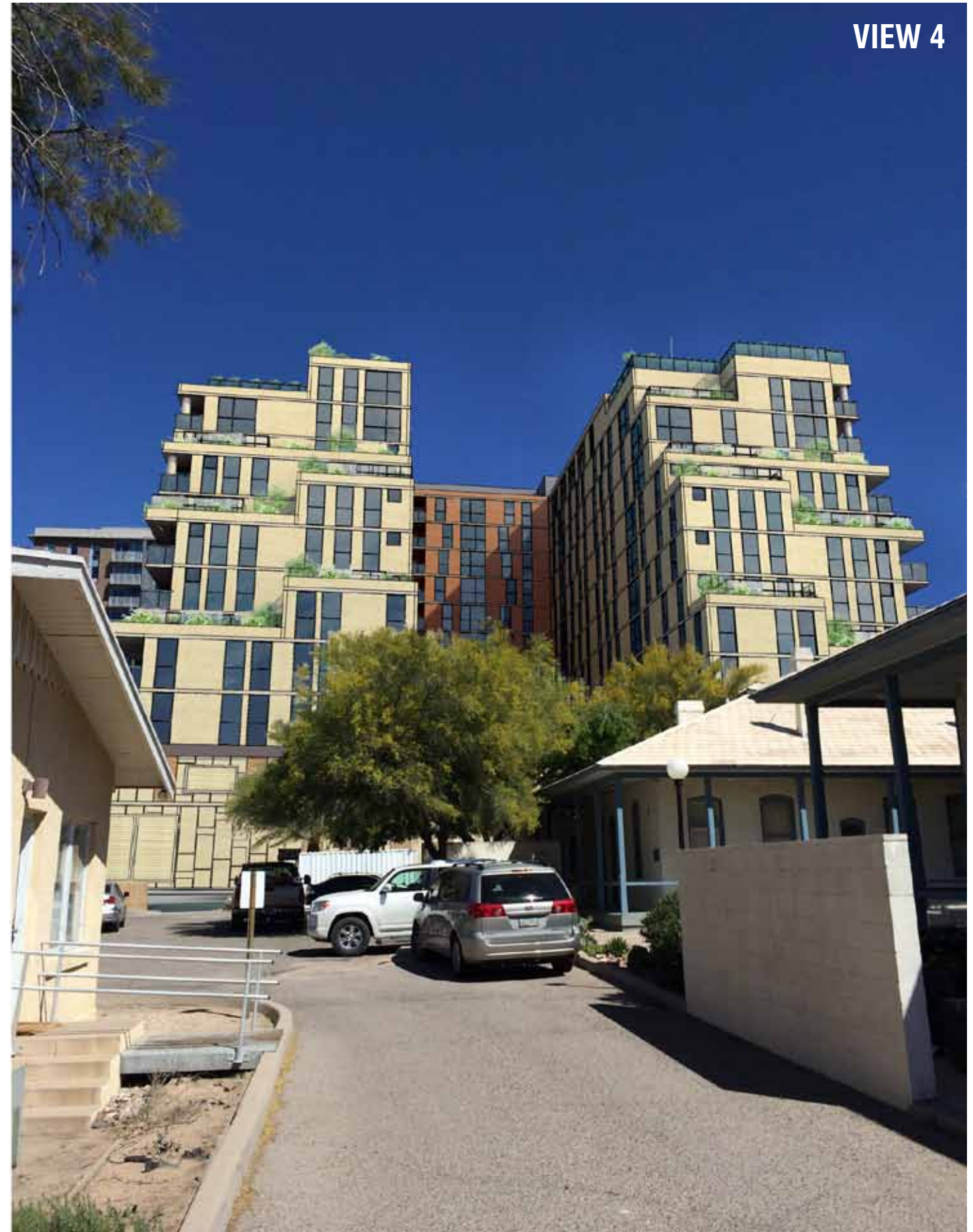
NIGHT TIME - WEST PERSPECTIVE VIEW 2- **OPTION - 2b**

Tucson, Arizona | May 15, 2014

VIEW 3



VIEW 4





The Hub at Tucson

Core Campus Developers | Antunovich Associates Architecture · Planning

VIEW FROM SPEEDWAY & EUCLID- **OPTION - 2b**

Tucson, Arizona | May 15, 2014

FAR WEST ELEVATION
GLAZING AREA

AS BUILT GLAZING AREA	- 2,095 sqf
ADDED GLAZING	- 1,502 sqf
TOTAL	- 3,597 sqf



FAR WEST ELEVATION
GLAZING AREA

AS BUILT GLAZING AREA - 2,095 sqf
ADDED GLAZING - 1,502 sqf

TOTAL - 3,597 sqf

58 NEW GLAZED PANELS - 1,502 sqf





The Hub at Tucson

Core Campus Developers | Antunovich Associates Architecture · Planning

WEST PERSPECTIVE VIEW 1- **OPTION - 2c**

Tucson, Arizona | May 15, 2014



The Hub at Tucson

Core Campus Developers | Antunovich Associates Architecture · Planning

WEST PERSPECTIVE VIEW 2- **OPTION - 2c**

Tucson, Arizona | May 15, 2014



The Hub at Tucson

Core Campus Developers | Antunovich Associates Architecture · Planning

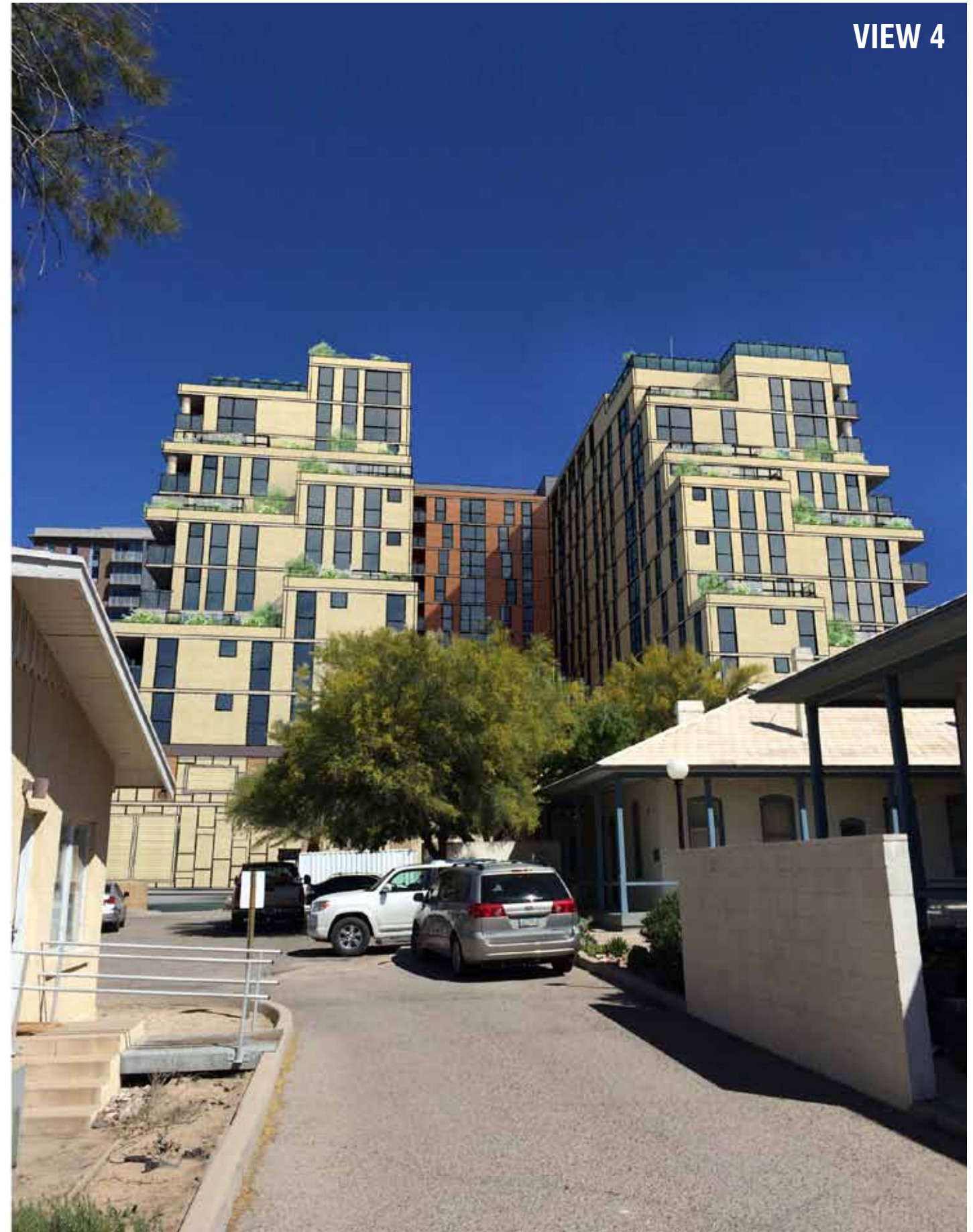
NIGHT TIME - WEST PERSPECTIVE VIEW 2- **OPTION - 2c**

Tucson, Arizona | May 15, 2014

VIEW 3



VIEW 4



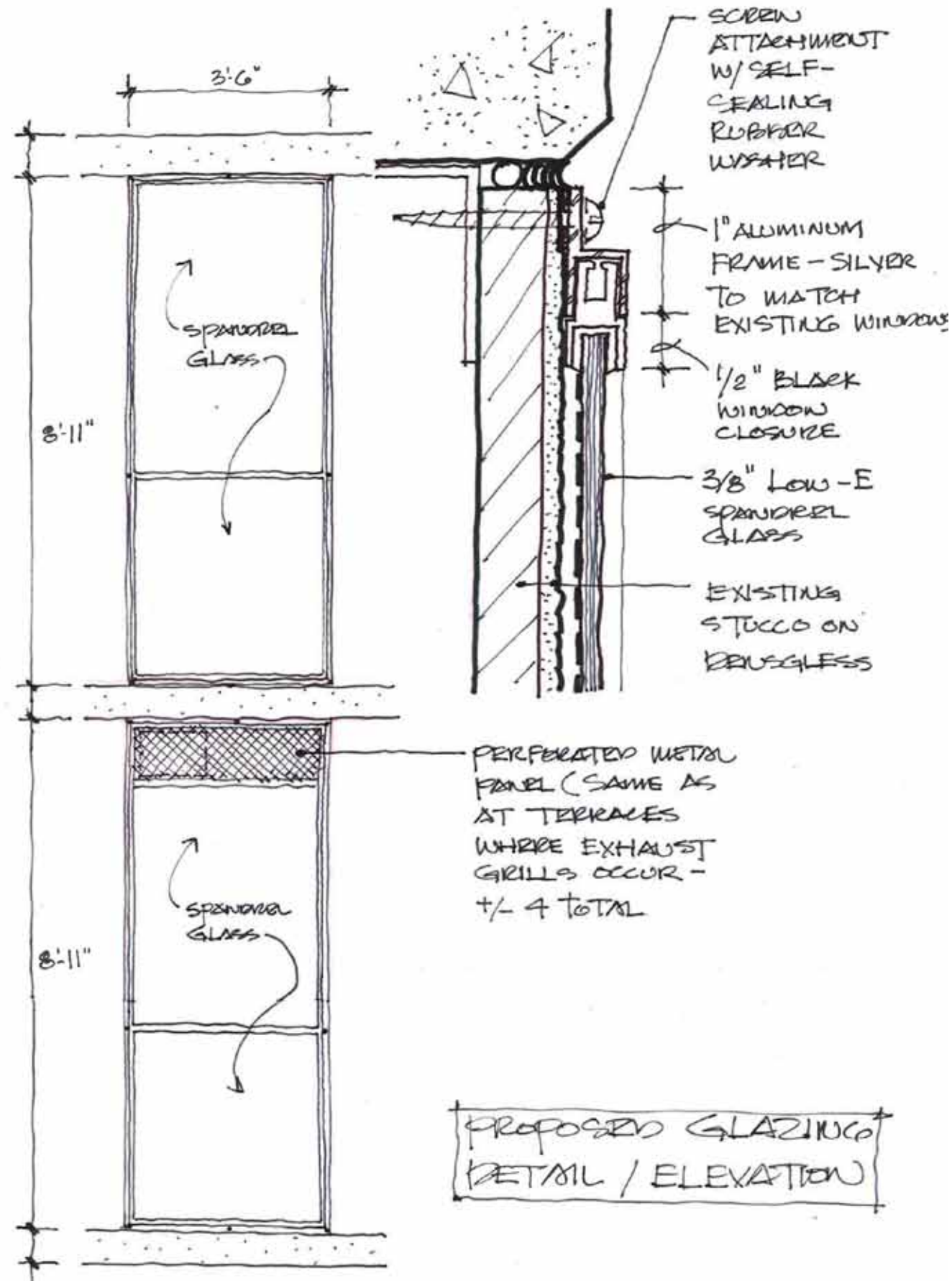


The Hub at Tucson

Core Campus Developers | Antunovich Associates Architecture · Planning

VIEW FROM SPEEDWAY & EUCLID- **OPTION - 2c**

Tucson, Arizona | May 15, 2014



SPANDREL PANEL WITH PERFORATED METAL PANEL AT EXHAUST GRILL

VISION GLAZING ABOVE SPANDREL PANEL



TYPICAL SPANDREL PANEL

SPANDREL PANEL BELOW VISION GLASS



The Hub at Tucson

Core Campus Developers | Antunovich Associates Architecture · Planning

EXISTING EXAMPLE- **SPANDREL GLASS WITH VISION GLASS**



The Hub at Tucson

Core Campus Developers | Antunovich Associates Architecture · Planning

WEST ELEVATION NO PLANTING- **AS BUILT**

Tucson, Arizona | May 15, 2014



The Hub at Tucson

Core Campus Developers | Antunovich Associates Architecture · Planning

WEST ELEVATION NO PLANTING- **OPTION - 2a**

Tucson, Arizona | May 15, 2014



The Hub at Tucson

Core Campus Developers | Antunovich Associates Architecture · Planning

WEST ELEVATION NO PLANTING- **OPTION - 2b**

Tucson, Arizona | May 15, 2014



The Hub at Tucson

Core Campus Developers | Antunovich Associates Architecture · Planning

WEST ELEVATION NO PLANTING- **OPTION - 2c**

Tucson, Arizona | May 15, 2014