



**TREES, SHRUBS & GROUND COVER**

**The Hub at Tucson  
First Street & Tyndall Avenue  
Tucson, Arizona**

**Third Floor Terrace Courtyard  
Typical  
Shrubs and Groundcover**

*Artichoke Agave*  
*Agave parryi truncata* 15 Gal.



*Bulbine 'Tiny Tangerine'*  
*Bulbine frutescens* (dwarf) 5 Gal.



*Damianita*  
*Chrysactinia mexicana* 5 Gal.



*Compact Myrtle*  
*Myrtus communis 'Compacta'*



*Penstemon*  
*Penstemon eatoni / baccharifolius* 1 Gal.



*Ruellia brittoniana 'Purple Showers'*  
*Mexican Petunia*



*Autumn Sage*  
*Salvia greggii*



*Lady's Slipper*  
*Pedilanthus macrocarpus*



*Yellow Bells*  
*Tecoma stans 'var. Angustata'*







**The Hub at Tucson**  
**First Street & Tyndall Avenue**  
**Tucson, Arizona**

**Third Floor**

**Terrace Courtyard**

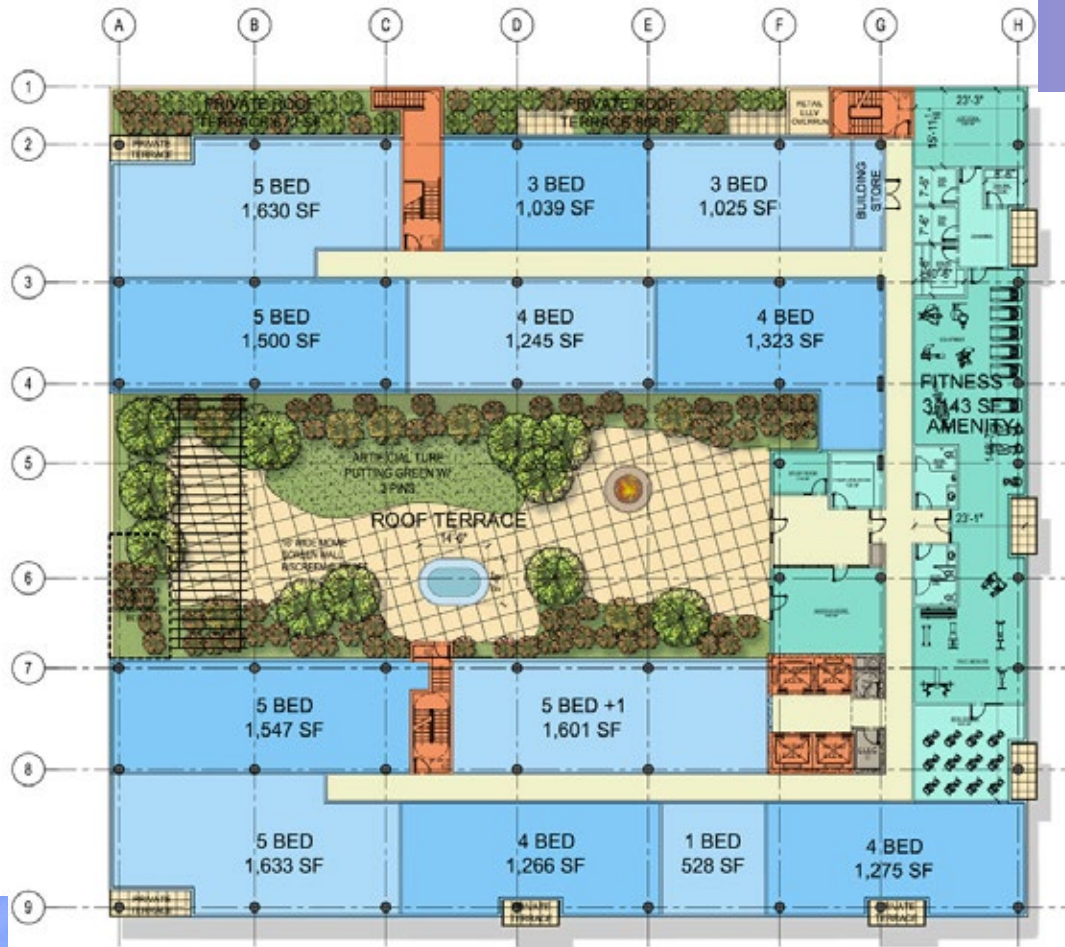
**Typical Trees**

*Swan Hill Olive*  
*Olea europaea 'Swan Hill'*

*Texas Mountain Laurel*  
*Sophora Secundiflora*

*Mediterranean Fan Palm*  
*Chamaerops humilis*

*Mexican Blue Palm*  
*Brahea armata*



**TREES, SHRUBS & GROUNDCOVER**







**The Hub On First  
First Street & Tyndall Avenue  
Tucson, Arizona**

**Plant Material Options**

*Trees are required to be Single Trunk  
Specimens*

*Shrubs within the sight visibility triangles  
must be under 30" tall.*

**TREE**

*Desert Museum Palo Verde  
Parkinsonia hybrid Single Trunk - 48" Box*



**SHRUBS AND GROUND COVER**

*Candillila  
Euphorbia antisyphiliica 5 Gal.  
Planters inside Sight Visibility Triangles*

*Damianita  
Chrysactinia mexicana 5 Gal.*

*Red yucca  
Hesperaloe parviflora 5 Gal.  
Planters outside Sight Visibility Triangles*







**The Hub at Tucson**  
**First Street & Tyndall Avenue**  
**Tucson, Arizona**

**Fifth, Ninth and Eleventh Floor Terraces**

**Typical Trees**

*Little Leaf Ash*  
*Fraxinus greggii*

*Texas Mountain Laurel*  
*Sophora secundiflora*



**TREES, SHRUBS & GROUNDCOVER**







**TREES, SHRUBS & GROUND COVER**

**The Hub at Tucson  
First Street & Tyndall Avenue  
Tucson, Arizona**

**Fifth , Ninth and Eleventh Floor Terrace Courtyards**

**Typical Shrubs and Groundcover**

*Bougainvillea 'Barbara Karst'*  
*Bougainvillea glabra*

*Bulbine 'Tiny Tangerine'*  
*Bulbine frutescens (dwarf) 5 Gal.*

*Compact Myrtle*  
*Myrtus communis 'Compacta'*

*Autumn Sage*  
*Salvia greggii*

*Trailing Rosemary*  
*Rosmarinus officinalis prostratus*

*Lady's Slipper*  
*Pedilanthus macrocarpus*



*Mexican Petunia*  
*Ruellia brittoniana 'Purple Showers'*

*Yellow Bells*  
*Tecoma stans 'var. Angustata'*







# TREES, SHRUBS & GROUNDCOVER

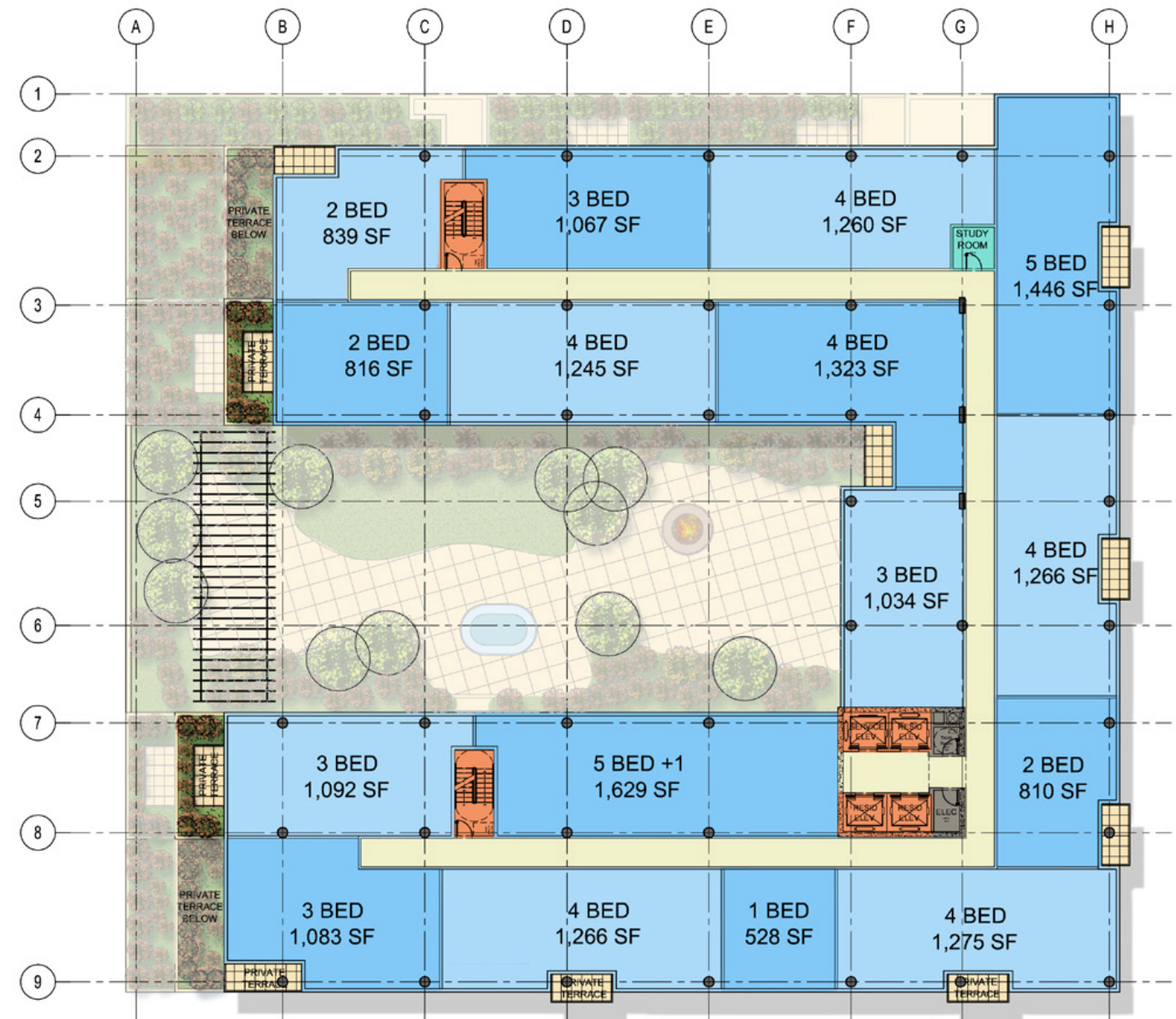
**The Hub at Tucson**  
**First Street & Tyndall Avenue**  
**Tucson, Arizona**

## Tenth Floor Terraces

### Typical Trees

*Little Leaf Ash*  
*Fraxinus greggii*

*Texas Mountain Laurel*  
*Sophoro Secundiflora*







**TREES, SHRUBS & GROUNDCOVER**

**The Hub at Tucson**  
**First Street & Tyndall Avenue**  
**Tucson, Arizona**

**Tenth Floor Terraces**

**Typical Shrubs and Groundcover**

*Green Desert Spoon*  
*Dasyliirion texanum*



*Cereus/ species*  
*Monstrore*



*Pachycereus marginatus*  
*Mexican Fence Post*



*Bougainvillea 'Barbara Karst'*  
*Bougainvillea glabra*

*Autumn Sage*  
*Salvia greggii*

*Brakelights Red Yucca*  
*Hesperaloe parviflora 'Perpa' Brakelights*



*Trailing Rosemary*  
*Rosmarinus officinalis prostratus*



*Ruellia brittoniana 'Purple Showers'*  
*Mexican Petunia*



*Yellow Bells*  
*Tecoma stans 'var. Angustata*

