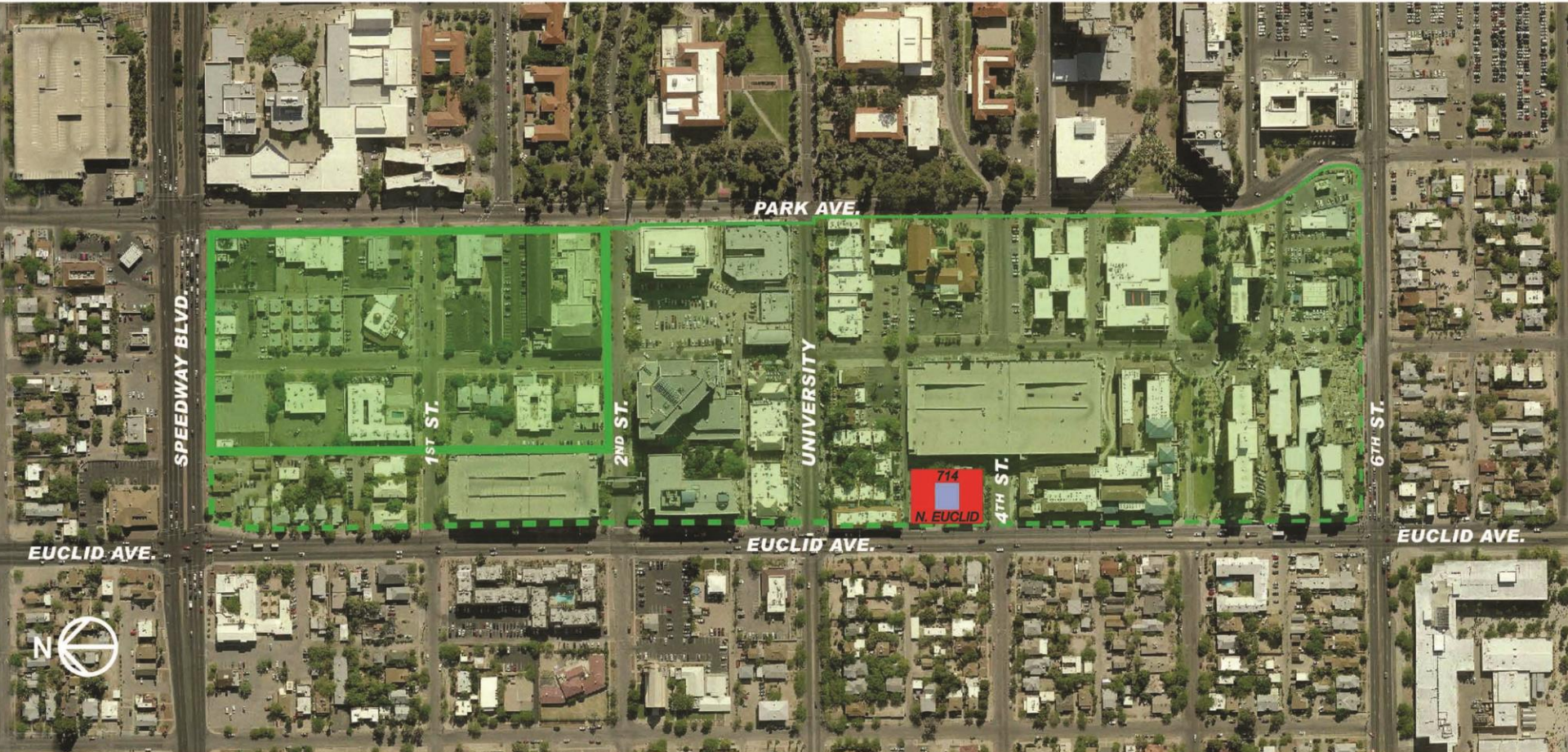


WEST UNIVERSITY HISTORIC DISTRICT
— HISTORIC DISTRICT BOUNDARY

TRANSITION AREA

7•ONE•4 NORTH EUCLID AVE. TUCSON, AZ
SECTION 3.B REPLACEMENT PLAN

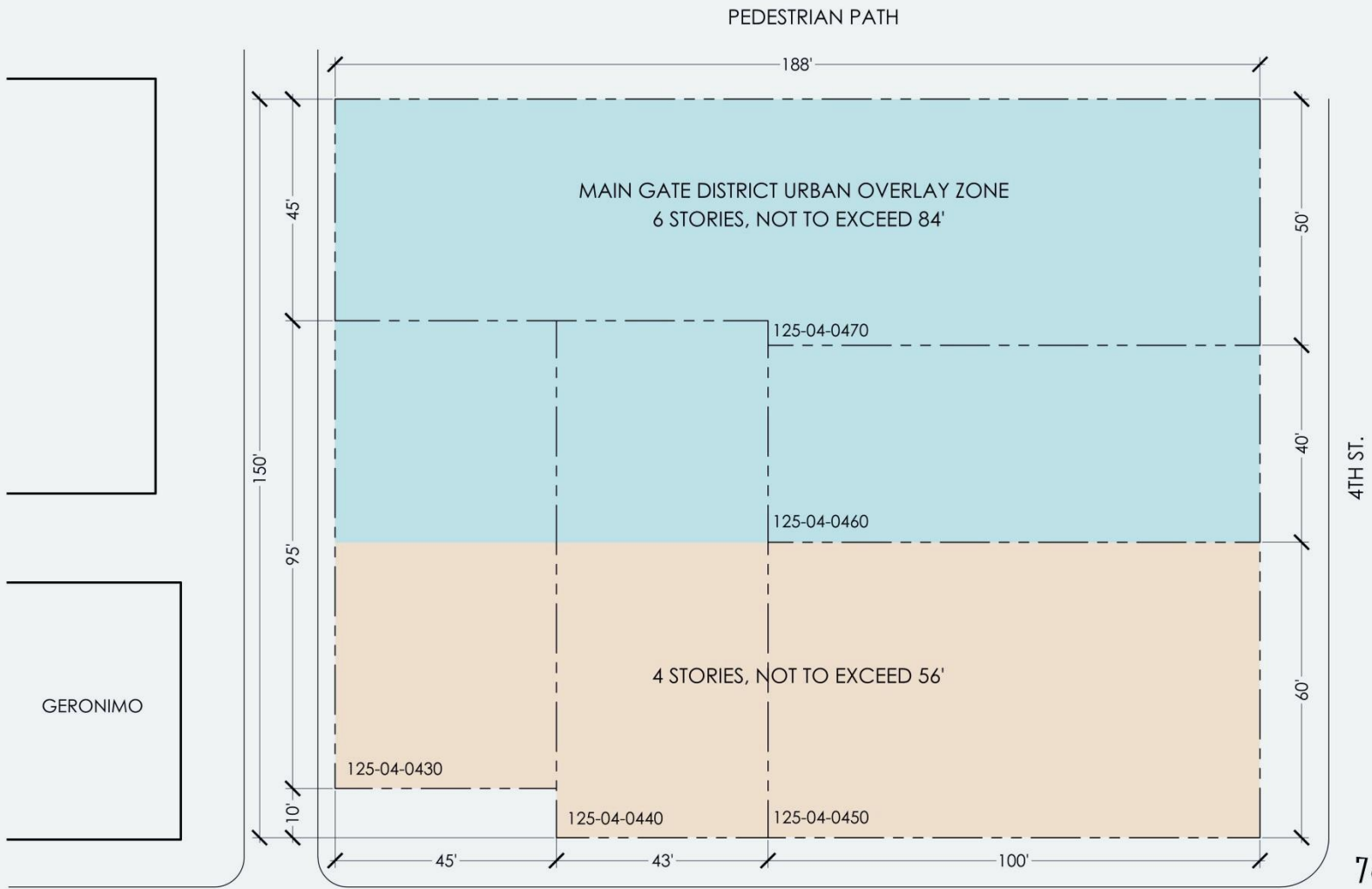
VINT & ASSOCIATES ARCHITECTS
312 East Sixth Street Tucson, AZ 85705



714 N. EUCLID AVE. TUCSON, AZ
PROPOSED MIXED-USE INFILL DEVELOPMENT: HOTEL ABOVE GROUND FLOOR RETAIL

MAIN GATE URBAN OVERLAY DISTRICT / WEST UNIVERSITY TRANSITION AREA





714 N. EUCLID AVE. - MID-RISE MIXED-USE

EUCLID AVE.



7•ONE•4, LLC





HISTORIC PRECEDENT – GERONIMO HOTEL BUILT TO STREET FRONT



HISTORIC PRECEDENT – GERONIMO HOTEL ARCADE

7 • ONE • 4 NORTH EUCLID AVE. TUCSON, AZ
SECTION 3.B REPLACEMENT PLAN



HISTORIC PRECEDENT – GERONIMO HOTEL ARCADE

7•ONE•4 NORTH EUCLID AVE. TUCSON, AZ
SECTION 3.B REPLACEMENT PLAN



HISTORIC PRECEDENT – GERONIMO HOTEL ARCADE



HISTORIC PRECEDENT – SIGNS

CREATIONS



HISTORIC PRECEDENT – SIGNS





HISTORIC PRECEDENT – BRICK DETAILS



HISTORIC PRECEDENT – BRICK DETAILS



*HISTORIC PRECEDENT – 1st CHISTIAN CHURCH, EUCLID AVE. & SPEEDWAY
ARTHUR BROWN , ARCHITECT 1948*



*HISTORIC PRECEDENT – TUCSON HIGH SCHOOL STADIUM, N. 3rd AVE. @ 6th ST.
LYMAN & PLACE , ARCHITECTS, 1924*

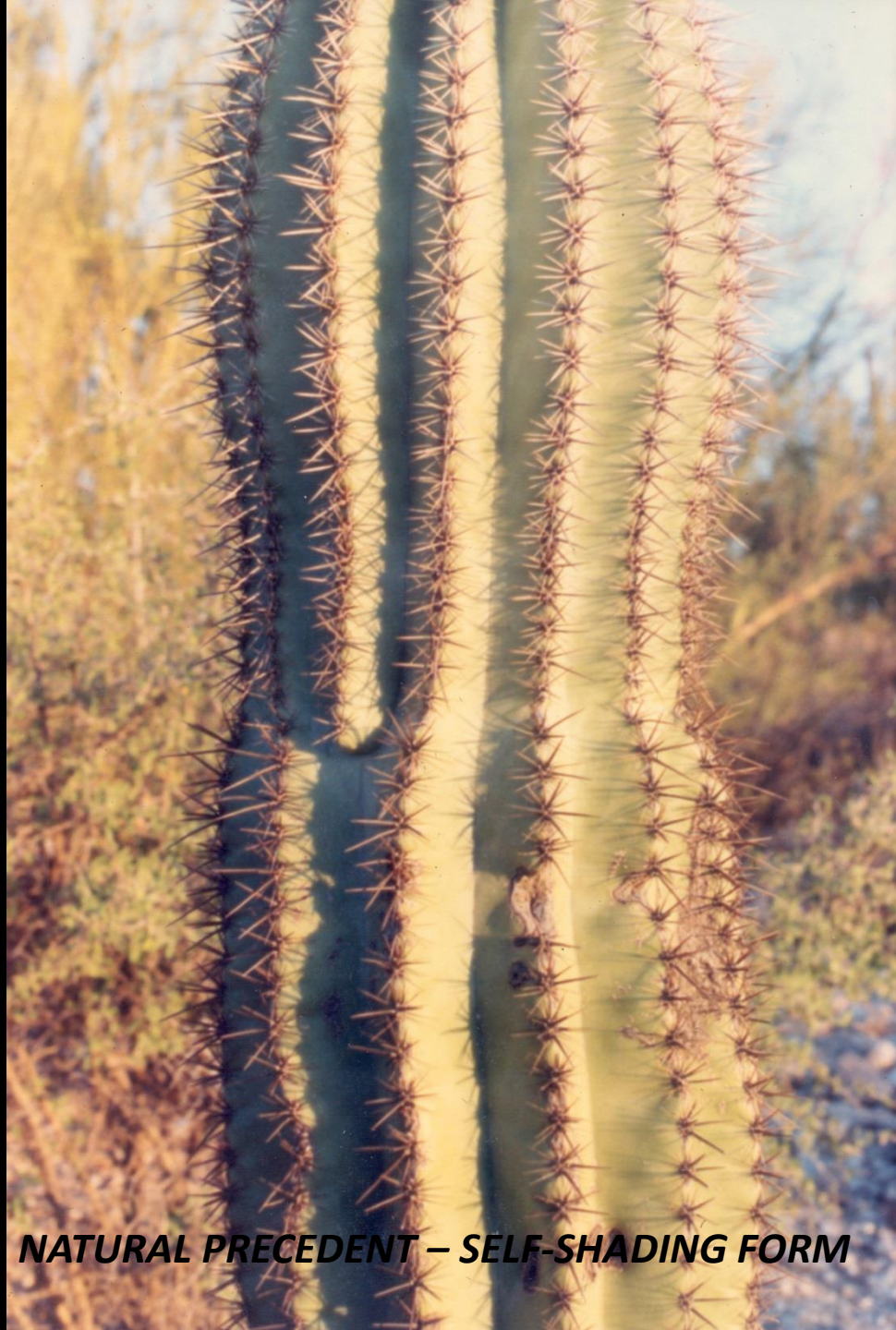
A photograph of the Tucson High School building, a large, multi-story structure made of light-colored brick. The building has a prominent central entrance with a dark, recessed doorway. Above the entrance, a white horizontal band contains the words "TUCSON HIGH SCHOOL" in dark, serif capital letters. To the left of the entrance, there is a small plaque on the brick wall. A person is walking on the sidewalk in front of the entrance. The sky is blue with some light clouds. A red car is partially visible on the right side of the frame.

TUCSON HIGH SCHOOL

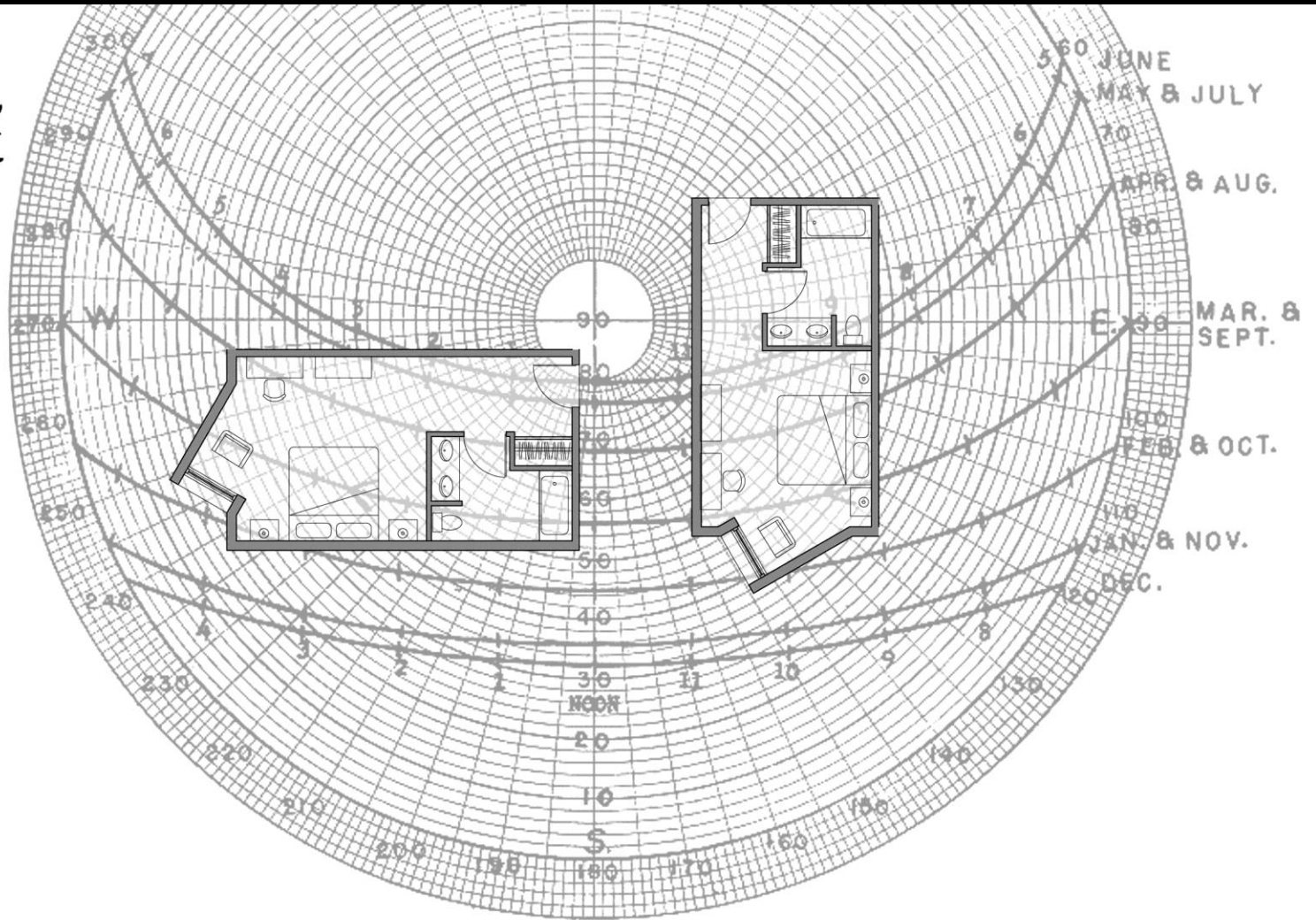
*HISTORIC PRECEDENT – TUCSON HIGH SCHOOL STADIUM, N. 3rd AVE. @ 6th ST.
LYMAN & PLACE, ARCHITECTS, 1924*



**HISTORIC PRECEDENT – TUCSON H.S. STADIUM, 3rd AVE. @ 6th ST.
LYMAN & PLACE , ARCHITECTS, 1924**

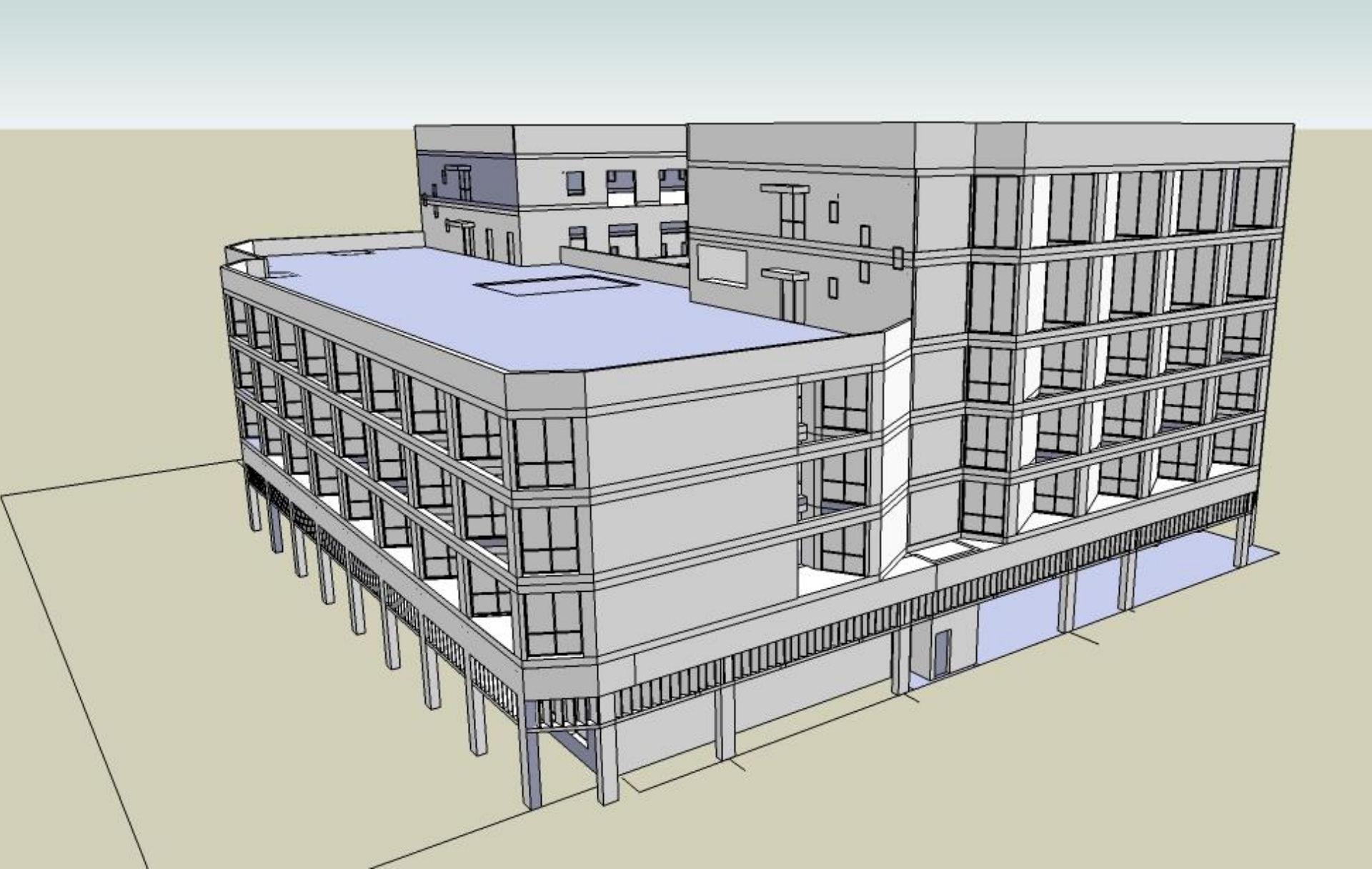


NATURAL PRECEDENT – SELF-SHADING FORM



SUN PATH DIAGRAM

VINT & ASSOCIATES ARCHITECTS
312 East Sixth Street Tucson, AZ 85705



VOLUME STUDY, HOTEL EUCLID – VINT & ASSOC. ARCHITECTS, 2014

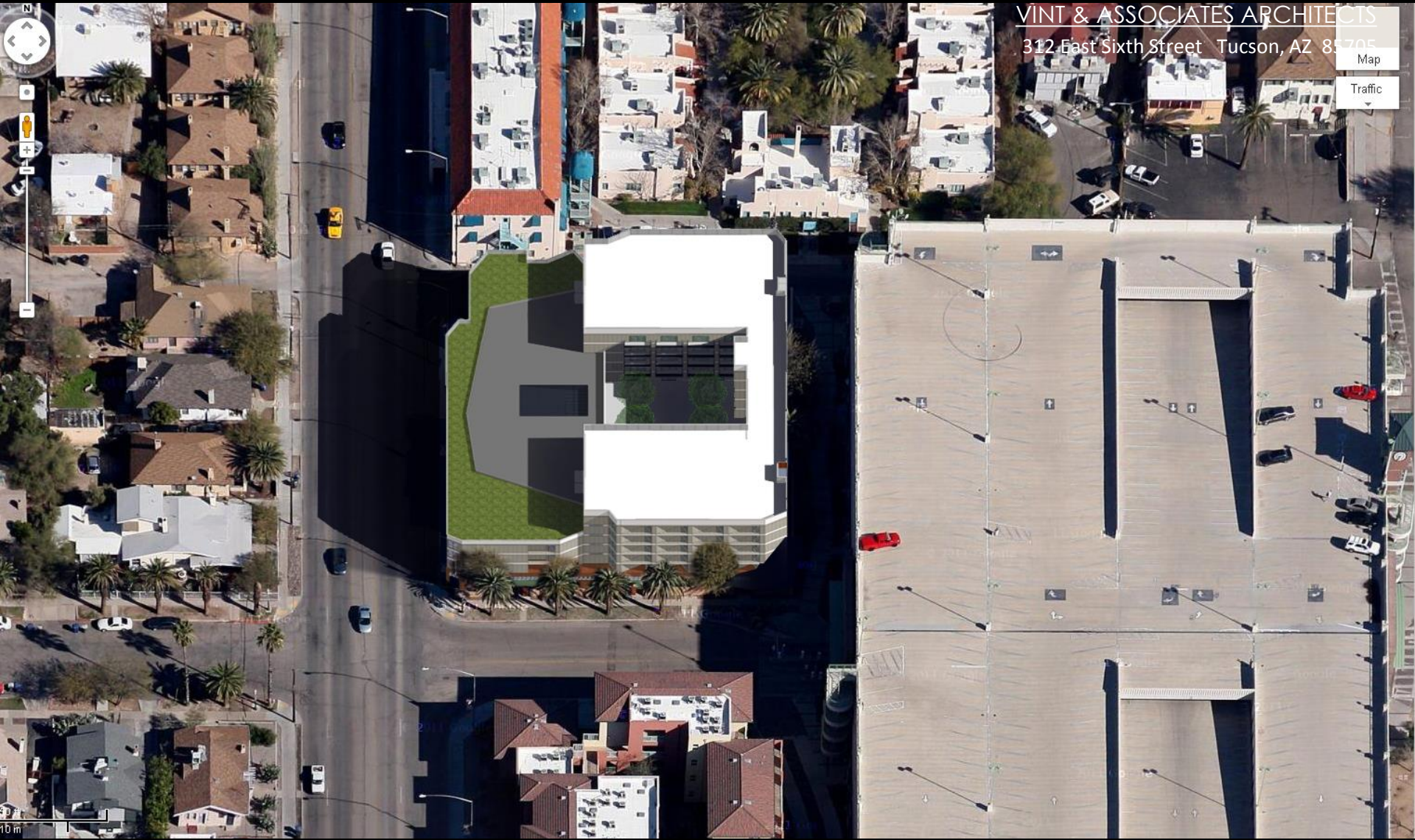
7 ONE 4 NORTH EUCLID AVE. TUCSON, AZ
SECTION 3.B REPLACEMENT PLAN

VINT & ASSOCIATES ARCHITECTS

312 East Sixth Street Tucson, AZ 85705

Map

Traffic



7-ONE-4 NORTH EUCLID AVE. TUCSON, AZ
SECTION 3.B REPLACEMENT PLAN

VINT & ASSOCIATES ARCHITECTS

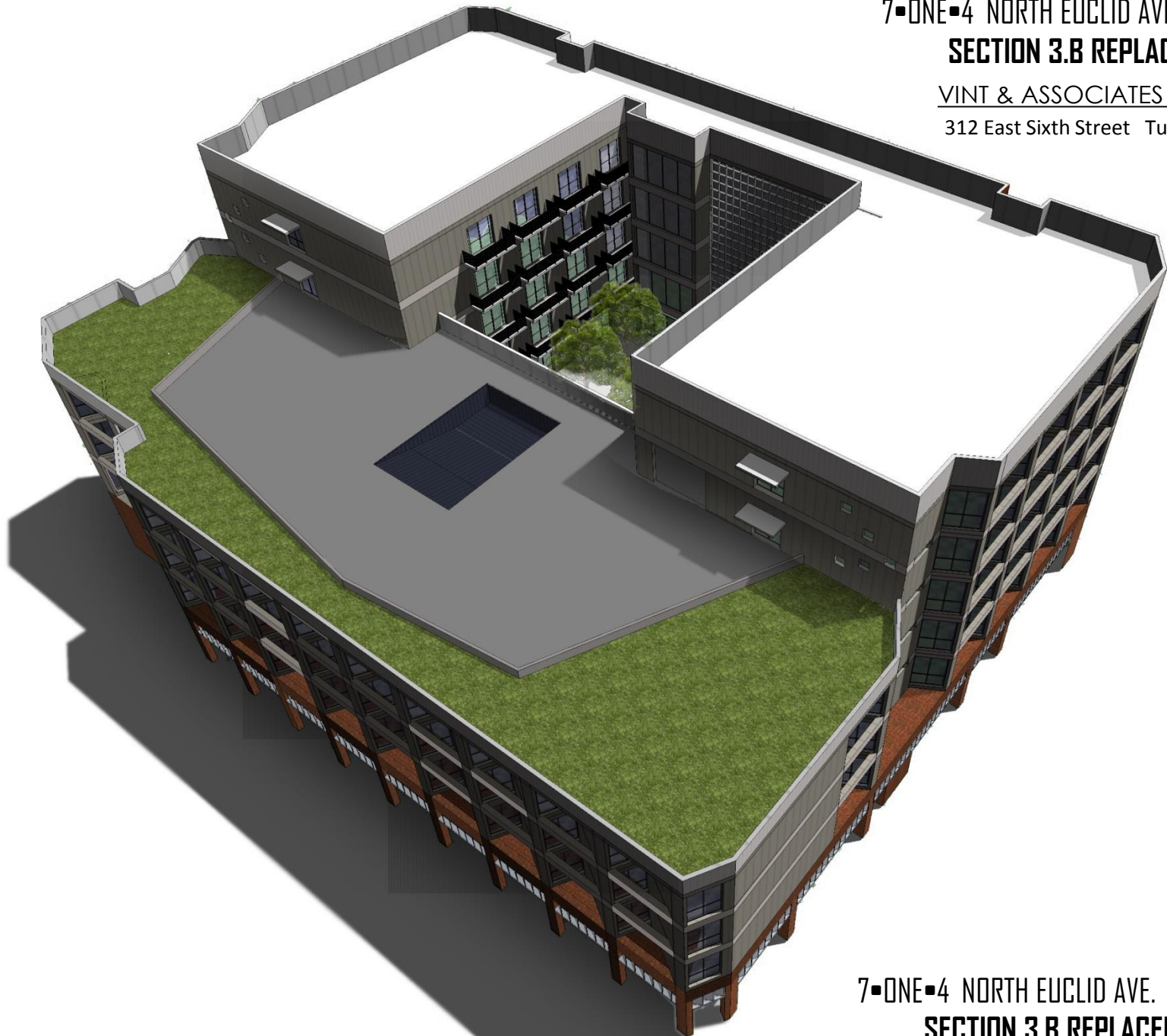
312 East Sixth Street Tucson, AZ 85705



7•ONE•4 NORTH EUCLID AVE. TUCSON, AZ
SECTION 3.B REPLACEMENT PLAN

VINT & ASSOCIATES ARCHITECTS

312 East Sixth Street Tucson, AZ 85705



7•ONE•4 NORTH EUCLID AVE. TUCSON, AZ
SECTION 3.B REPLACEMENT PLAN

7•ONE•4 NORTH EUCLID AVE. TUCSON, AZ
SECTION 3.B REPLACEMENT PLAN

VINT & ASSOCIATES ARCHITECTS

312 East Sixth Street Tucson, AZ 85705



7•ONE•4 NORTH EUCLID AVE. TUCSON, AZ
SECTION 3.B REPLACEMENT PLAN

VINT & ASSOCIATES ARCHITECTS

312 East Sixth Street Tucson, AZ 85705



7•ONE•4 NORTH EUCLID AVE. TUCSON, AZ
SECTION 3.B REPLACEMENT PLAN

7•ONE•4 NORTH EUCLID AVE. TUCSON, AZ
SECTION 3.B REPLACEMENT PLAN

VINT & ASSOCIATES ARCHITECTS
312 East Sixth Street Tucson, AZ 85705



7•ONE•4 NORTH EUCLID AVE. TUCSON, AZ
SECTION 3.B

140'
A.F.G.

96'
A.F.G.

75'
A.F.G.

33'
A.F.G.

35'
A.F.G.

80'
A.F.G.

54'
A.F.G.





13.12 - 7 one 4 HOTEL - 714 N. EUCLID AVE, AZ 85719 - SECTION 3B - REPLACEMENT PLAN

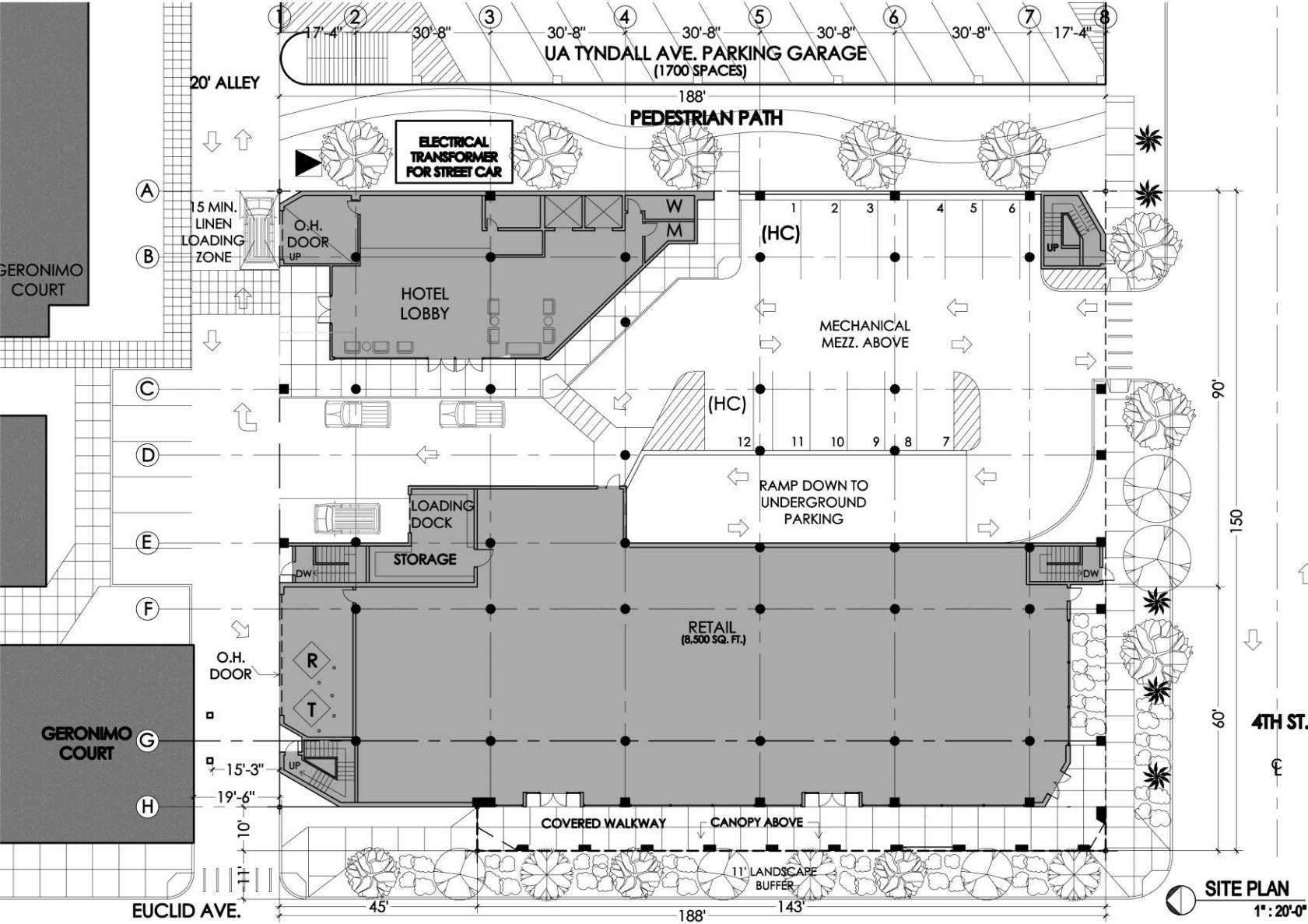
VINT & ASSOCIATES ARCHITECTS
312 E. 6th St. Tucson AZ 85705 P.O. Box 648 Tucson, AZ 85702 P. (520) 882-5252 F. (520) 882-5449

Date: 13/06/14
Scale: All notes
Drawn by: M.G.

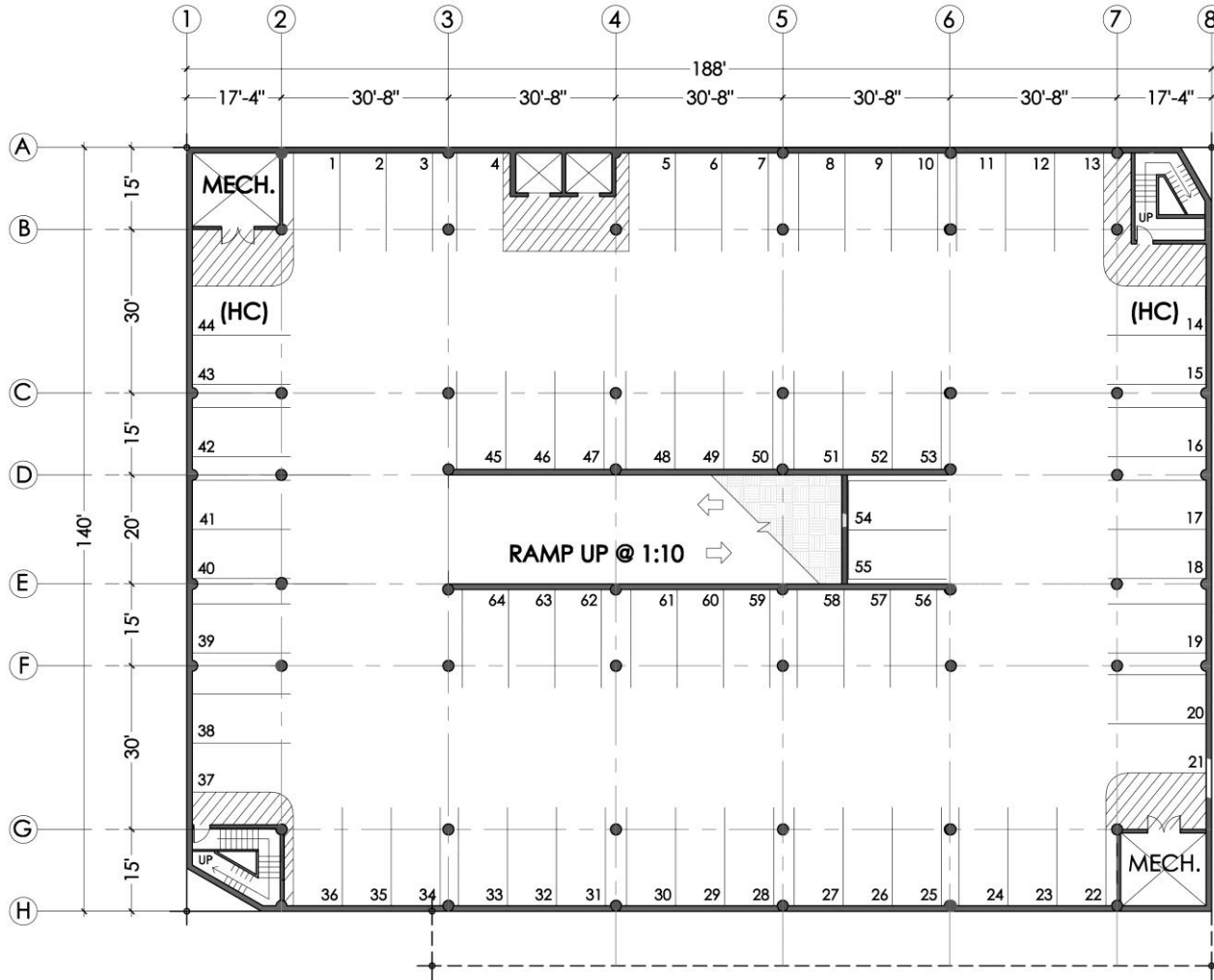
Revisions:
By: _____ Date: _____

SITE PLAN

A1.0



SITE PLAN
1" = 20'-0"




PARKING GARAGE PLAN
 1" : 20'-0"

13.12 - 7 one 4 HOTEL - 714 N. EUCLID AVE, AZ 85719 - SECTION 3B - REPLACEMENT PLAN

VINT & ASSOCIATES ARCHITECTS

312 E. 6th St. Tucson AZ 85705 P.O. Box 648 Tucson, AZ 85702 P. (520) 882-5232 F. (520) 882-5449

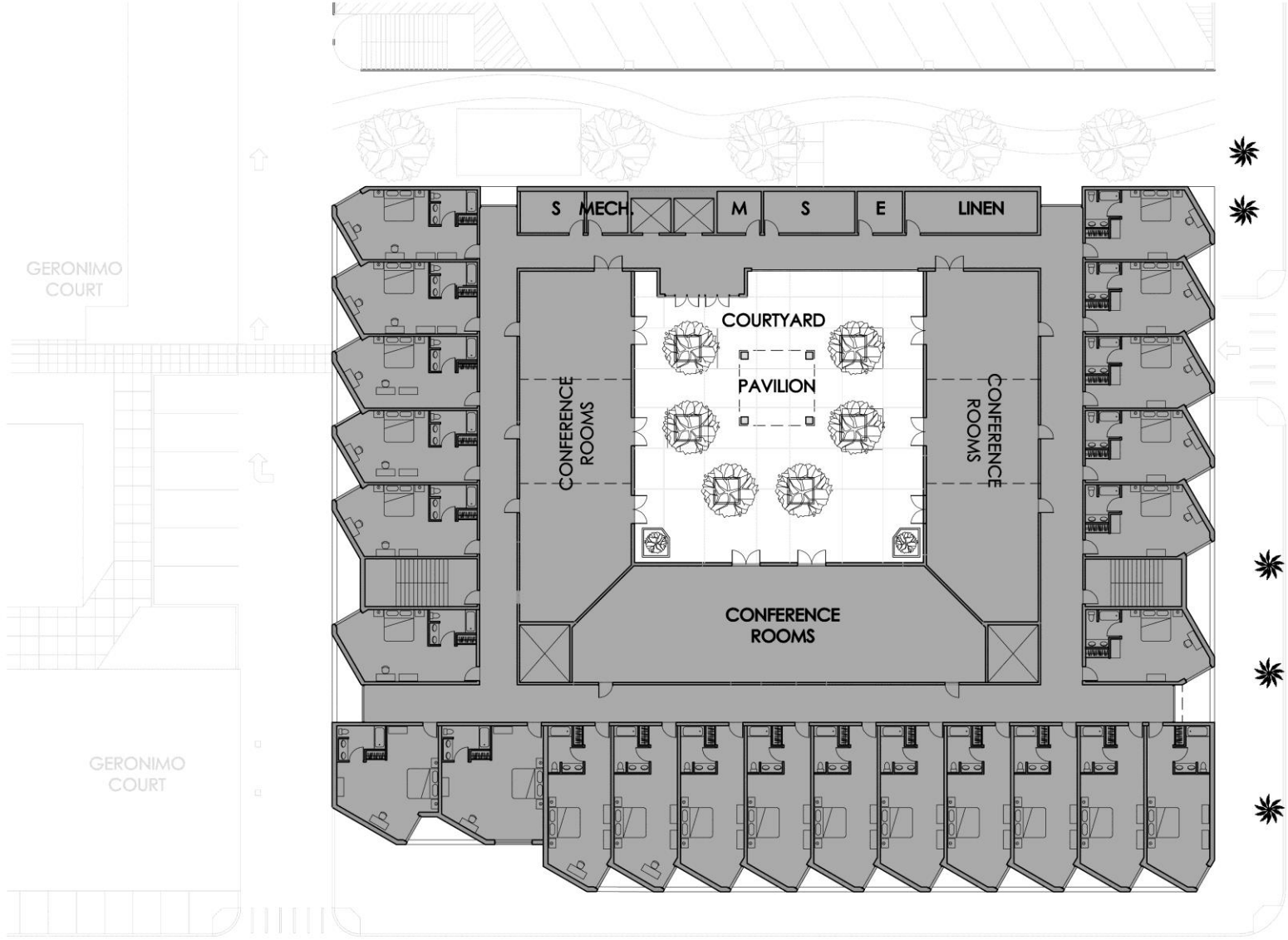
Date: 13/06/14
 Scale: as noted
 Drawn by: M.G.

Revisions:
 By: _____ Date: _____

PARKING GARAGE

A (-1)






2ND FLOOR PLAN
 1" : 20'-0"

13.12 - 7 one 4 HOTEL - 714 N. EUCLID AVE, AZ 85719 - SECTION 3B - REPLACEMENT PLAN

VINT & ASSOCIATES ARCHITECTS

312 E. 6th St. Tucson AZ 85705 P.O. Box 648 Tucson, AZ 85702 P. (520) 882-5232 F. (520) 882-5449



Date: 13/06/14
 Scale: All notes
 Drawn by: M.G.

Revisions:
 By: _____ Date: _____

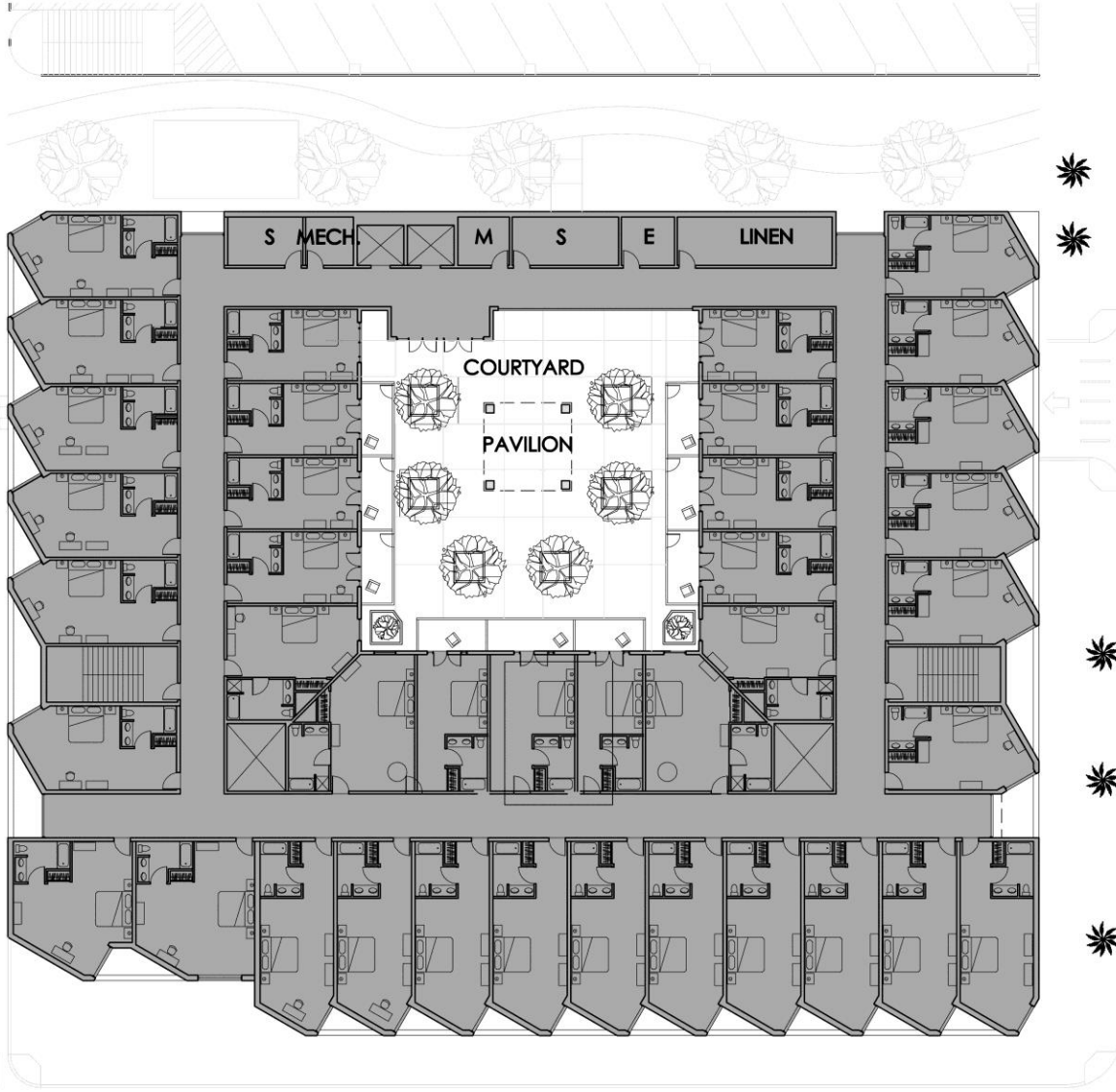


SECOND FLOOR PLAN

A2.0

GERONIMO COURT

GERONIMO COURT



3RD FLOOR PLAN (4TH FLOOR SIMILAR)

1" = 20'-0"

13.12 - 7 one 4 HOTEL - 714 N. EUCLID AVE, AZ 85719 - SECTION 3B - REPLACEMENT PLAN

VINT & ASSOCIATES ARCHITECTS

312 E. 6th St. Tucson AZ 85705 P.O. Box 648 Tucson, AZ 85702 P. (520) 882-5232 F. (520) 882-5449



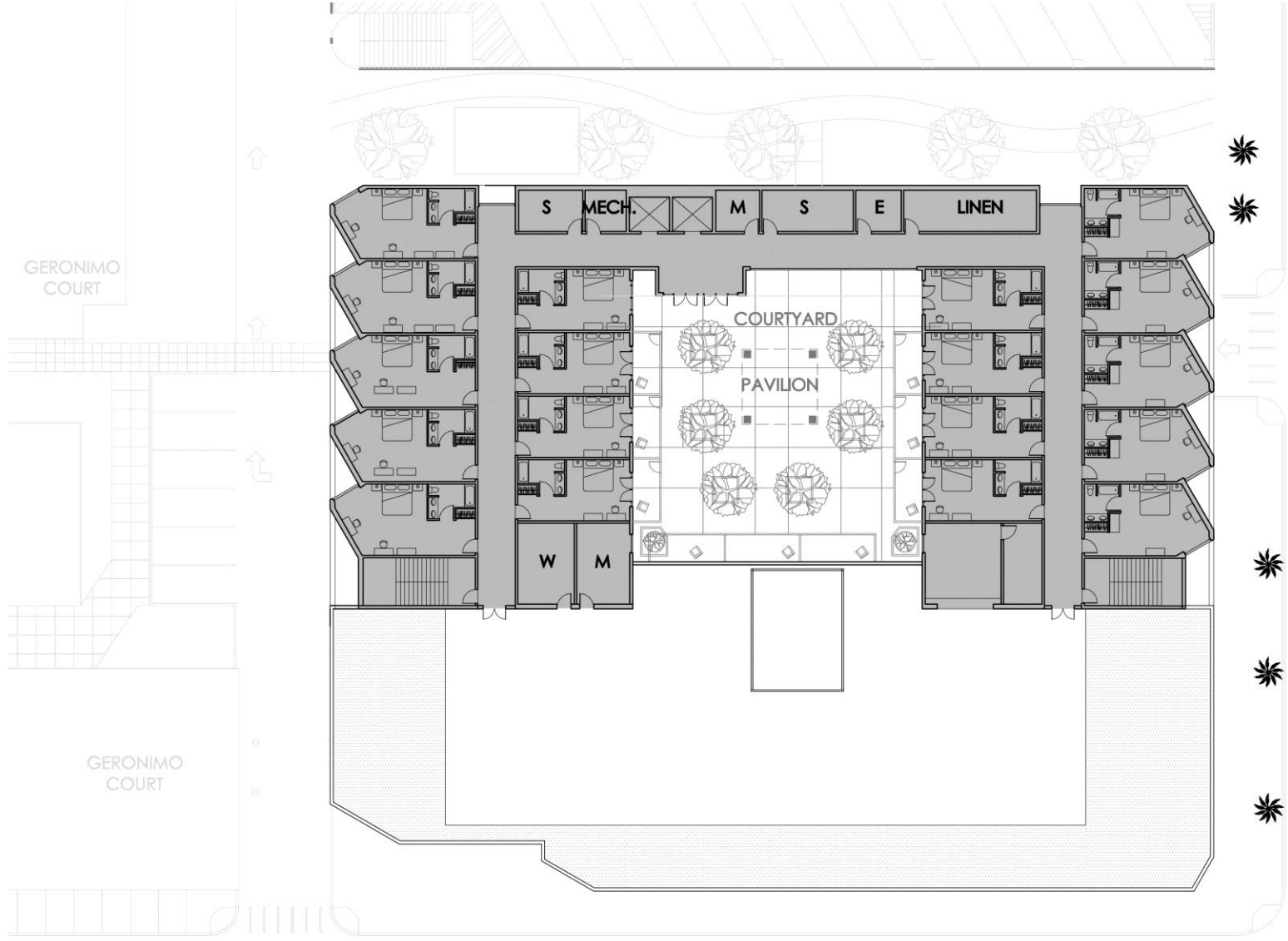
Date: 13/06/14
Scale: as noted
Drawn by: M.G.


Revisions:
By: _____ Date: _____



THIRD FLOOR PLAN

A2.1




5TH FLOOR PLAN (6TH FLOOR SIMILAR)
 1" : 20'-0"

13.12 - 7 one 4 HOTEL - 714 N. EUCLID AVE, AZ 85719 - SECTION 3B - REPLACEMENT PLAN

VINT & ASSOCIATES ARCHITECTS

312 E. 6th St. Tucson AZ 85705 P.O. Box 648 Tucson, AZ 85702 P. (520) 882-5232 F. (520) 882-5449



Date: 13/06/14
 Scale: as noted
 Drawn by: M.G.

Revisions:
 By: _____ Date: _____



FIFTH FLOOR PLAN

A2.2

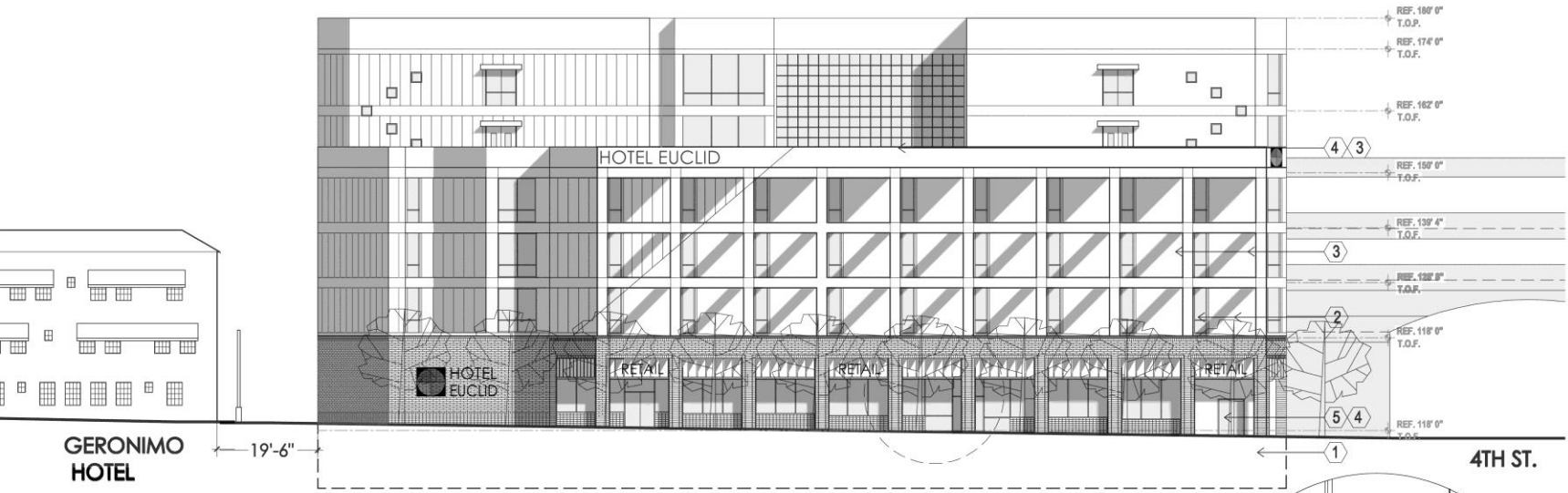


13.12 - 7 one 4 HOTEL - 714 N. EUCLID AVE, AZ 85719 - SECTION 3B - REPLACEMENT PLAN

VINT & ASSOCIATES ARCHITECTS
312 E 6th St. Tucson AZ 85705 P.O. Box 648 Tucson, AZ 85702 P. (520) 882-5232 F. (520) 882-5449

KEY NOTES

- ① FACE BRICK ON CONCRETE FRAME
- ② PRE-FIN. INSULATING METAL PANEL ON STEEL FRAMING
- ③ INSULATING GLASS
- ④ PRE-FIN. METAL SUNSCREEN/LOUVER
- ⑤ COMPATIBLE SIGNANGE SYSTEM



GERONIMO HOTEL

19'-6"

HOTEL EUCLID

HOTEL EUCLID

RETAIL

RETAIL

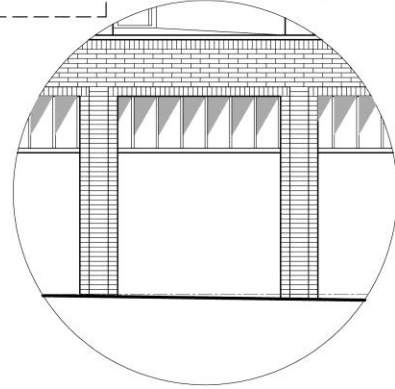
RETAIL

REF. 180' 0" T.O.P.
REF. 174' 0" T.O.F.
REF. 162' 0" T.O.F.
REF. 150' 0" T.O.F.
REF. 139' 4" T.O.F.
REF. 128' 8" T.O.F.
REF. 118' 0" T.O.F.
REF. 118' 0" T.O.F.

4TH ST.

① WEST ELEVATION

1" : 20'-0"



Date: 13/06/14
Scale: All notes
Drawn by: M.G.

Revisions:
By: _____ Date: _____

ELEVATIONS

A.4



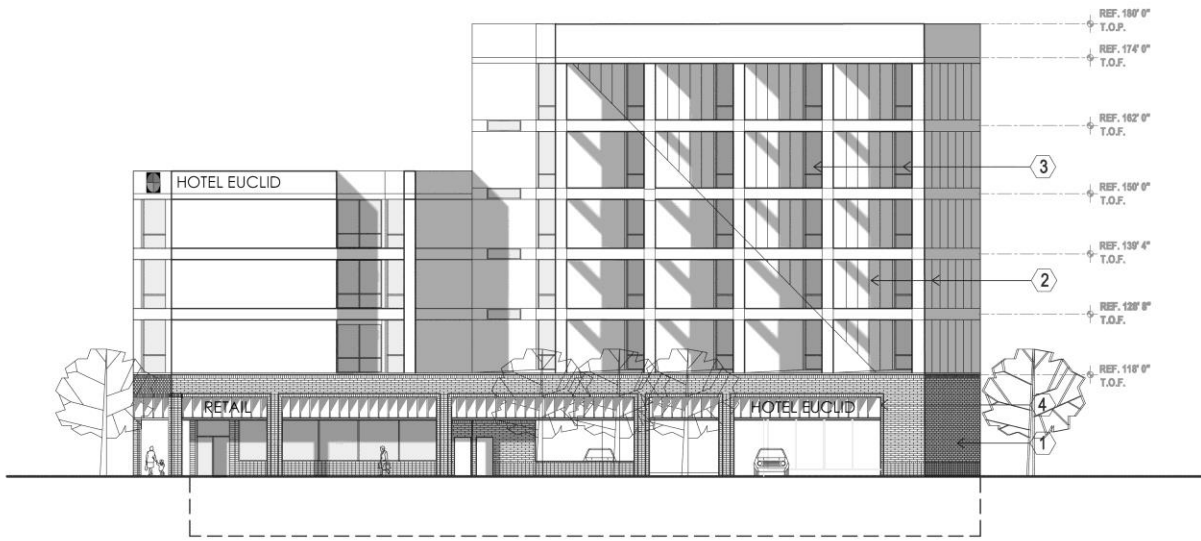
13.12 - 7 one 4 HOTEL - 714 N. EUCLID AVE, AZ 85719 - SECTION 3B - REPLACEMENT PLAN

VINT & ASSOCIATES ARCHITECTS

312 E. 6th St. Tucson AZ 85705 P.O. Box 648 Tucson, AZ 85702 P. (520) 882-5232 F. (520) 882-5449

KEY NOTES

- ① FACE BRICK ON CONCRETE FRAME
- ② PRE-FIN. INSULATING METAL PANEL ON STEEL FRAMING
- ③ INSULATING GLASS
- ④ PRE-FIN. METAL SUNSCREEN/LOUVER



① SOUTH ELEVATION
1" : 20'-0"

Date: 13/06/14
Scale: All notes
Drawn by: M.G.

Revisions:
By: _____ Date: _____



ELEVATIONS

A.6



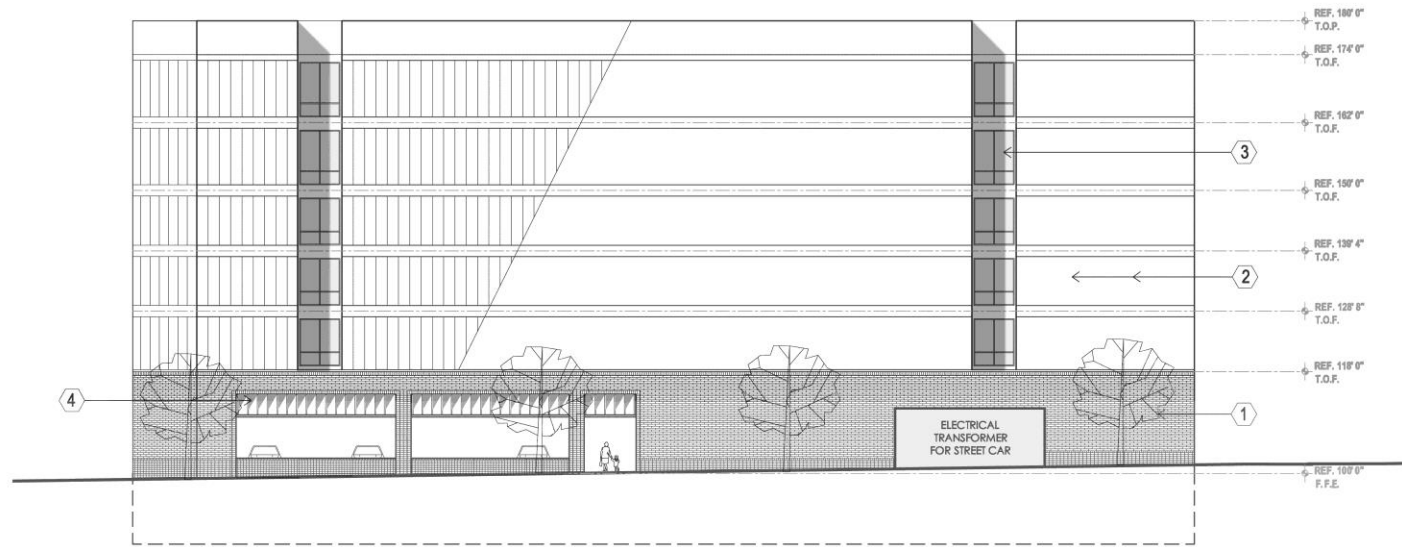
13.12 - 7 one 4 HOTEL - 714 N. EUCLID AVE, AZ 85719 - SECTION 3B - REPLACEMENT PLAN

VINT & ASSOCIATES ARCHITECTS

312 E. 6th St. Tucson AZ 85705 P.O. Box 6481 Tucson, AZ 85702 P. (520) 882-5232 F. (520) 882-5449

KEY NOTES

- ① FACE BRICK ON CONCRETE FRAME
- ② PRE-FIN. INSULATING METAL PANEL ON STEEL FRAMING
- ③ INSULATING GLASS
- ④ PRE-FIN. METAL SUNSCREEN/LOUVER



① EAST ELEVATION
1" : 20'-0"

Date: 13/06/14
Scale: as noted
Drawn by: M.G.

Revisions:
By: _____ Date: _____



ELEVATIONS

A.6



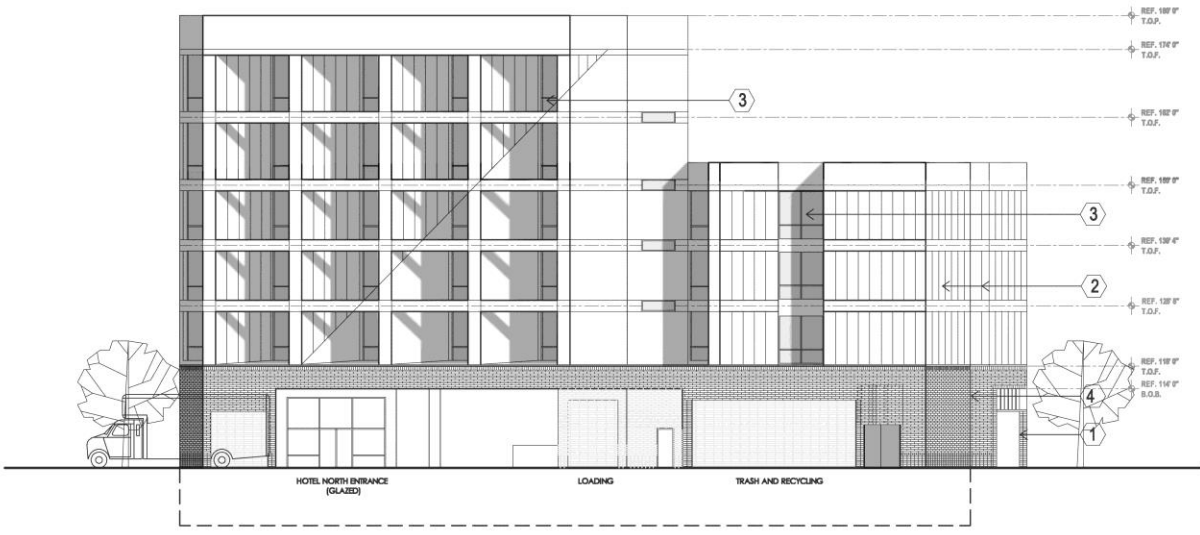
13.12 - 7 one 4 HOTEL - 714 N. EUCLID AVE, AZ 85719 - SECTION 3B - REPLACEMENT PLAN

VINT & ASSOCIATES ARCHITECTS

312 E. 6th St. Tucson AZ 85705 P.O. Box 6481 Tucson, AZ 85770 P. (520) 882-5232 F. (520) 882-5449

KEY NOTES

- ① FACE BRICK ON CONCRETE FRAME
- ② PRE-FIN. INSULATING METAL PANEL ON STEEL FRAMING
- ③ INSULATING GLASS
- ④ PRE-FIN. METAL SUNSCREEN/LOUVER



① NORTH ELEVATION

1" : 20'-0"

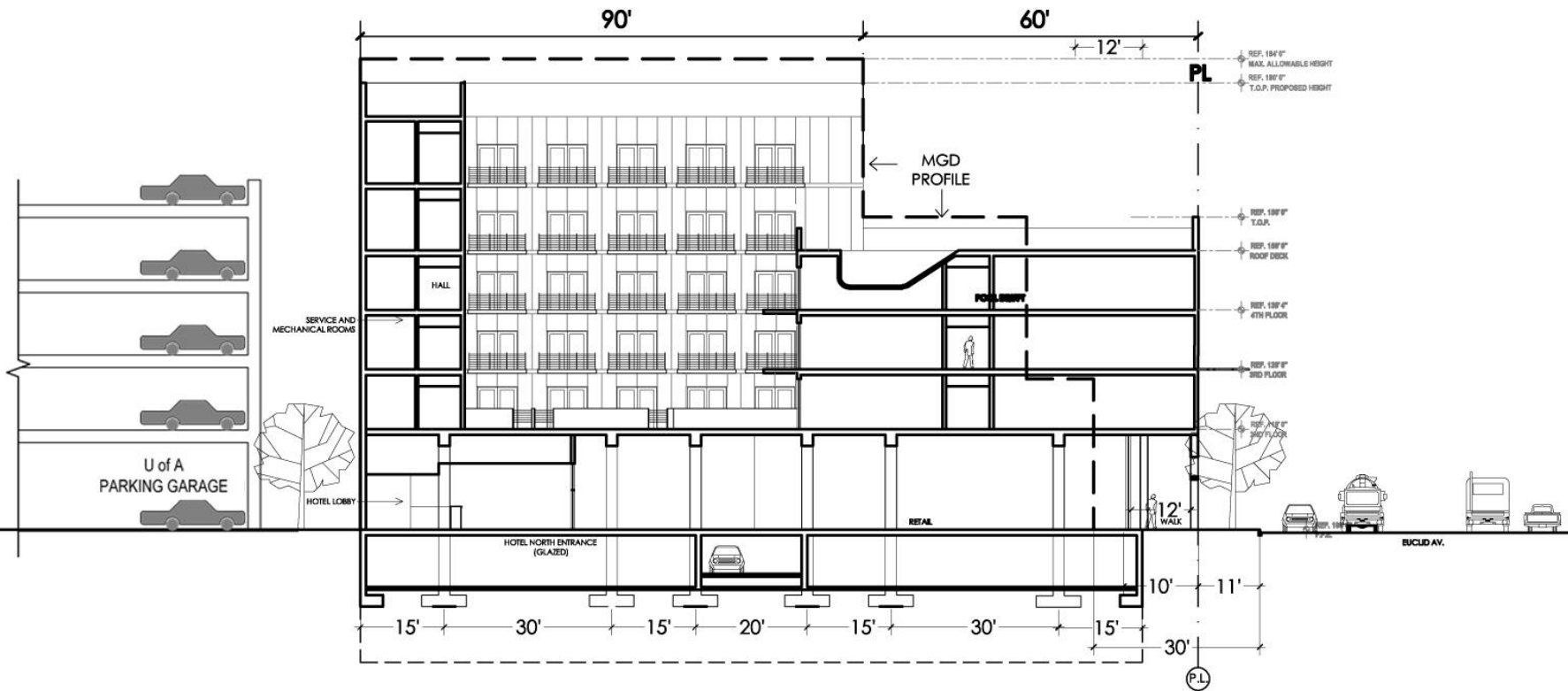
Date: 13/06/14
Scale: AS NOTED
Drawn by: M.G.

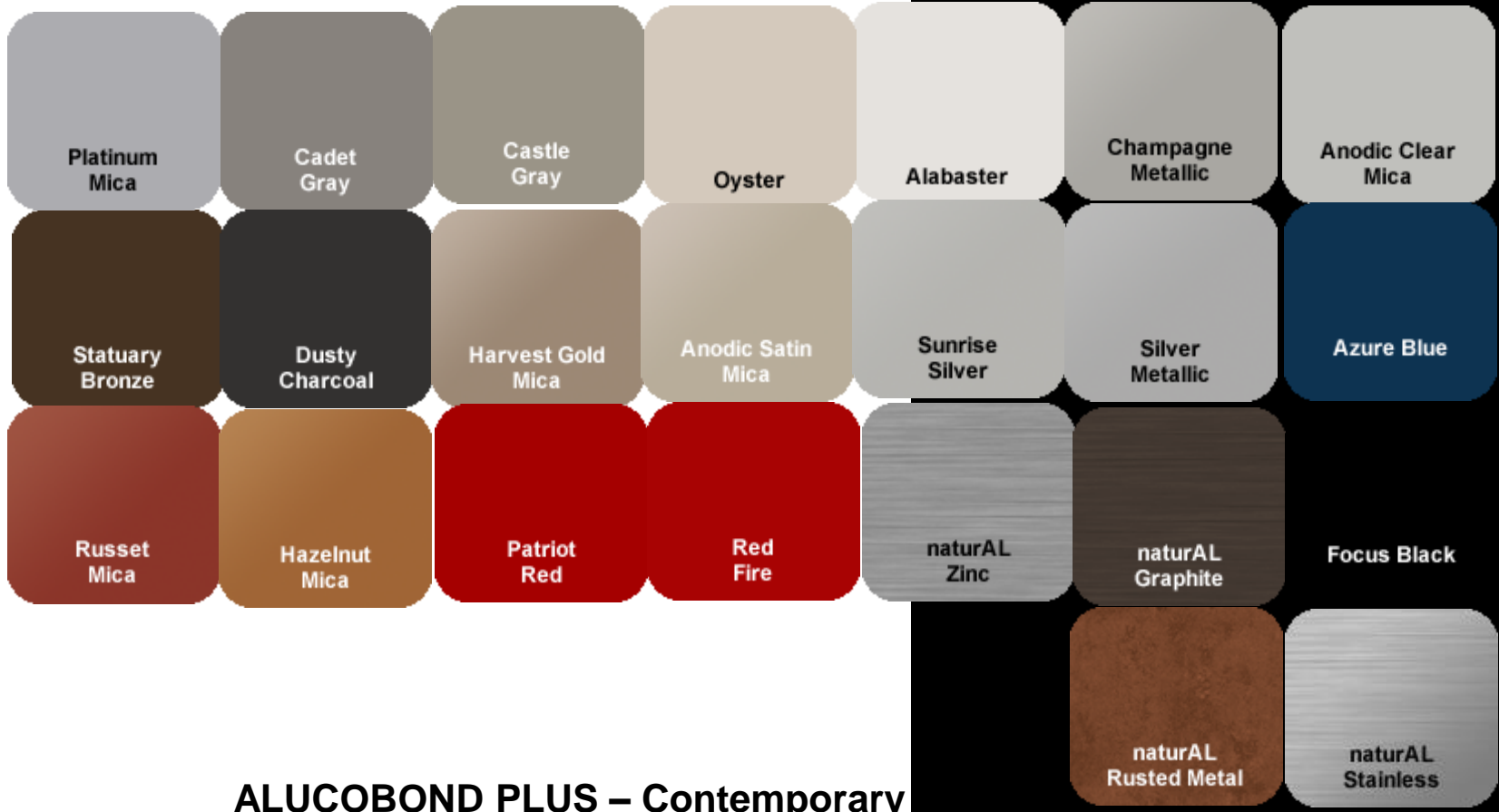
Revisions:
By: _____
Date: _____



ELEVATIONS

A.5





ALUCOBOND PLUS – Contemporary

MATERIALS



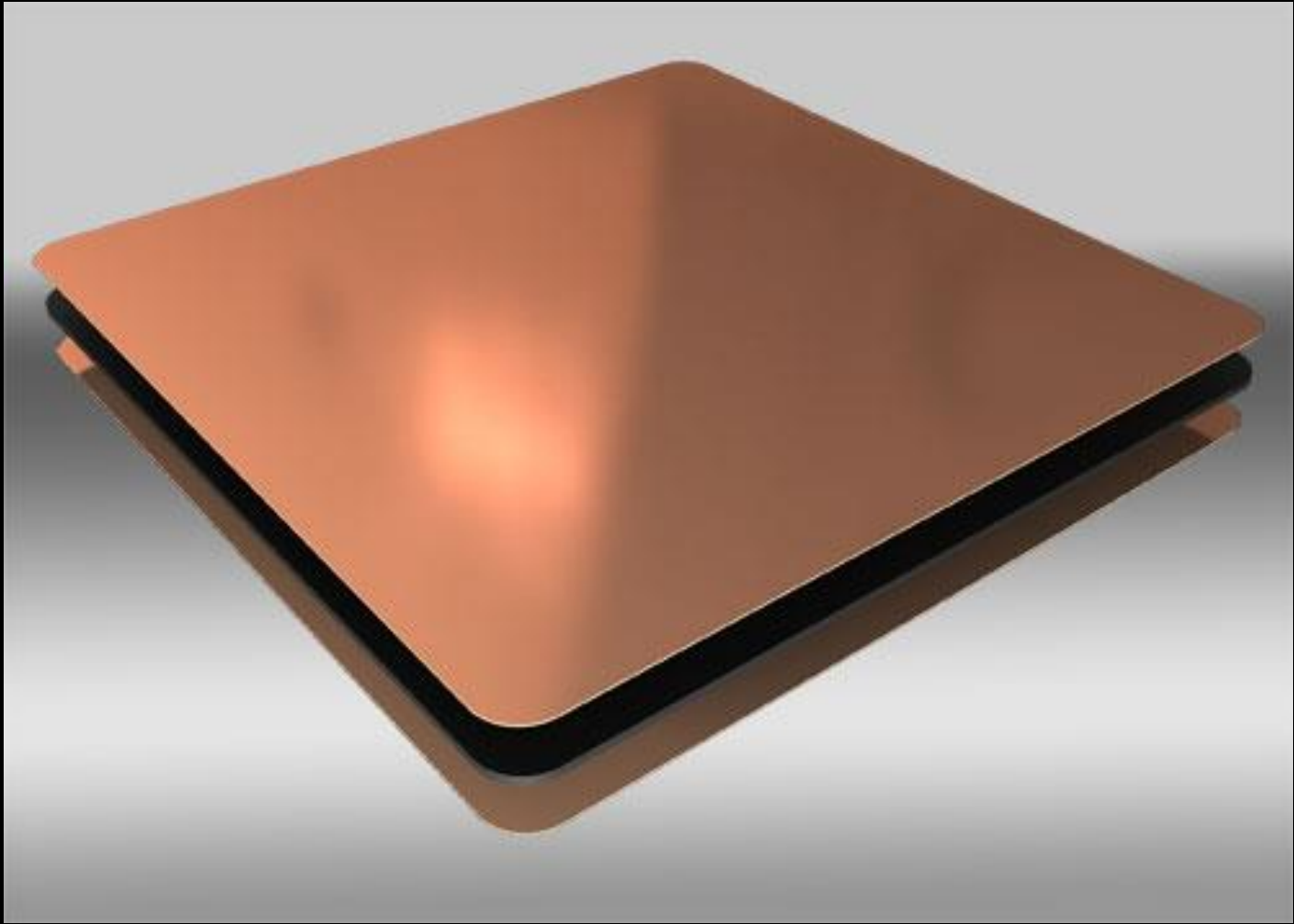
MATERIAL PRECEDENT – VANDERBILT UNIV.

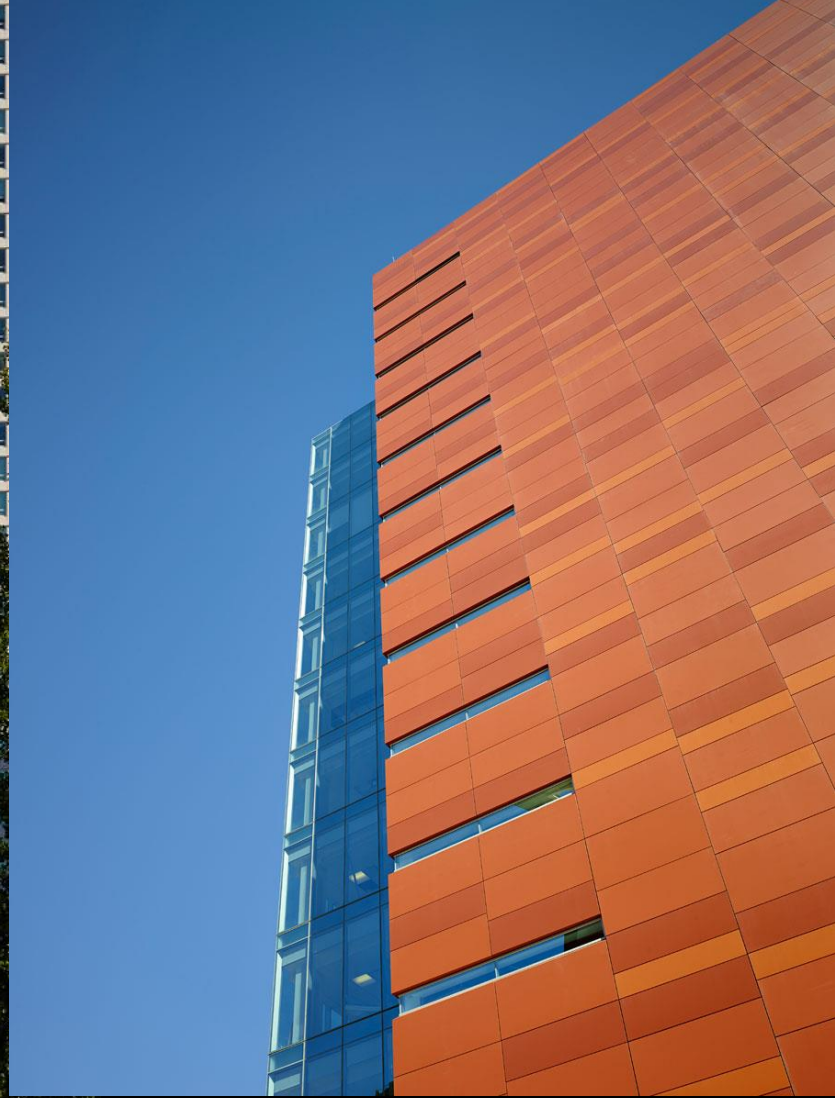


MATERIAL PRECEDENT – VANDERBILT UNIV.



“STAR” Insulated Prefinished Metal Panels







Russet
Mica



Hazelnut
Mica



Chipotle



Copper
Penny

7-ONE-4 NORTH EUCLID AVE. TUCSON, AZ
SECTION 3.B REPLACEMENT PLAN

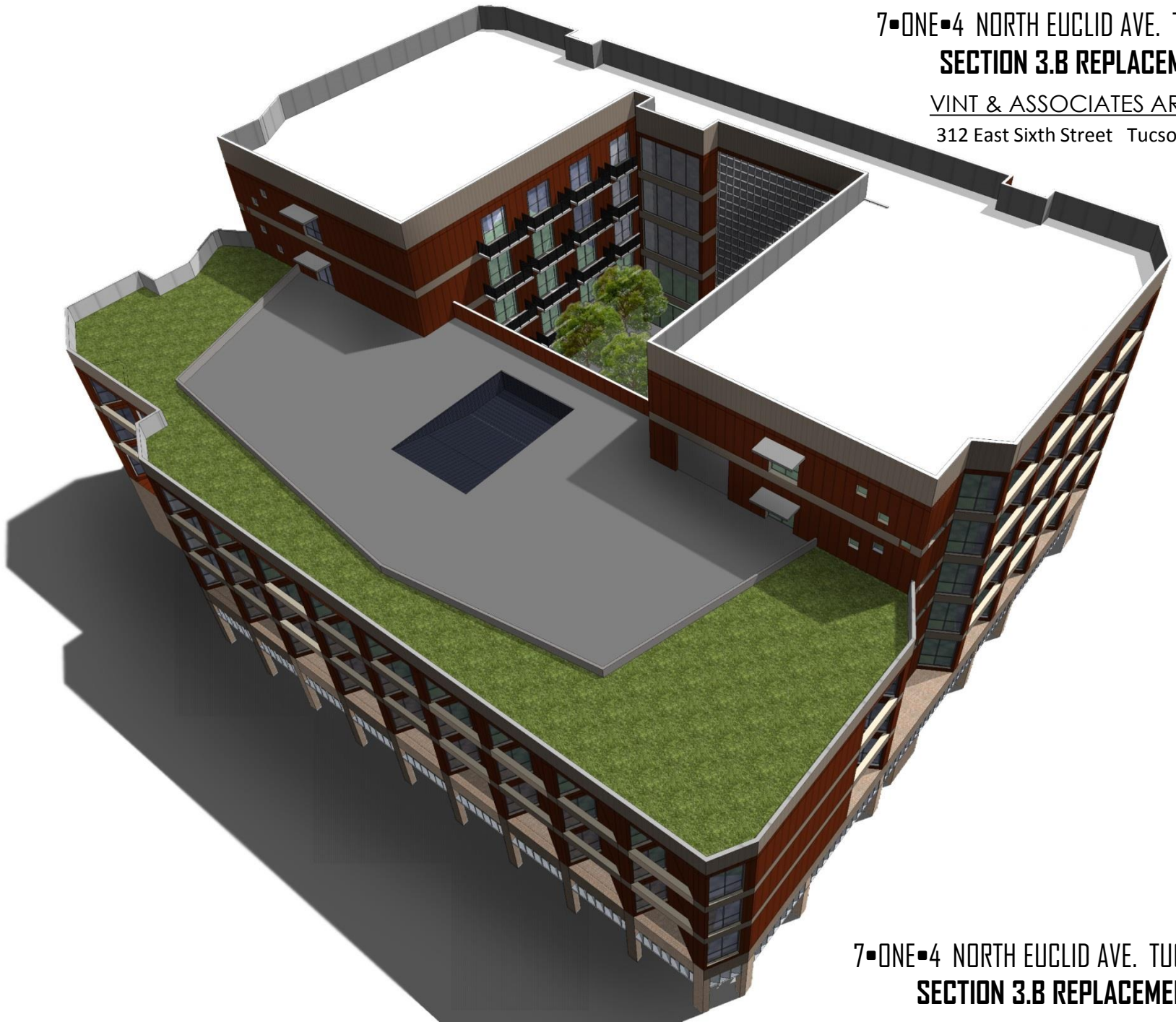
VINT & ASSOCIATES ARCHITECTS

312 East Sixth Street Tucson, AZ 85705



7•ONE•4 NORTH EUCLID AVE. TUCSON, AZ
SECTION 3.B REPLACEMENT PLAN

VINT & ASSOCIATES ARCHITECTS
312 East Sixth Street Tucson, AZ 85705



7•ONE•4 NORTH EUCLID AVE. TUCSON, AZ
SECTION 3.B REPLACEMENT PLAN

7•ONE•4 NORTH EUCLID AVE. TUCSON, AZ
SECTION 3.B REPLACEMENT PLAN

VINT & ASSOCIATES ARCHITECTS
312 East Sixth Street Tucson, AZ 85705

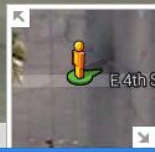




SITE – EUCLID AVE. @ 4th ST.

© 2013 Google Image Date: March 2011

Report a problem





ORIGINAL DESIGN – EUCLID AVE. ELEVATION