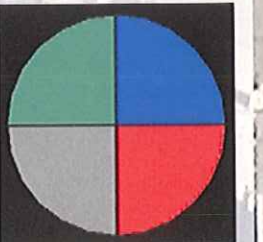
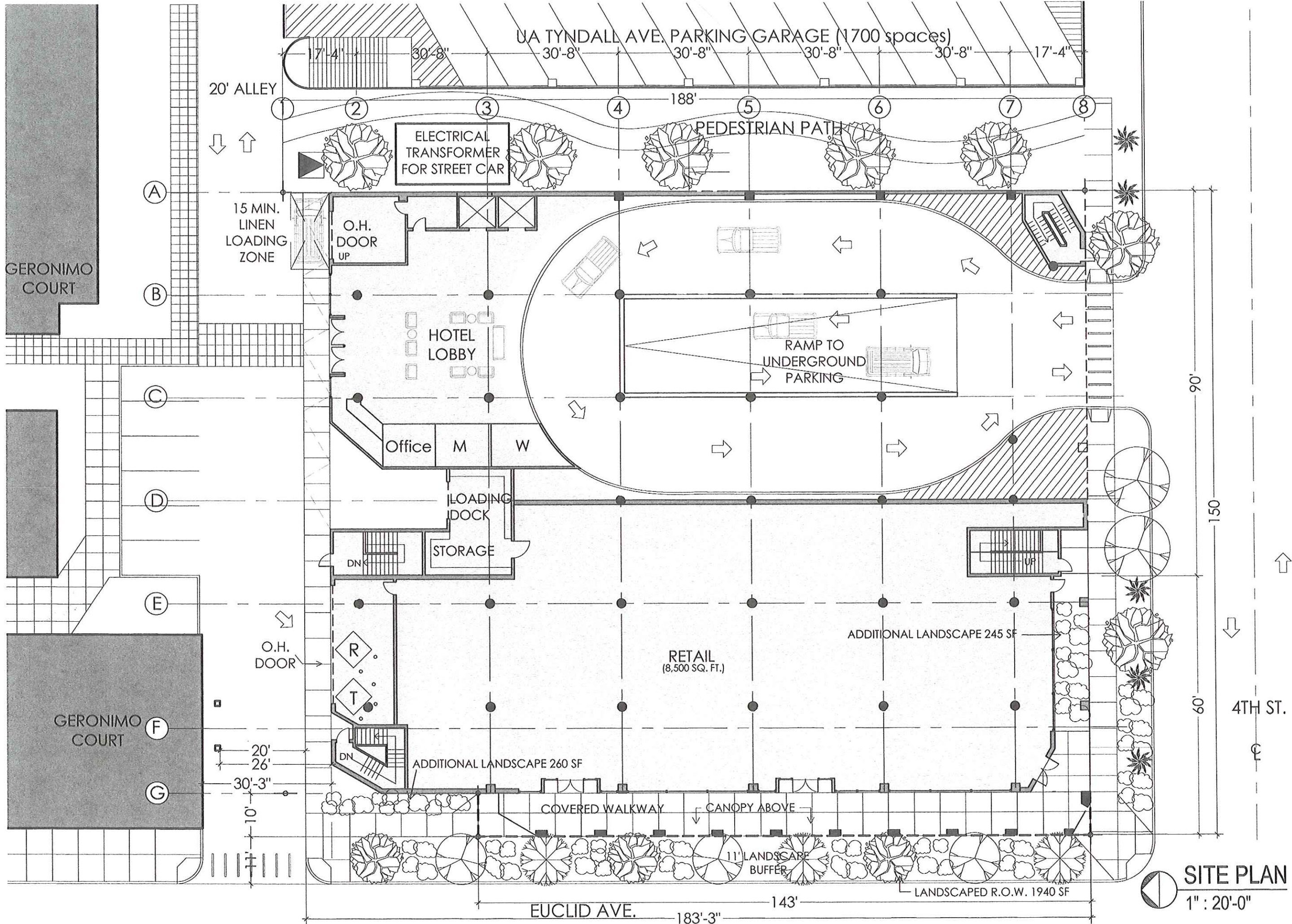




HOTEL EUCLID
714 N. EUCLID AVENUE
TUCSON, ARIZONA



VINT AND ASSOCIATES ARCHITECTS
312 EAST SIXTH STREET | 520.882.5232
bob@vintarchitects.net



UA TYNDALL AVE. PARKING GARAGE (1700 spaces)

20' ALLEY

ELECTRICAL TRANSFORMER FOR STREET CAR

PEDESTRIAN PATH

15 MIN. LINEN LOADING ZONE

O.H. DOOR UP

HOTEL LOBBY

RAMP TO UNDERGROUND PARKING

Office M W

LOADING DOCK

STORAGE

O.H. DOOR

RETAIL (8,500 SQ. FT.)

ADDITIONAL LANDSCAPE 245 SF

ADDITIONAL LANDSCAPE 260 SF

COVERED WALKWAY

CANOPY ABOVE

11' LANDSCAPE BUFFER

LANDSCAPED R.O.W. 1940 SF

EUCLID AVE.

SITE PLAN
1" : 20'-0"

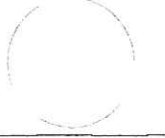
13.12 - 7-one•4 HOTEL - 714 N. EUCLID AVE, AZ 85719 - SECTION 3B - REPLACEMENT PLAN

VINT & ASSOCIATES ARCHITECTS

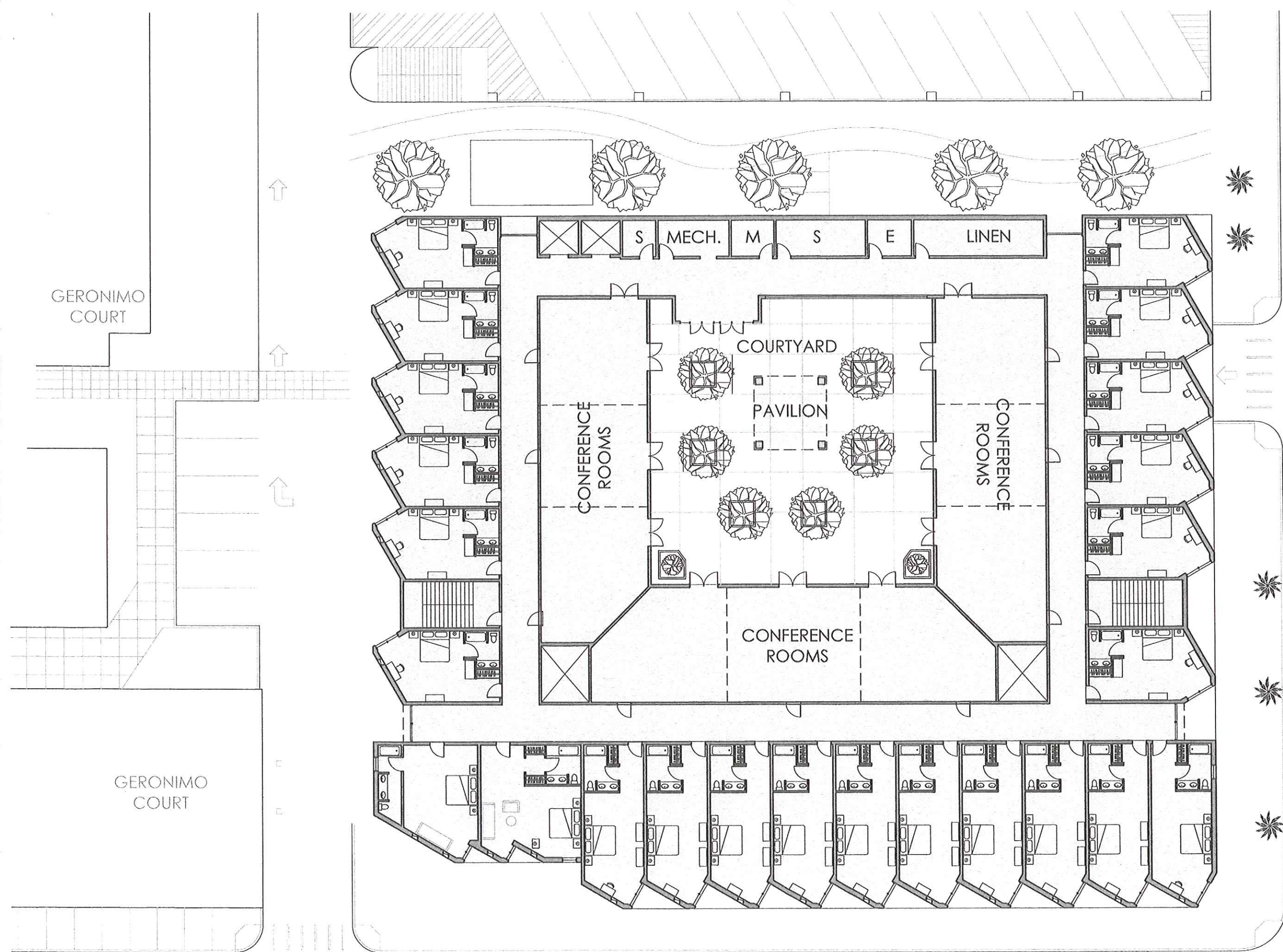
312 E. 6th St. Tucson AZ 85705 P.O. Box 648 Tucson, AZ 85702 P. (520) 882-5252 F. (520) 882-5449

Date: 9/04/14
Scale: as noted
Drawn by: MGO/MB

Revisions:
By: _____ Date: _____



SITE PLAN



GERONIMO COURT

GERONIMO COURT

CONFERENCE ROOMS

COURTYARD

PAVILION

CONFERENCE ROOMS

CONFERENCE ROOMS

S MECH. M S E LINEN

2ND FLOOR PLAN
1" : 20'-0"

13.12 - 7 one 4 HOTEL - 714 N. EUCLID AVE, AZ 85719 - SECTION 3B - REPLACEMENT PLAN

VINT & ASSOCIATES ARCHITECTS

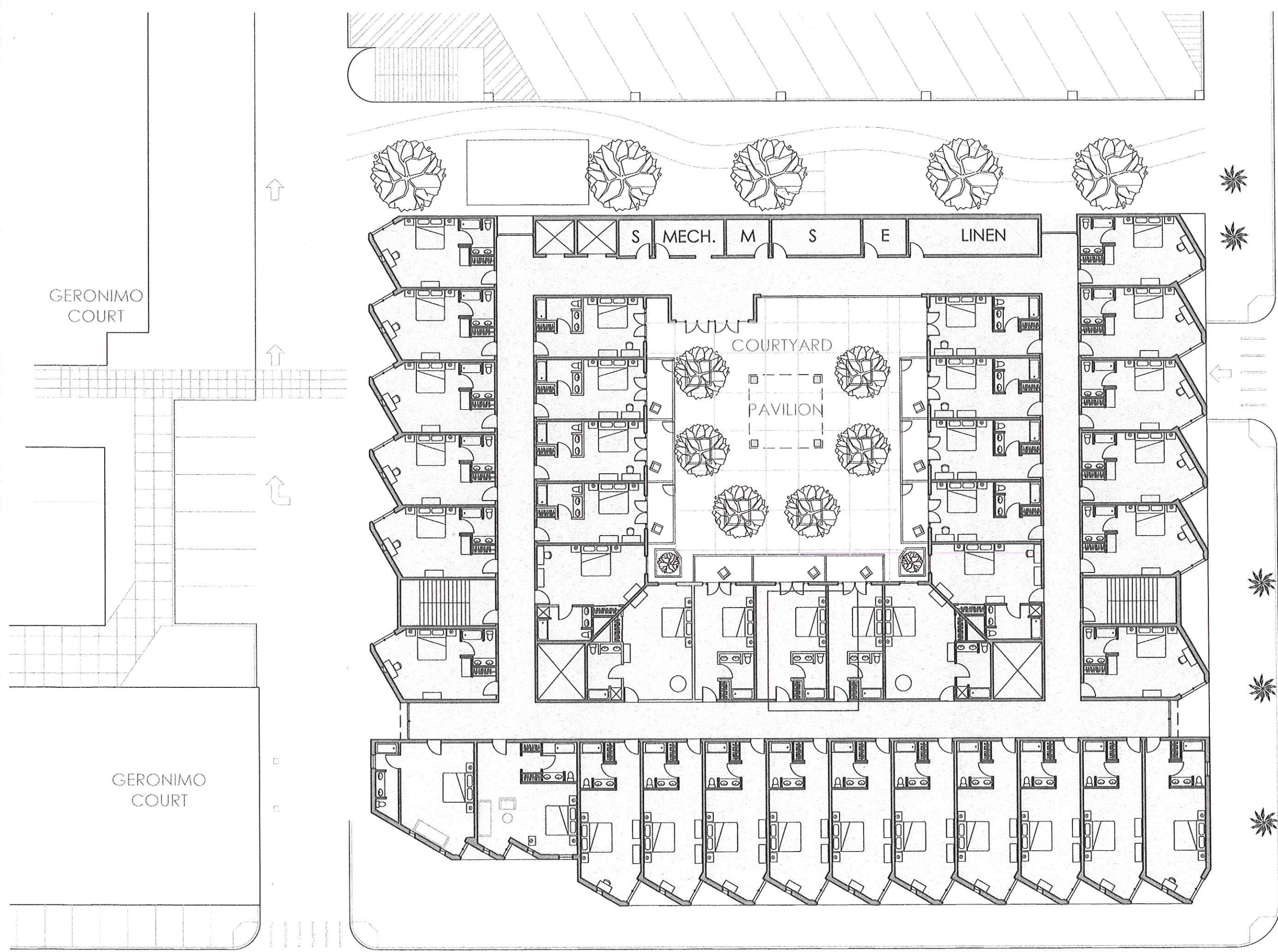
312 E. 6th St. Tucson AZ 85705 P.O. Box 648 Tucson, AZ 85702 P. (520) 882-5252 F. (520) 882-5449

Date 9/04/14
Scale as noted
Drawn by MG, OMR

Revisions:
By Date

2ND FLOOR PLAN





3RD FLOOR PLAN (4TH FLOOR SIMILAR)
1" : 20'-0"

13.12 - 7 one•4 HOTEL - 714 N. EUCLID AVE, AZ 85719 - SECTION 3B - REPLACEMENT PLAN

VINT & ASSOCIATES ARCHITECTS
312 E. 6th St. Tucson AZ 85705 P.O. Box 648 Tucson, AZ 85702 P. (520) 882-5252 F. (520) 882-5449

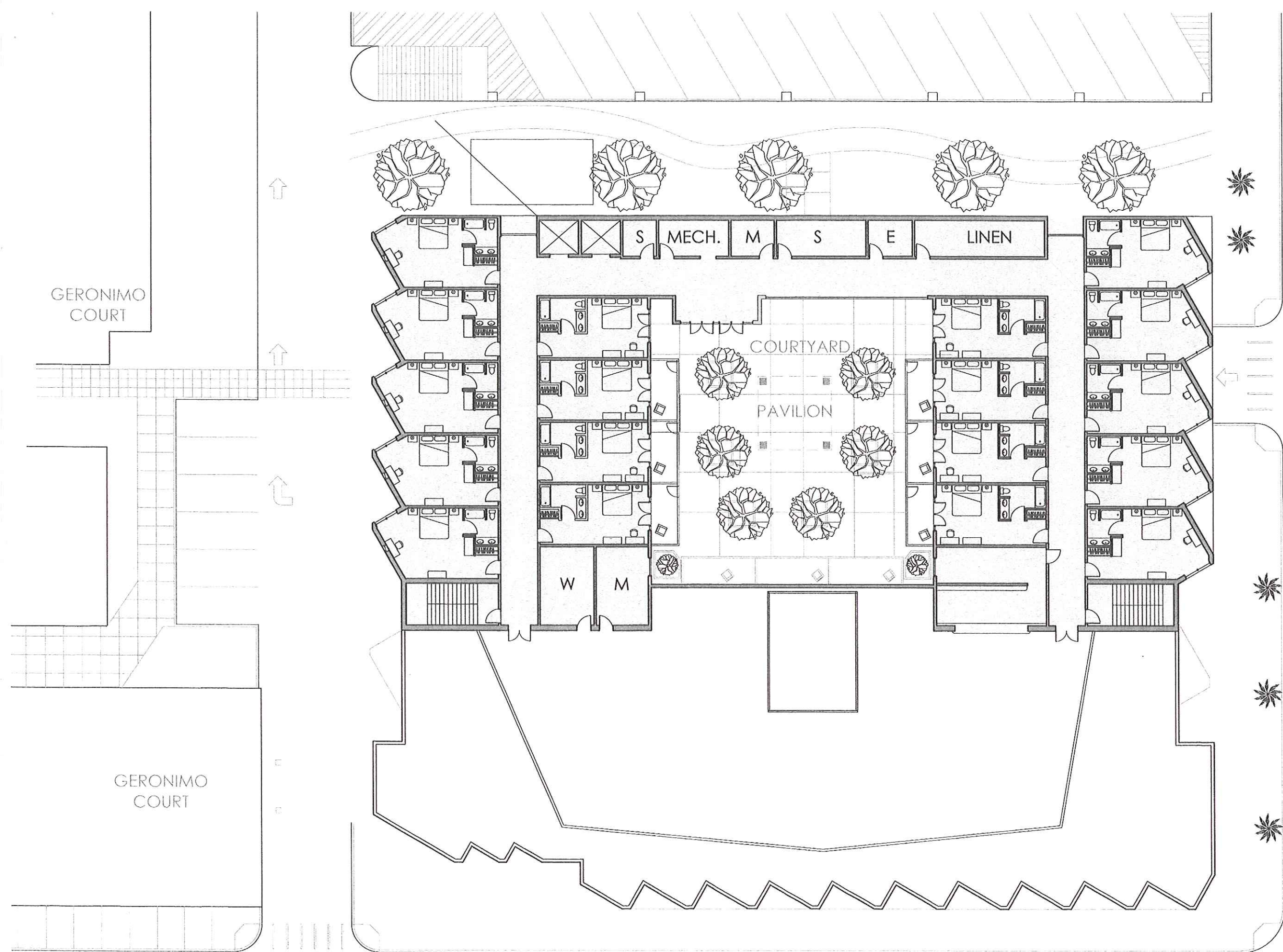
Date 9.04.14
Scale as noted
Drawn by M.G.OMR


Revisions:

By	Date

3RD FLOOR PLAN






FIFTH FLOOR PLAN (6TH FLOOR SIMILAR)
 1" : 20'-0"

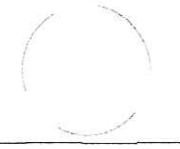
13.12 - 7•one•4 HOTEL - 714 N. EUCLID AVE, AZ 85719 - SECTION 3B - REPLACEMENT PLAN

VINT & ASSOCIATES ARCHITECTS

312 E. 6th St. Tucson AZ 85705 P.O. Box 648 Tucson, AZ 85702 P. (520) 882-5252 F. (520) 882-5449

Date _____
 Scale as noted
 Drawn by M.G. OMB

Revisions:
 By _____ Date _____



5TH FLOOR PLAN





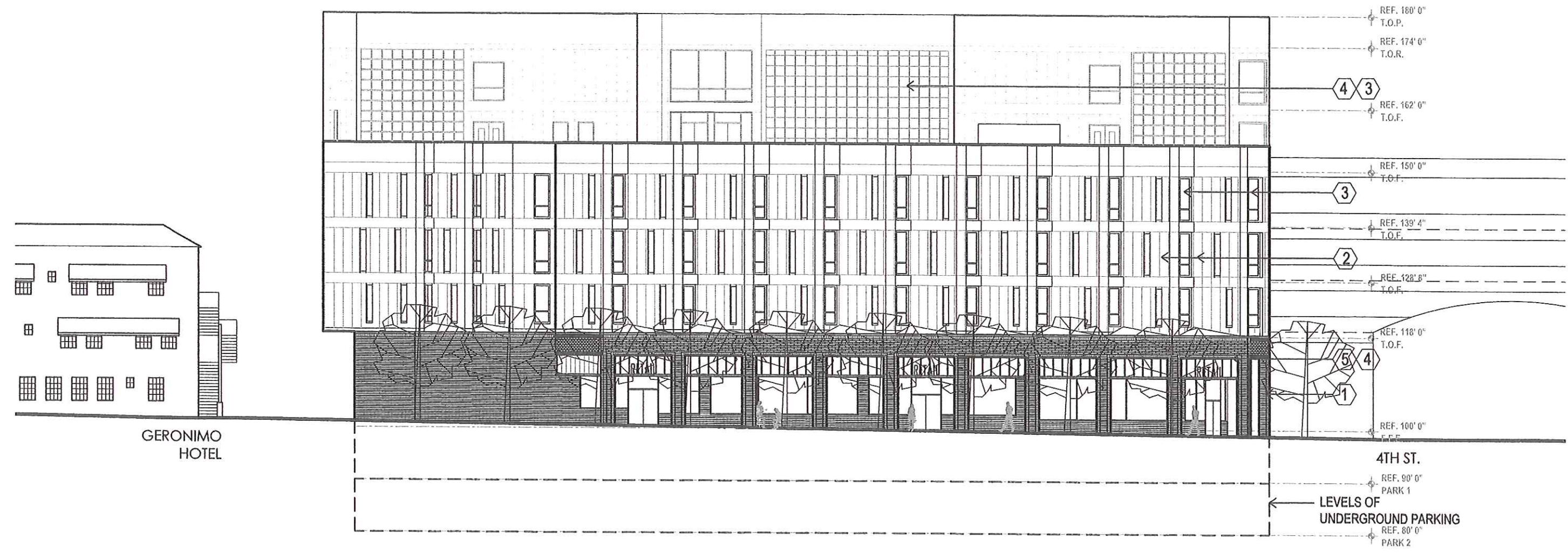
13.12 - 7 one 4 HOTEL - 714 N. EUCLID AVE, AZ 85719 - SECTION 3B - REPLACEMENT PLAN

VINT & ASSOCIATES ARCHITECTS

512 E. 6th St. Tucson AZ 85705 P.O. Box 648 Tucson, AZ 85702 P. (520) 882-5252 F. (520) 882-5449

KEY NOTES

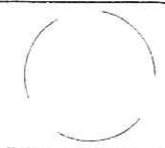
- ① FACE BRICK ON CONCRETE FRAME
- ② PRE-FIN. INSULATING METAL PANEL ON STEEL FRAMING
- ③ INSULATING GLASS
- ④ PRE-FIN. METAL SUNSCREEN/LOUVER
- ⑤ COMPATIBLE SIGNANGE SYSTEM



① WEST ELEVATION
1" : 20'-0"

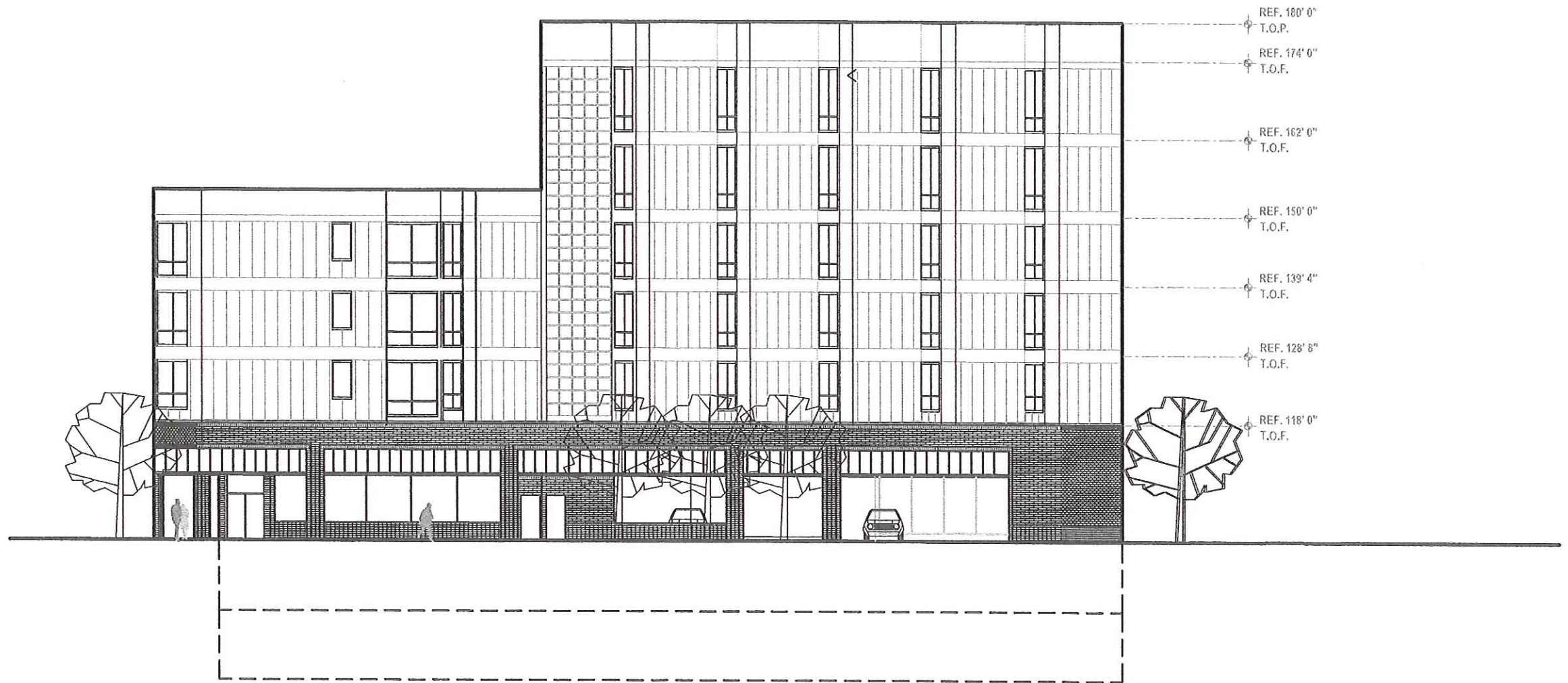
Date: 9/04/14
Scale: as noted
Drawn by: MQ/OMB

Revisions:
By: _____ Date: _____



ELEVATIONS

A.4



① SOUTH ELEVATION
1" : 20'-0"

13.12 - 7•one•4 HOTEL - 714 N. EUCLID AVE, AZ 85719 - SECTION 3B - REPLACEMENT PLAN

VINT & ASSOCIATES ARCHITECTS

312 E. 6th St. Tucson AZ 85705 P.O. Box 648 Tucson, AZ 85702 P. (520) 882-5252 F. (520) 882-5449

Date: 9/04/14
Scale: as noted
Drawn by: MQ/OMB

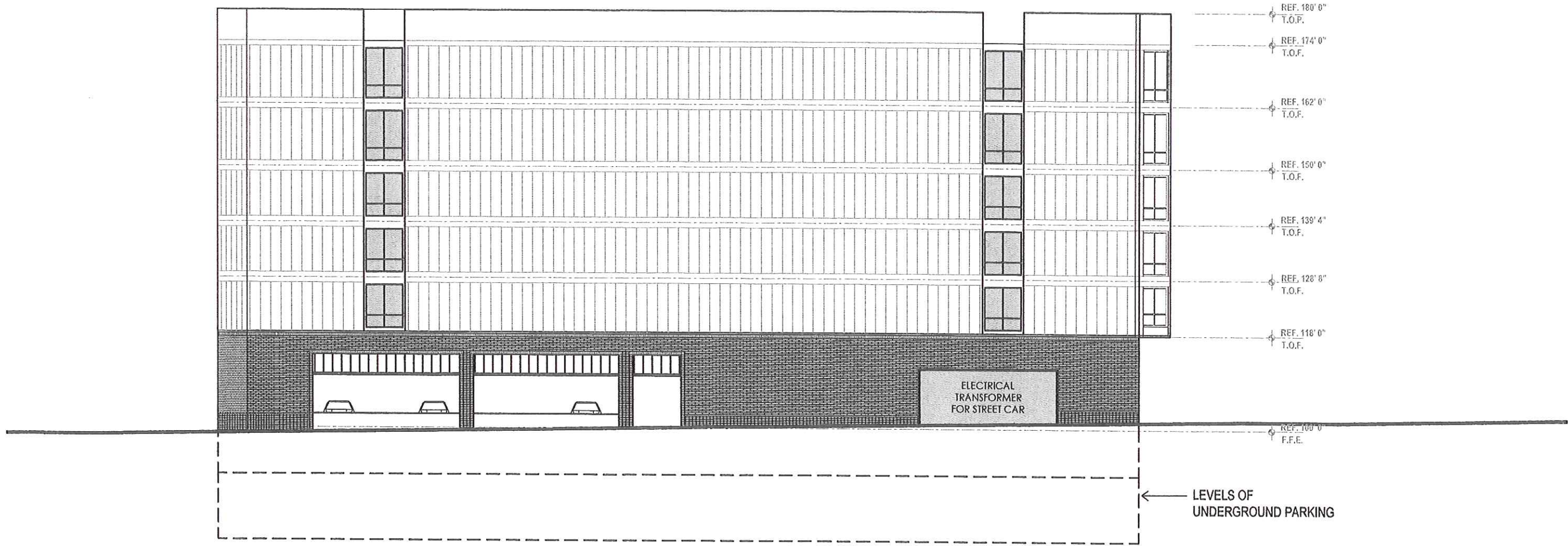
Revisions:
By: _____ Date: _____



ELEVATIONS

A.4





1 EAST ELEVATION
1" : 20'-0"

13.12 - 7-one-4 HOTEL - 714 N. EUCLID AVE, AZ 85719 - SECTION 3B - REPLACEMENT PLAN

VINT & ASSOCIATES ARCHITECTS

312 E. 6th St. Tucson AZ 85705 P.O. Box 648 Tucson, AZ 85702 P. (520) 882-5252 F. (520) 882-5449

Date: 9/04/14
Scale: as noted
Drawn by: MG/OMB

Revisions:
By: _____ Date: _____



ELEVATIONS





1 NORTH ELEVATION
1" : 20'-0"



Date: 9/04/14
Scale: as noted
Drawn by: MQ/OMR

Revisions:
By: _____ Date: _____

