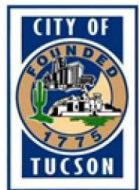


Revised Submission



Proposed Student Housing at Tyndall Avenue

The Hub at Tucson II

Feedback from May DRC Submission

- **The west façade area with the lighter stucco needs to be modified to offer more architectural relief/color to the stucco walls**
- **The architectural element along the Tyndall frontage between the Phase I and the townhouses near the garage door that is proposed to be stuccoed needs to be refined with a more durable material and better transition from Phase I to Phase II along the Tyndall frontage**





The Hub at Tucson II

Core Campus Developers | Antunovich Associates Architecture - Planning - Interiors

Proposed East Elevation 26

Tucson, Arizona | May 27th, 2014



The Hub at Tucson II

Core Campus Developers | Antunovich Associates Architecture - Planning - Interiors

Proposed East Elevation 3

Tucson, Arizona | July 8th, 2014



The Hub at Tucson II

Proposed East Elevation



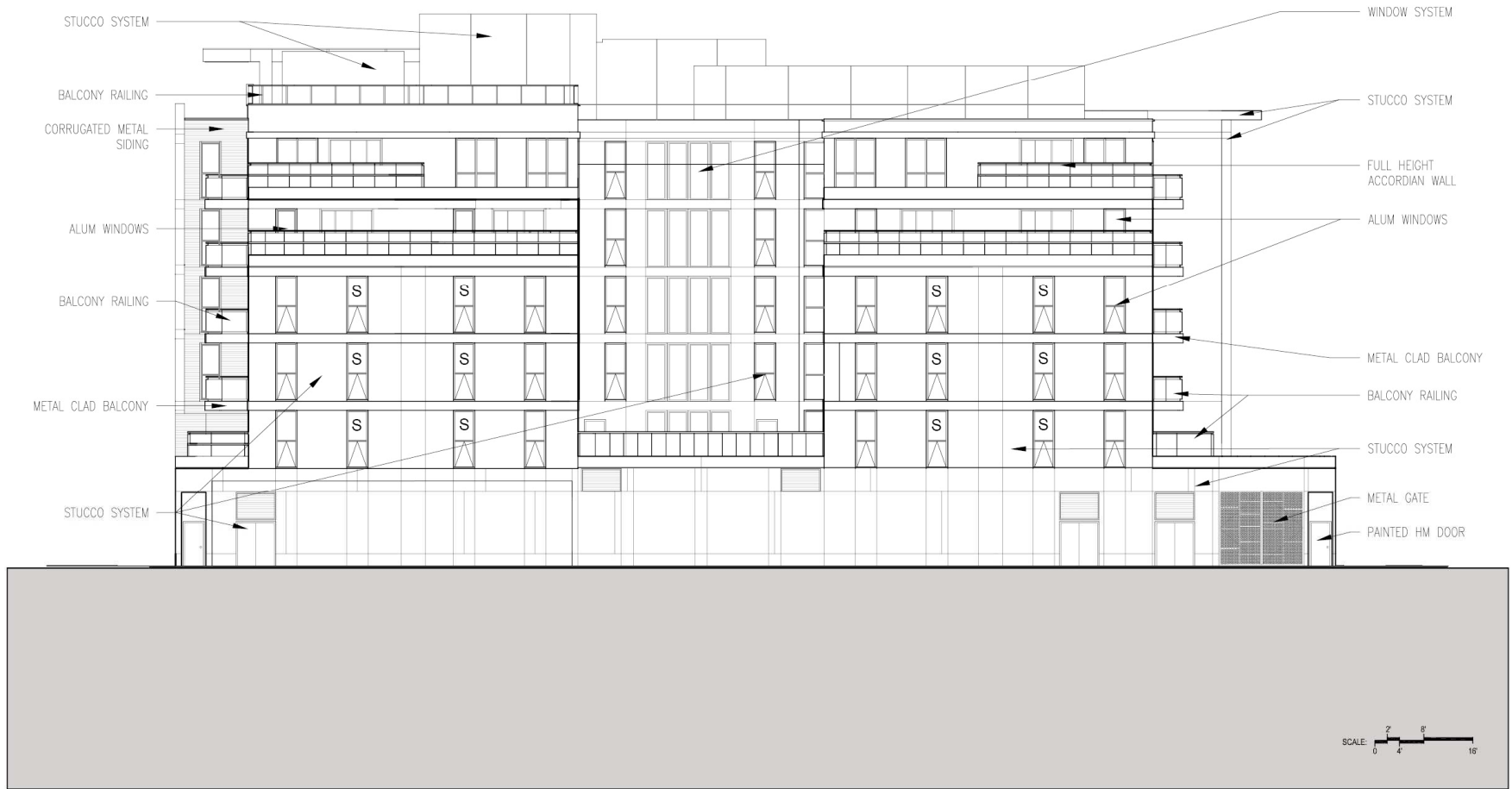
The Hub at Tucson II

Core Campus Developers | Antunovich Associates Architecture · Planning · Interiors

Proposed West Elevation

5

Tucson, Arizona | July 8th, 2014



The Hub at Tucson II

Core Campus Developers | Antunovich Associates Architecture · Planning · Interiors

Proposed West Elevation

Tucson, Arizona | July 8th, 2014



The Hub at Tucson II

Core Campus Developers | Antunovich Associates Architecture - Planning - Interiors

Proposed West Elevation OPTION 1

7

Tucson, Arizona | July 8th, 2014



The Hub at Tucson II

Proposed West Elevation Option 1

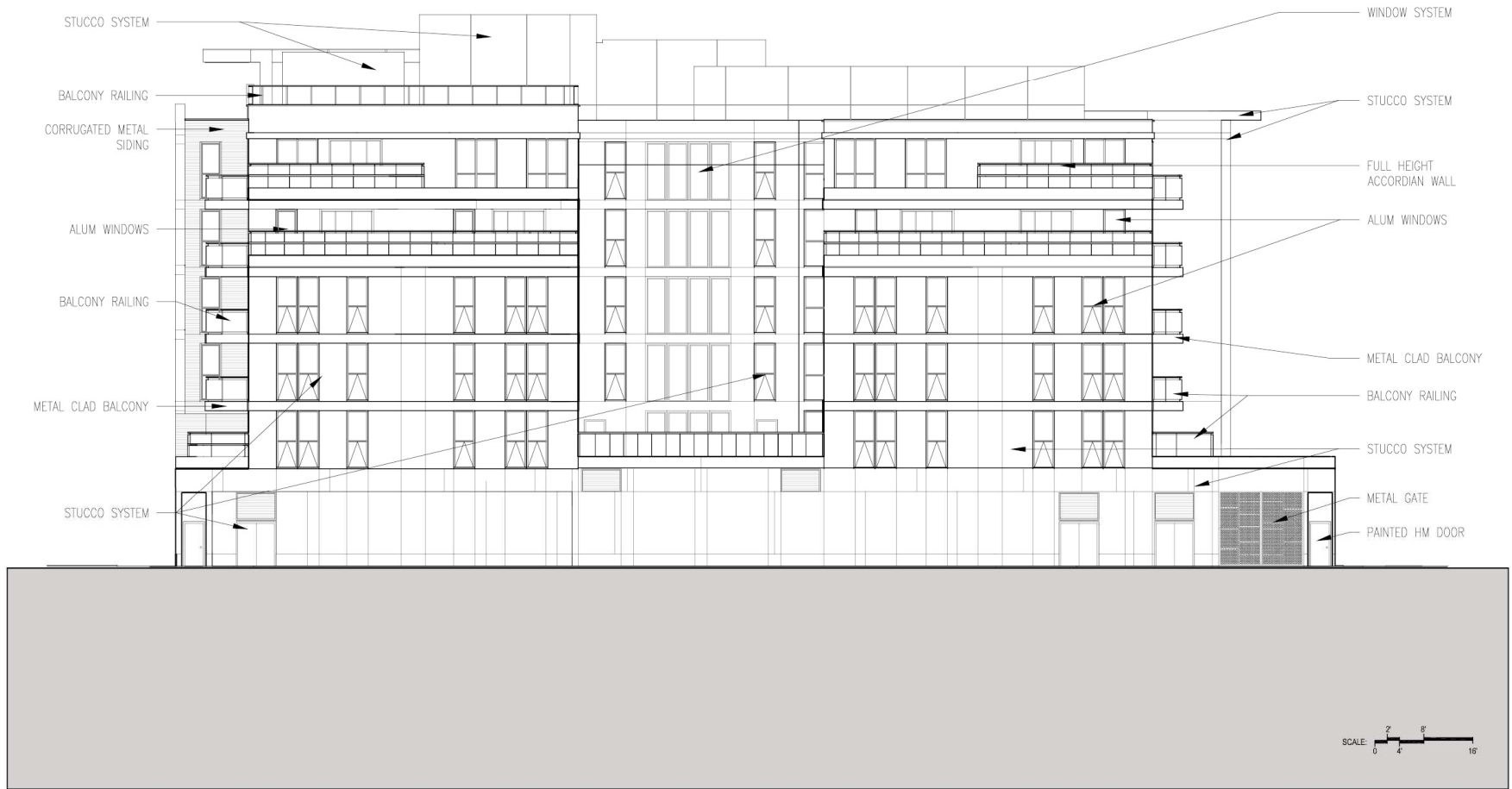


The Hub at Tucson II

Core Campus Developers | Antunovich Associates Architecture · Planning · Interiors

Proposed West Elevation OPTION 2

Tucson, Arizona | July 8th, 2014



The Hub at Tucson II

Core Campus Developers | Antunovich Associates Architecture · Planning · Interiors

Proposed West Elevation Option 2

Tucson, Arizona | July 8th, 2014