



Aspire 2 - Design Change Legend

- A. Window Type Changes
- B. Window Location Adjustments
- C. Windows Removed
- D. Windows Added
- E. Red Band Location Adjusted
- F. Added Mechanical Louvers
- G. Roof Core & Mechanical Spaces Updated
- H. Updated Screen & Gate Design
- I. Door Type Changed
- J. Rendering Adjustment to Show Correct Frame Size
- K. Modified Area of Metal Cladding
- L. Wall Moved
- M. Courtyard Parapet Adjusted



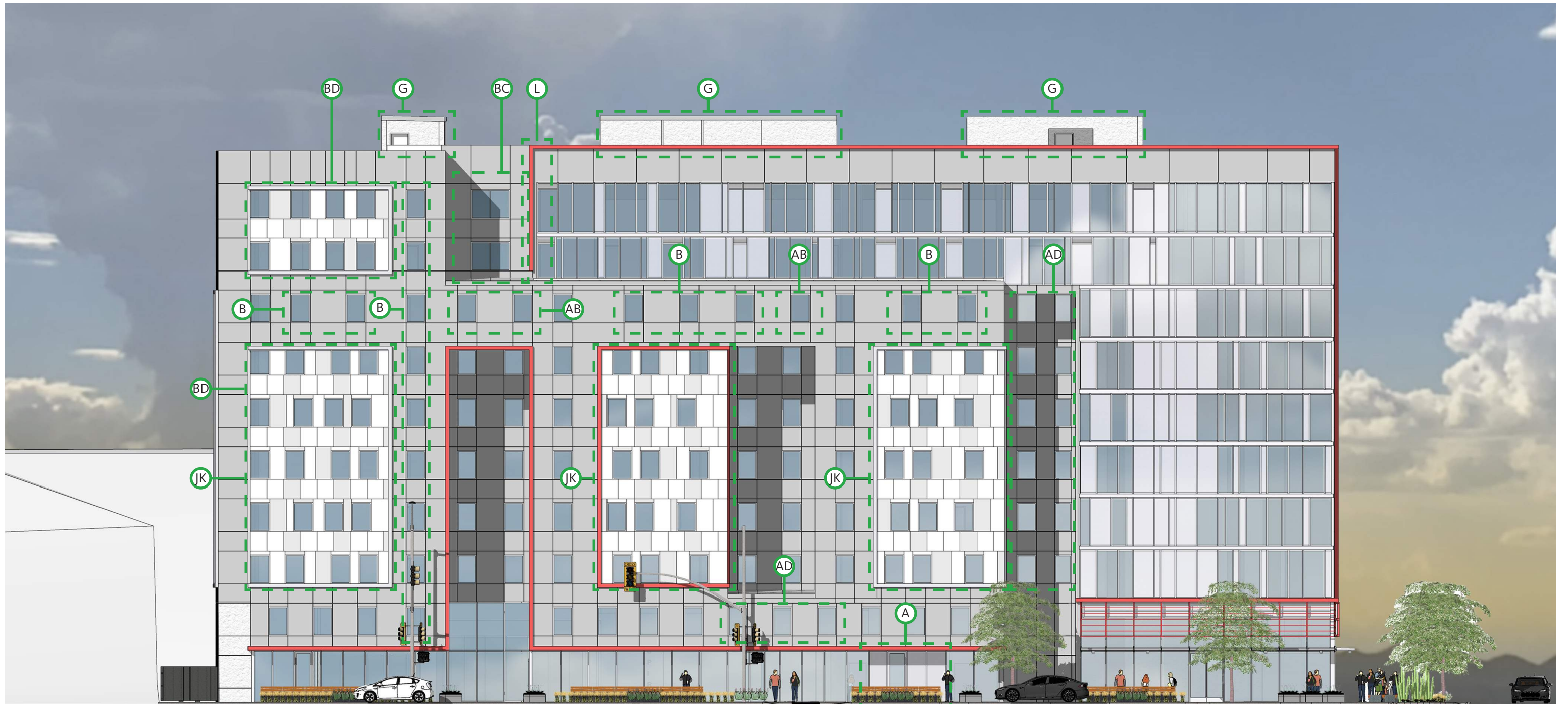
EXTERIOR MATERIAL LEGEND

- | | | |
|--|--|--|
| <ul style="list-style-type: none"> 1. Stucco facade control joints. 2. Stucco facade, dark grey color with textured finish. 3. Architectural Thermal Windows, with low E glass; Silver Finished Mullion. 4. Stucco frame, white elastomeric paint finish. 5. Metal panel cladding. Same configuration as #6 - #8. 6. White metal panel cladding. Matte finish. | <ul style="list-style-type: none"> 7. Light grey metal panel cladding. Matte finish. 8. Dark grey metal panel cladding. Matte finish. 9. Stucco facade, white color with textured finish. 10. Stucco screening wall/ parapet/ noise barrier. 11. Rooftop mechanical units screened by #10. 12. Stucco frame, red elastomeric paint finish. | <ul style="list-style-type: none"> 13. Full height architectural window wall system; Aluminum with low E glass. 14. Window wall cap. Silver Finished Mullion. 15. Metal frame structure with metal slat shading. 16. Glass door with aluminum frame. 17. Clear glass at pedestrian level. 18. Light grey spandrel. |
|--|--|--|



EXTERIOR MATERIAL LEGEND

- | | | |
|--|---|--|
| 1. Stucco facade control joints. | 7. Light grey metal panel cladding. Matte finish. | 13. Full height architectural window wall system; Aluminum with low E glass. |
| 2. Stucco facade, dark grey color with textured finish. | 8. Dark grey metal panel cladding. Matte finish. | 14. Window wall cap. Silver Finished Mullion. |
| 3. Architectural Thermal Windows, with low E glass; Silver Finished Mullion. | 9. Stucco facade, white color with textured finish. | 15. Red metal frame structure with metal slat shading. |
| 4. Stucco frame, white elastomeric paint finish. | 10. Stucco screening wall/ parapet/ noise barrier. | 16. Glass door with aluminum frame. |
| 5. Metal panel cladding. Same configuration as #6 - #8. | 11. Rooftop mechanical units screened by #10. | 17. Clear glass at pedestrian level. |
| 6. White metal panel cladding. Matte finish. | 12. Stucco frame, red elastomeric paint finish. | 18. Light grey spandrel. |



CHANGES

- A - WINDOW TYPE CHANGED
- B - WINDOW LOCATION ADJUSTED
- C - WINDOW REMOVED
- D - WINDOW ADDED
- E - RED BAND LOCATION ADJUSTED
- F - ADDED MECH LOUVERS

- G - ROOF CORE/MECH SPACE UPDATED
- H - UPDATED SCREEN/GATE DESIGN
- I - DOOR TYPE CHANGED
- J - RENDERING ADJUSTED TO SHOW CORRECT FRAME SIZE
- K - MODIFIED AREA OF METAL CLADDING
- L - WALL MOVED

- M - COURTYARD PARAPET ADJUSTED



Arizona History Museum



Aspire Tucson 2

Concept Design View - N Park Ave Mid-air - Approved

Tucson, Arizona | 12, Feb.

©2019 **Gensler**



Aspire Tucson 2



Concept Design View - N Park Ave Mid-air - Updated

Tucson, Arizona | 12, Feb.

©2019 **Gensler**



Arizona History Museum



Aspire Tucson 2

Concept Design View - N Park Ave Mid-air - Changes

Tucson, Arizona | 12, Feb.

©2019 **Gensler**



Aspire Tucson 2

Concept Design View - E 1st St & N Park Ave - Approved

Tucson, Arizona | 12, Feb.

©2020 **Gensler**



Aspire Tucson 2

Concept Design View - E 1st St & N Park Ave - Updated

Tucson, Arizona | 12, Feb.

©2020 **Gensler**



Aspire Tucson 2

Concept Design View - E 1st St & N Park Ave - Changes

Tucson, Arizona | 12, Feb.

©2020 **Gensler**









EXTERIOR MATERIAL LEGEND

- | | | |
|--|---|--|
| 1. Stucco facade, dark grey color with textured finish. | 6. Light grey metal panel cladding. Matte finish. | 11. Metal panel cladding. Same configuration as #5 - #7. |
| 2. Architectural Thermal Windows, with low E glass; Silver Finished Mullion. | 7. Dark grey metal panel cladding. Matte finish. | |
| 3. Stucco facade control joints. | 8. Stucco facade, white color with textured finish. | |
| 4. Stucco frame, white elastomeric paint finish. | 9. Stucco screening wall/ parapet/ noise barrier. | |
| 5. White metal panel cladding. Matte finish. | 10. Rooftop mechanical units screened by #9. | |



Mechanical Overrun
104'-10"
Level Parapet
99'-10"
Level Roof
94'-10"
Level 08M
85'-0"
Level 08
75'-4"
Level 07
65'-11"
Level 06
56'-6"
Level 05
47'-1"
Level 04
37'-8"
Level 03
28'-3"
Level 02
18'-10"
Level 01M
9'-5"
Level 01
0'-0"

EXTERIOR MATERIAL LEGEND

- | | | |
|--|---|--|
| 1. Stucco facade, dark grey color with textured finish. | 6. Light grey metal panel cladding. Matte finish. | 11. Metal panel cladding. Same configuration as #5 - #7. |
| 2. Architectural Thermal Windows, with low E glass; Silver Finished Mullion. | 7. Dark grey metal panel cladding. Matte finish. | |
| 3. Stucco facade control joints. | 8. Stucco facade, white color with textured finish. | |
| 4. Stucco frame, white elastomeric paint finish. | 9. Stucco screening wall/ parapet/ noise barrier. | |
| 5. White metal panel cladding. Matte finish. | 10. Rooftop mechanical units screened by #9. | |



CHANGES

- A - WINDOW TYPE CHANGED
- B - WINDOW LOCATION ADJUSTED
- C - WINDOW REMOVED
- D - WINDOW ADDED
- E - RED BAND LOCATION ADJUSTED
- F - ADDED MECH LOUVERS

- G - ROOF CORE/MECH SPACE UPDATED
- H - UPDATED SCREEN/GATE DESIGN
- I - DOOR TYPE CHANGED
- J - RENDERING ADJUSTED TO SHOW CORRECT FRAME SIZE
- K - MODIFIED AREA OF METAL CLADDING
- L - WALL MOVED

- M - COURTYARD PARAPET ADJUSTED



Aspire Tucson 2

Concept Design View - N Park Ave - Approved

Tucson, Arizona | 12, Feb.

©2019 **Gensler**





Arizona History Museum



Aspire Tucson 2

Concept Design View - N Park Ave - Changes

Tucson, Arizona | 12, Feb.

©2019 **Gensler**



Aspire Tucson 2

View 8 - E 2nd St & Park Ave - Approved

Tucson, Arizona | 12, Feb.

©2019 **Gensler**



Aspire Tucson 2

View 8 - E 2nd St & Park Ave - Updated

Tucson, Arizona | 12, Feb.

©2019 **Gensler**



Aspire Tucson 2

View 8 - E 2nd St & Park Ave - Changes

Tucson, Arizona | 12, Feb.

©2019 **Gensler**



EXTERIOR MATERIAL LEGEND

- | | | |
|--|--|--|
| 1. Stucco facade, dark grey color with textured finish. | 6. White metal panel cladding. Matte finish. | 12. Stucco frame, white elastomeric paint finish. |
| 2. Architectural Thermal Windows, with low E glass; Silver Finished Mullion. | 7. Light grey metal panel cladding. Matte finish. | 13. Metal panel cladding. Same configuration as #6 - #8. |
| 3. Stucco facade, white color with textured finish. | 8. Dark grey metal panel cladding. Matte finish. | 14. Drive thru exit with do not enter signage. |
| 4. Stucco facade control joints. | 9. Stucco facade, light grey color with textured finish. | 15. Decorative metal panel transformer gate. |
| 5. Stucco frame, red elastomeric paint finish. | 10. Stucco screening wall/ parapet/ noise barrier. | |
| | 11. Rooftop mechanical units screened by #10. | |



EXTERIOR MATERIAL LEGEND

- | | | |
|--|---|--|
| 1. Stucco facade, dark grey color with textured finish. | 6. White metal panel cladding. Matte finish. | 12. Metal panel cladding. Same configuration as #6 - #8. |
| 2. Architectural Thermal Windows, with low E glass; Silver Finished Mullion. | 7. Light grey metal panel cladding. Matte finish. | 13. Drive thru exit with do not enter signage. |
| 3. Stucco facade, white color with textured finish. | 8. Dark grey metal panel cladding. Matte finish. | 14. Decorative metal panel transformer gate. |
| 4. Stucco facade control joints. | 9. Stucco screening wall/ parapet/ noise barrier. | |
| 5. Stucco frame, red elastomeric paint finish. | 10. Rooftop mechanical units screened by #9. | |
| | 11. Stucco frame, white elastomeric paint finish. | |



CHANGES

- A - WINDOW TYPE CHANGED
- B - WINDOW LOCATION ADJUSTED
- C - WINDOW REMOVED
- D - WINDOW ADDED
- E - RED BAND LOCATION ADJUSTED
- F - ADDED MECH LOUVERS

- G - ROOF CORE/MECH SPACE UPDATED
- H - UPDATED SCREEN/GATE DESIGN
- I - DOOR TYPE CHANGED
- J - RENDERING ADJUSTED TO SHOW CORRECT FRAME SIZE
- K - MODIFIED AREA OF METAL CLADDING
- L - WALL MOVED

- M - COURTYARD PARAPET ADJUSTED

AB D A H



Aspire Tucson 2

Concept Design View - N Park Ave & E 1st St - Approved

Tucson, Arizona | 12, Feb.

©2019 **Gensler**



Aspire Tucson 2

Concept Design View - N Park Ave & E 1st St - Updated

Tucson, Arizona | 12, Feb.

©2019 **Gensler**

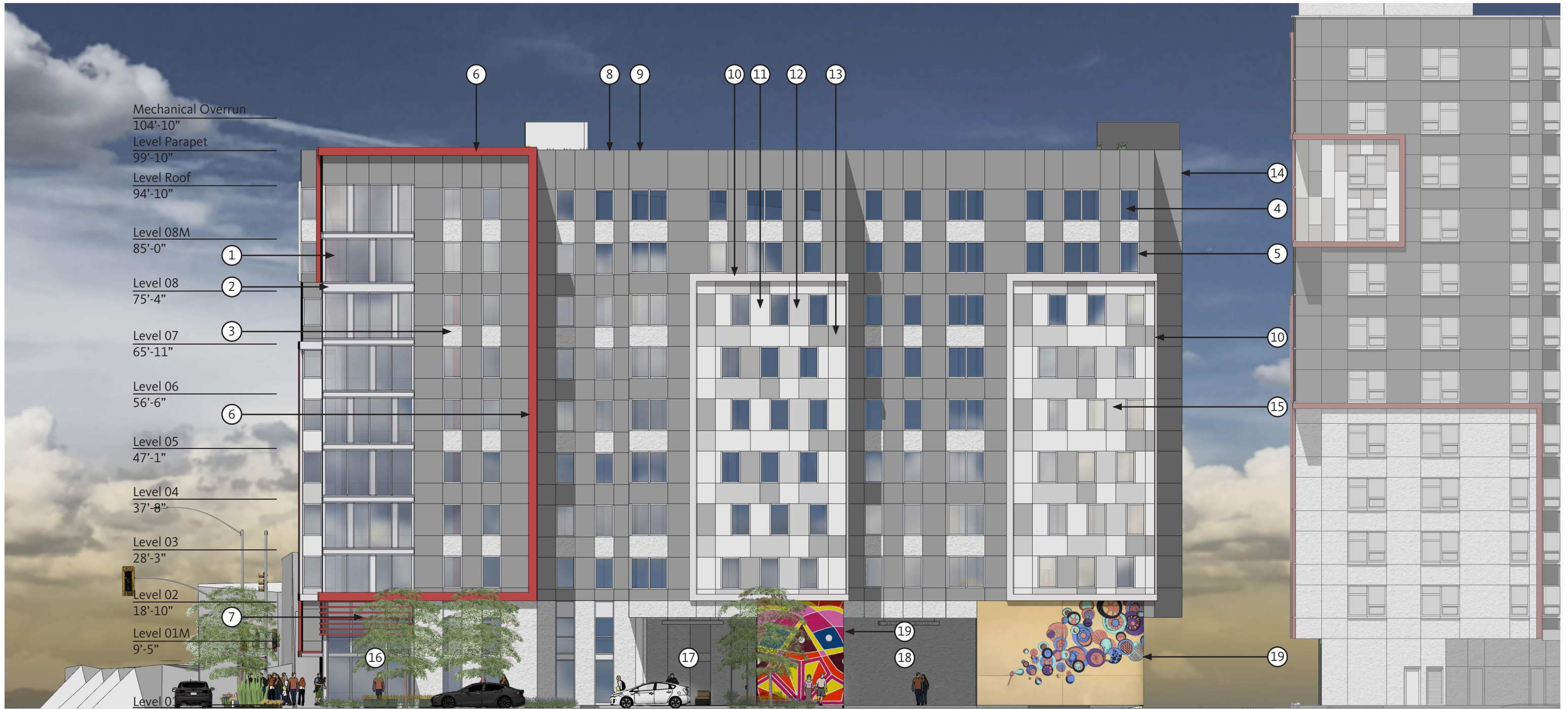


Aspire Tucson 2

Concept Design View - N Park Ave & E 1st St - Changes

Tucson, Arizona | 12, Feb.

©2019 **Gensler**



EXTERIOR MATERIAL LEGEND

- 1. Full height architectural window wall system; Aluminum with low E glass.
- 2. Window wall cap. Silver Finish Mullion.
- 3. Stucco facade, white color with textured finish.
- 4. Architectural Thermal Windows, with low E glass; Silver Finished Mullion.
- 5. Stucco facade control joints.

- 6. Stucco frame, red elastomeric finish.
- 7. Metal frame structure with metal slat shading.
- 8. Stucco screening wall/ parapet/ noise barrier.
- 9. Rooftop mechanical units screened by #9.
- 10. Stucco frame, white elastomeric paint finish.
- 11. White metal panel cladding. Matte finish.
- 12. Light grey metal panel cladding. Matte finish.

- 13. Dark grey metal panel cladding. Matte finish.
- 14. Stucco facade, dark grey color with textured finish.
- 15. Metal panel cladding. Same configuration as #12 - #14.
- 16. Clear glass at pedestrian level.
- 17. Drive thru entry with signage above.
- 18. Parking garage entry with signage above.
- 19. Painted mural, design TBD.



EXTERIOR MATERIAL LEGEND

- 1. Full height architectural window wall system; Aluminum with low E glass.
- 2. Window wall cap. Silver Finish Mullion.
- 3. Stucco facade, white color with textured finish.
- 4. Architectural Thermal Windows, with low E glass; Silver Finished Mullion.
- 5. Stucco facade control joints.

- 6. Stucco frame, red elastomeric finish.
- 7. Metal frame structure with metal slat shading.
- 8. Stucco screening wall/ parapet/ noise barrier.
- 9. Rooftop mechanical units screened by #9.
- 10. Stucco frame, white elastomeric paint finish.
- 11. White metal panel cladding. Matte finish.
- 12. Light grey metal panel cladding. Matte finish.

- 13. Dark grey metal panel cladding. Matte finish.
- 14. Stucco facade, dark grey color with textured finish.
- 15. Metal panel cladding. Same configuration as #11 - #13.
- 16. Clear glass at pedestrian level.
- 17. Drive thru entry with signage above.
- 18. Parking garage entry with signage above.
- 19. Painted mural, design TBD.



CHANGES

- A - WINDOW TYPE CHANGED
- B - WINDOW LOCATION ADJUSTED
- C - WINDOW REMOVED
- D - WINDOW ADDED
- E - RED BAND LOCATION ADJUSTED
- F - ADDED MECH LOUVERS

- G - ROOF CORE/MECH SPACE UPDATED
- H - UPDATED SCREEN/GATE DESIGN
- I - DOOR TYPE CHANGED
- J - RENDERING ADJUSTED TO SHOW CORRECT FRAME SIZE
- K - MODIFIED AREA OF METAL CLADDING
- L - WALL MOVED

- M - COURTYARD PARAPET ADJUSTED



Aspire Tucson 2

Concept Design View - E 1st St & N Park Ave - Approved

Tucson, Arizona | 12, Feb.

©2020 **Gensler**



Aspire Tucson 2

Concept Design View - E 1st St & N Park Ave - Updated

Tucson, Arizona | 12, Feb.

©2020 **Gensler**

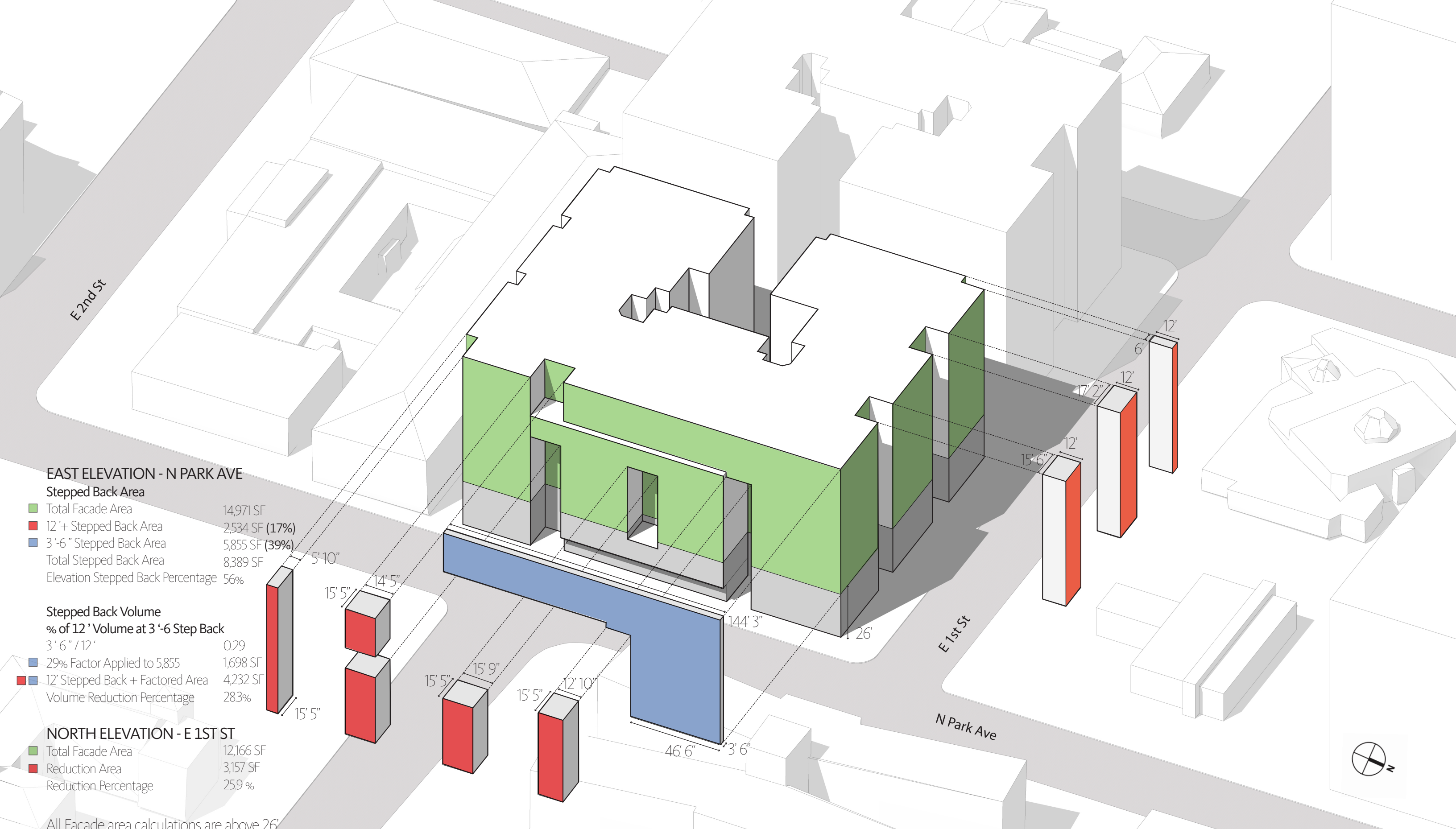


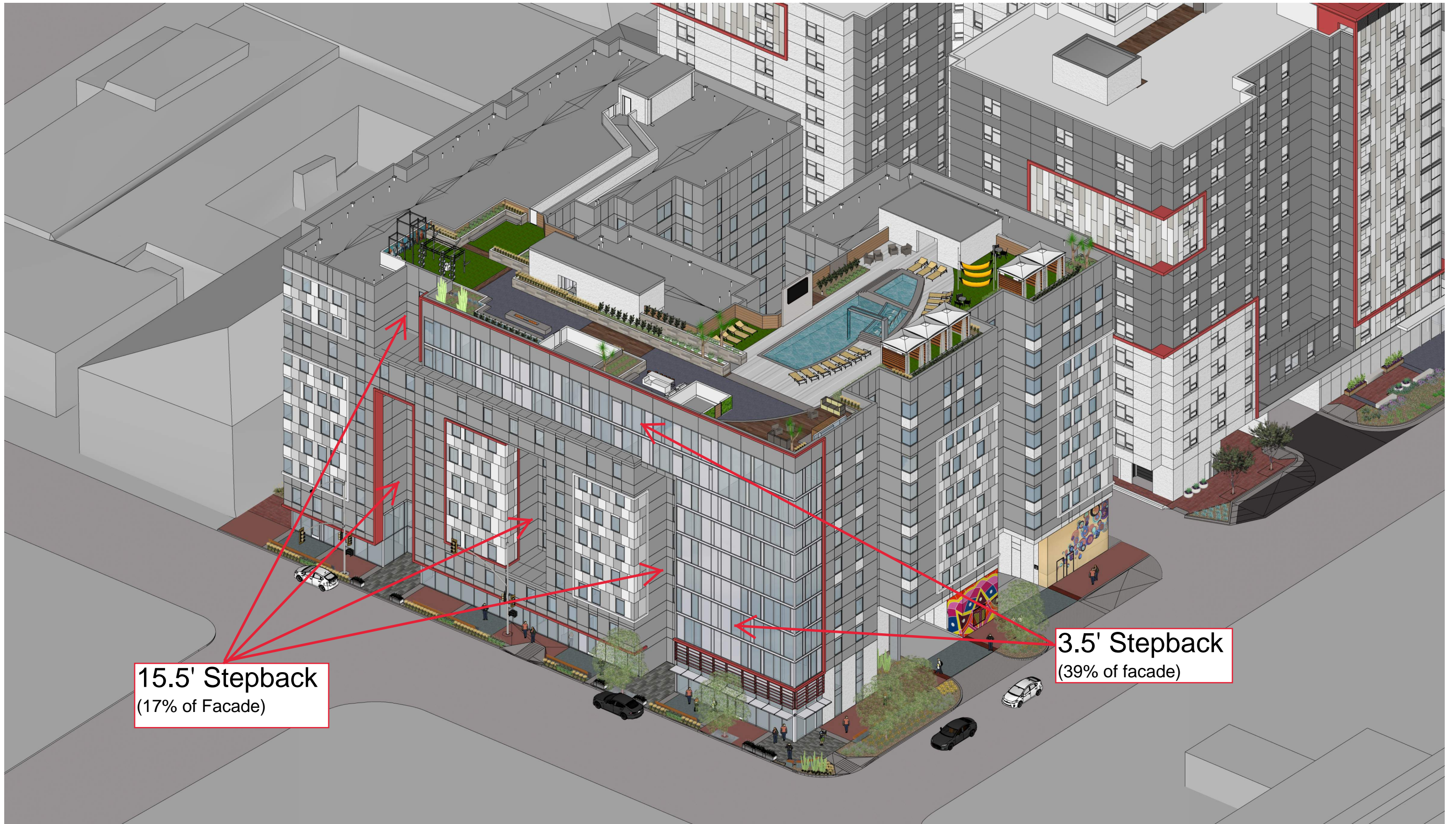
Aspire Tucson 2

Concept Design View - E 1st St & N Park Ave - Changes

Tucson, Arizona | 12, Feb.

©2020 **Gensler**





15.5' Stepback
(17% of Facade)

3.5' Stepback
(39% of facade)



Aspire Tucson 2

Concept Design View - E 1st St & N Park Ave

Tucson, Arizona | 12, Feb.

©2019 **Gensler**