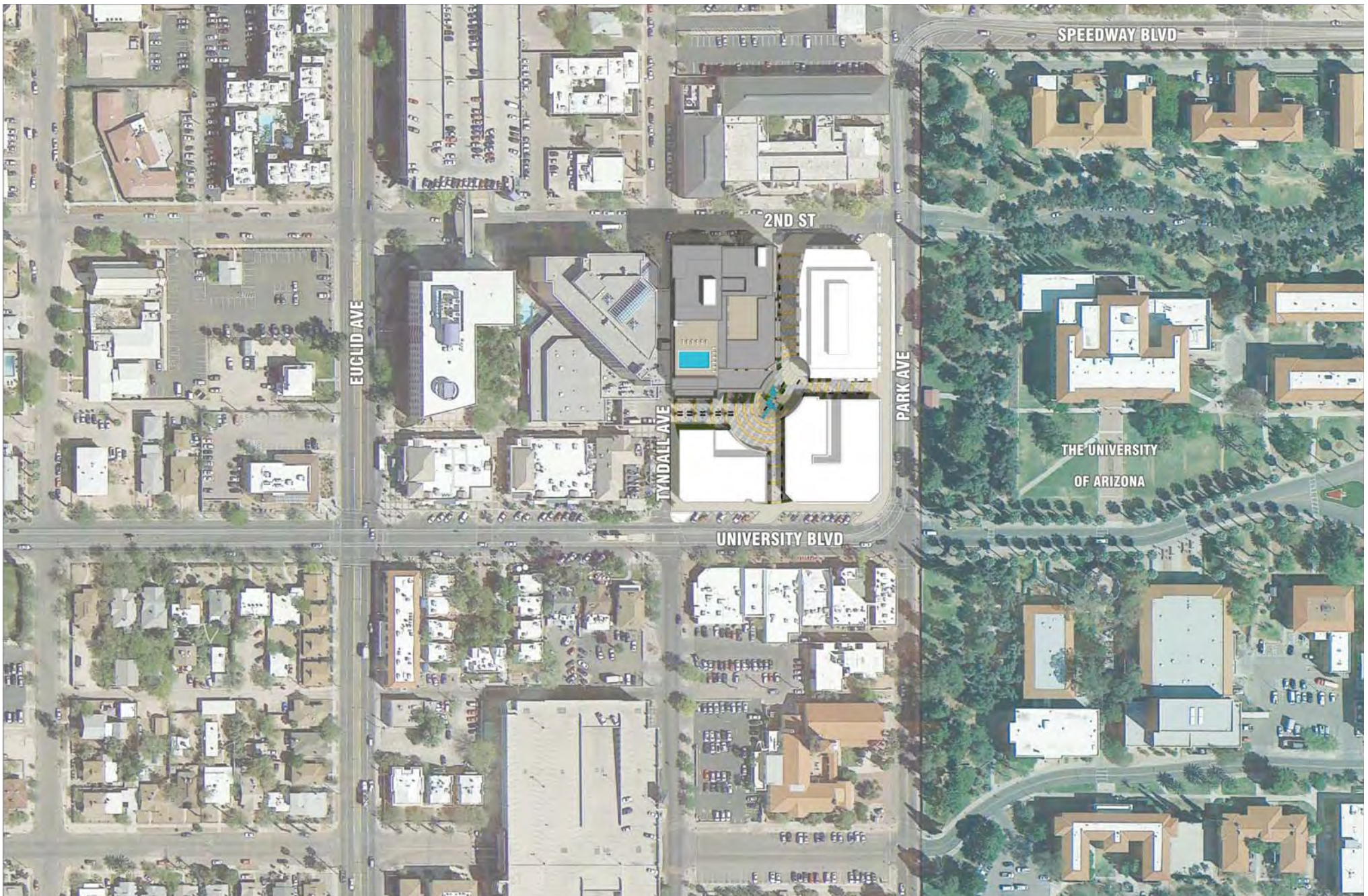


Context Aerial

SCALE: N.T.S.

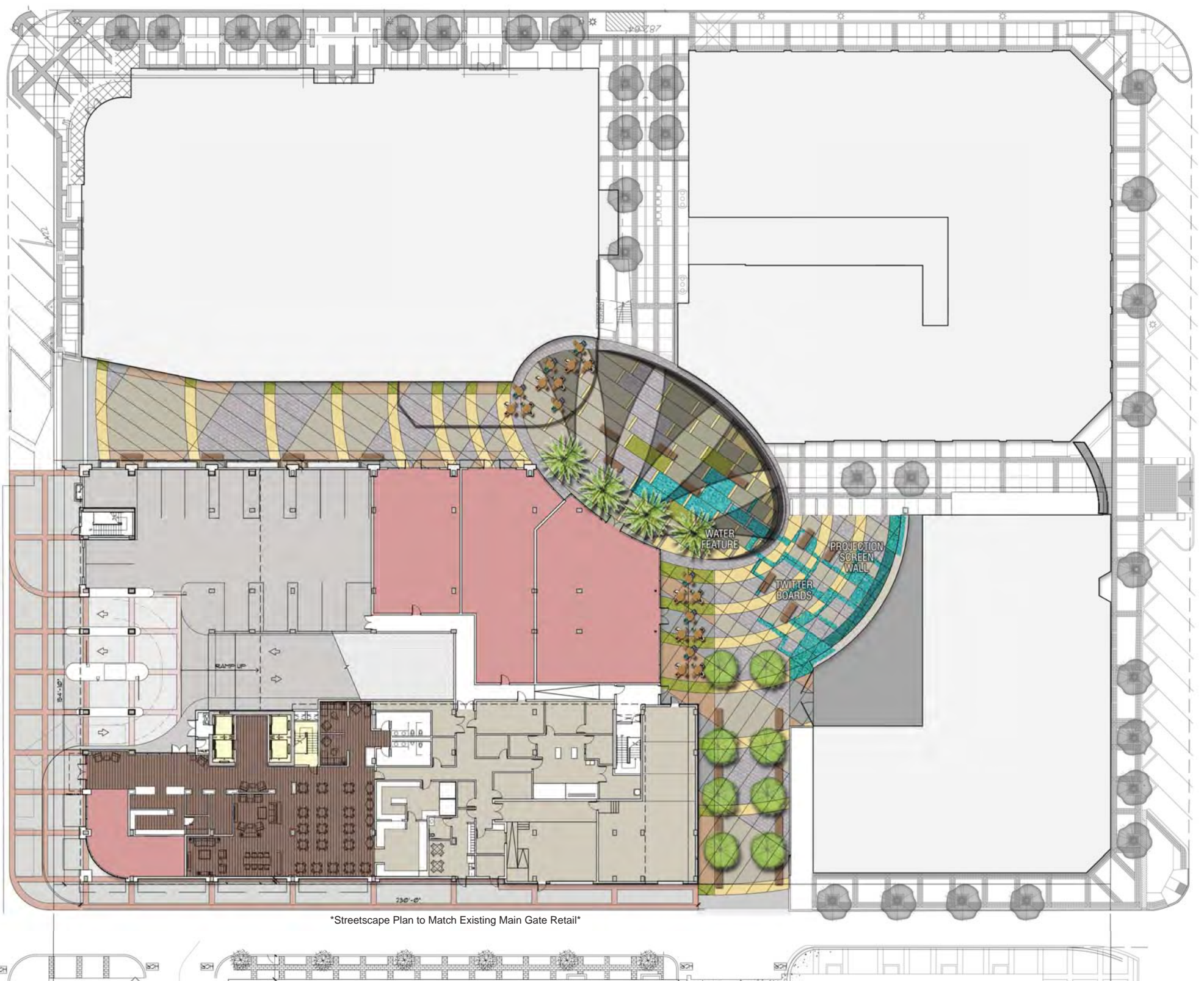


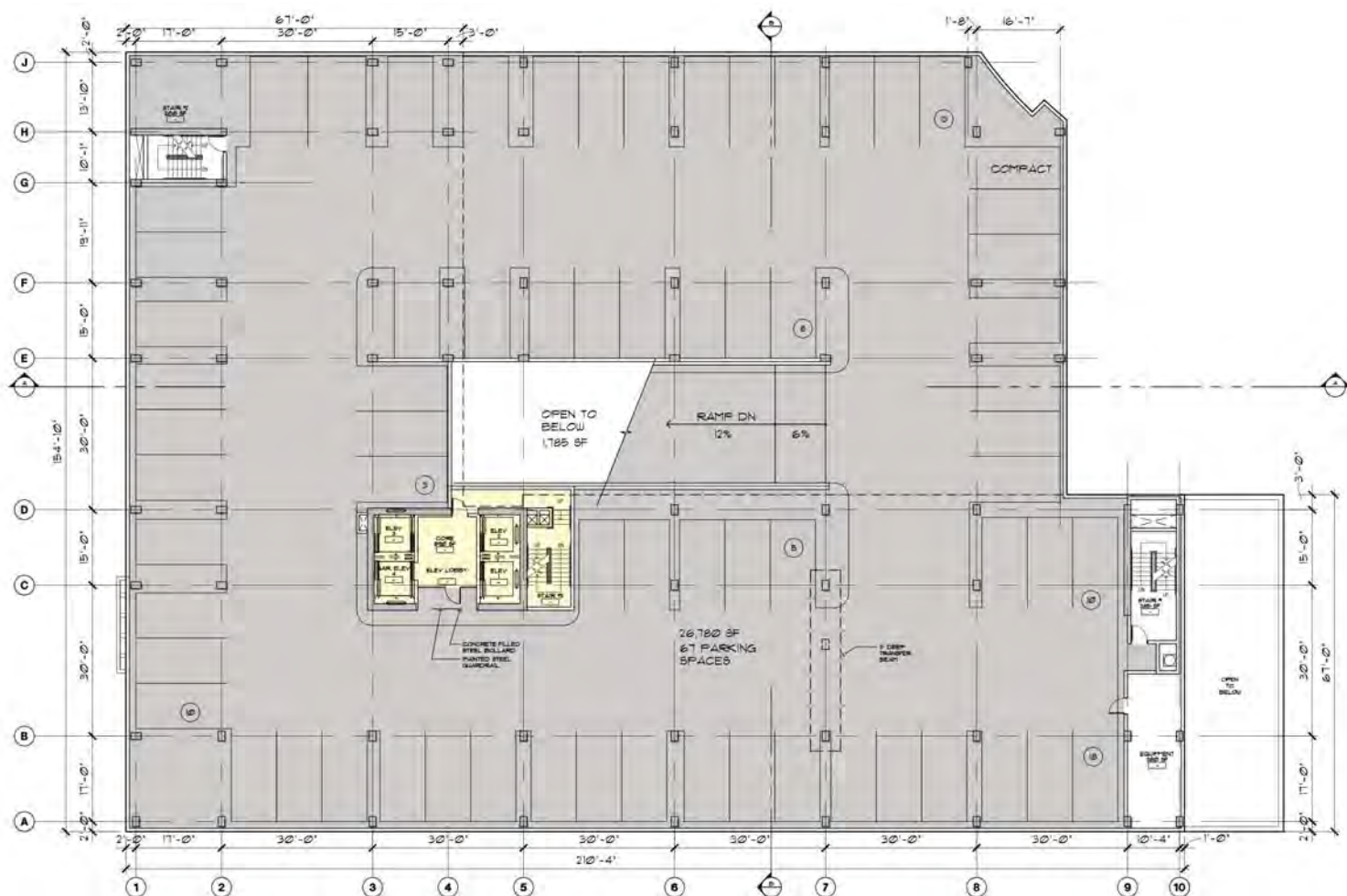
Site Aerial

SCALE: 1" = 60' | 0' | 15' | 30' | 60'



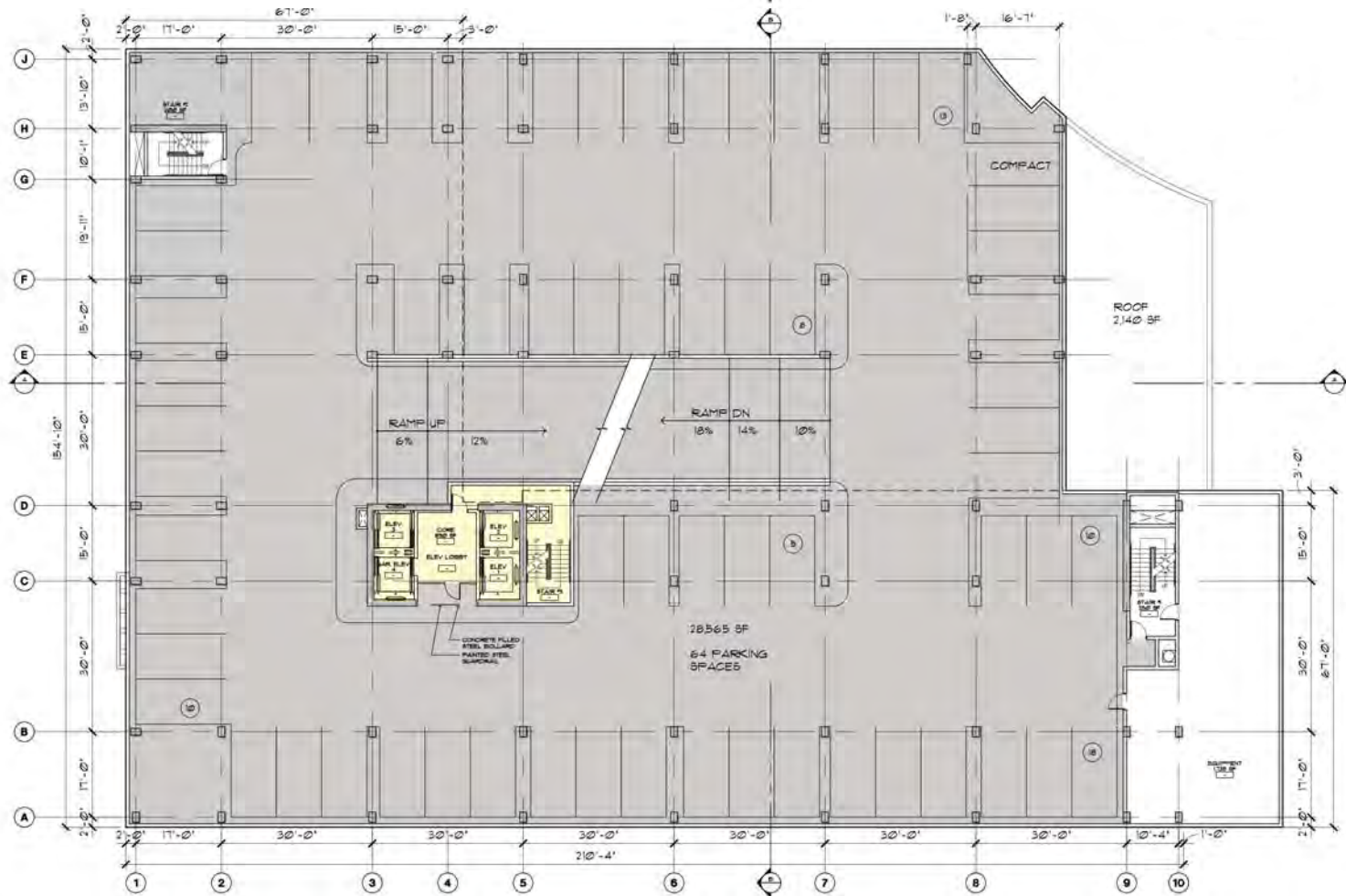
Contextual View
Northwest View





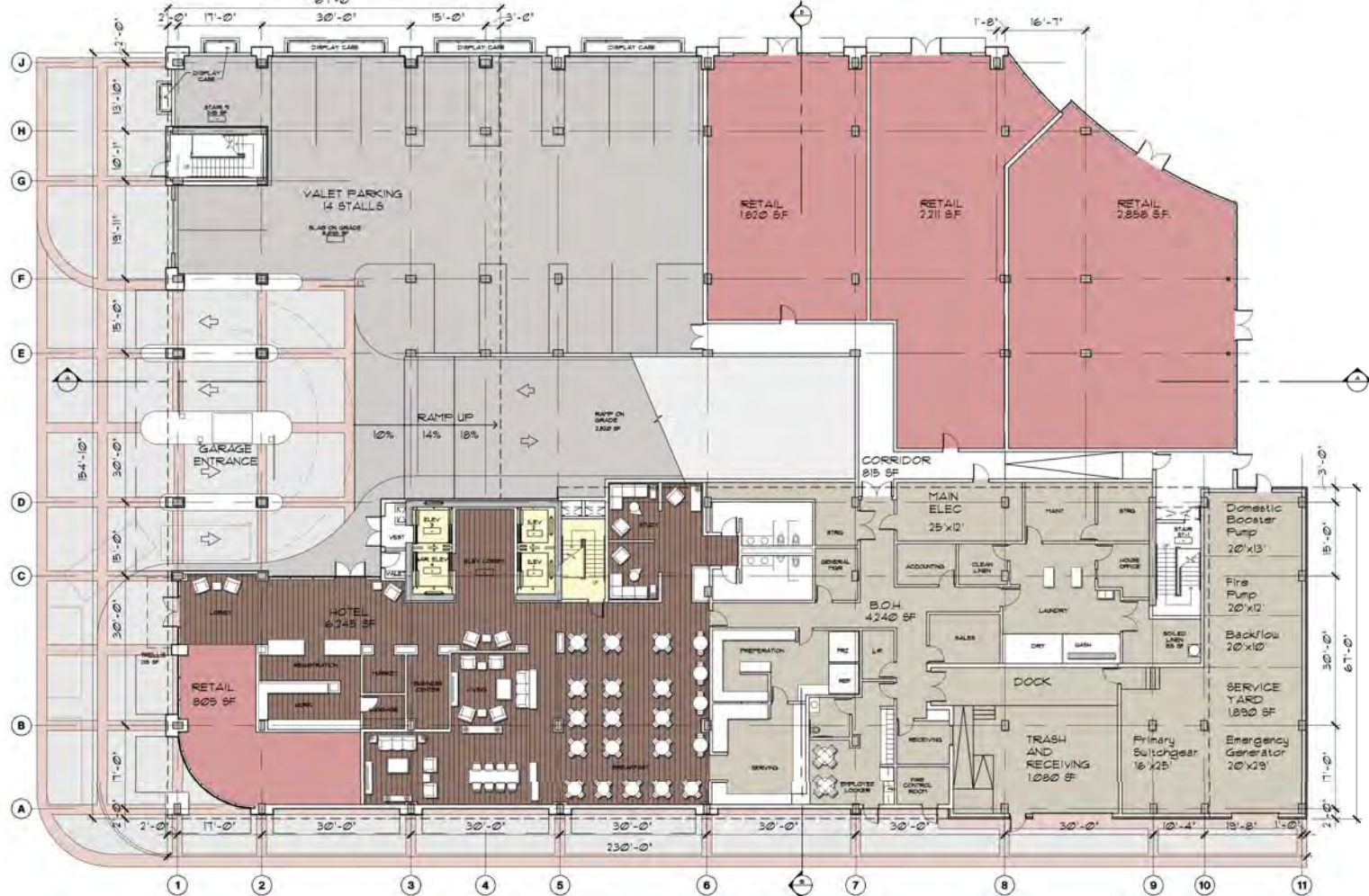
1,855 SF - Hotel
 26,780 SF - Parking
 28,635 SF - GSF

Third Floor Plan



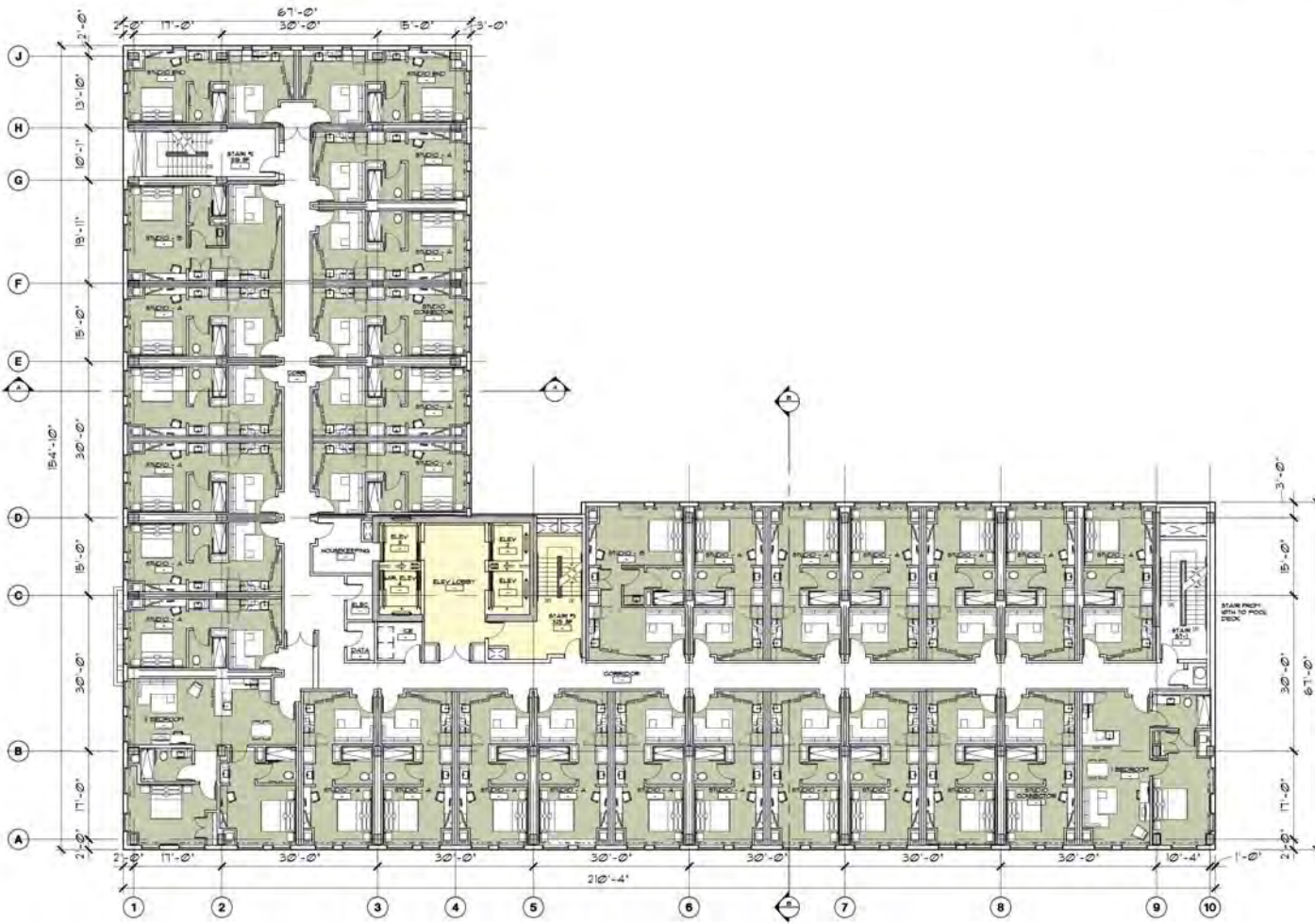
3,175 SF - Hotel
 28,565 SF - Parking
 2,140 SF - Roof
 33,880 SF - GSF

Second Floor Plan



14,515 SF - Hotel
 7,694 SF - Retail
 10,855 SF - Parking
 33,064 SF - GSF

Ground Floor Plan



Studio A	24
Studio B	2
Studio End	2
Studio Conn	2
1 Bedroom	1
2 Bedroom	1
Floor Total	32

19,930 SF - Hotel
19,930 SF - GSF

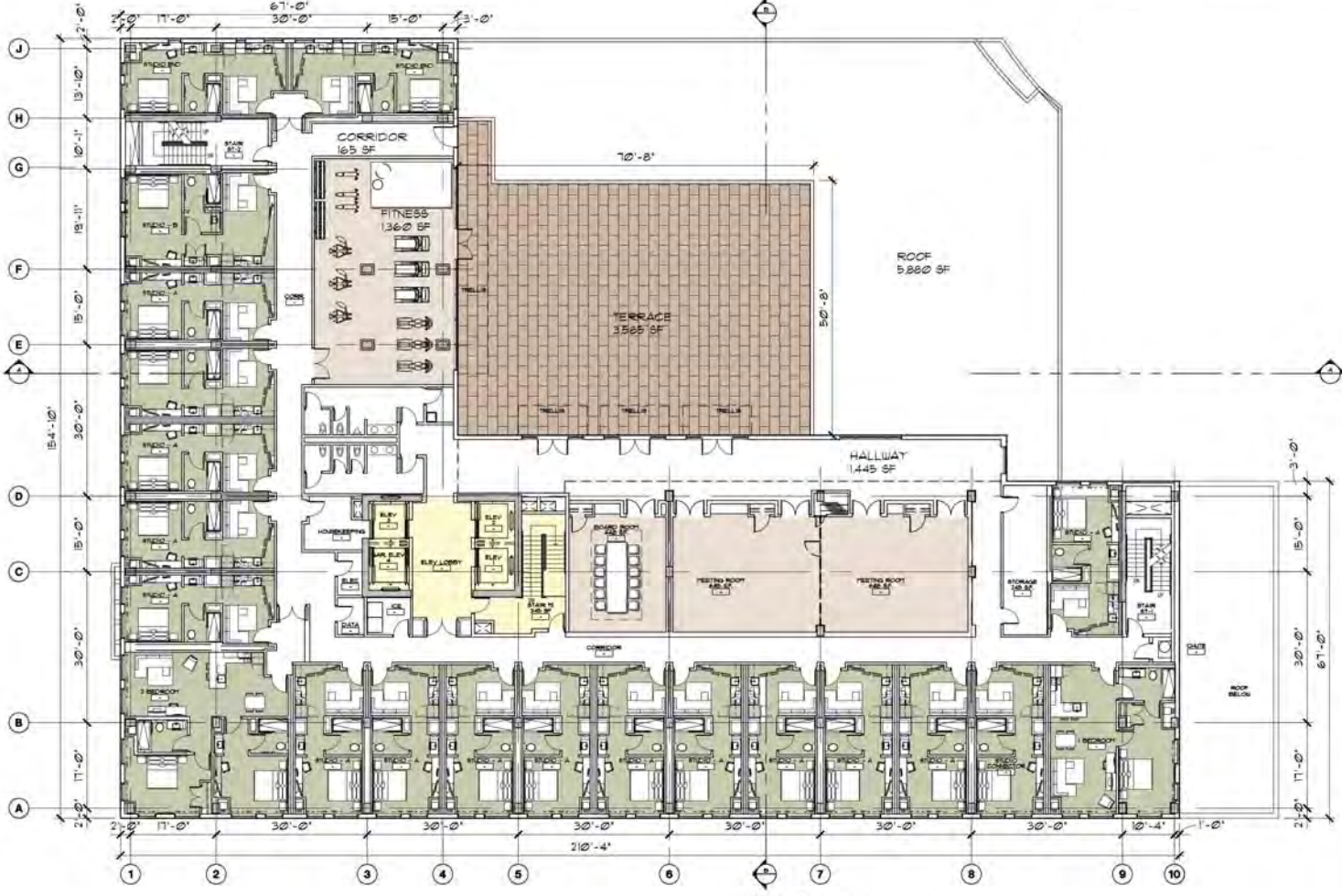
Typical Floor Plan
Sixth-Tenth



Studio A	24
Studio B	2
Studio End	2
Studio Conn	2
1 Bedroom	1
2 Bedroom	1
Floor Total	32

19,930 SF - Hotel
1,060 SF - Roof
20,990 SF - GSF

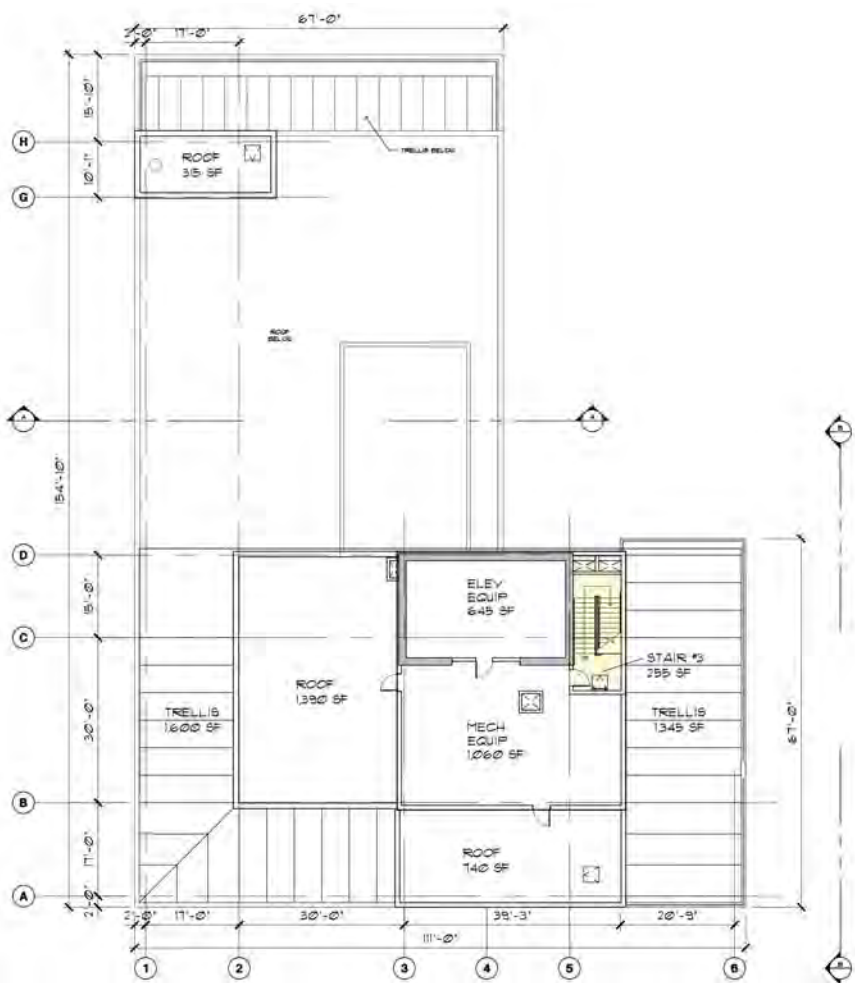
Fifth Floor Plan



Studio A	14
Studio B	1
Studio End	2
Studio Conn	1
1 Bedroom	1
2 Bedroom	1
Floor Total	21

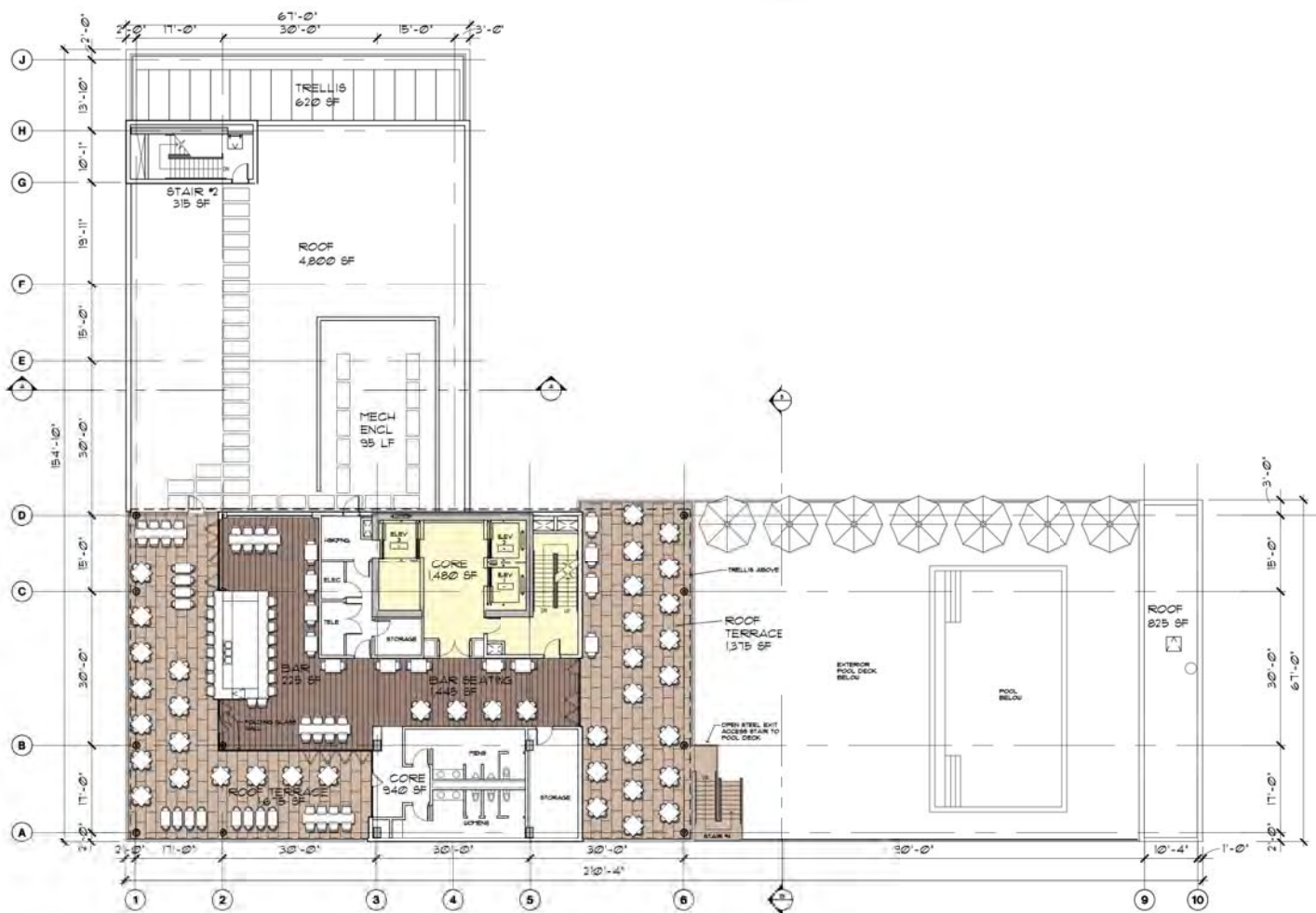
20,960 SF - Hotel
3,585 SF - Terrace
5,880 SF - Roof
30,425 SF - GSF

Fourth Floor Plan



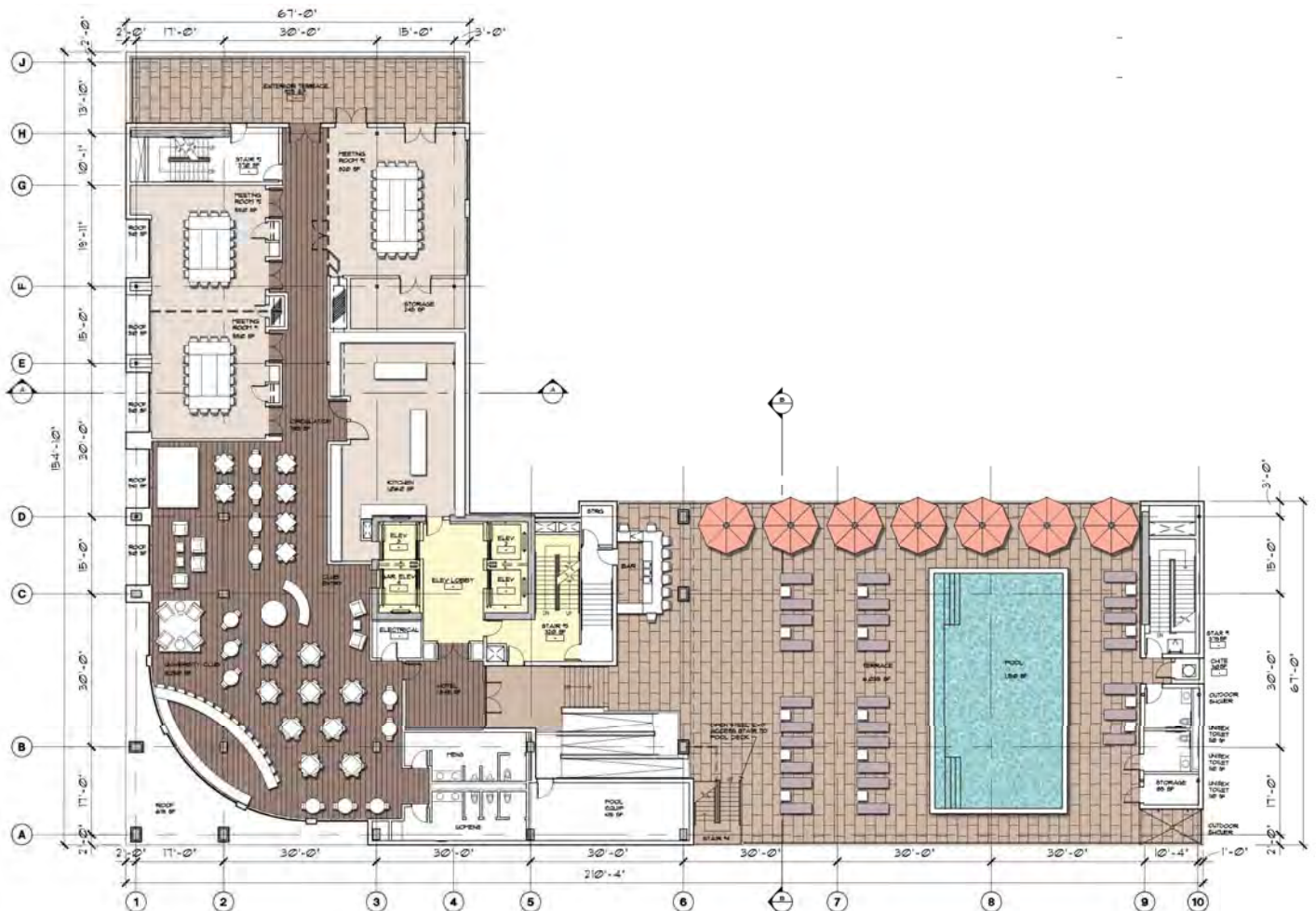
1,960 SF - Hotel
 2,445 SF - Roof
 4,405 SF - GSF

Mechanical / Roof Plan



2,735 SF - Hotel Core
 1,670 SF - Bar Conditioned
 3,050 SF - Roof Terrace
 5,625 SF - Roof
 13,080 SF - GSF

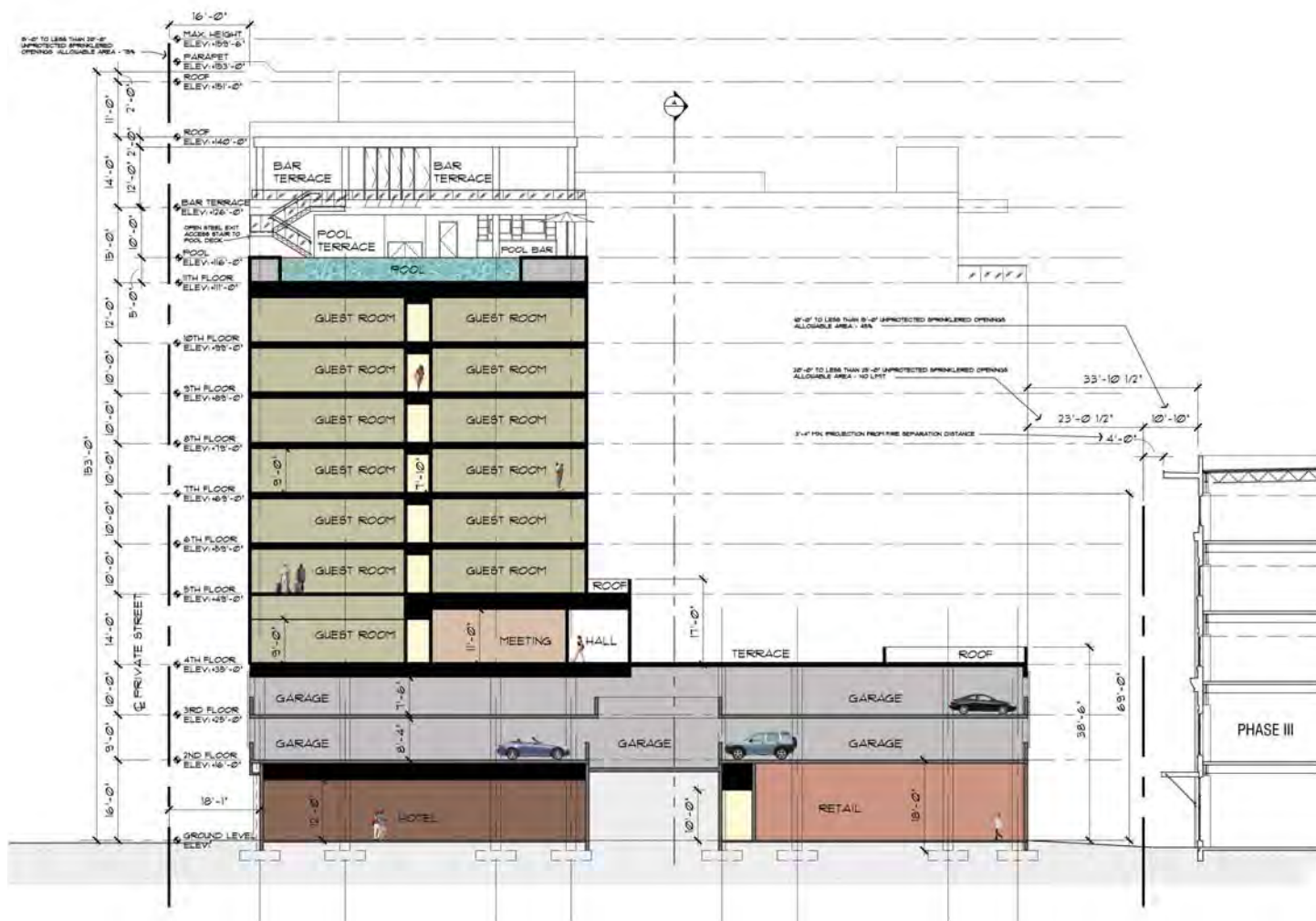
Twelfth Floor Plan



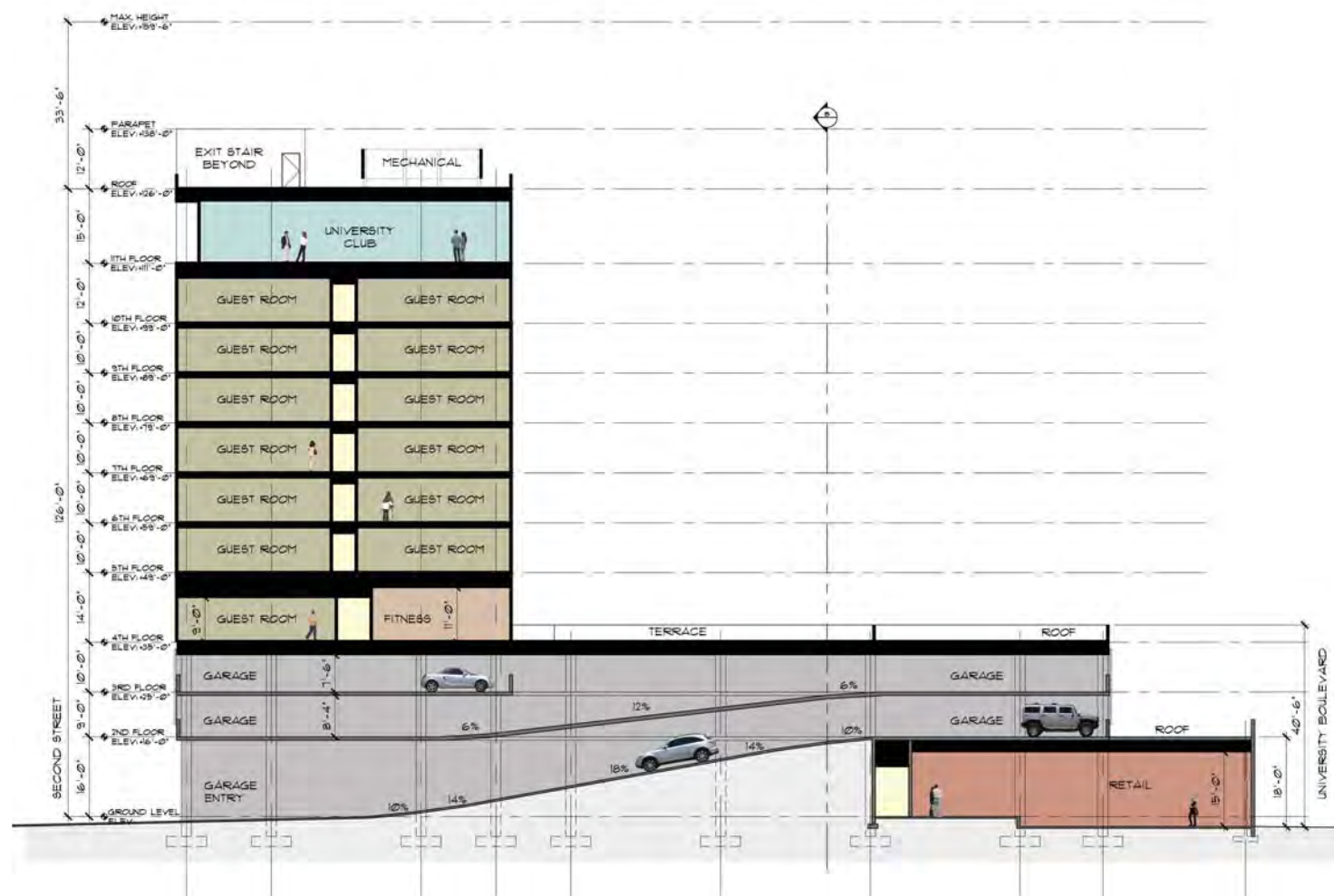
Hotel	Club
2,635 SF - Hotel	8,250 SF - Club
6,035 SF - Terrace	925 SF - Terrace
1,150 SF - Pool	935 SF - Roof
9,820 SF - Hotel Total	10,110 SF - Club Total

19,930 SF - GSF

Eleventh Floor Plan

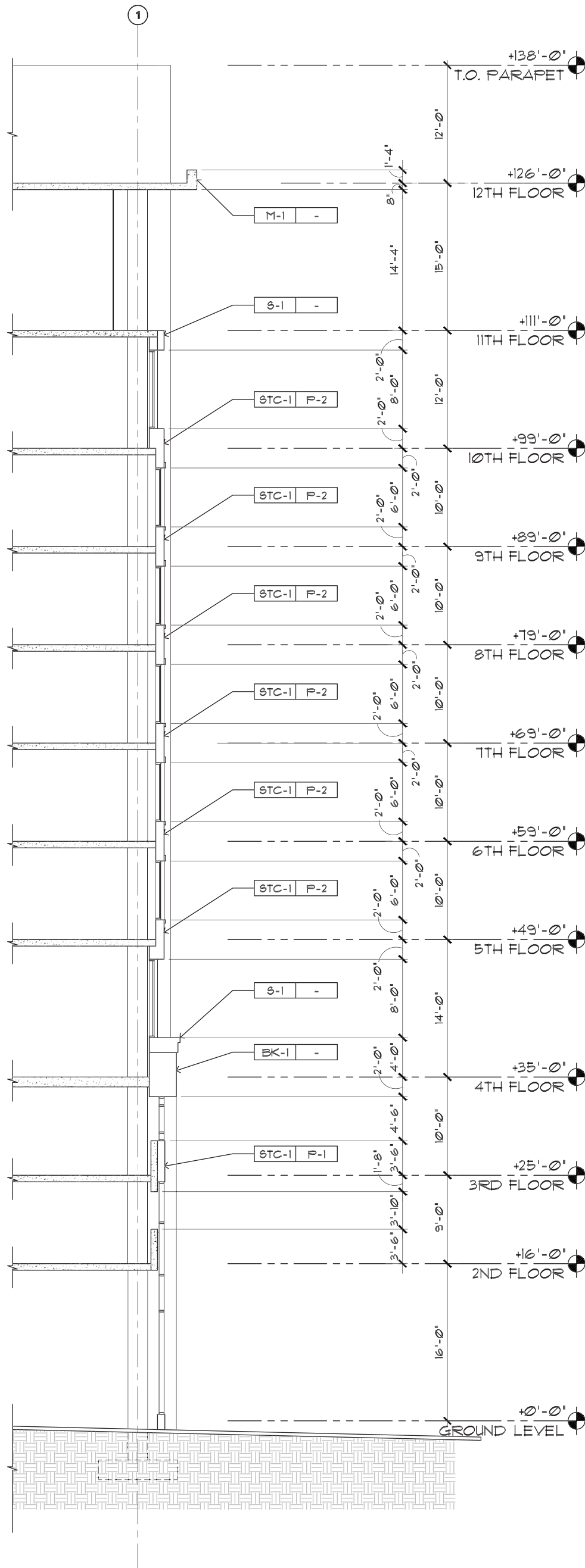


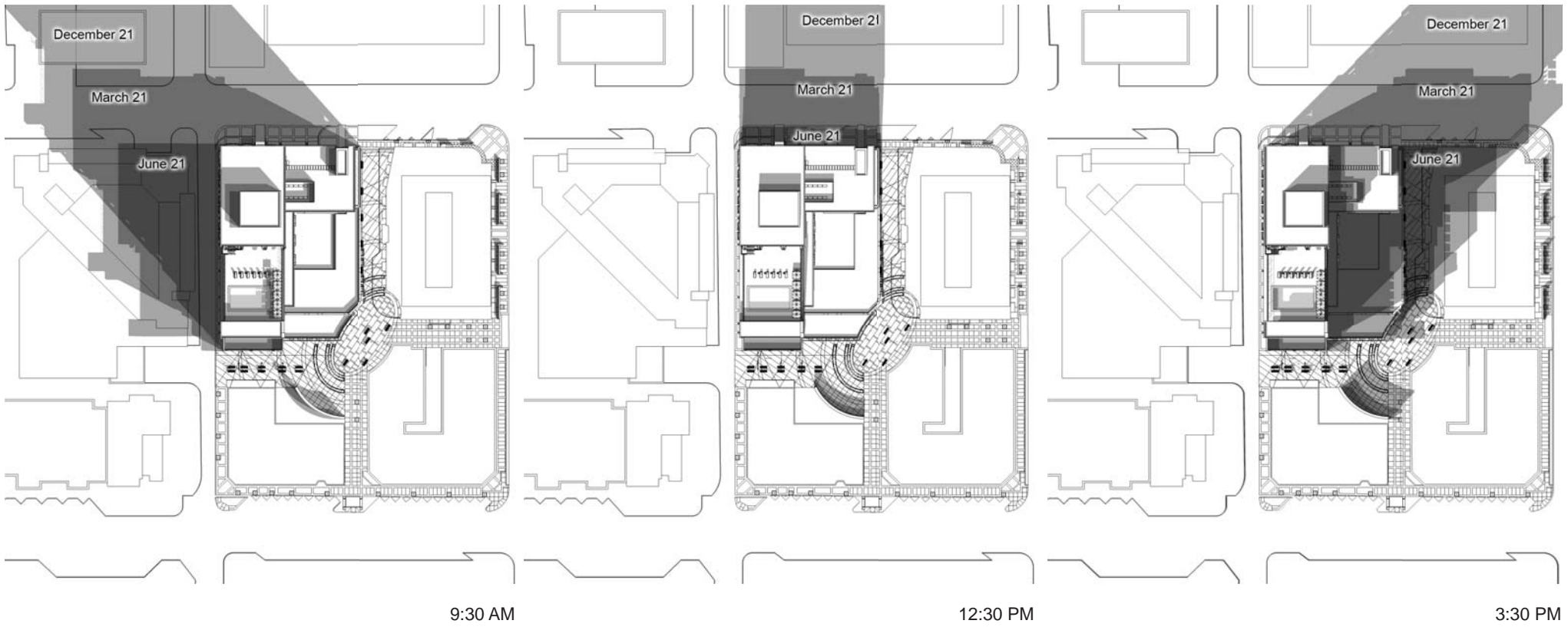
Section B-B



Section A-A

MAX. HEIGHT
ELEV: +159'-6"





9:30 AM

12:30 PM

3:30 PM



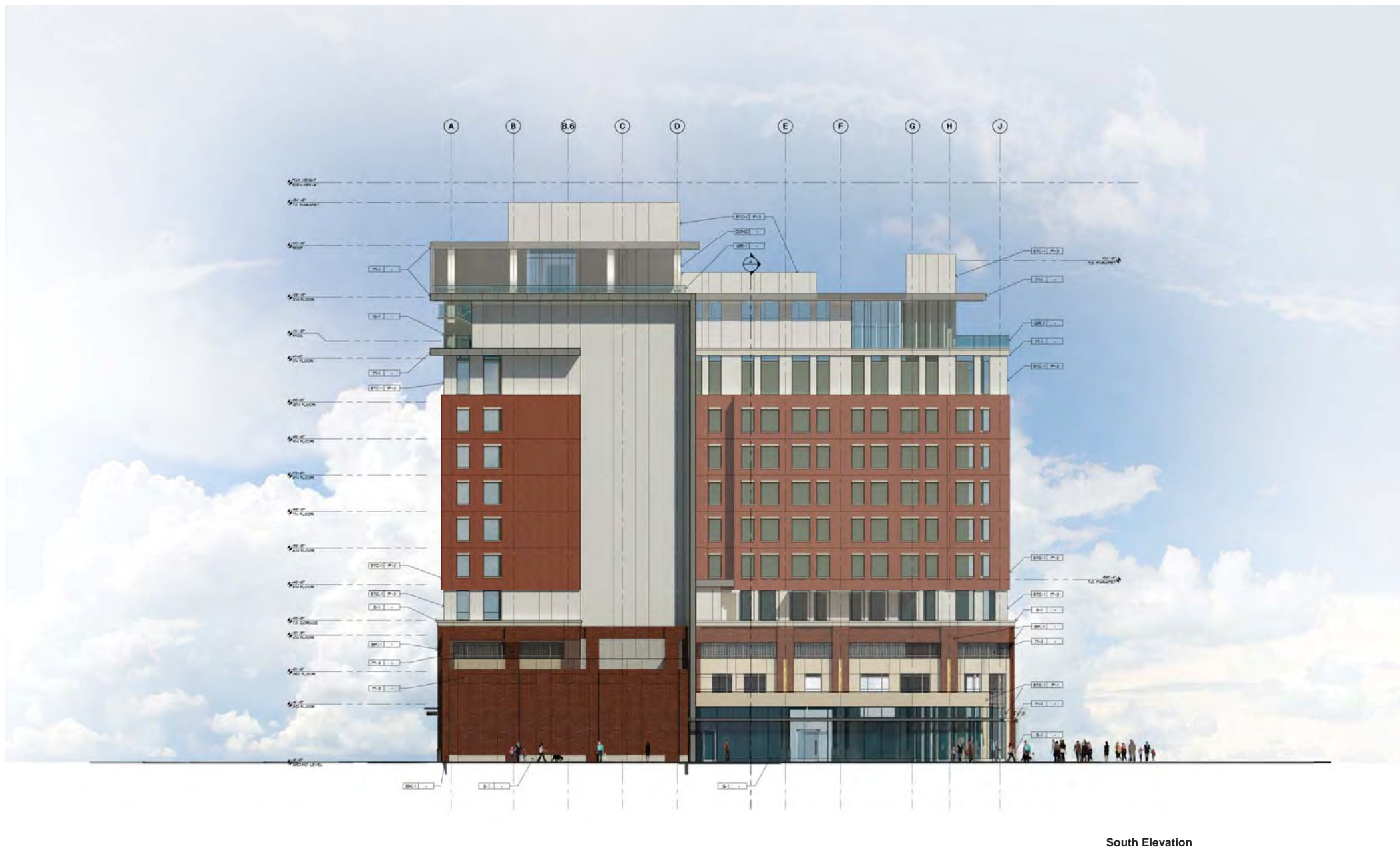
9:30 AM



12:30 PM



3:30 PM







Northwest View



Southeast View





Plaza Retail View



South Plaza View



Northwest Pool View



Northeast Pool View



South University Club View



Northeast University Club View

WOOD

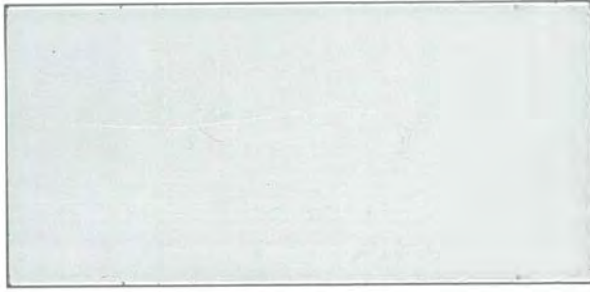


WD-1
Product: Composite Panel
Manufacturer: Trespa
Color: Loft Gray

METAL



M-1
Product: Metal
Manufacturer: Berridge
Color: "Preweathered Galvalume"
Finish: Kynar 500



M-2
Product: Metal
Manufacturer: Southwest Aluminum
Color: "Clear Anodized"

PAINT



P-1
Product: Paint
Manufacturer: Dawn Edwards
Color: "Gourmet Honey" DE6150



P-2
Product: Paint
Manufacturer: Dawn Edwards
Color: "Autumn Umber" DE5216



P-3
Product: Paint
Manufacturer: Dawn Edwards
Color: "Foil" DE6360

GLASS



G-1
Product: Glass
Manufacturer: PPG
Type: Solarban 60

Material Board

STONE



CONC-1
Product: Concrete Color
Manufacturer: Davic Colors
Color: "Light Gray" 8084



CONC-2
Product: Concrete Color
Manufacturer: Davis Colors
Color: "Outback" 677



S-1
Product: Stone
Manufacturer: Indiana Limestone Co.
Color: A-0540
Finish: Abrasive
Grade: Rustic



S-2
Product: Stone
Manufacturer: Vetter Stone Co.
Color: "Northern Buff" - Veine
Finish: Honed Finish



BK-1
Product: Brick
Manufacturer: Phoenix Brick
Color: "Sunset Red Smooth"

STUCCO TEXTURE



STC-1
Product: Stucco
Manufacturer: Dryvit
Finish: "Weatherlast Smooth"