

United States Department of the Interior
National Park Service

National Register of Historic Places Continuation Sheet

Section Number photos

Page ADDL

Aldea Linda Residential Historic District

PHOTOGRAPHS

The following information is the same for all photographs accompanying this nomination. Photographs are labeled with an archival pen.

County and State: Pima, Arizona

Name of Photographer: Ralph Comey

Location of Original Negative: Janet H. Strittmatter, Inc.

Information for Individual Photographs

Photo Name

Date

View Direction

No. 1

View along Calle Jabali showing typical streetscape.

August 27, 2007.

East.

No. 2

View from Calle Jabali towards typical entry drive showing natural desert vegetation along street and drive.

August 27, 2007.

South.

No. 3

Sam Goddard, Jr. and Julia Hatch Goddard House. 4813 E. Calle Jabali (#4B).

May 1, 2007

North.

No. 4

Typical Ranch style house. 4950 E. Calle Jabali (#10B).

May 14, 2007.

Southwest.

United States Department of the Interior
National Park Service

National Register of Historic Places Continuation Sheet

Section Number photos Page ADDL

Aldea Linda Residential Historic District

No. 5

Unusual Ranch style house designed by Josias T. Joesler. 4812 E. Calle Jabali (#8B).
May 1, 2007.
Southeast.

No. 6

Ranch Neo-Eclectic style house. 4817 Calle Jabali (#4A).
May 14, 2007.
North.

No. 7

Typical Modern style house. 4848 E. Calle Jabali (#8A).
May 14, 2007.
South.

No. 8

Modern Style Holland Hall, Unitarian Church. 4831 E. Twenty-Second Street (#15).
May 14, 2007.
North.

No. 9

Sonoran Revival style house.
May 14, 2007
Southeast.

No. 10

Spanish Colonial Revival style Art School. 1133 S. Swan Road (#6).
May 14, 2007.
Northeast.

No. 11

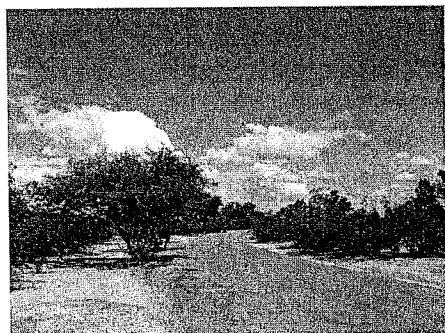
View from Calle Jabali showing typical natural desert vegetation.
October 3, 2008
Southeast.

United States Department of the Interior
National Park Service

National Register of Historic Places Continuation Sheet

Section Number photos Page ADDL

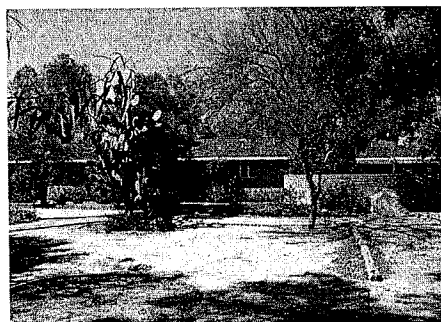
Aldea Linda Residential Historic District



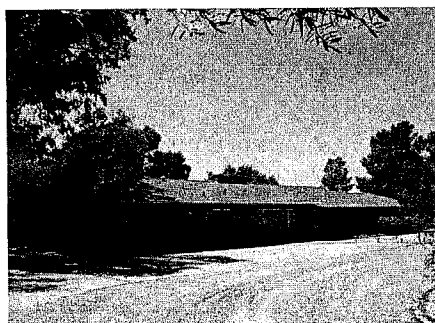
No. 1



No. 2



No. 3



No. 4

United States Department of the Interior
National Park Service

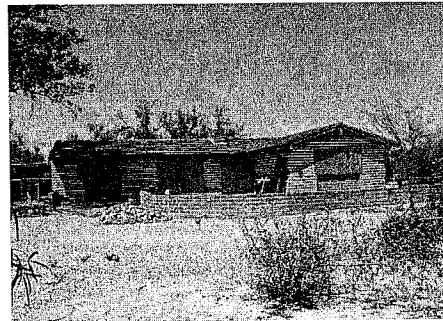
National Register of Historic Places Continuation Sheet

Section Number photos Page ADDL

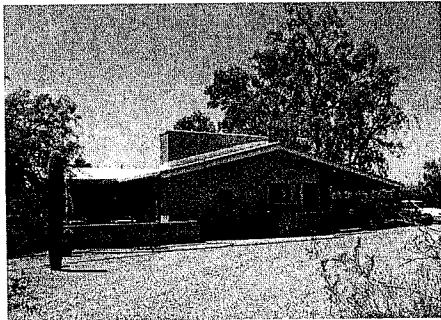
Aldea Linda Residential Historic District



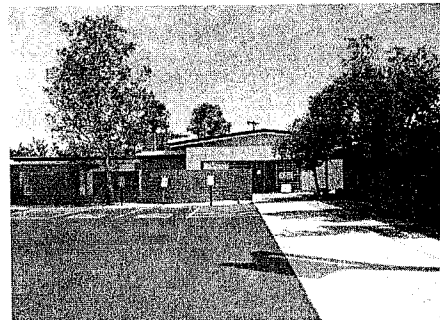
No. 5



No. 6



No. 7



No. 8

United States Department of the Interior
National Park Service

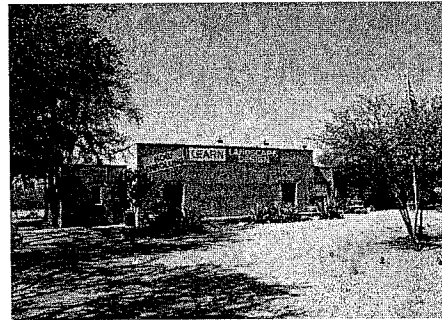
National Register of Historic Places Continuation Sheet

Section Number photos Page ADDL

Aldea Linda Residential Historic District



No. 9



No. 10



No. 11

United States Department of the Interior
National Park Service

National Register of Historic Places Continuation Sheet

Section Number Additional Information Page ADD

Aldea Linda Residential Historic District

ADDITIONAL INFORMATION

Expanded Plant List

Floor Plan, Peirce House
4756 E. Calle Jabali (#7)
Designer/Builder Tom Gist

Elevations, Peirce House
4756 E. Calle Jabali (#7)
Designer/Builder Tom Gist

Historical Photographs

No. 1 Sam Goddard, Jr.
("Goddard, Sam," 2006)

No. 2 "Former Arizona Governor Samuel P. Goddard, Jr. is shown with his family. From left are son Terry, now Arizona's Attorney General; wife Judy; son Bill; Sam and son Tim." (ASU Libraries, n.d.)

No. 3 Milo R. Perkins
("Former...", 1972.)

No. 4 Gerry Peirce with his students.
("Gerry Peirce...", 1949.)

No. 5 Gerry Peirce
("Artist...", 1969.)

No. 6 Desert Setting, by Gerry Peirce
("Gerry Peirce...", 1949.)

No. 7 Kay Bonfoey at her drawing board.
(Peck 1978.)

United States Department of the Interior
National Park Service

National Register of Historic Places Continuation Sheet

Section Number Additional Information Page ADD

Aldea Linda Residential Historic District

JABALI NEIGHBORHOOD PLANT LIST

NATURAL AREAS

Larrea tridentata

Creosote

BONFOEY CENTER

Acacia farnesiana

Sweet Acacia

Agave species

Agave

Calliandra species

Calliandra

Chilopsis linearis

Desert Willow

Citrus species

Citrus

Euphorbia rigida

Gopher Plant

Ferocactus wislizenii

Barrel Cactus

Fouquieria splendens

Ocotillo

Hesperaloe funifera

Giant Acacia

Lantana montevidensis

Purple Lantana

Leucophyllum frutescens

Texas Ranger

Prosopis velutina

Velvet Mesquite

Tecoma stans

Yellow Oleander

Vauquelinia californica

Arizona Rosewood

UNITARIAN CHURCH

Agave species

Agave

Bougainvillea species

Bougainvillea

Buddleia marrubifolia

Butterfly Bush

Calliandra californica

Baja Fairy Duster

Eucalyptus species

Eucalyptus

Fouquieria splendens

Ocotillo

Leucophyllum frutescens

Texas Ranger

Ligustrum lucidum

Glossy Privet

Macfadyena unguis-cati

Cat's Claw

Olea europaea

Olive

Parkinsonia (Cercidium) floridum

Blue Palo Verde

Rhus lancea

African Sumac

Expanded Plant List (Waterfall 2007)

United States Department of the Interior
National Park Service

National Register of Historic Places Continuation Sheet

Section Number Additional Information Page ADD

Aldea Linda Residential Historic District

FRONT YARDS - CALLE JABALI

Agave species	Agave
Carnegiea gigantea	Saguaro
Cupressus sempervirens	Italian Cypress
Eucalyptus species	Eucalyptus
Ferocactus wislizenii	Barrel Cactus
Ficus pumila	Creeping Fig
Fouquieria splendens	Ocotillo
Hedera helix	English Ivy
Hesperaloe parvifolia	Red Hesperaloe
Lantana montevidensis	Purple Lantana
Leucophyllum frutescens	Texas Ranger
Macfadyena unguis-cati	Cat's Claw
Myrtus communis	Myrtle
Nerium oleander	Oleander
Olea europaea	Olive
Opuntia species	Prickly Pear
Parkinsonia aculeata	Mexican Palo Verde
Parkinsonia (Cercidium) floridum	Blue Palo Verde
Phoenix canariensis	Canary Island Date Palm
Pinus halepensis	Aleppo Pine
Prosopis species	South American Hybrid Mesquite
Prosopis velutina	Velvet Mesquite
Prunus caroliniana	Carolina Laurel Cherry
Rhus lancea	African Sumac
Rosa species	Rose
Washingtonia robusta	California Fan Palm
Xylosma congestum	Xylosma
Yucca species	Yucca

ENTRY PLANTINGS (Calle Jabali near Swan)

Caesalpinia gilliesii	Desert Bird of Paradise
Caesalpinia pulcherimma	Red Bird of Paradise
Larrea tridentata	Creosote
Sophora secundiflora	Texas Mountain Laurel

United States Department of the Interior
National Park Service

National Register of Historic Places Continuation Sheet

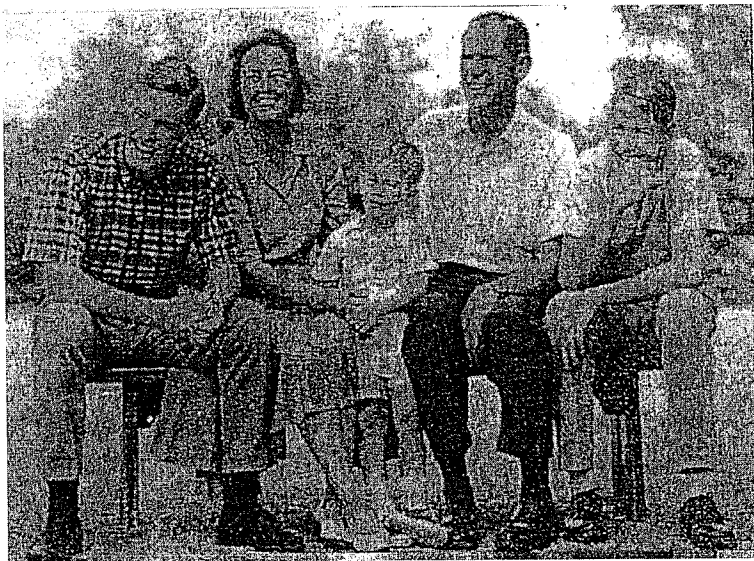
Section Number Additional Information Page ADD

Aldea Linda Residential Historic District

No. 1



No. 2



No. 3



United States Department of the Interior
National Park Service

National Register of Historic Places Continuation Sheet

Section Number Additional Information Page ADD

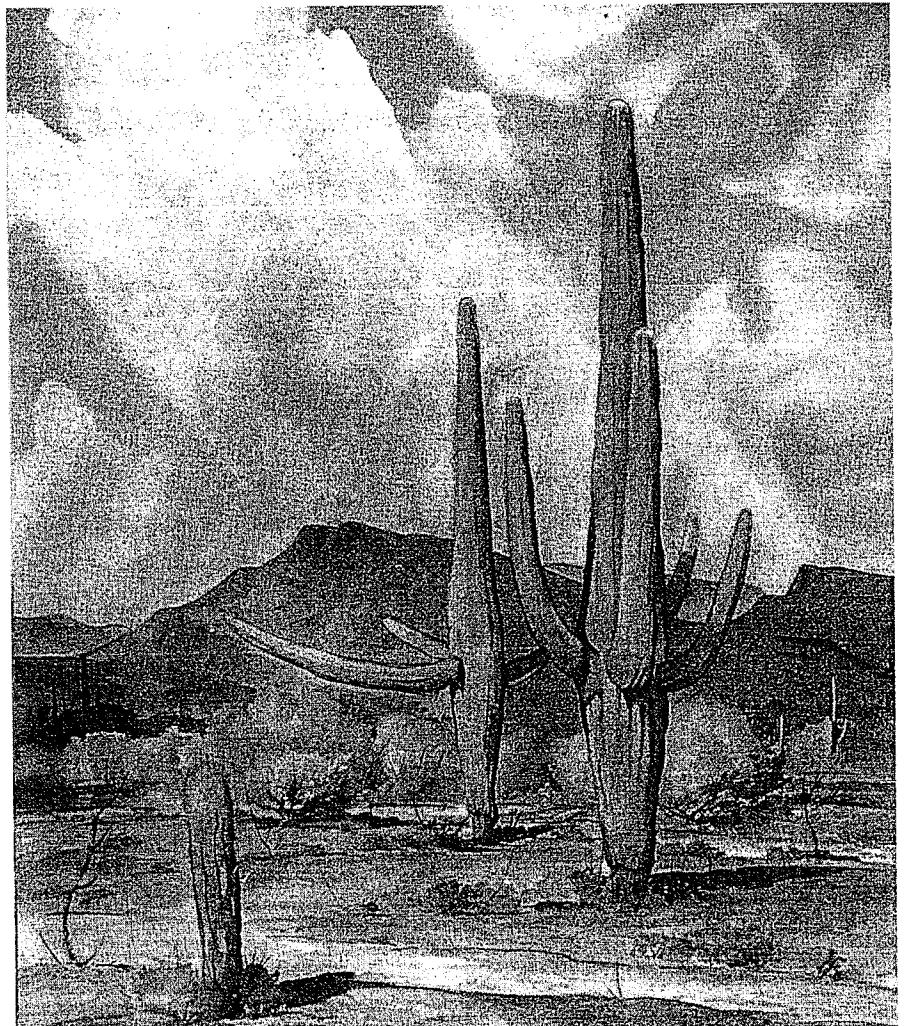
Aldea Linda Residential Historic District



No. 4



No.5



No.6

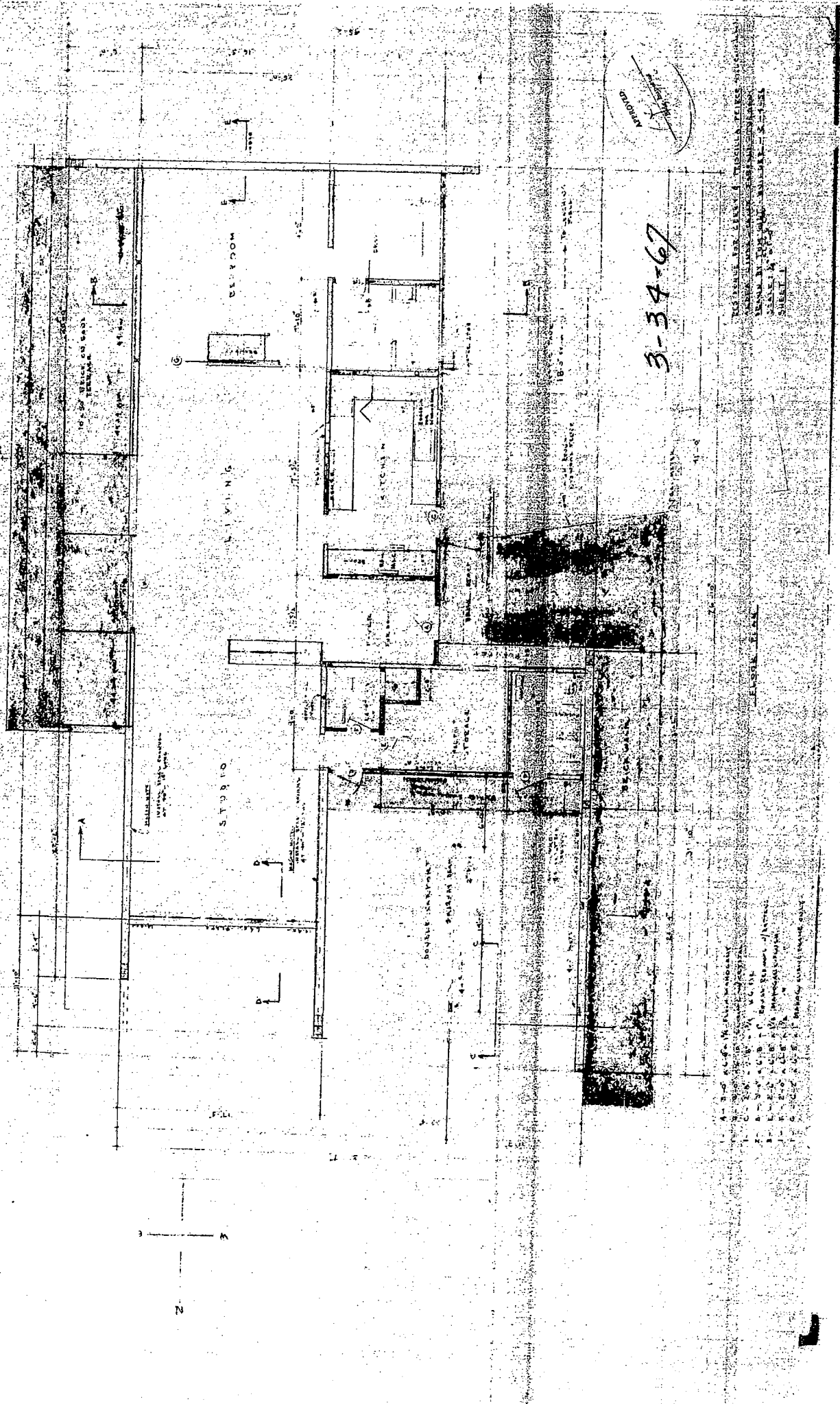
United States Department of the Interior
National Park Service

National Register of Historic Places Continuation Sheet

Section Number Additional Information Page ADD

Aldea Linda Residential Historic District

No. 7

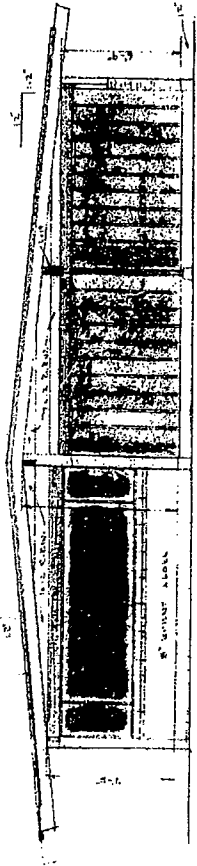


3-34-67

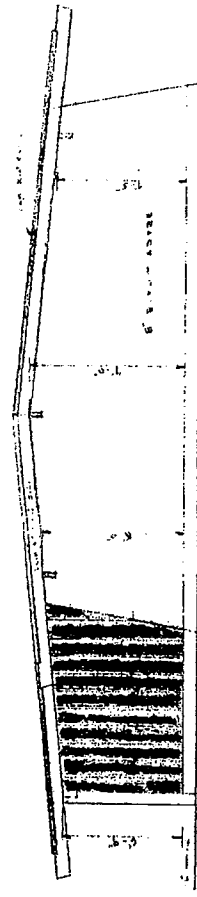
- 1 - 2" x 4" W. ALUM. BRACKET
- 2 - 2" x 4" W. ALUM. BRACKET
- 3 - 2" x 4" W. ALUM. BRACKET
- 4 - 2" x 4" W. ALUM. BRACKET
- 5 - 2" x 4" W. ALUM. BRACKET
- 6 - 2" x 4" W. ALUM. BRACKET
- 7 - 2" x 4" W. ALUM. BRACKET
- 8 - 2" x 4" W. ALUM. BRACKET
- 9 - 2" x 4" W. ALUM. BRACKET
- 10 - 2" x 4" W. ALUM. BRACKET
- 11 - 2" x 4" W. ALUM. BRACKET
- 12 - 2" x 4" W. ALUM. BRACKET
- 13 - 2" x 4" W. ALUM. BRACKET
- 14 - 2" x 4" W. ALUM. BRACKET
- 15 - 2" x 4" W. ALUM. BRACKET
- 16 - 2" x 4" W. ALUM. BRACKET
- 17 - 2" x 4" W. ALUM. BRACKET
- 18 - 2" x 4" W. ALUM. BRACKET
- 19 - 2" x 4" W. ALUM. BRACKET
- 20 - 2" x 4" W. ALUM. BRACKET

DESIGNED BY TOM GIST
 DRAWN BY TOM GIST
 SHEET 1

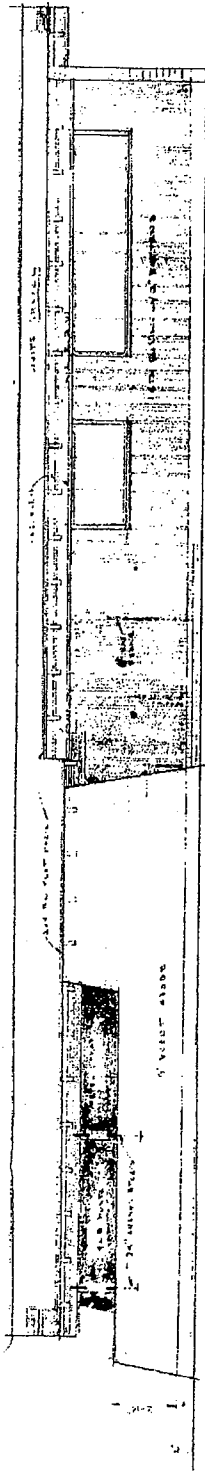
Floor Plan, Peirce House
 4756 E. Calle Jabali (#7)
 Designer/Builder Tom Gist
 (COT Plans, 1956)



NORTH ELEVATION



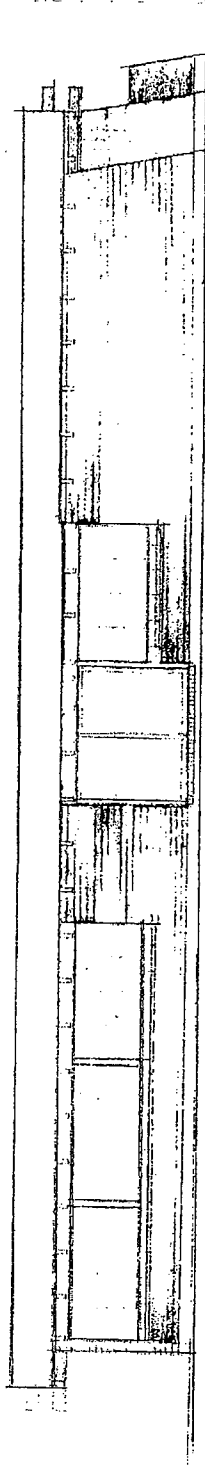
SOUTH ELEVATION



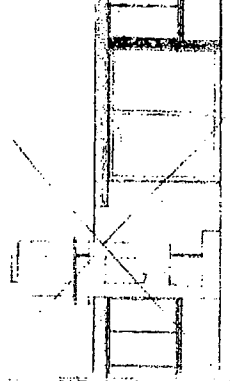
WEST ELEVATION



PEIRCE HOUSE FROM SOUTH



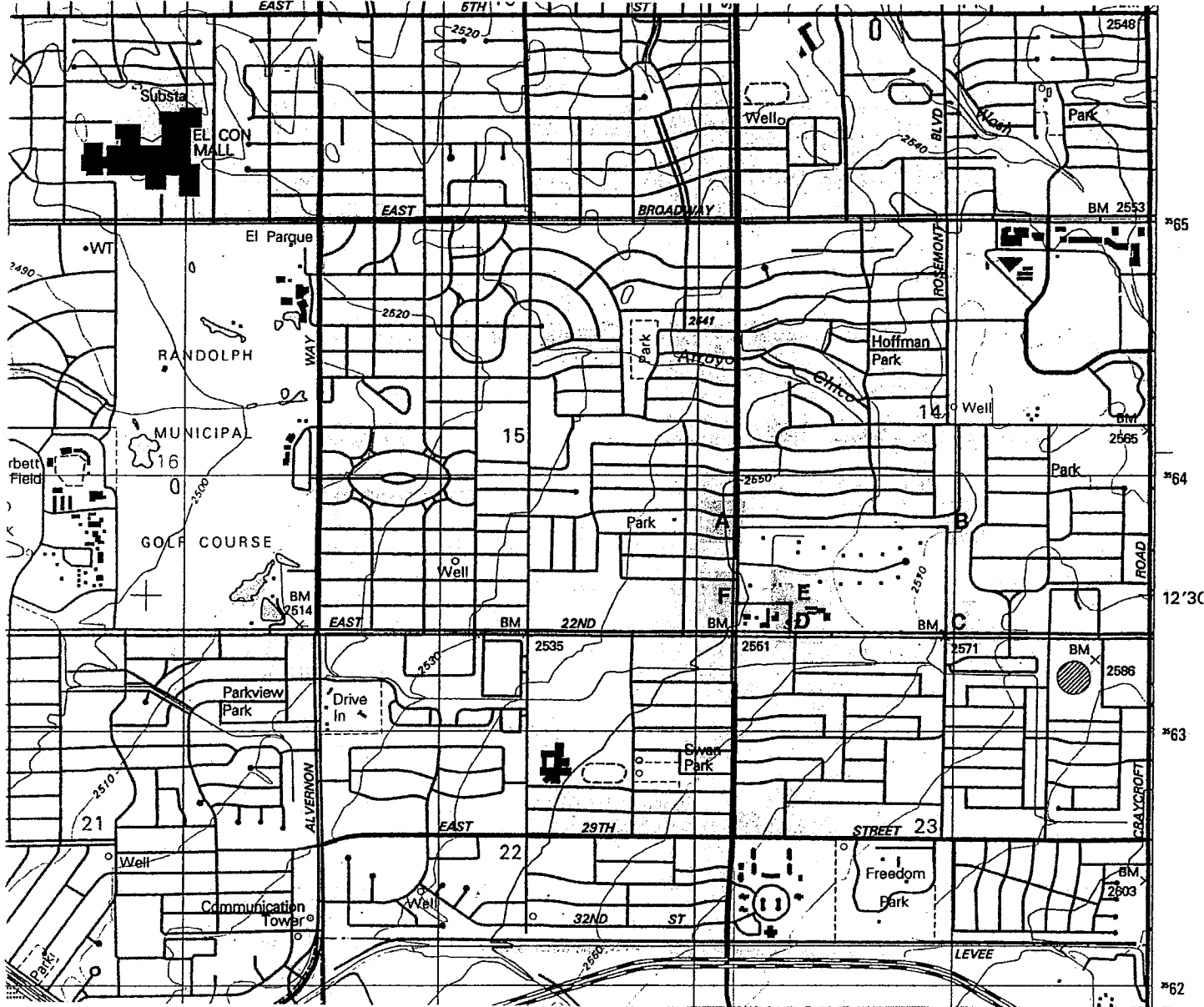
EAST ELEVATION



PEIRCE HOUSE FROM EAST

Scale: 1/4" = 1'-0"
3-34-67
SHEET 2

Elevations, Peirce House
4756 E. Calle Jabali (#7)
Designer/Builder Tom Gist
(COT Plans, 1956)



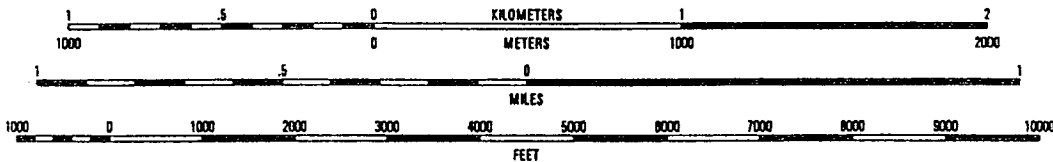
DISTRICT UTM'S

TUCSON, ARIZONA 7.5' MAP

- A 510162E/3563793N
- B 510973E/3563793N
- C 510973E/3563393N
- D 510362E/3563893N
- E 510362E/3563500N
- F 510362E/3563500N

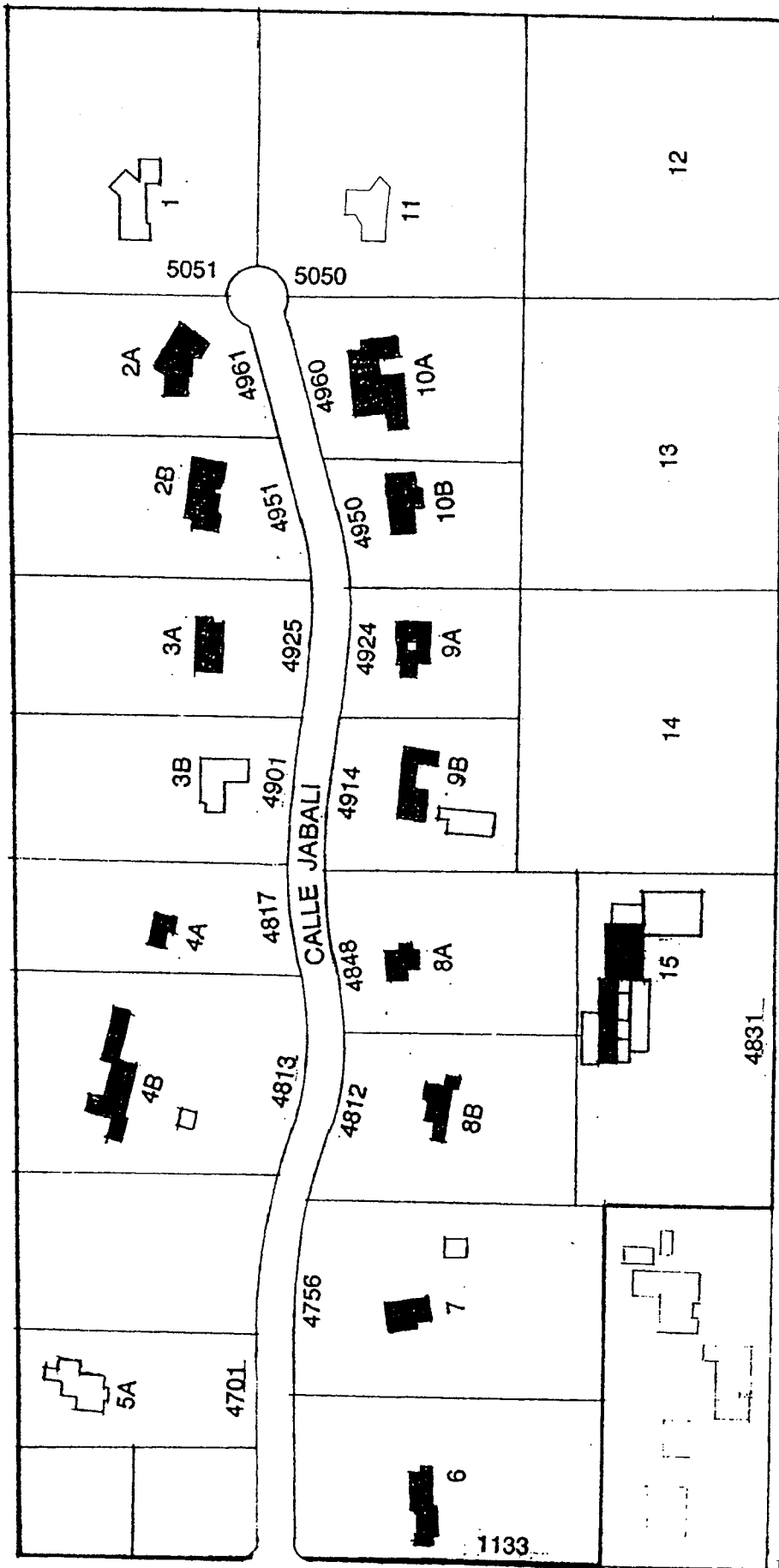
**ALDEA LINDA
RESIDENTIAL HISTORIC DISTRICT
TUCSON, PIMA COUNTY, ARIZONA**

SCALE 1:24 000



**CONTOUR INTERVAL 10 FEET
NATIONAL GEODETIC VERTICAL DATUM OF 1929
TO CONVERT FROM FEET TO METERS, MULTIPLY BY 0.3048**

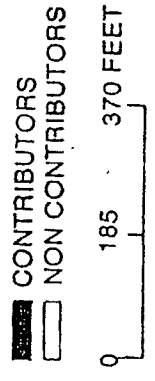
**MAP 1
UTM references
(USGS 1996)**



EAST TWENTY SECOND STREET

SOUTH SWAN ROAD

ALDEA LINDA



MAP 2
Historic Resources

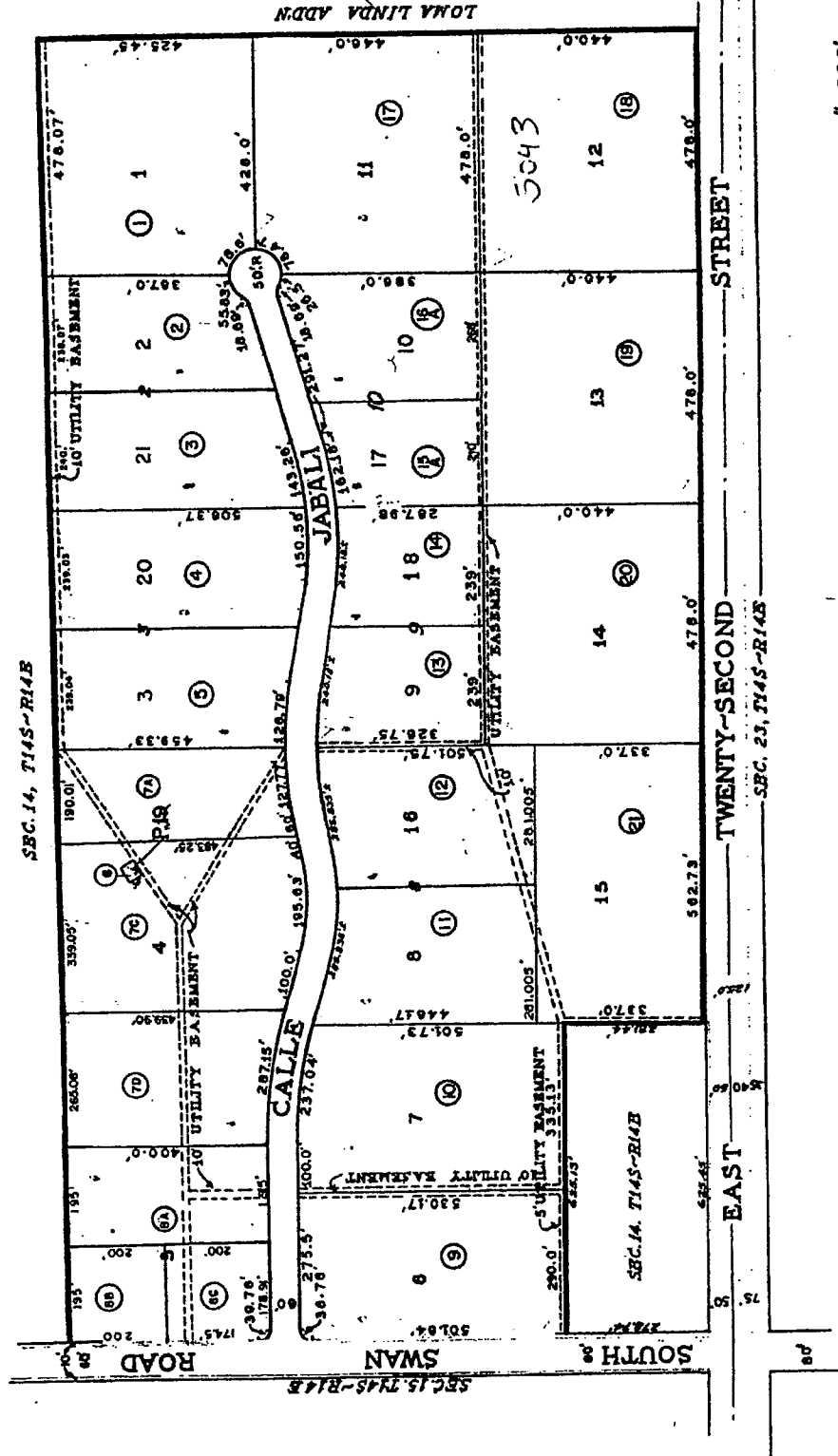
ASSESSOR'S RECORD MAP

ALDEA LINDA SUBDIVISION

128-13

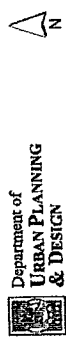
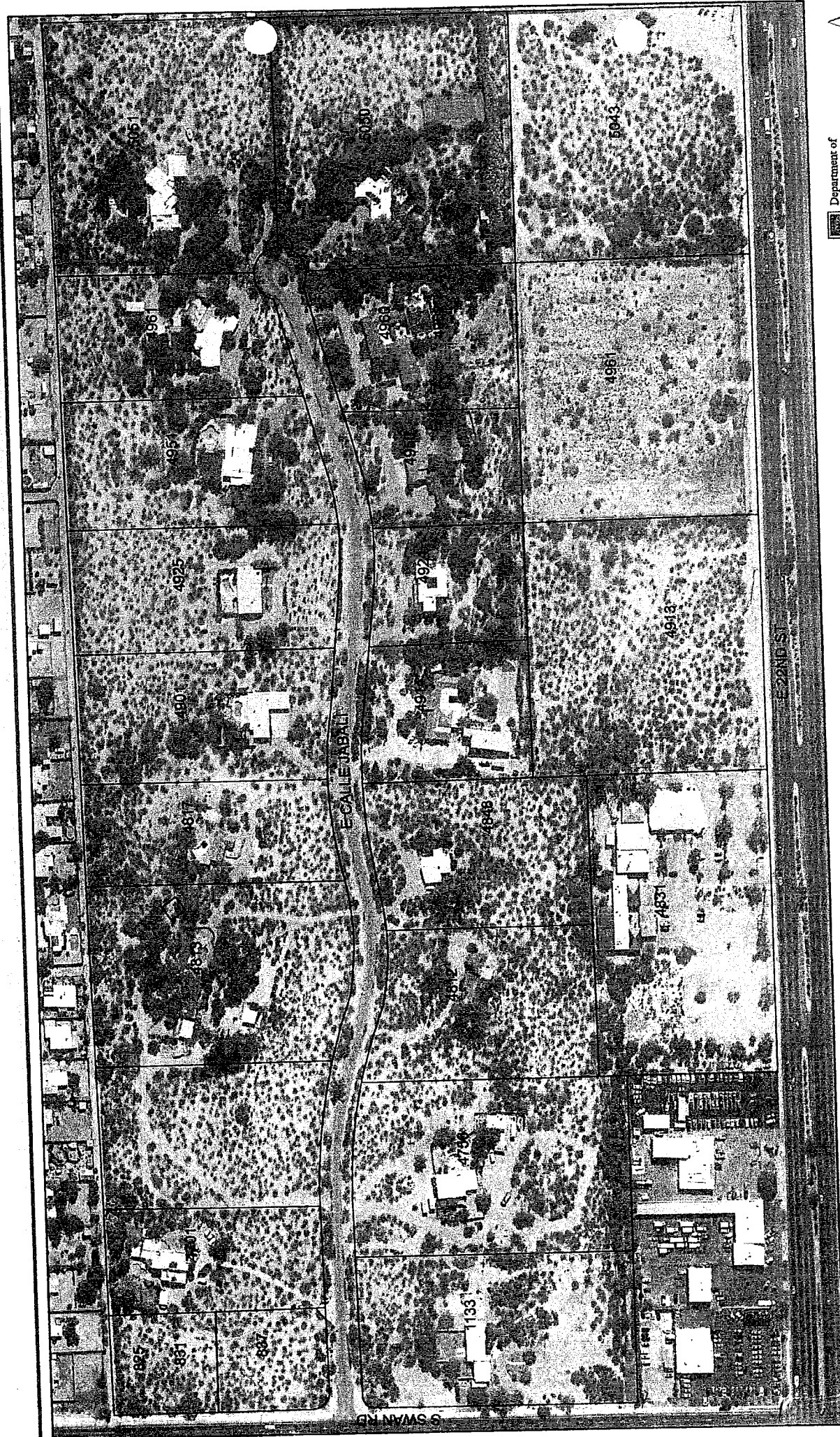
1/1

72

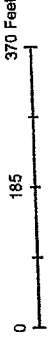


SCALE-1"=200'

SEE BOOK 8 PAGE 53 M & P.
1982

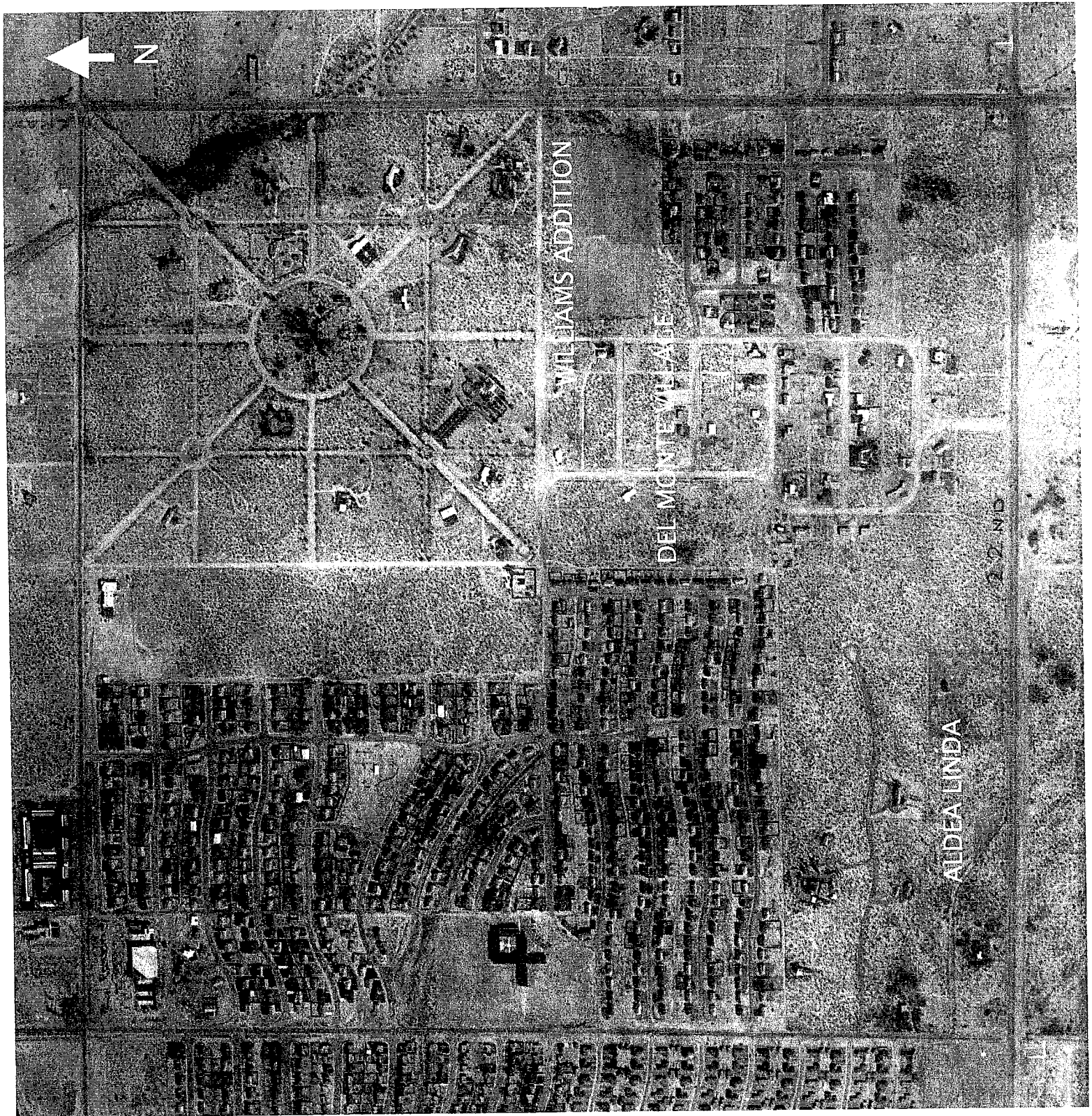


Department of
**URBAN PLANNING
 & DESIGN**



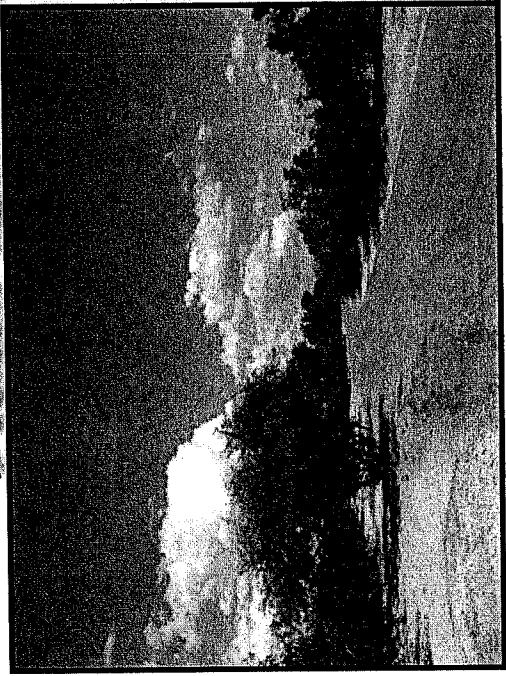
Aldea Linda

**MAP 4
 Aerial Map
 (COT Aerial 2007)**

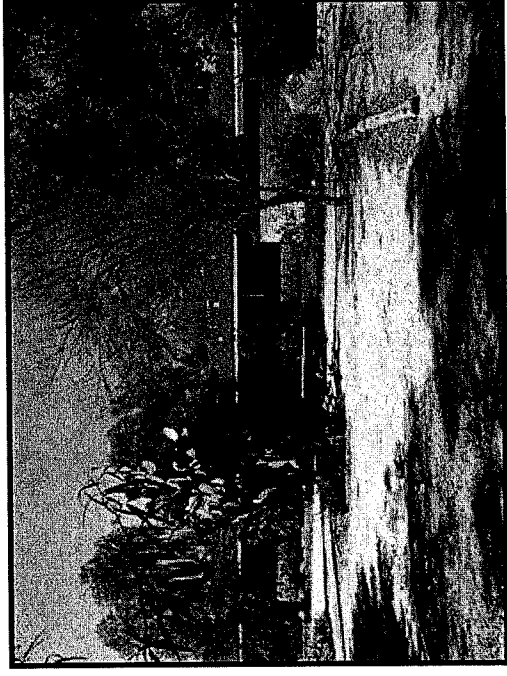


MAP 6
Aerial Map, Excerpt
(Section 14 and Surrounds)
(PCE 1954)

Aldea Linda Neighborhood.

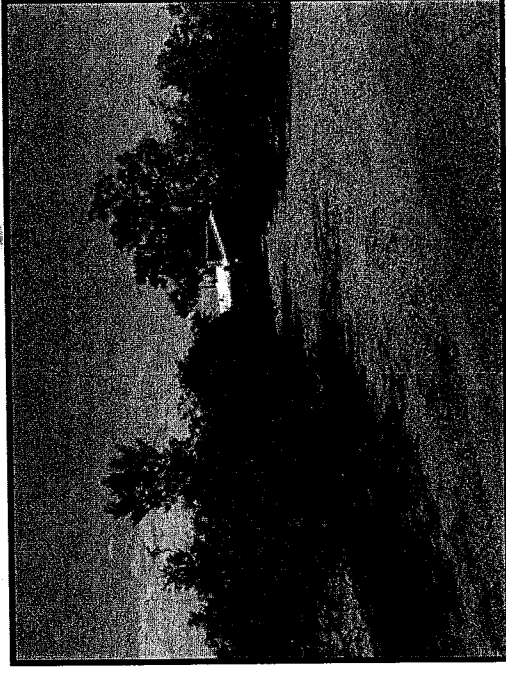


1. View along Calle Jabali showing typical streetscape.

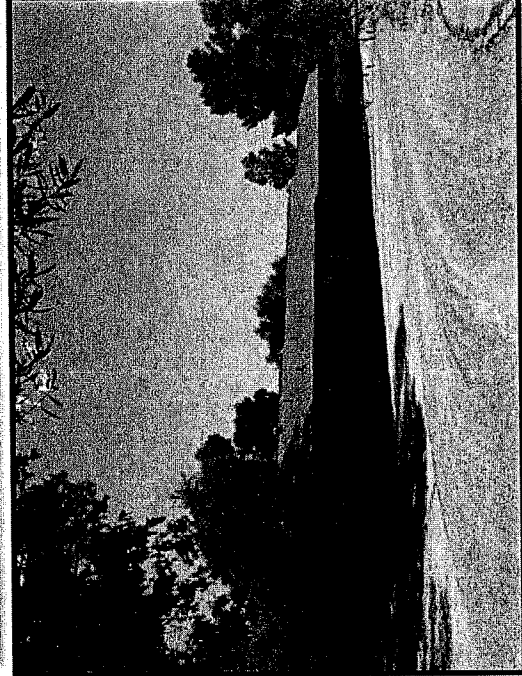


3. 4813 East Calle Jabali (#4B) - North

Tucson Vicinity



2. View from Calle Jabali towards typical entry drive showing natural desert vegetation along street and drive.

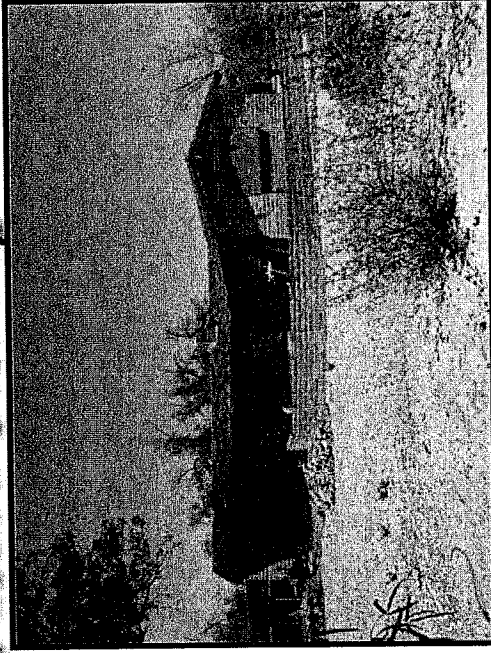


4. Typical Ranch style house at 4950 East Calle Jabali (#10B) Southwest

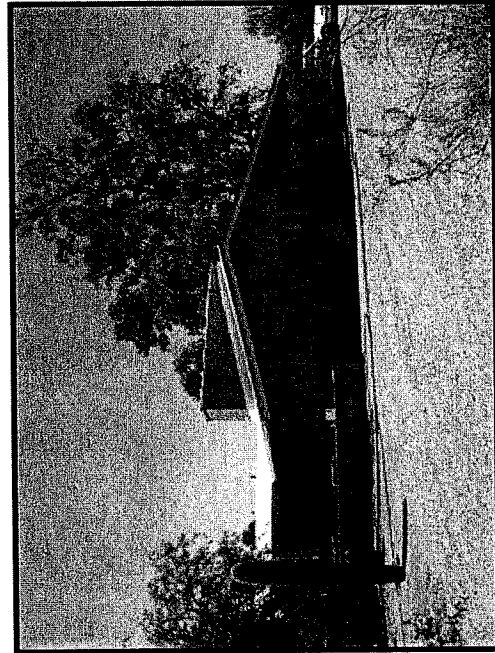
Aldea Linda Neighborhood, Tucson Vicinity



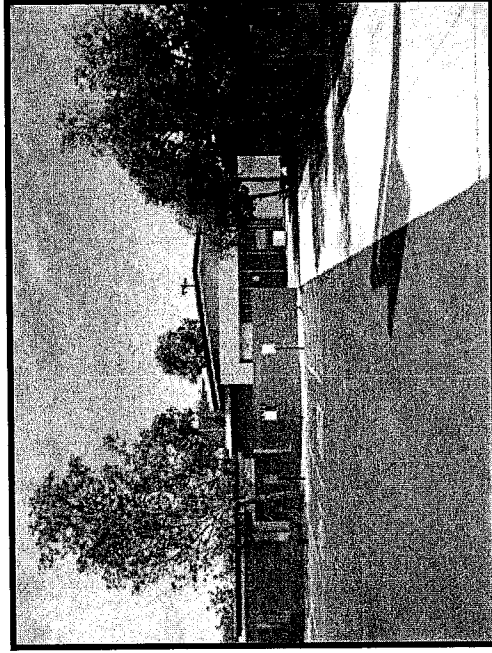
5. Unusual Ranch style house designed by Josias T Joesler - 4812 East Calle Jabali (#8B)- Southeast



6. Rancho Neo-Eclectic style house - 4817 Calle Jabali (#4A)- North



7. Typical Modern style house - 4848 E Calle Jabali - #8A - South

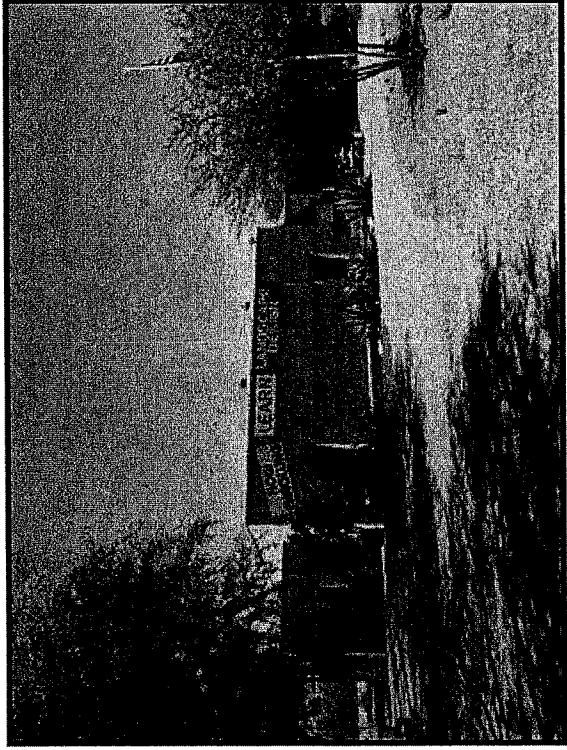


8. Modern Style Holland Hall, Unitarian Church - 4831 East 22 St (#15) - North

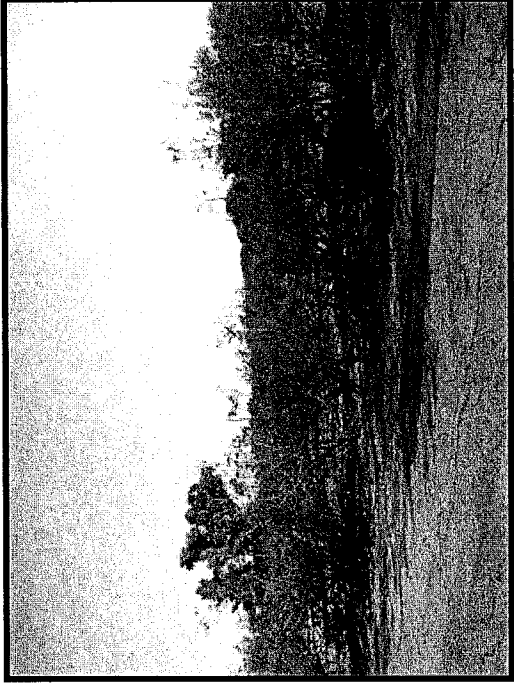
Aldea Linda Neighborhood, Tucson Vicinity



9. Sonoran Revival style house



10. Spanish Colonial Revival style Art School -
113 Swab Road (#6) - Northeast



11. View from Calle Jabali showing typical
natural desert vegetation - Southeast