

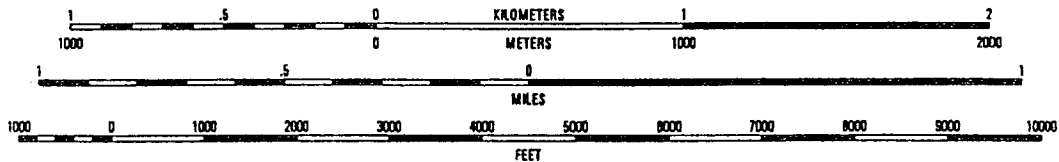
DISTRICT UTM'S

TUCSON, ARIZONA 7.5' MAP

- A 510162E/3563793N
- B 510973E/3563793N
- C 510973E/3563393N
- D 510362E/3563893N
- E 510362E/3563500N
- F 510362E/3563500N

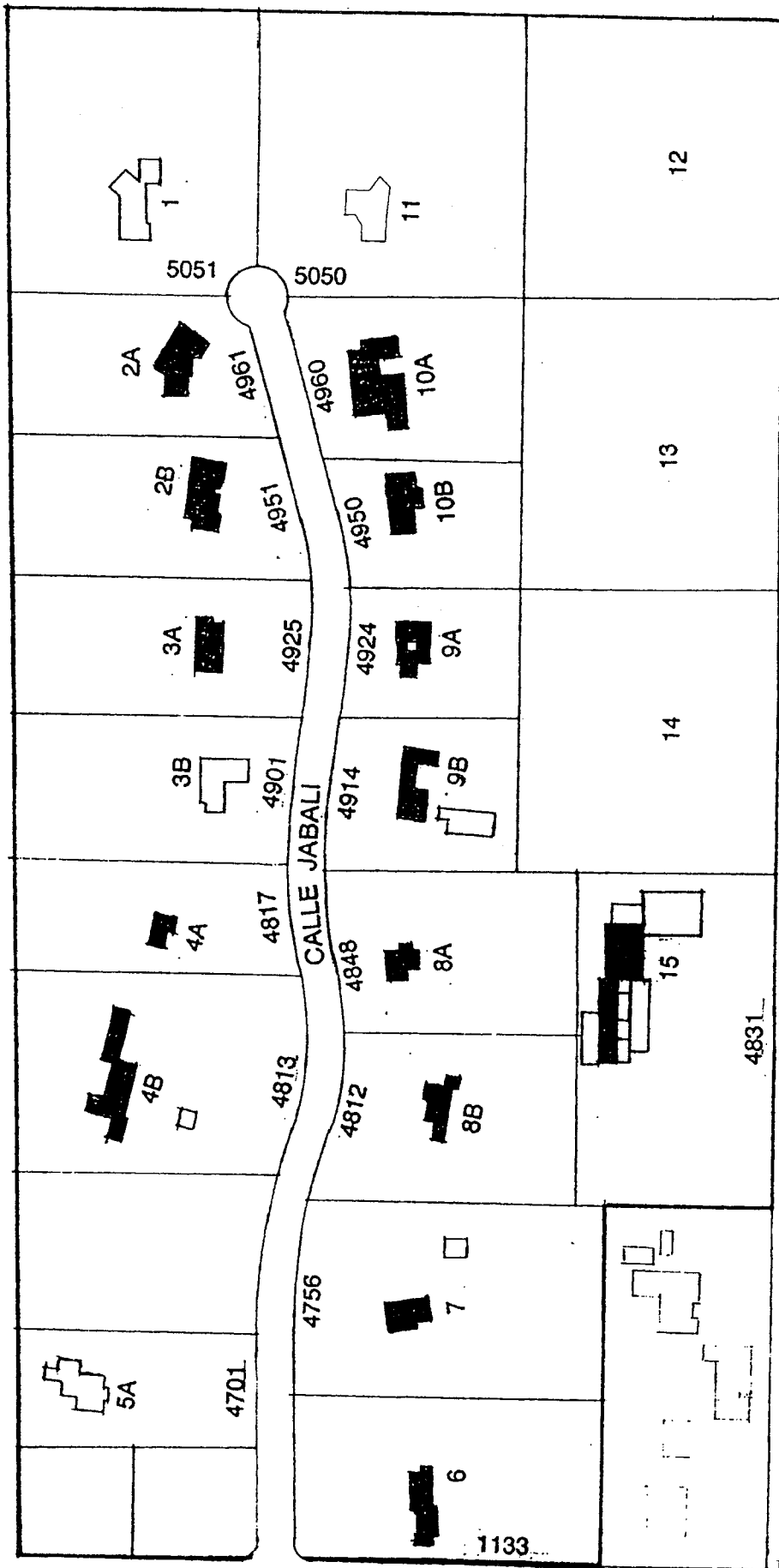
ALDEA LINDA
RESIDENTIAL HISTORIC DISTRICT
TUCSON, PIMA COUNTY, ARIZONA

SCALE 1:24 000



CONTOUR INTERVAL 10 FEET
NATIONAL GEODETIC VERTICAL DATUM OF 1929
TO CONVERT FROM FEET TO METERS, MULTIPLY BY 0.3048

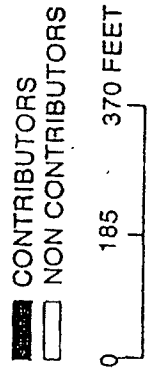
MAP 1
UTM references
(USGS 1996)



EAST TWENTY SECOND STREET

SOUTH SWAN ROAD

ALDEA LINDA

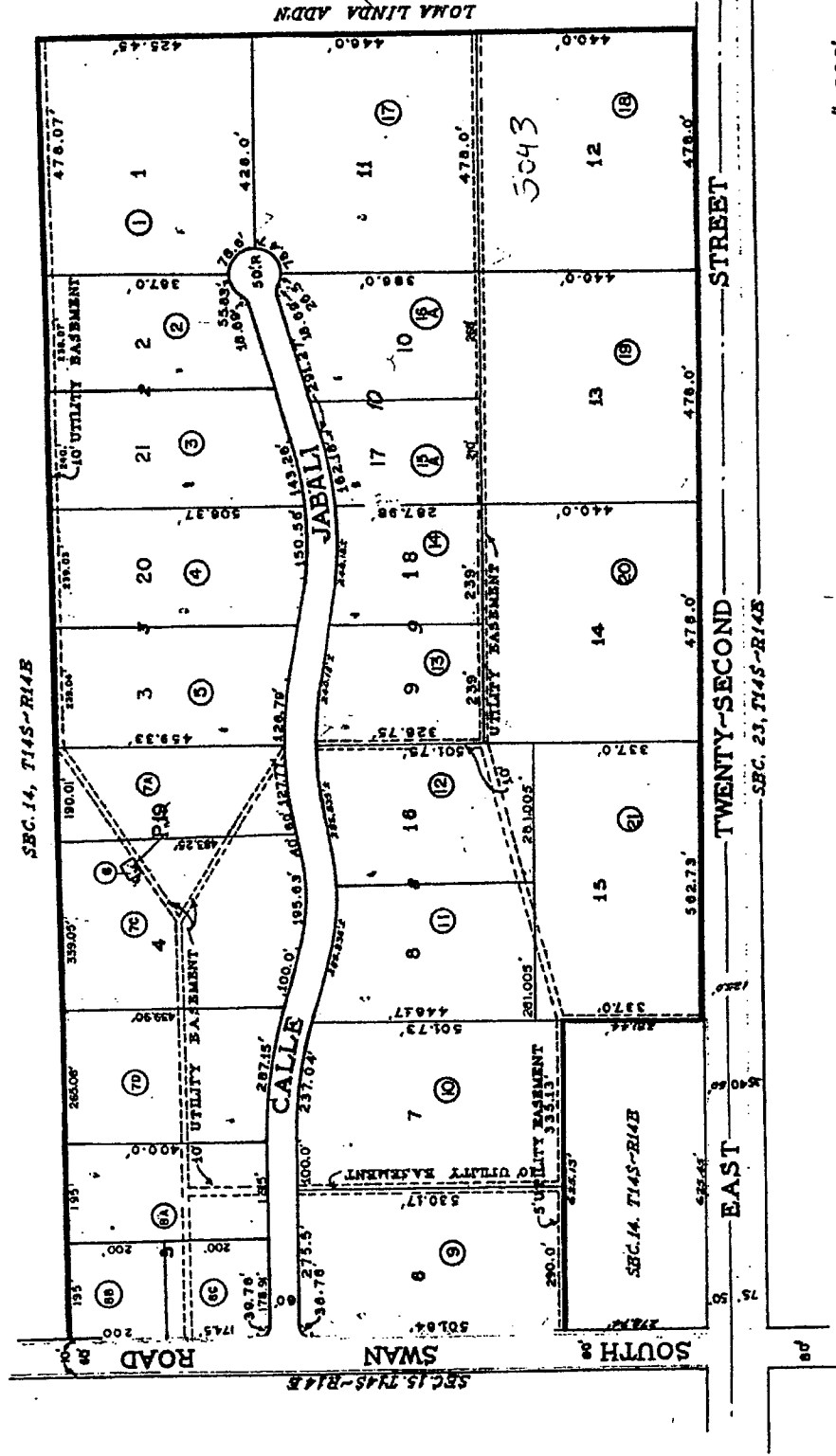


ASSESSOR'S RECORD MAP

ALDEA LINDA SUBDIVISION

128-13

1/1

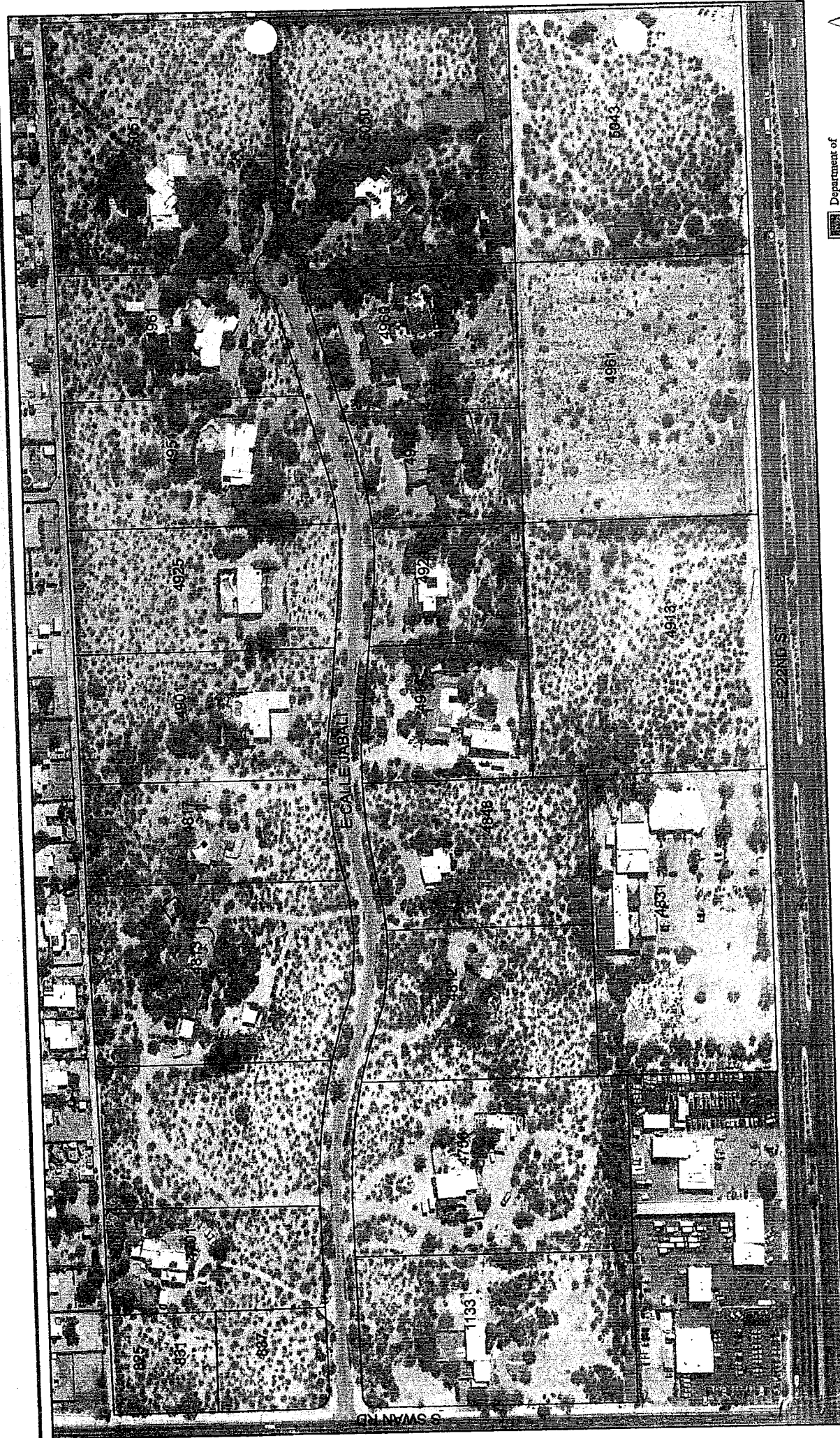


SCALE-1"=200'

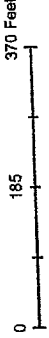
SEE BOOK 8 PAGE 53 M & P.
1982

MAP 3

Assessor's Record Map
(PCA 2007)



Department of
URBAN PLANNING
& DESIGN



Aldea Linda

MAP 4
Aerial Map
(COT Aerial 2007)

LOCATION



SECTION 14, T. 14 S., R. 14 E.

CERTIFICATION OF SURVEY
I hereby certify I completed the survey of property shown by this plat July 1947.

DEDICATION

The undersigned, hereby certifies that the lands described herein were donated to the public for the purpose of providing a public utility, and that the same are not subject to any other claim or interest, and that the same are not being offered for sale or lease, and that the same are not being offered for any other purpose.

J. P. ...
...

The property hereunder was subdivided into lots and blocks as shown on this plat by ...

APPROVALS
By ...
By ...

By ...
By ...

By ...
By ...

By ...
By ...

By ...
By ...

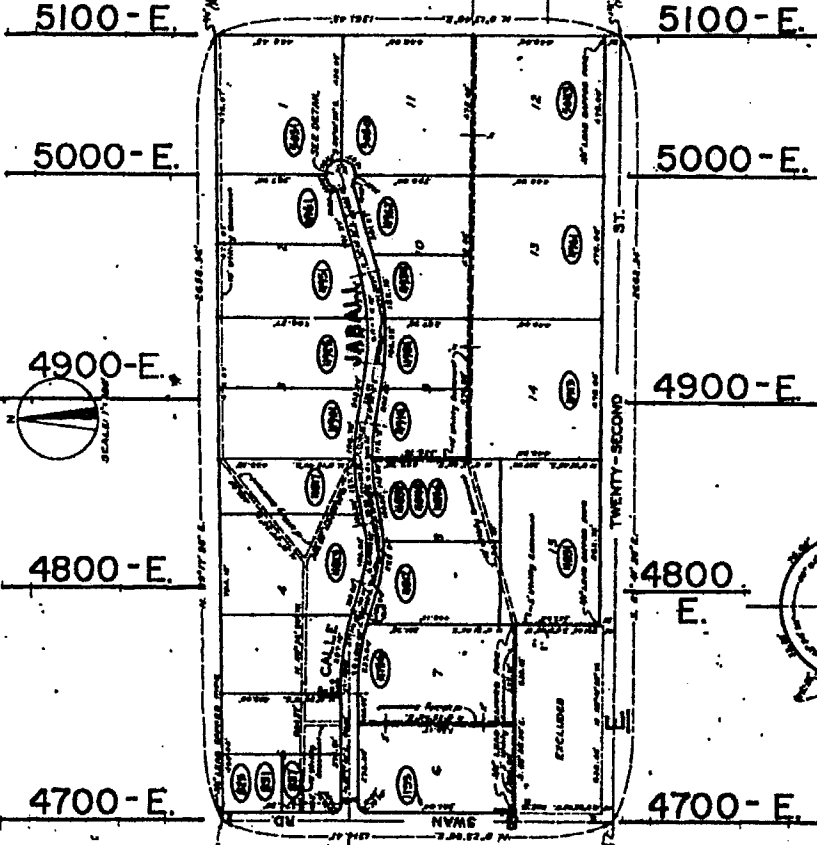
By ...
By ...

By ...
By ...

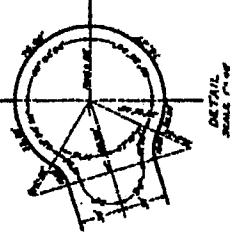
By ...
By ...

By ...
By ...

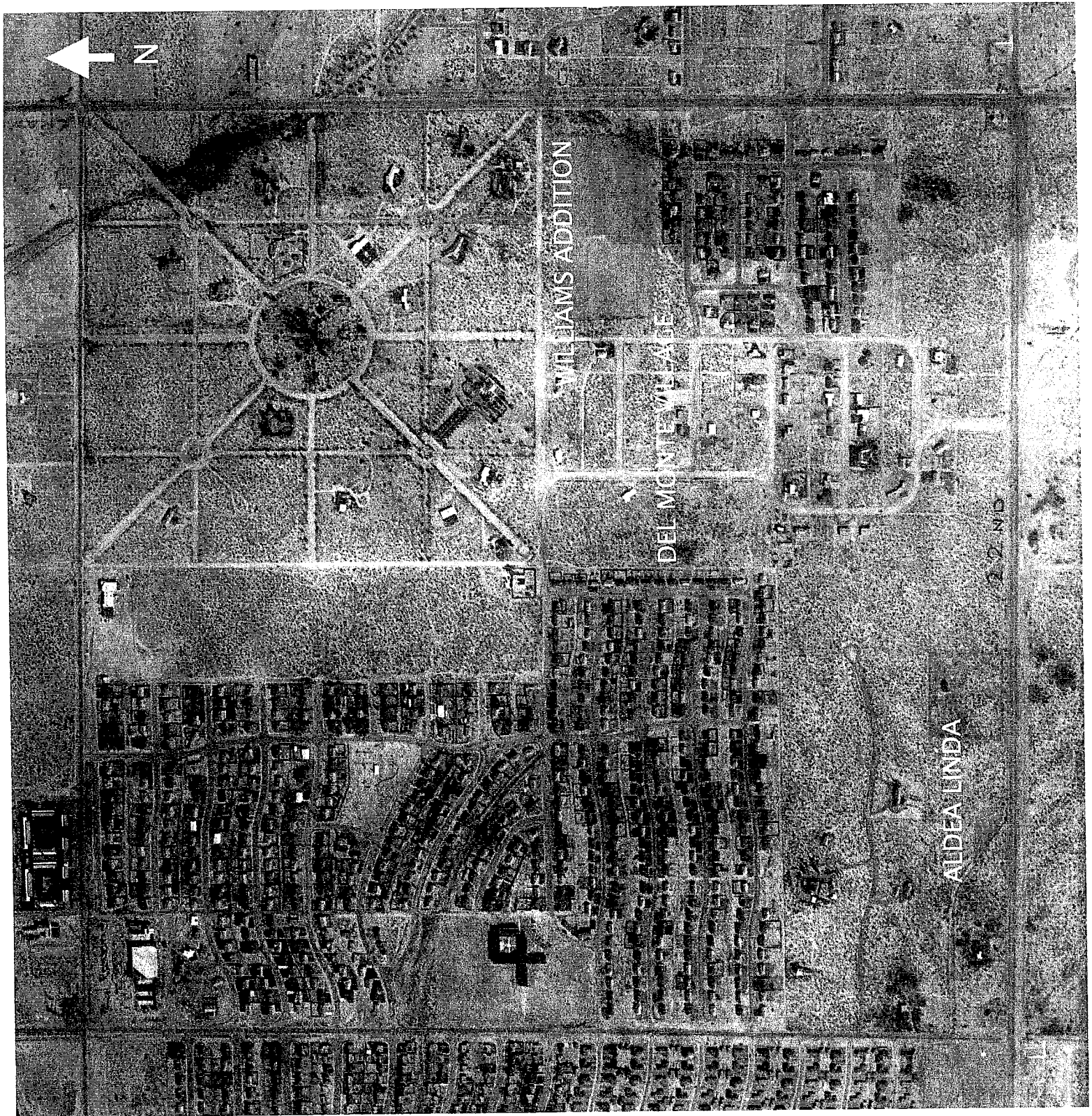
ALDEA LINDA SUBDIVISION
SITUATE IN
S 1/2 OF SW 1/4 SEC. 14, T. 14 S., R. 14 E.
G. S. R. B. & M.
PIMA COUNTY, ARIZONA
JULY 1947



CITY OF TUCSON
MAP 12
ZONE R-1



MAP 5
Plat Map
(PCR 1947)



MAP 6
Aerial Map, Excerpt
(Section 14 and Surrounds)
(PCE 1954)