

United States Department of the Interior  
National Park Service

# National Register of Historic Places Continuation Sheet

Section PHOTOGRAPHS Page 78Feldman's Historic District  
Pima County, Arizona

## APPLIES TO ALL PHOTOGRAPHS:

Feldman's Historic District

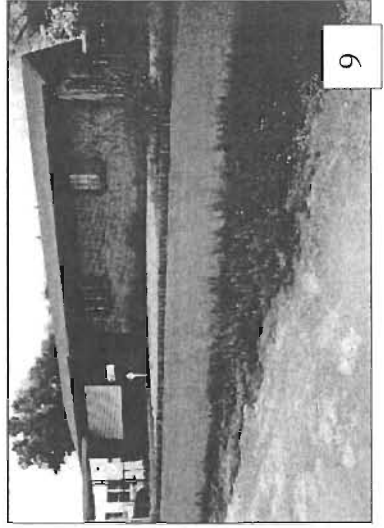
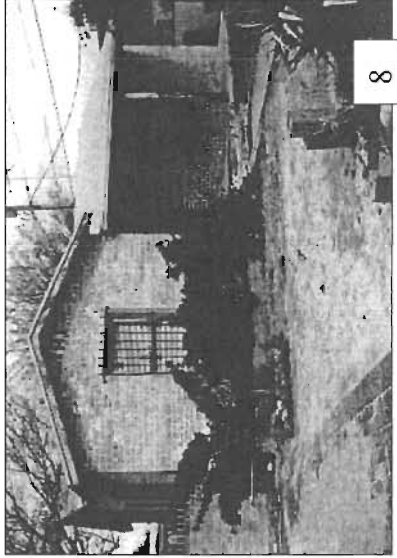
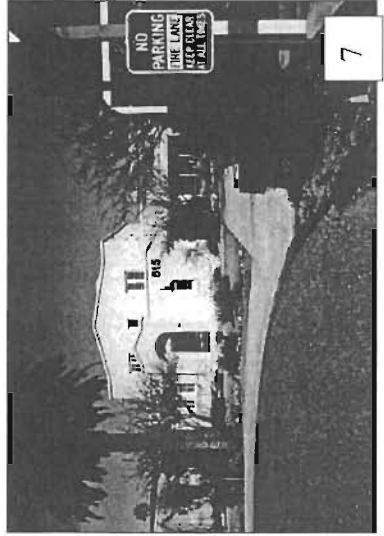
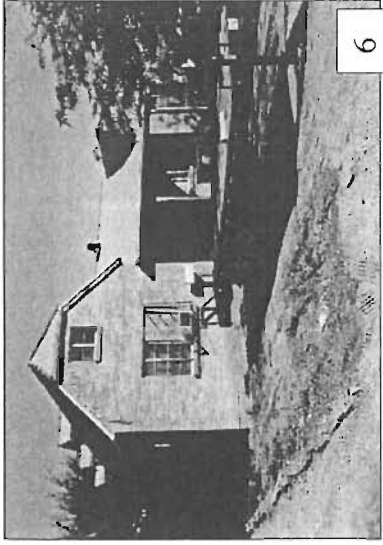
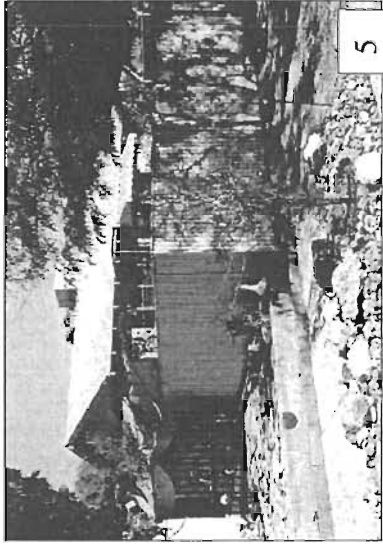
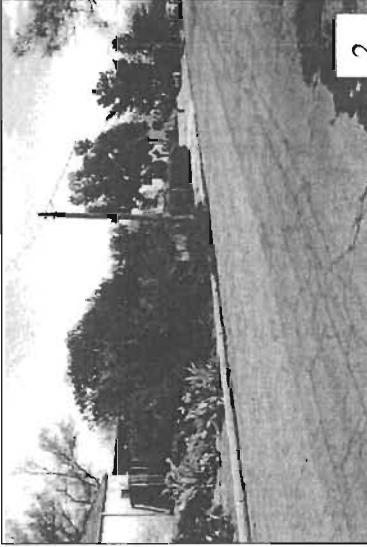
Tucson, Pima County, Arizona

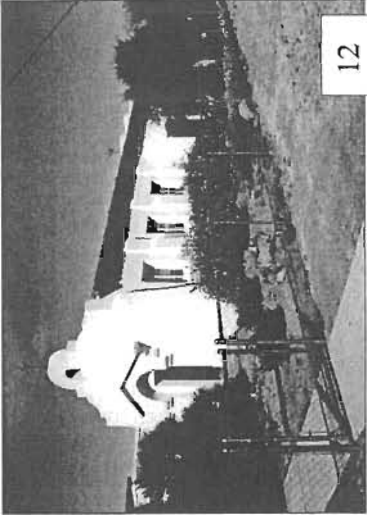
Metropolis Design Group (Robert Graham, Roberta Graham)

2003, 2004, 2005

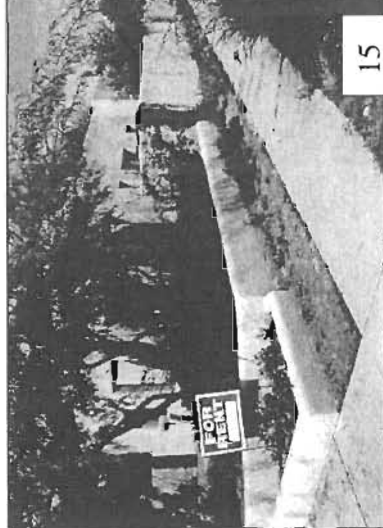
Negatives at State Historic Preservation Office, 1300 West Washington, Phoenix, Arizona 85007

Photo #	Inventory #	Address	View To	Neg. #	Description
	<b>Original Boundary</b>				
1	N/A	Tyndall at Drachman	NW	BB-36	Streetscape
2	N/A	4 <sup>th</sup> at Mabel	NE	AA-14	Streetscape
3	N/A	3 <sup>rd</sup> at Mabel	SE	AA-17	Streetscape
4	N/A	2 <sup>nd</sup> at Mabel	NE	AA-19	Streetscape
5	SD-88	515 E. Mabel	NE	A-3	Property previously Noncontributing, now considered Contributing because it is easily visible over fence
6	SD-251	1222 N. 4 <sup>th</sup>	SE	C-18	Tudor Style house, 1948, previously Noncontributing, now considered Contributing
7	SD-1A	St. Luke's	NW	AA-23	Major modification to formerly Contributing resource
8	SD-247	421 E. Helen	NW	AA-9	First Ranch Style home in neighborhood, 1941
9	SD-73	1314 N. 4 <sup>th</sup>	NE	AA-13	Ranch Style house, 1955
10	SD-168	828 E. Mabel	SE	AA-4	Early Ranch style house, 1949
11	SD-268	307 E. Helen	NE	BB-24	Church, 1951
12	SD-1B	St. Luke's Chapel	NW	AA-29	Contributing building on the same property as altered, Noncontributing building (see photo 7)
13	SD-135	1333 Tyndall	NW	BB-35	Major Noncontributing building (apartments)
14	SD-352	445 E. Speedway	NW	AA-7	Major additions adjacent to Contributing resource
15	SD-83	545 E. Mabel	NW	AA-18	Altered residence, 1928
	<b>Feldman's Update</b>				
16	N/A	N. Tyndall Ave.	W	D-34	WPA 1938 Curb stamp with street name
17	F-517 (r)	215 E. Adams St.	NW	D-20	Streetscape
18	F-579 (r)	225 E. Drachman St.	NW	D-18	Streetscape, Contributing and Noncontributing
19	F-643	135 E. Mabel St.	NW	D-16	Bungalow Style, circa 1915
20	F-634	1430 N. 1st Ave.	E	D-11	Bungalow Style, 1925, some alterations
21	F-644	127 E. Mabel St.	NE	D-17	Spanish Eclectic Style, 1925
22	F-594	333 E. Drachman St.	NW	D-25	Ranch Style variant, American International, 1953
23	F-515	223 E. Adams St.	NW	D-21	Transitional, or Classic, Ranch Style house, 1955
24	F-597 (l) F-596 (r)	410-412 E. Adams St. 402 E. Adams St.	SW	D-2	Ranch Style variant Sp. Eclectic influence, 1948, 1951 Ranch Style variant Sp. Eclectic influence, 1948
25	F-647	1325-33 N. 2 <sup>nd</sup> Ave.	NW	D-26	Ranch Style variant Sp. Eclectic influence, 1949-1956
26	F-620	628 E. Adams St.	SSW	D-30	Modern Romanesque Revival, 1955
27	F-632 (r) F-633 (l)	1400-06 N. 1 <sup>st</sup> Ave. 1412 N/ 1 <sup>st</sup> Ave.	NE	D-13	Modern Commercial, 1960 Modern Commercial, 1948

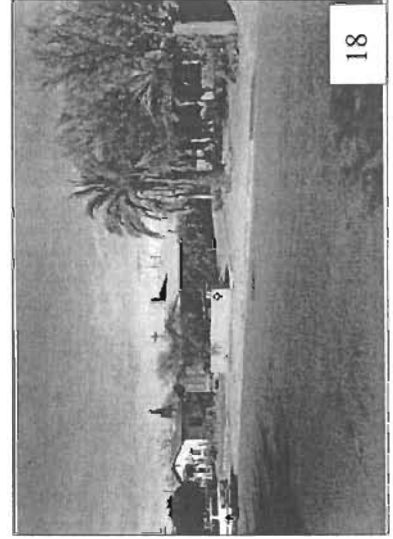




12



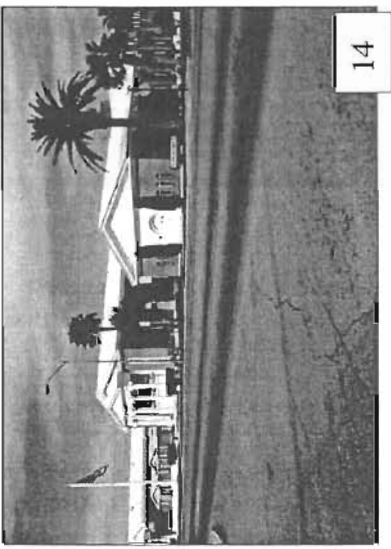
15



18



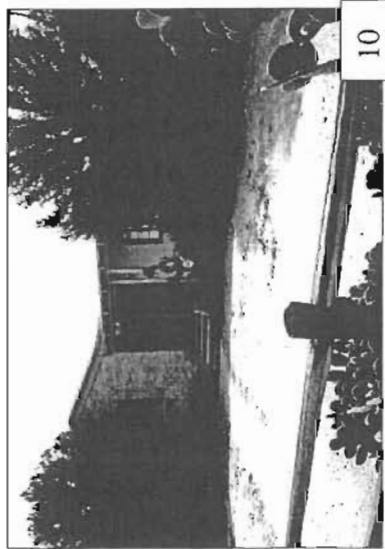
11



14



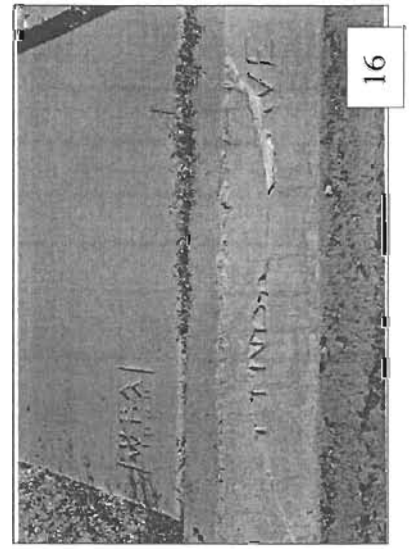
17



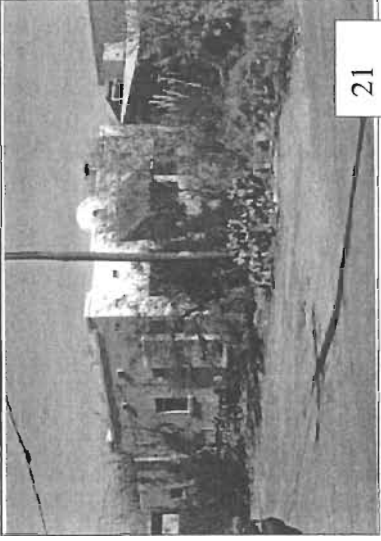
10



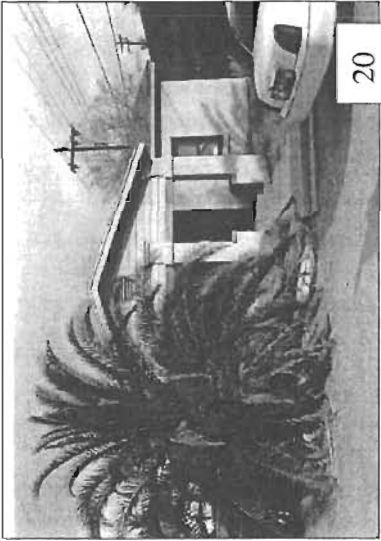
13



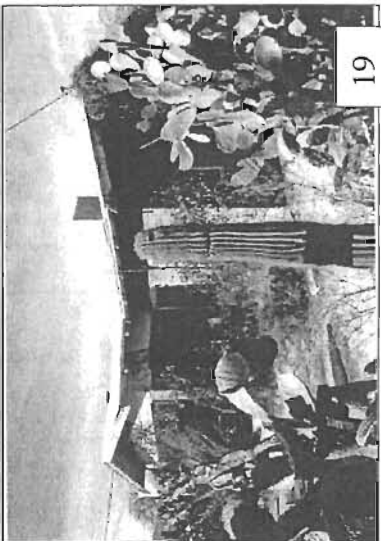
16



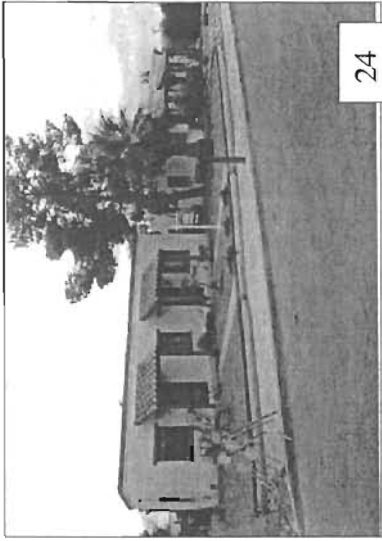
21



20



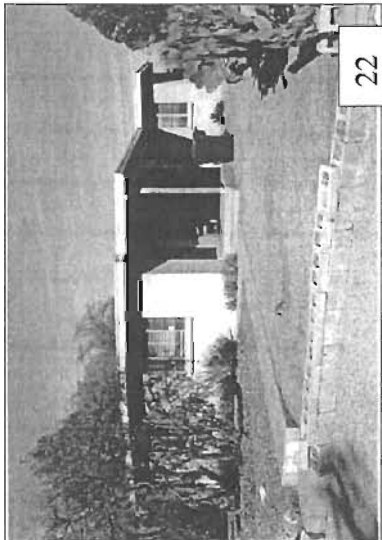
19



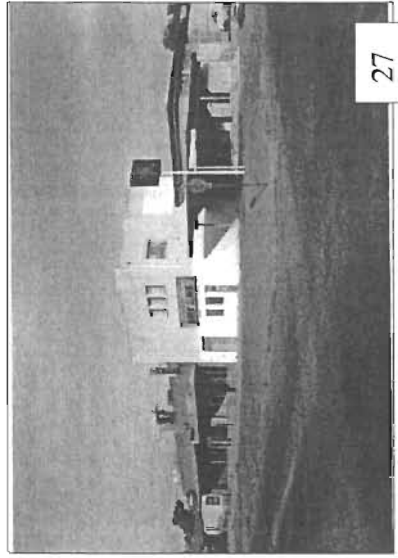
24



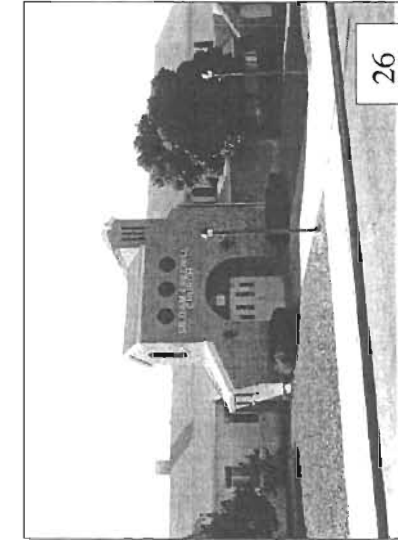
23



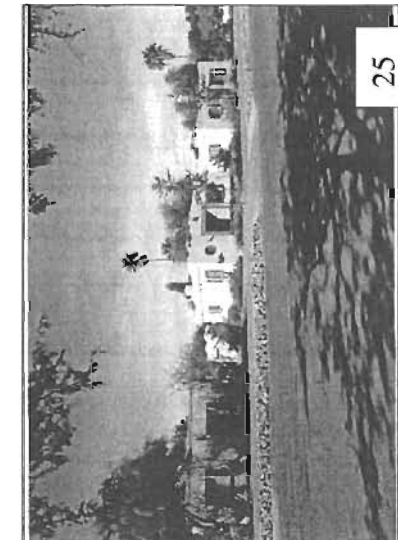
22



27



26



25



