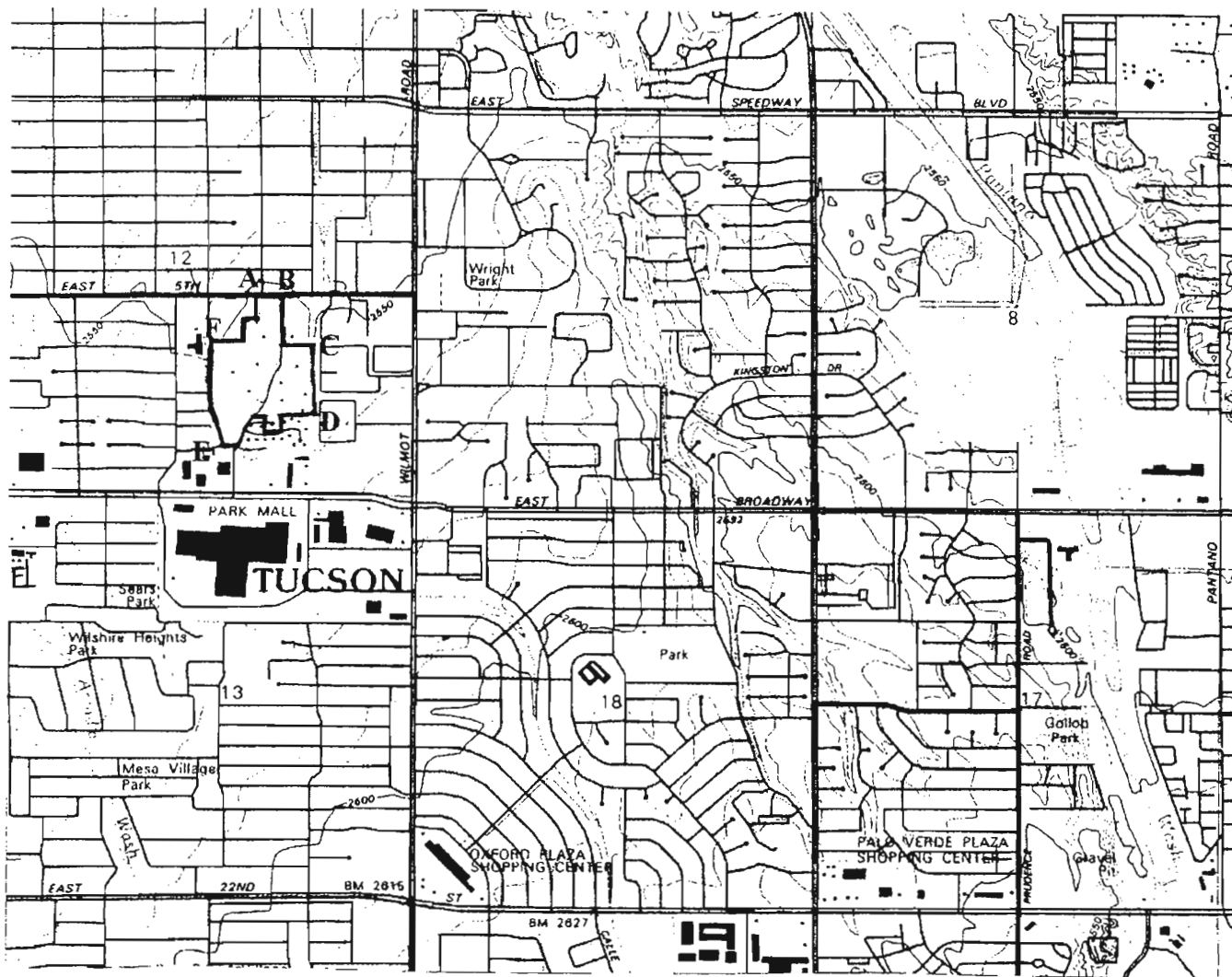


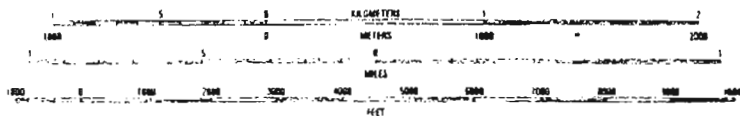
- Contributors
- Non-Contributors

N


 0 200'
INDIAN HOUSE COMMUNITY
HISTORIC DISTRICT



SCALE 1:24 000



CONTOUR INTERVAL 10 FEET
 NATIONAL GEODETTIC VERTICAL DATUM OF 1929
 TO CONVERT FEET TO METERS MULTIPLY BY 0.3048
 TO CONVERT METERS TO FEET MULTIPLY BY 3.2808

Produced by the United States Geological Survey
 Control by USGS and NOS/NOAA
 Compiled from imagery dated 1954. Revised from
 imagery dated 1992. PLSS and survey control
 current as of 1981. Contours and elevations
 current as of 1957. Map edited 1995

Tucson, Arizona 7.5' Map
 Indian House Community
 Residential Historic District
 Tucson, Pima County, Arizona

DISTRICT UTM'S

- A 12/512725E/3565830N
- B 12/512825E/3565830N
- C 12/513000E/3565625N
- D 12/513000E/3565330N
- E 12/512610E/3565275N
- F 12/512565E/3565660N

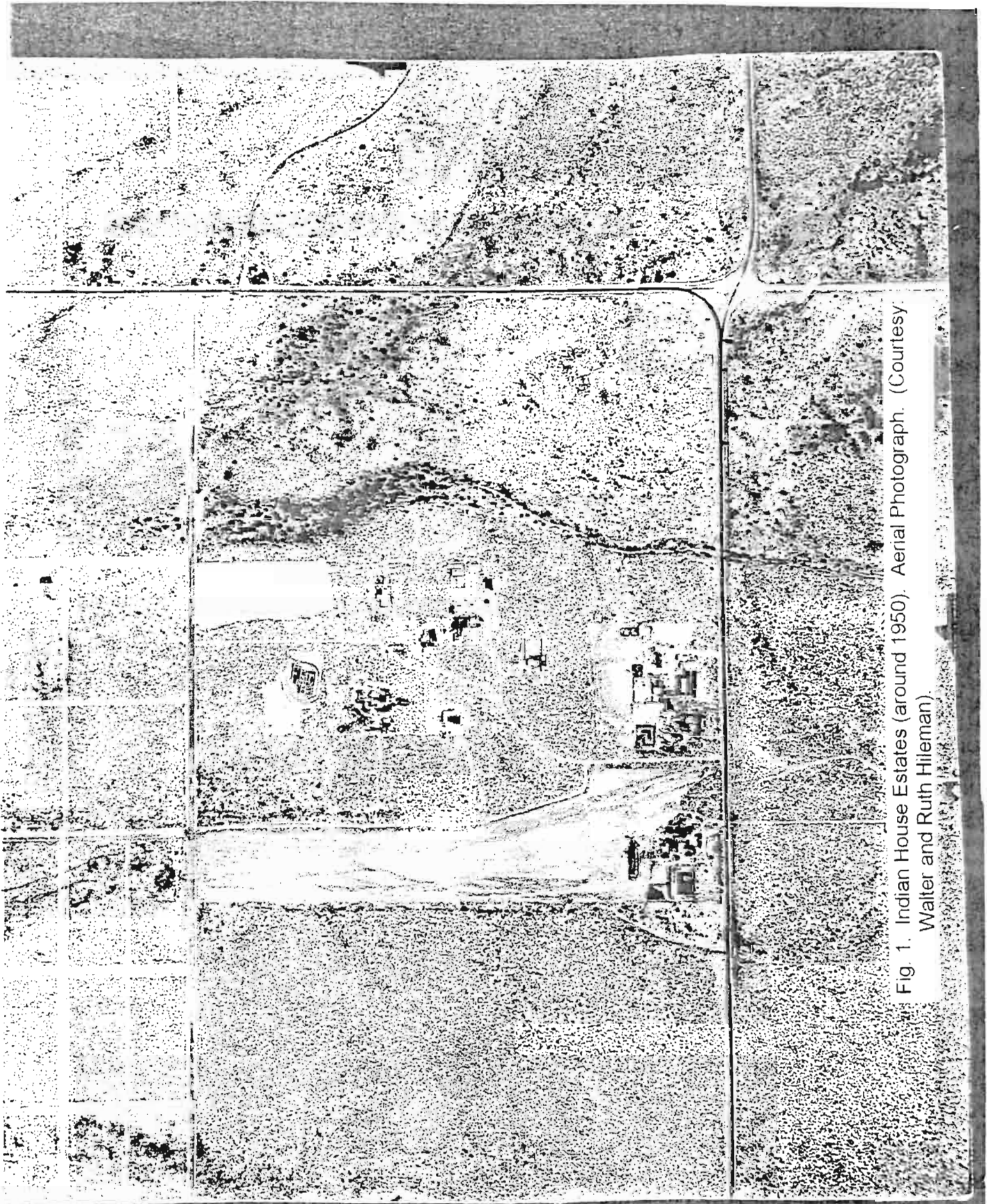


Fig. 1. Indian House Estates (around 1950). Aerial Photograph. (Courtesy Walter and Ruth Hileman).

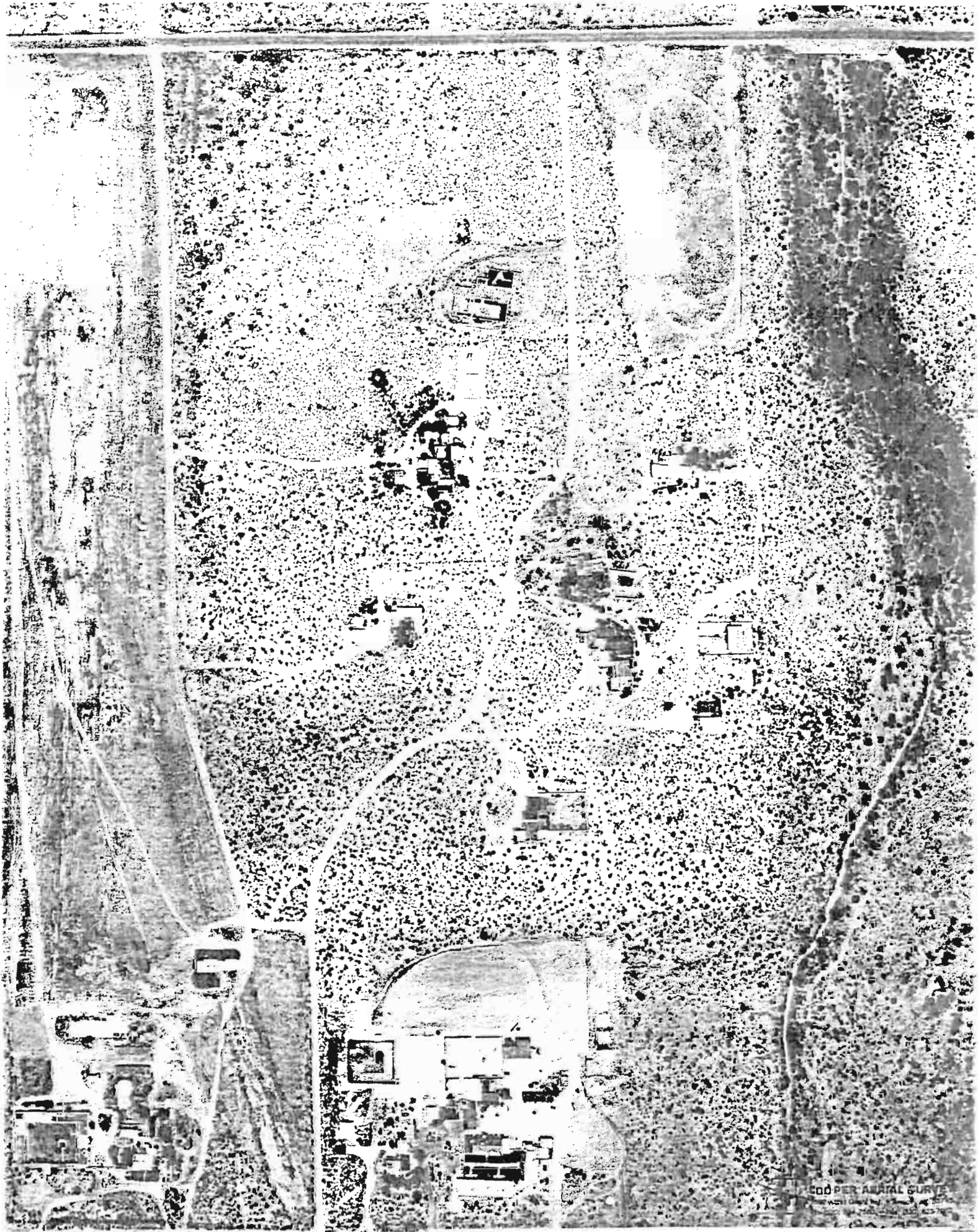


Fig. 2. Indian House Estates (1953). Aerial Photograph.
(Courtesy: Cooper's Aerial)

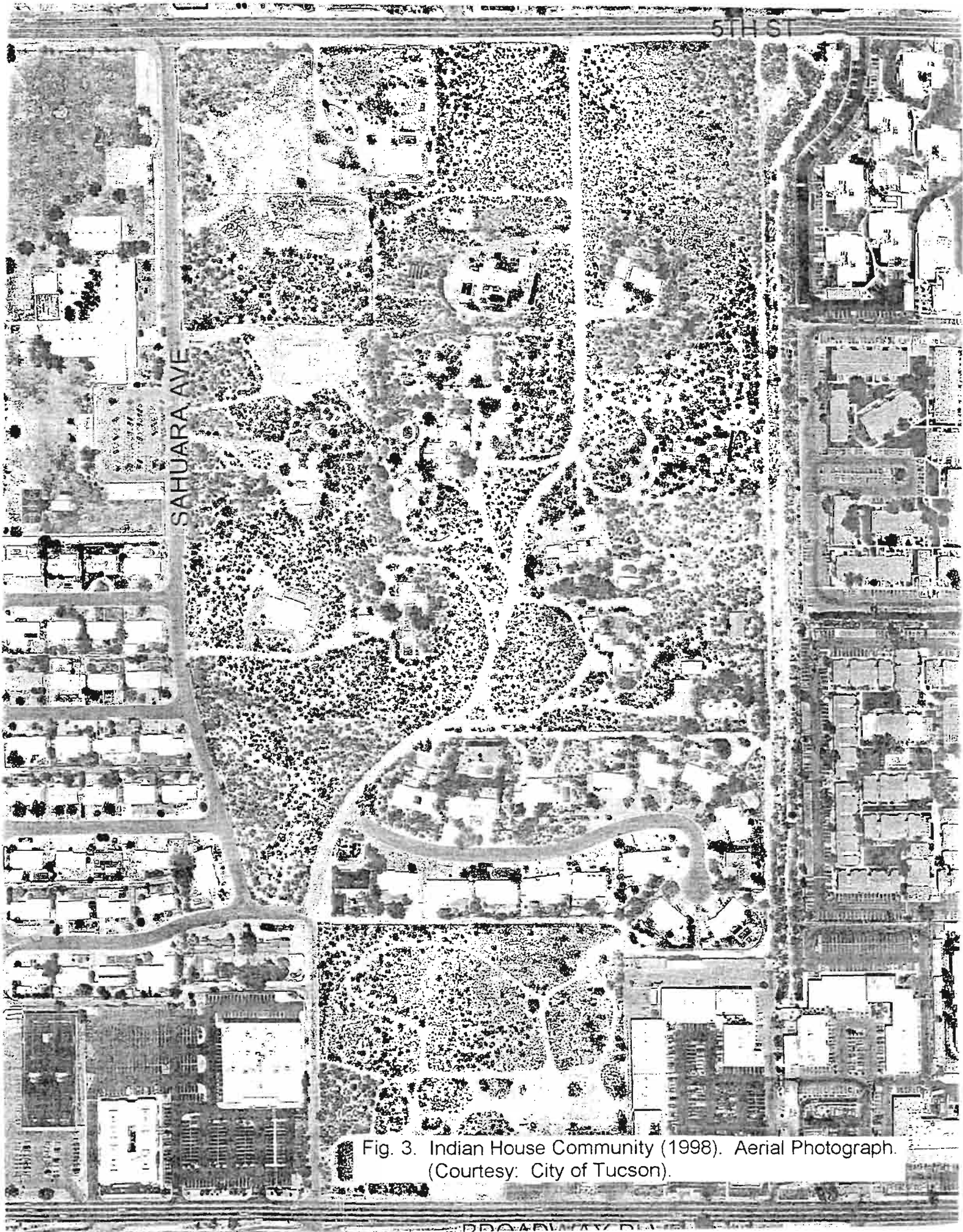


Fig. 3. Indian House Community (1998). Aerial Photograph.
(Courtesy: City of Tucson).