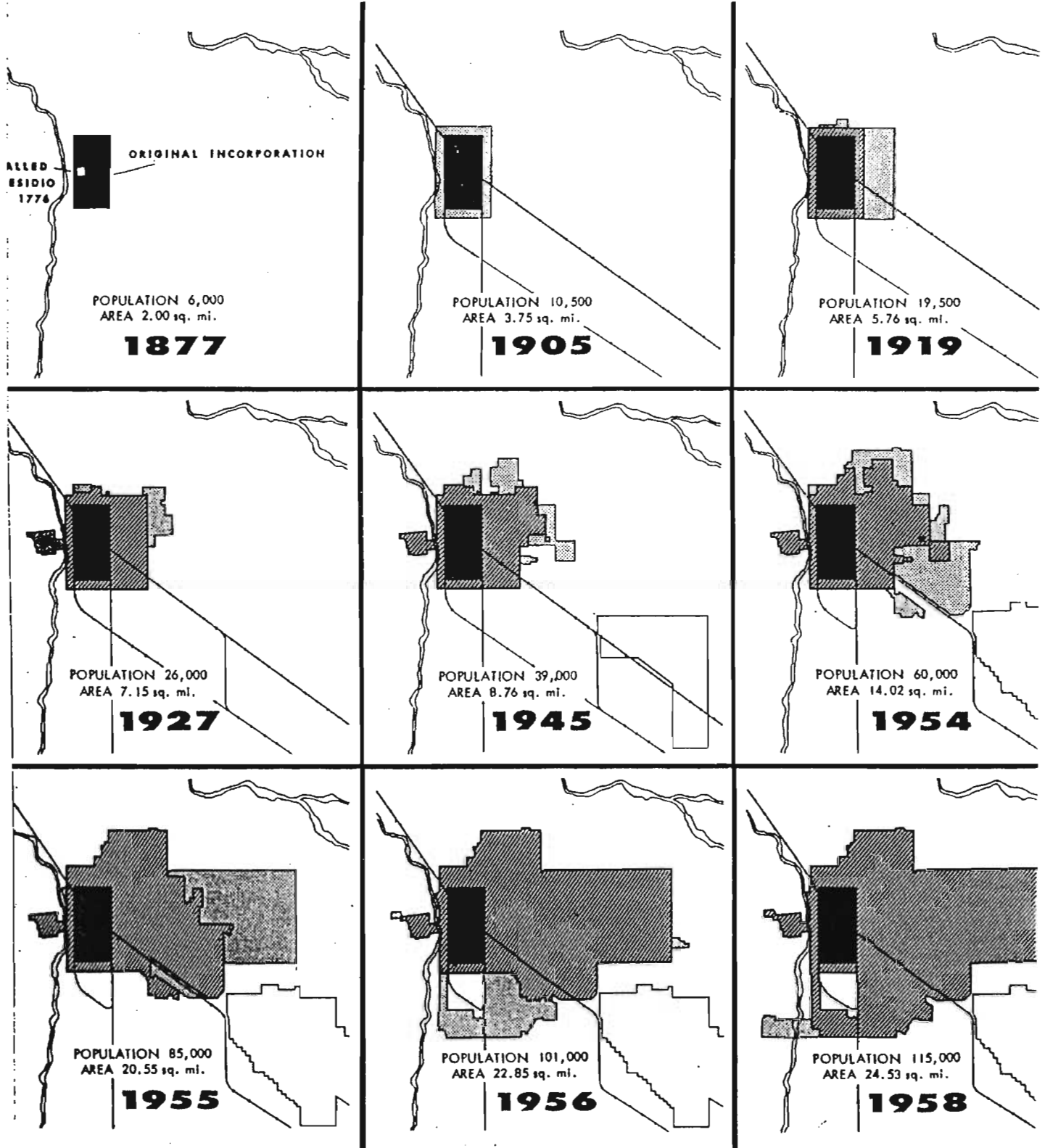
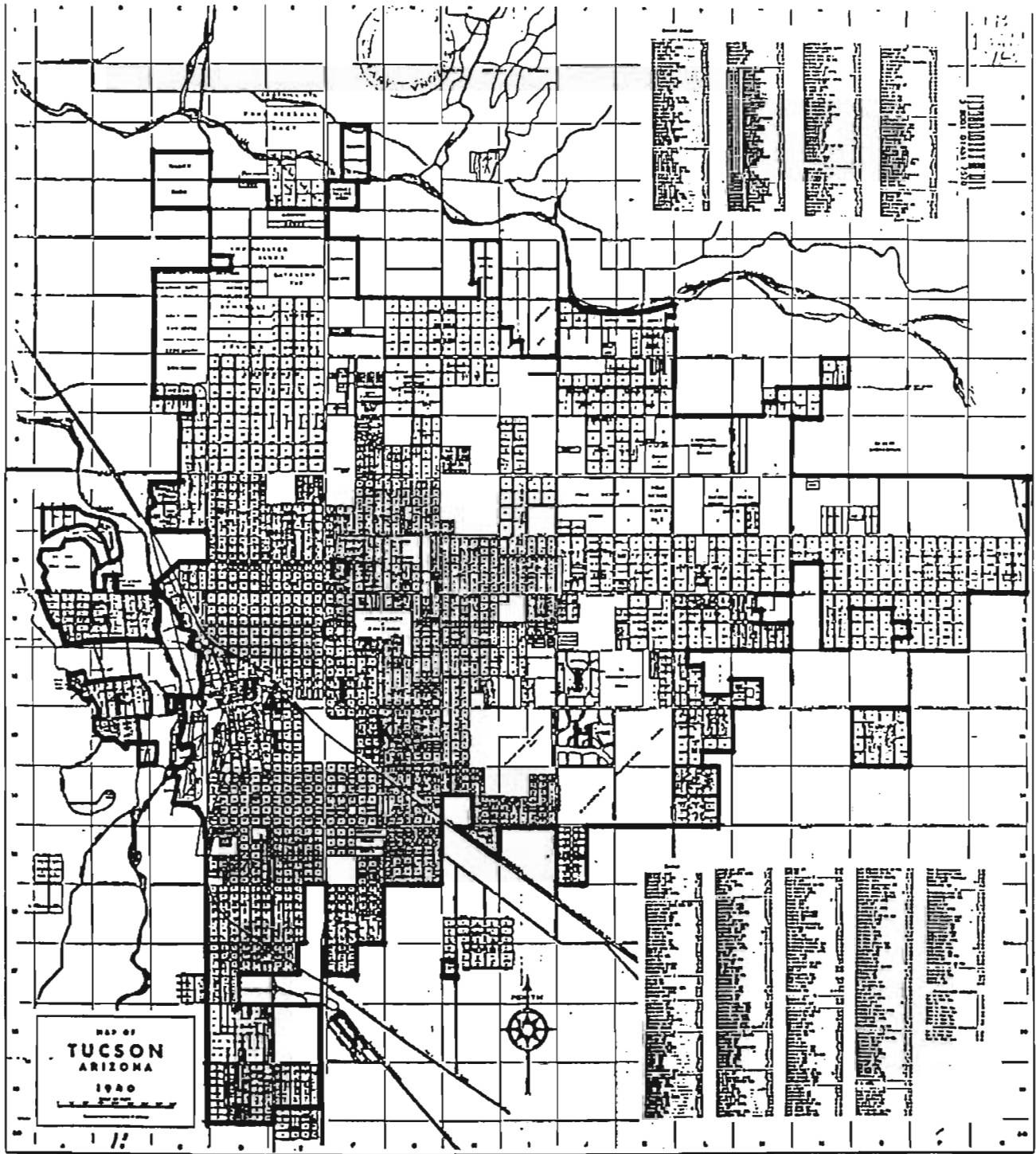


- Menlo Park Neighborhood
- A Sentinel Peak
- B St. Mary's Hospital
- C CBD
- D Convento Site

GROWTH OF THE CITY OF TUCSON

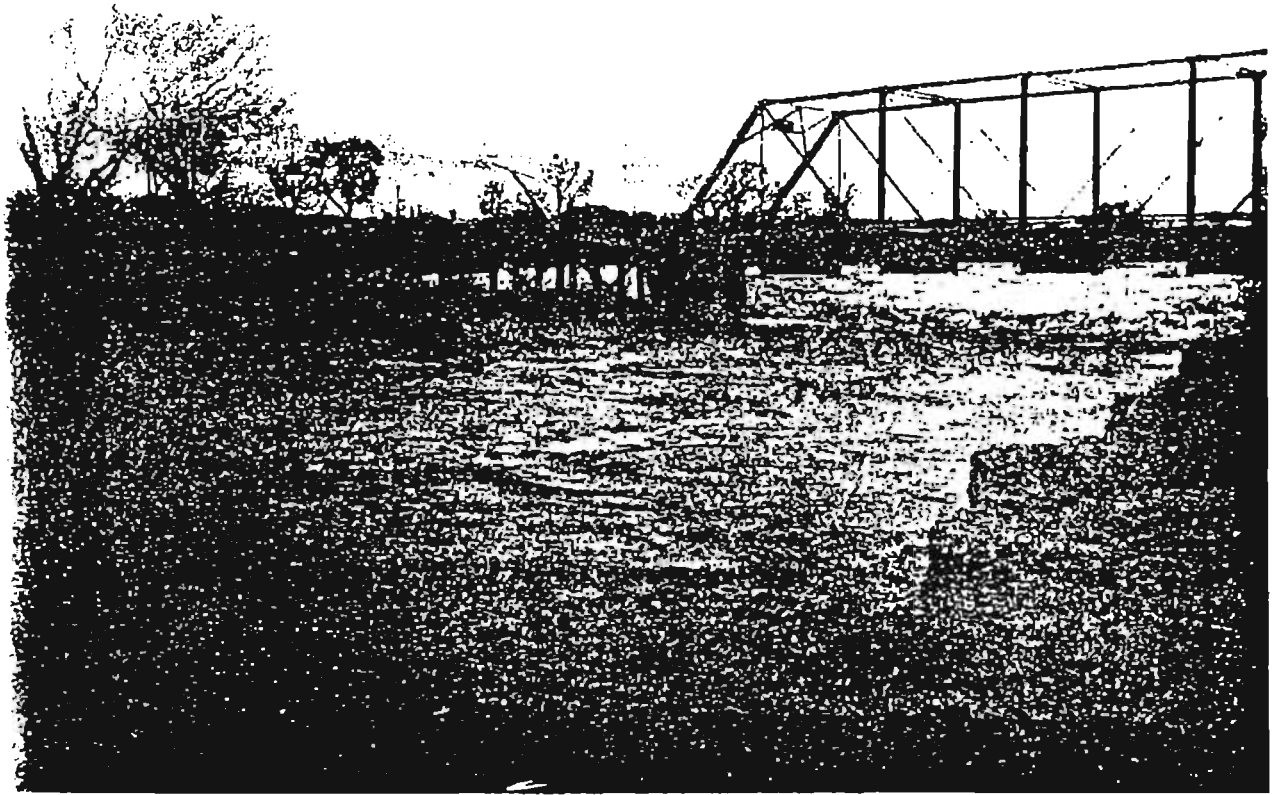


Eastward Expansion, the Preferred Orientation of Growth
in Tucson

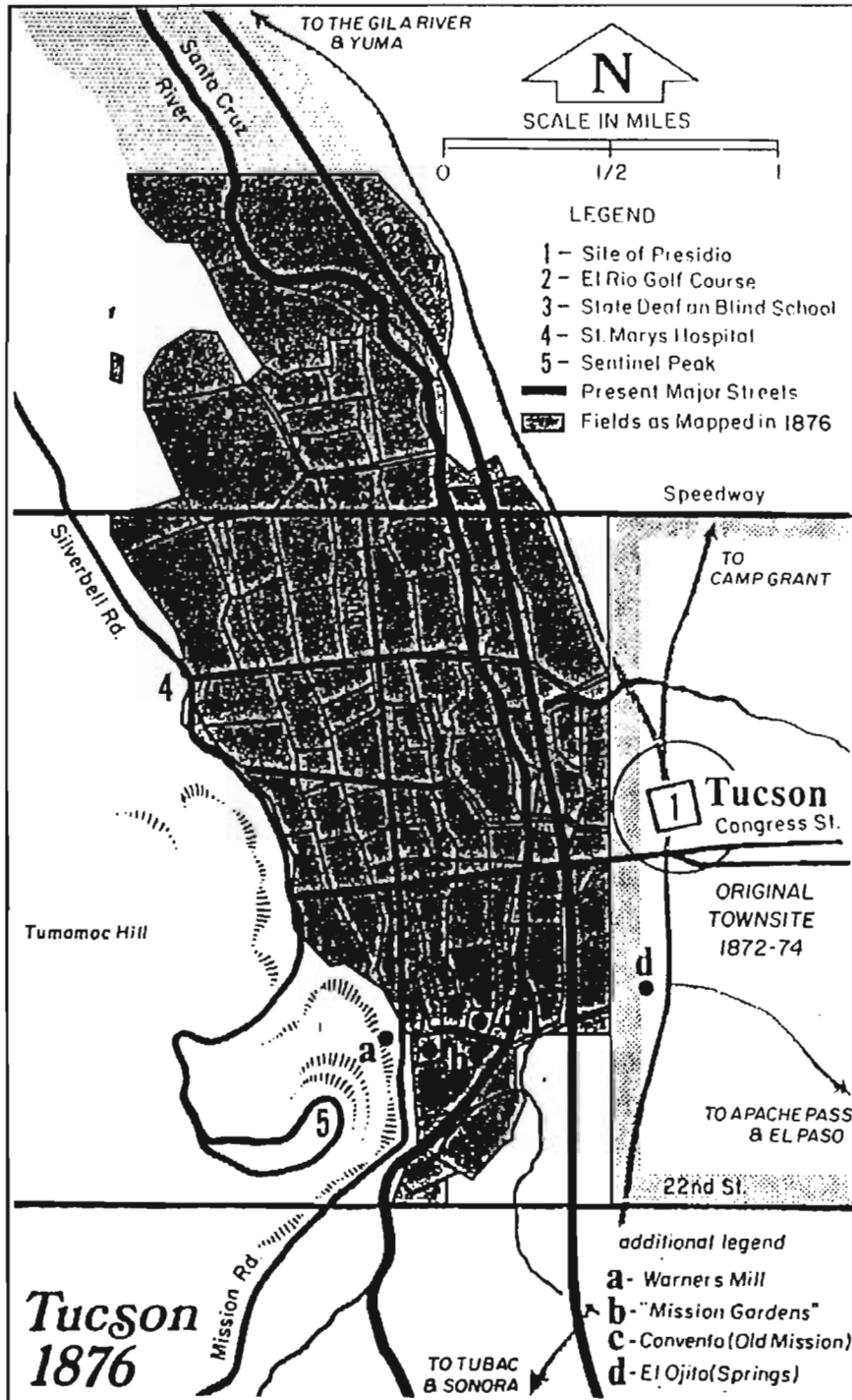


DISTRIBUTED BY
TUCSON CHAMBER OF COMMERCE

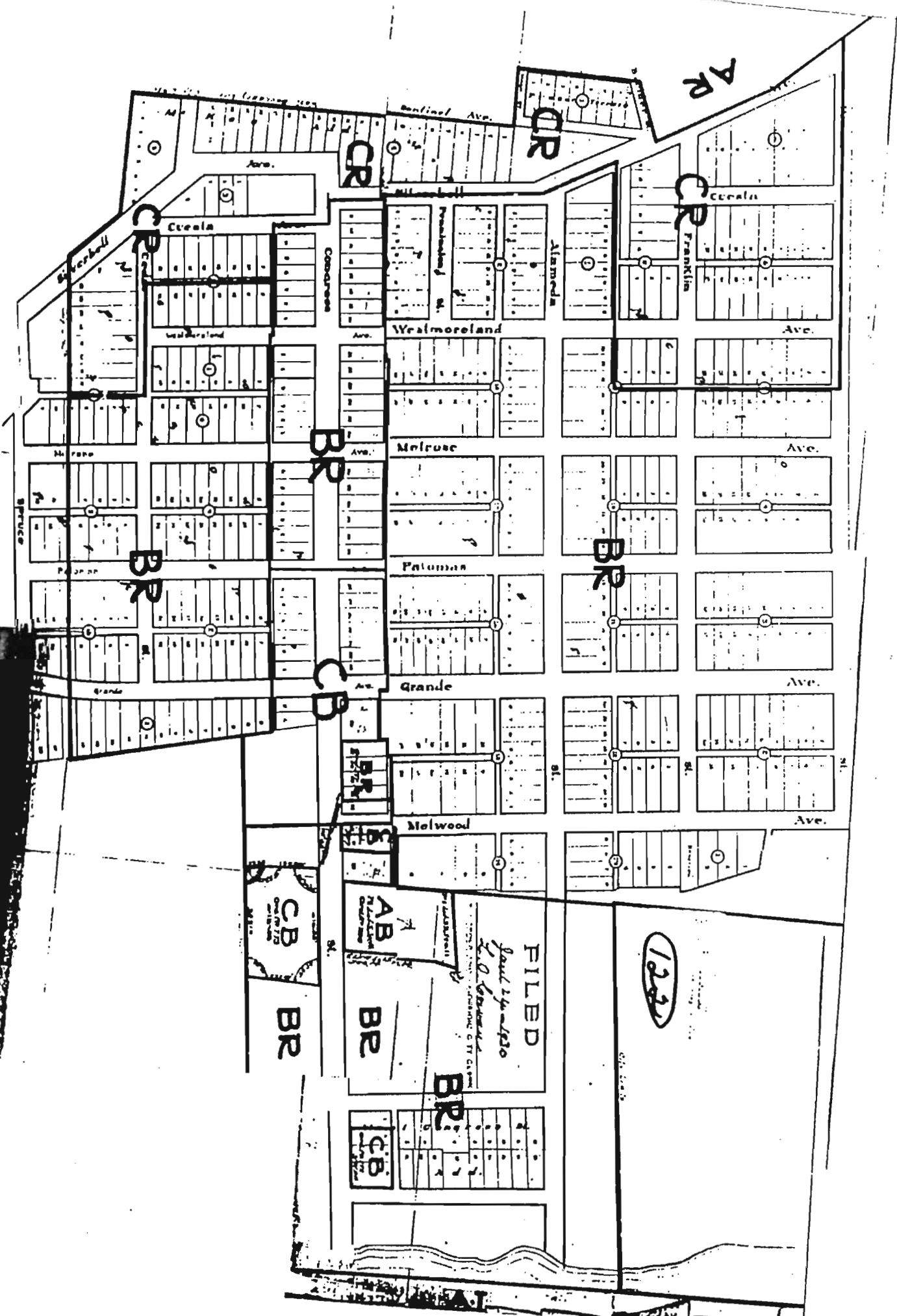
- | | | |
|-----------------------------|-----------------------------|-----------------------------|
| A CBD | E Armory Park | I El Encanto |
| B Goldschmidt's Add. | F Menlo Park | J Reicher's Addition |
| C Buell's Addition | G El Rio Subdivision | K University Heights |
| D Feldman's Addition | H Colonia Solana | |



The Flood of 1916 Showing the Destroyed Congress Street Bridge



4.3 Tucson's Fields in 1876



AR

CR

CR

CR

BR

BR

BR

CB

AB

BR

BR

BR

CB

1222

FILED

Jan 24 1930

City of San Francisco

City Clerk

City of San Francisco

City of San Francisco

City of San Francisco

City of San Francisco

City of San Francisco

City of San Francisco

City of San Francisco

City of San Francisco

City of San Francisco

City of San Francisco

City of San Francisco

City of San Francisco

City of San Francisco

City of San Francisco

SPRUCE

Benlual Ave.

Jana.

Cereola

Westmoreland

Melrose

Palomas

Grande

Melwood

AB

BR

CB

CB

CB

CB

Alameda

Franklin

Westmoreland

Melrose

Palomas

Grande

Melwood

AB

BR

CB

CB

CB

CB

CB

CB

CB

Alameda

Franklin

Westmoreland

Melrose

Palomas

Grande

Melwood

AB

BR

CB

CB

CB

CB

CB

CB

CB

Alameda

Franklin

Westmoreland

Melrose

Palomas

Grande

Melwood

AB

BR

CB

CB

CB

CB

CB

CB

CB

Alameda

Franklin

Westmoreland

Melrose

Palomas

Grande

Melwood

AB

BR

CB

CB

CB

CB

CB

CB

CB

Alameda

Franklin

Westmoreland

Melrose

Palomas

Grande

Melwood

AB

BR

CB

CB

CB

CB

CB

CB

CB

Alameda

Franklin

Westmoreland

Melrose

Palomas

Grande

Melwood

AB

BR

CB

CB

CB

CB

CB

CB

CB

Alameda

Franklin

Westmoreland

Melrose

Palomas

Grande

Melwood

AB

BR

CB

CB

CB

CB

CB

CB

CB

Alameda

Franklin

Westmoreland

Melrose

Palomas

Grande

Melwood

AB

BR

CB

CB

CB

CB

CB

CB

CB

Alameda

Franklin

Westmoreland

Melrose

Palomas

Grande

Melwood

AB

BR

CB

CB

CB

CB

CB

CB

CB

Alameda

Franklin

Westmoreland

Melrose

Palomas

Grande

Melwood

AB

BR

CB

CB

CB

CB

CB

CB

CB

Alameda

Franklin

Westmoreland

Melrose

Palomas

Grande

Melwood

AB

BR

CB

CB

CB

CB

CB

CB

CB

Alameda

Franklin

Westmoreland

Melrose

Palomas

Grande

Melwood

AB

BR

CB

CB

CB

CB

CB

CB

CB

Alameda

Franklin

Westmoreland

Melrose

Palomas

Grande

Melwood

AB

BR

CB

CB

CB

CB

CB

CB

CB

Alameda

Franklin

Westmoreland

Melrose

Palomas

Grande

Melwood

AB

BR

CB

CB

CB

CB

CB

CB

CB

Alameda

Franklin

Westmoreland

Melrose

Palomas

Grande

Melwood

AB

BR

CB

CB

CB

CB

CB

CB

CB

Alameda

Franklin

Westmoreland

Melrose

Palomas

Grande

Melwood

AB

BR

CB

CB

CB

CB

CB

CB

CB

Alameda

Franklin

Westmoreland

Melrose

Palomas

Grande

Melwood

AB

BR

CB

CB

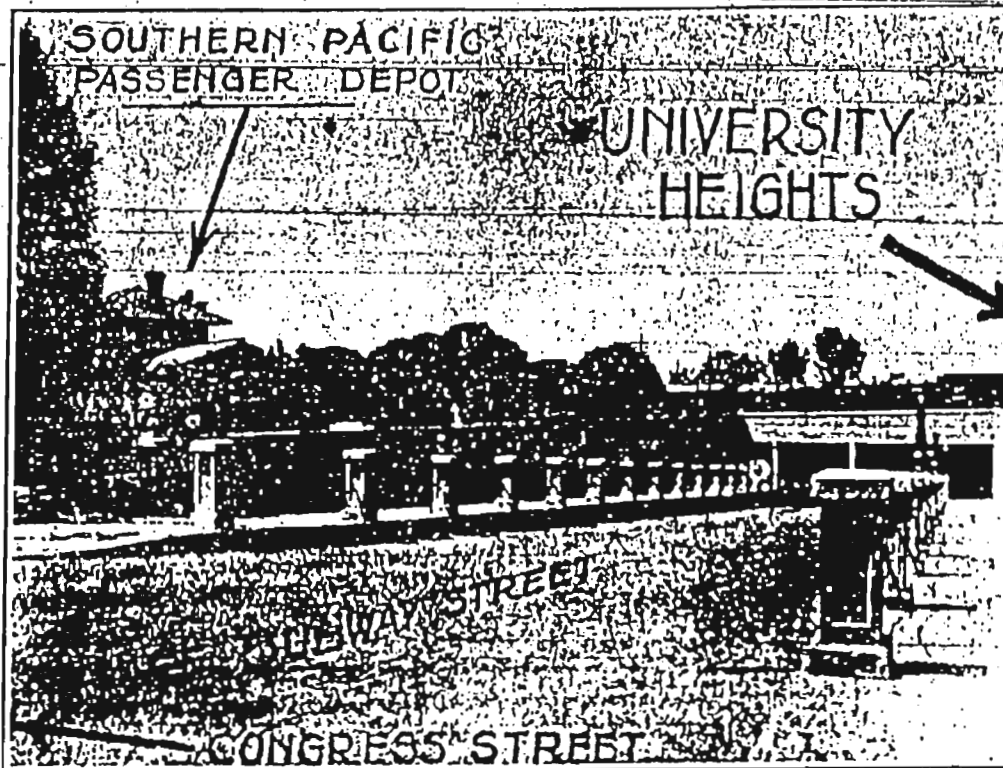
CB

UNIVERSITY HEIGHTS

Is Now Half Mile Nearer Congress Street

As a Result of the Opening of

THE NEW SUBWAY



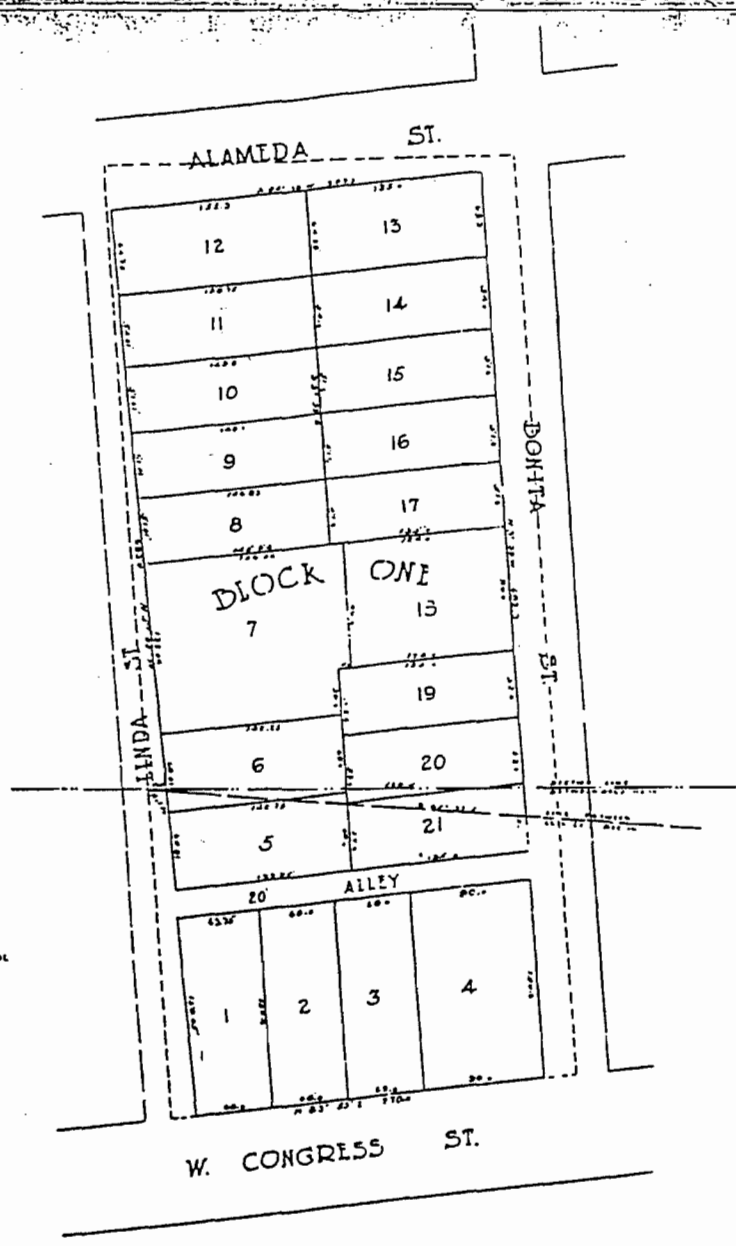
WE ALREADY HAVE: The State University, the only High School in the City, Playground, City Park, Broadway Boulevard Leading to the New Country Club, Electric Street Car Service and Now the NEW SUBWAY.

W. E. MURPHEY, Sole Agt.

55 West Congress St. Real Estate, Insurance, Mines and Loans

Phone 84

How a Machine Does Our Bookkeeping

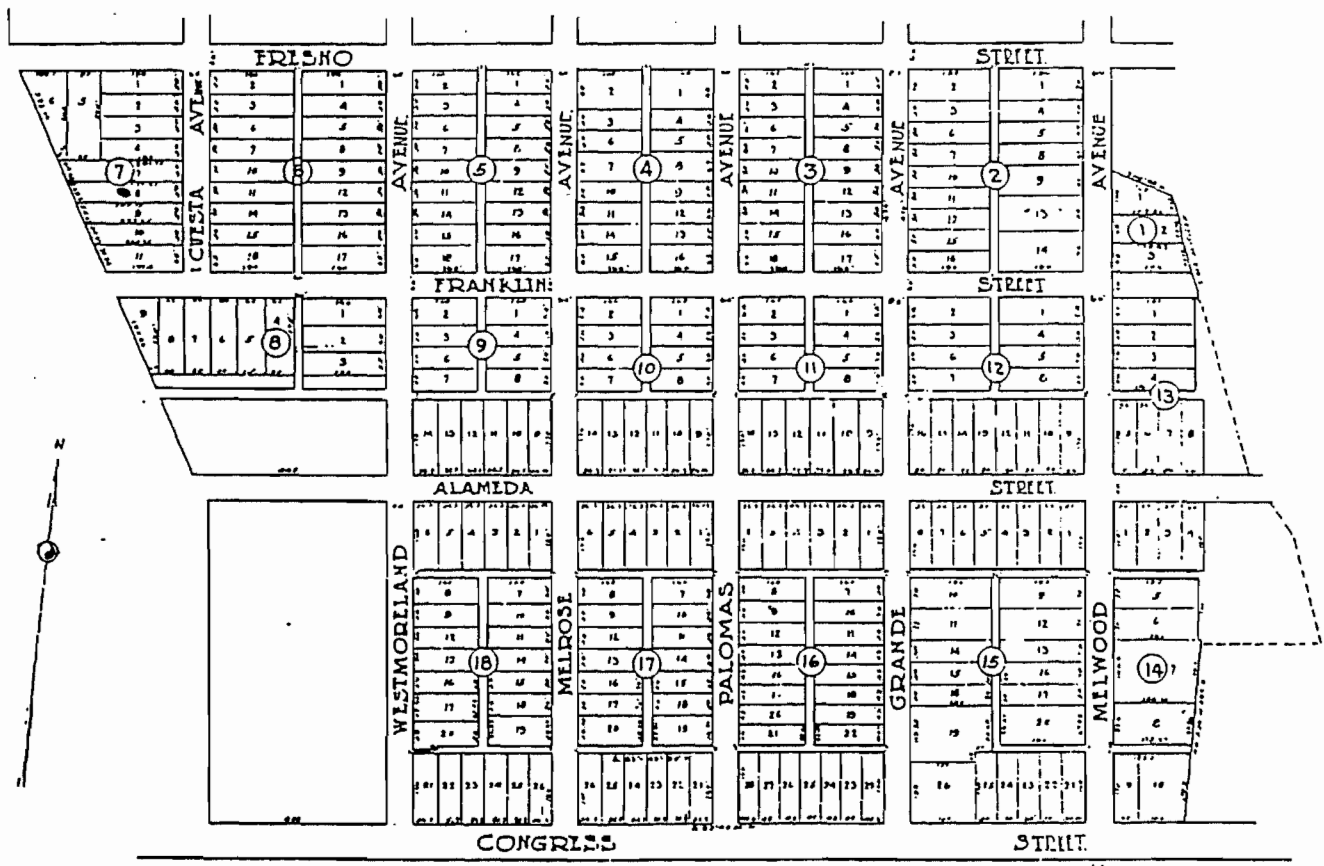


Shows portions of M 77 City of Tucson, Ariz. N.T.S.D. BDL
 owned by C. B. Wagoner & Co. Inc.

C. H. Wagoner 13
 7th St.
 10 St. N.
 3 Maple & Park
 36

J. E. Small

MAP OF BLOCK ONE OF THE
W. CONGRESS ST. ADD
 TO THE CITY OF TUCSON, ARIZ.
 L. C. WILKINSON, C.E. MAY 1913
 SCALE 1" = 100'



All maps and surveys are filed in the County Clerk's Office in San Diego County California.

All streets are 20 feet wide.

The survey was prepared from the information of the owner of the land.

The streets and alleys shown on this map are hereby dedicated to the use of the public as streets and alleys, except that the owner hereby reserves all rights and the right for the use of said streets and alleys for utility, light and power lines, telephone lines, gas lines, and other public lines, and for the use of any other public utility.

The undersigned hereby certifies that the same are true and correct.

Witness my hand and seal of office this 14th day of March 1904.

John W. D. ...

John W. D. ...

John W. D. ...

John W. D. ...

John W. D. ...

Deeds and surveys of lots are on file in the County Clerk's Office in San Diego County California.

The survey was prepared from the information of the owner of the land.

The streets and alleys shown on this map are hereby dedicated to the use of the public as streets and alleys, except that the owner hereby reserves all rights and the right for the use of said streets and alleys for utility, light and power lines, telephone lines, gas lines, and other public lines, and for the use of any other public utility.

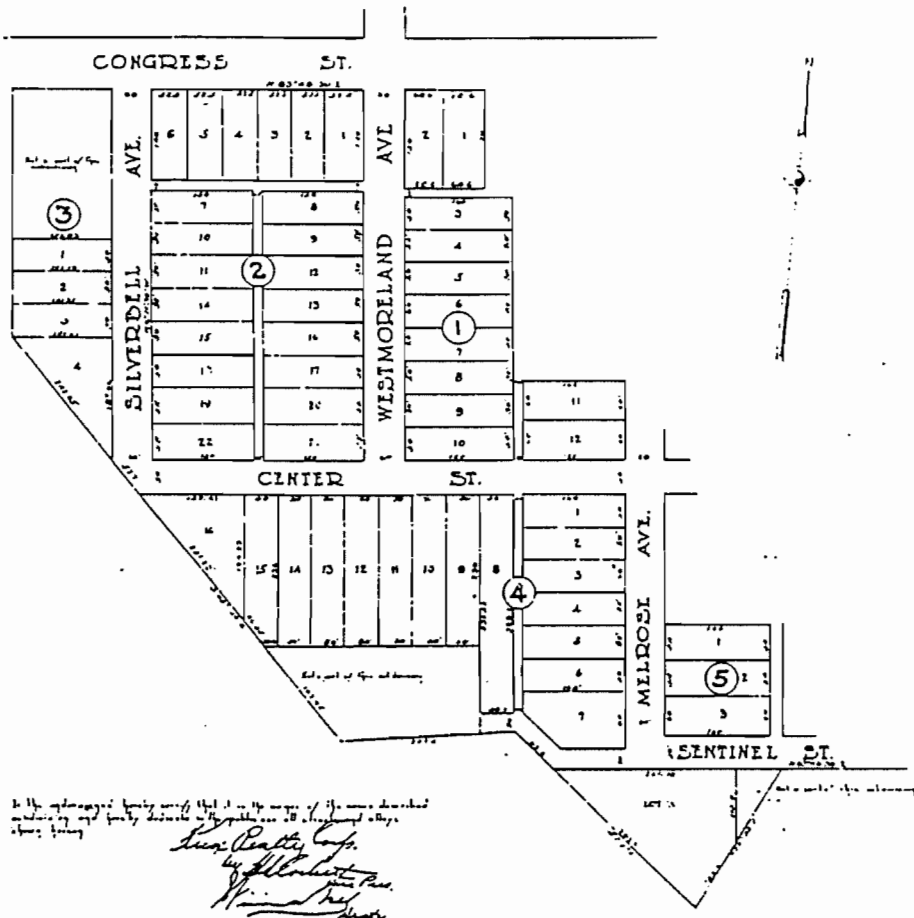
The undersigned hereby certifies that the same are true and correct.

Witness my hand and seal of office this 14th day of March 1904.

John W. D. ...

W. B. Selmon
 Supt.
 1930
 S. M. ...
 42
 E. E. ...

MENLO PARK
 PIMA CONDITIOA



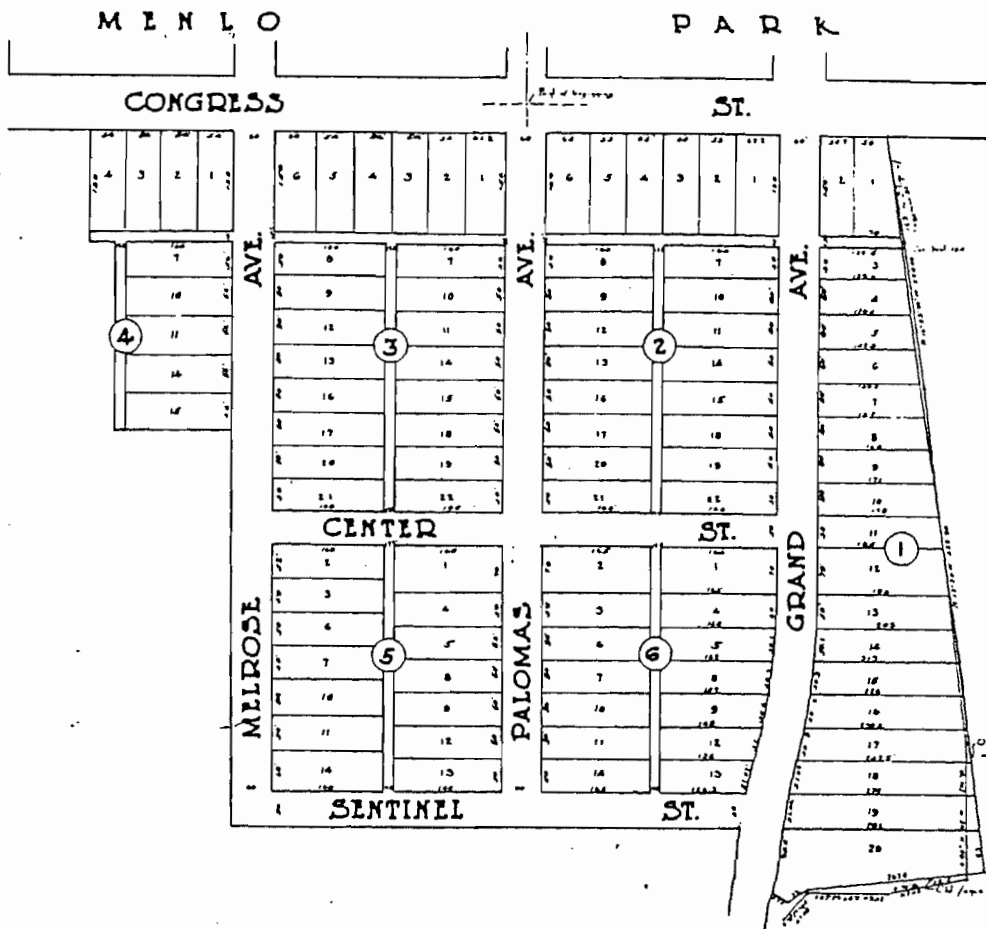
In the aforementioned survey, it is the purpose of the same described
 boundaries and parcels described in the plat are as follows:
 1. 1/2 Acre
 2. 1/2 Acre
 3. 1/2 Acre
 4. 1/2 Acre
 5. 1/2 Acre

*Surveyed by
 Geo. Reath Co.
 by J. H. ...
 W. ...*

Quadrat Realty Co.
 Oct 4 20
 3:48
 3 Maps + Plat
 116

R.B. ...

MENLO PARK ANNEX - PLMA CO. ARIZ.
 BEING A SUBDIVISION OF A CERTAIN TRACT OF LAND
 AND LOTS IN THE ...



H.E. Schwanen
 July 16 20
 11:40 A
 3 Maps - Plat

R.B. Quinn

NOTE

1. All streets are 200' wide and parallel to West Congress St.
 2. All Avenues are 100' wide and all right angles to West Congress St.
 3. The point of beginning of this survey is the corner of the corner line of Melrose Ave. Menlo Park and West Congress Street.
- The streets and alleys shown on this map are hereby dedicated to the use of the public, subject to the various local ordinances relating to the use of such streets and alleys for electric light and power lines, telephone lines, water lines and other public lines, drains and connecting ditches.

Real Realty Corporation of M. Pacheco
 by *Richard G. Pacheco & Pacheco*
 Attorney at Law
Henry & Schwanen
 Surveyors

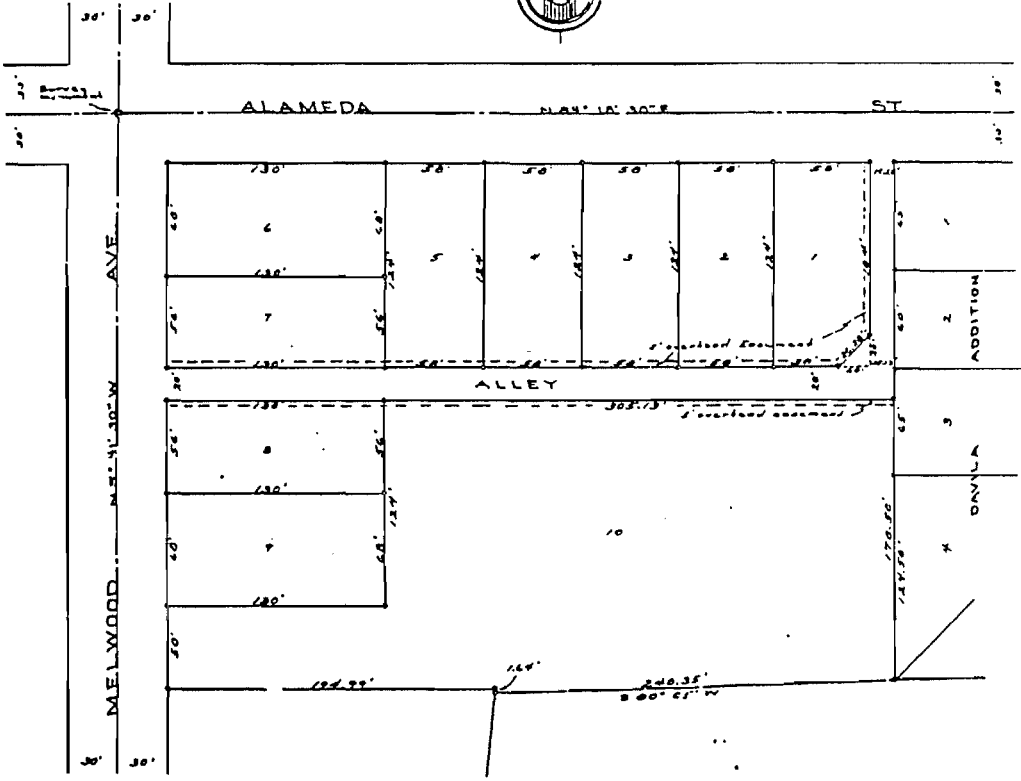
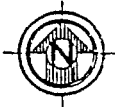
STATE OF ARIZONA
COUNTY OF PIMA

This plat was acknowledged before me this 16th day of July 1920 by J.M. Pacheco and Richard G. Pacheco, his wife and by R.C. Quinn as true counterparts and being a Surveyor of the State of Arizona, and by Henry & Schwanen, Surveyors a company organized by Henry & Schwanen, Surveyors.
 My Commission expires March 6, 1924.

Mc J. Myers
 Surveyor

SOUTH MENLO PARK

PIMA COUNTY, ARIZONA
 BEING A SUBDIVISION OF LAND IN THE TOWNSHIP 16 N. RANGE 13 E. COUNTY OF PIMA, STATE OF ARIZONA
 PLAT NO. 11



DEDICATION

We, the undersigned, hereby certify that we are the sole owners of the land contained in this subdivision, and that we agree to said subdivision in the manner shown herein. We hereby dedicate to the use of the public forever all streets and alleys shown herein, not heretofore dedicated.

Harold C. Schmalen
Husband & Wife

STATE OF ARIZONA)
COUNTY OF PIMA)

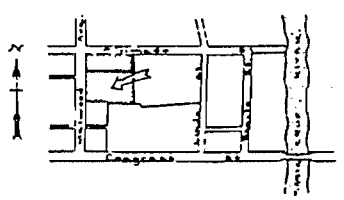
The foregoing instrument was acknowledged before me on the 27th day of December 1924 by Harold C. Schmalen and Hazel W. Schmalen, husband and wife.

Helen Cole
NOTARY PUBLIC

My Commission expires: 8-2-25

No. 1028 Fee \$10.00
STATE OF ARIZONA)
COUNTY OF PIMA)
Filed at the request
of Harold C. Schmalen
Date: December 13, 1924
Time: 1:26 P.M.
Book 22 Page 28
Witness my hand and
official Seal on the
day and year above
written.
Anna Williams
PIMA COUNTY RECORDER
By Anna Williams
COUNTY RECORDER

LOCATION MAP



Approved by the City and County
Planning and Zoning Commission.
M. H. [Signature] DATE: Dec. 30/24
CARTER
Approved: [Signature]
CITY ENGINEER

I, Ivan P. Hawkins, Clerk
of the City of Tucson, hereby
certify that this Plat was
approved by the Mayor and
Council on the 27th day of
December 1924.
Ivan P. Hawkins
CITY CLERK

I certify that this Plat
is drawn and based on a survey
made by me in December 1924.
Edward W. Carter
REGISTERED LAND SURVEYOR



**MAP OF
RESUBDIVISION OF PART OF BLK.
MENLO PARK ADD'N.**
BEING A RESUBDIVISION OF LOTS 1-2-3-4
& 5 & 6 & RE-ALIGNMENT OF THE NORTH
LINE OF BLK. 14 OF MENLO PARK AS RECORDED
BK. 3 OF MAPS & PLATS, PG. 131, AND THE
SUBDIVISION OF THAT PART OF LOTS 3 & 4
SEC. 11, T. 18 N. R. 10 E., S. 22 E., P. M. COUNTY, ARIZ.
LYING SOUTH OF ALAMEDA ST. AND WEST OF
DAVILA ADDITION

SCALE: 1" = 40' DECEMBER, 1924

AUTHORITY FOR SUBDIVISION AND DEDICATION:

THE CITY OF TORONTO, A MUNICIPAL CORPORATION, HEREBY WARRANTS THAT IT IS THE ONLY PARTY HAVING ANY RIGHTS OR INTEREST IN THE LAND SHOWN ON THIS PLAN, AND WELSHES THAT AND CONFIRMS THE SAME IN THE MANNER SET FORTH HEREIN.

[Signature]
CITY ENGINEER
CITY OF TORONTO

STATE OF CALIFORNIA
COUNTY OF ALAMEDA

BEFORE ME, Notary Public, on this 15th day of June, 1955, before me appeared _____, known to me to be the person whose name and residence address is on the return of the City of Toronto, and being authorized to do so as shown by the above instrument and the records thereof, he acknowledged to me the foregoing.

AGENCY APPROVALS:

THE CITY ENGINEER HAS REVIEWED THE SUBDIVISION AND DEDICATION MAP AND FINDS THAT THE SAME COMPLY WITH THE REQUIREMENTS OF THE SUBDIVISION MAP ACT AND THE SUBDIVISION MAP REGULATIONS AND THAT THE SAME ARE IN ACCORDANCE WITH THE CITY OF TORONTO ZONING BY-LAW AND THE CITY OF TORONTO SUBDIVISION MAP ACT AND THE SUBDIVISION MAP REGULATIONS.

[Signature]
CITY ENGINEER
CITY OF TORONTO

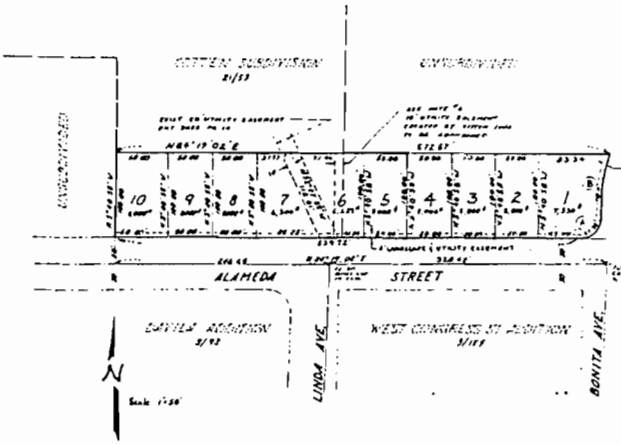
[Signature]
CITY ENGINEER
CITY OF TORONTO

LEGEND

- 1. 10' WIDE STRIP - TRUNK ALL LINES
- 2. 10' WIDE STRIP

CURVE DATA

- A. 85° 35' 25" 120' 31.5' 23.15' 33.97'
- B. 10° 14' 59" 136.41' 78.1' 33.6' 78.0'



CERTIFICATION OF SURVEY:

I HEREBY CERTIFY THAT THIS PLAN REPRESENTS A SURVEY MADE BY ME OR BY A LICENSED SURVEYOR AND THAT THE FRONTIER CORNERS AND MONUMENTS SHOWN ON THIS PLAN ARE IN ACCORDANCE WITH THE CITY OF TORONTO SUBDIVISION MAP ACT AND THE SUBDIVISION MAP REGULATIONS.

[Signature]
CITY ENGINEER
CITY OF TORONTO

APPROVAL:

I, DONALD BROWN, CLERK OF THE CITY OF TORONTO, HEREBY CERTIFY THAT THIS PLAN HAS BEEN APPROVED BY THE BOARD OF CONTROL OF THE CITY OF TORONTO AND THAT THE SAME IS IN ACCORDANCE WITH THE CITY OF TORONTO SUBDIVISION MAP ACT AND THE SUBDIVISION MAP REGULATIONS.

[Signature]
CITY CLERK
CITY OF TORONTO

RECORDING DATA:

BOOK OF RECORDS 35 PAGE 71
THIS INSTRUMENT WAS PREPARED AT THE OFFICE OF THOMPSON-MURPHY ENGINEERING, INC. ON JUNE 15, 1955, AND IS SUBJECT TO THE CITY OF TORONTO SUBDIVISION MAP ACT AND THE SUBDIVISION MAP REGULATIONS.

GENERAL NOTES:

- 1. All lots shown on this plan are to be shown as being subject to the provisions of the City of Toronto Subdivision Map Act and the Subdivision Map Regulations.
- 2. The area shown on this plan is 1.23 acres.
- 3. The area shown on this plan is 1.23 acres.
- 4. Any structure, and foundation, etc. of existing buildings and other structures, etc. shown on this plan are to be shown as being subject to the provisions of the City of Toronto Subdivision Map Act and the Subdivision Map Regulations.
- 5. Building permits will not be issued for any building or structure shown on this plan until the owner has obtained a building permit from the City of Toronto.
- 6. The subdivision is subject to the provisions of the City of Toronto Subdivision Map Act and the Subdivision Map Regulations.

PREPARED FOR:

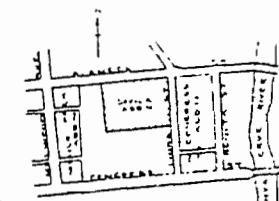
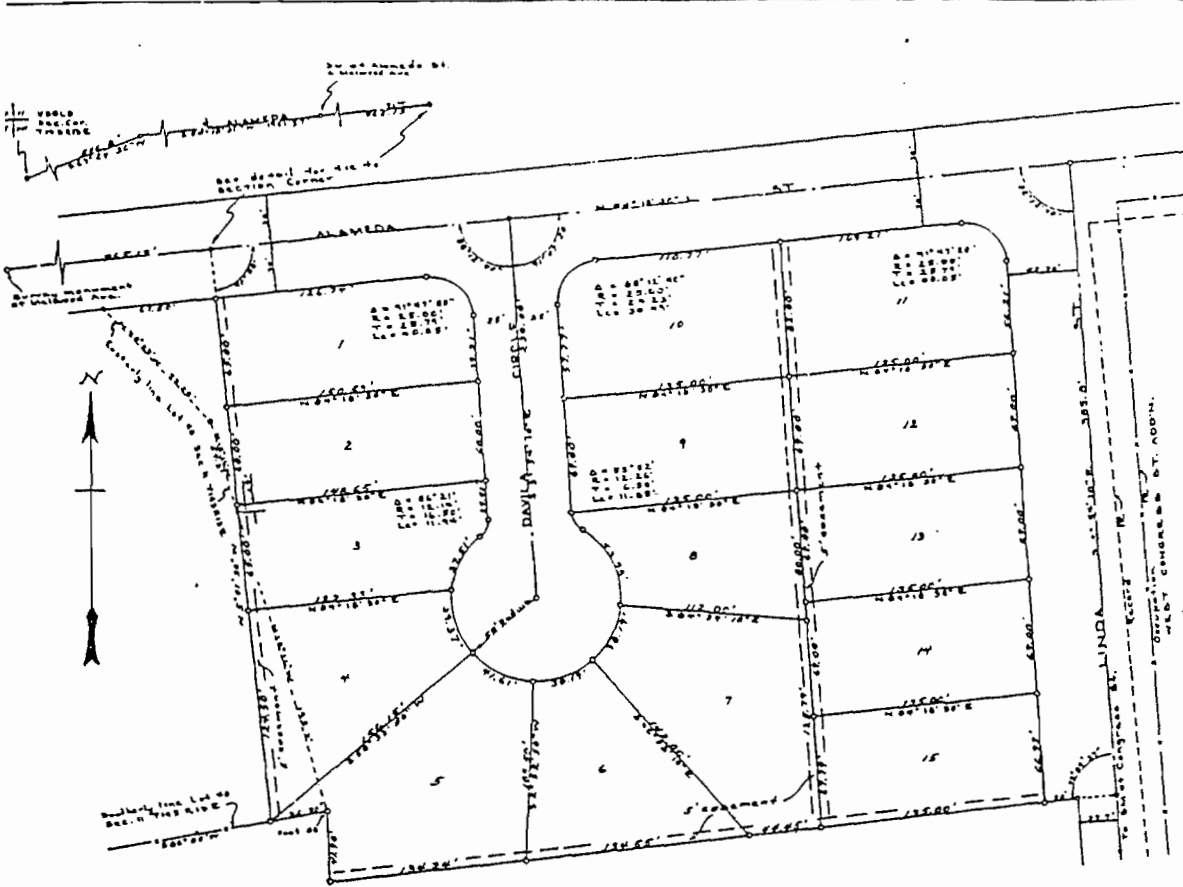
Donalson Development Corp.
1111 BAYVIEW AVE. TORONTO, ONT. M2H 3L1

PREPARED BY:

Thompson-Murphy Engineering, Inc.
1111 BAYVIEW AVE. TORONTO, ONT. M2H 3L1

RIO NUEVO - ALAMEDA SUBDIVISION
LOTS 1 1/2 to 10

THIS INSTRUMENT IS A PART OF SECTION 11 OF THE CITY OF TORONTO SUBDIVISION MAP ACT AND THE SUBDIVISION MAP REGULATIONS.



DEDICATION

We, the undersigned, hereby certify that we are the sole owners of the land contained in DAVILA ADDITION as shown on this plat, and agree to the subdivision in the manner shown hereon, and dedicate to the use of the public forever all streets, circles, and utility easements shown hereon not heretofore dedicated.

Wanda Davila
Wanda Davila

STATE OF ARIZONA }
 COUNTY OF PIMA }

This instrument was acknowledged before me this _____ day of _____ 1948 by Wanda Davila and Mary Davila, his wife.

Wanda Davila
 NOTARY PUBLIC

My commission expires: Feb 23, 1950

NO. 24354 FEE. 5.00

STATE OF ARIZONA }
 COUNTY OF PIMA }

Filed at the request of Wanda Davila
 Date: July 10 1948 1948
 Time: _____
 Book 8 Maps and Plats
 Page 92

Witness my hand and official seal of the day and year above written.

ANNA DILLINGER
 COUNTY RECORDER

BY: R. R. P...
 COUNTY RECORDER

Approved by the City Planning and Zoning Commission.
Will E. ...
 CHAIRMAN

Approved: L. J. ...
 CITY ENGINEER

Approved: ...
 COUNTY ENGINEER

CERTIFICATE

I, Carl M. Mitt, City Clerk of Tucson, Arizona hereby certify that this map was approved by the Mayor and Council of said City at a meeting held on the _____ day of _____ 1948.

Carl M. Mitt
 CITY CLERK

CERTIFICATE

I, Richard E. Kolb, Clerk of the Board of Supervisors of Pima County, Arizona, hereby certify that this map was approved by said Board on the _____ day of _____ 1948.

Richard E. Kolb
 CLERK OF BOARD OF SUPERVISORS

CERTIFICATE

I certify that this plat is drawn and based on a survey made by me on May 18, 1948.

Richard A. ...
 REGISTERED LAND SURVEYOR

PLAT OF
DAVILA ADDITION

BEING A SUBDIVISION OF PART OF LOT 38 & 40 SEC. 11 T14N R15E C & P D & M PIMA COUNTY, ARIZONA

SURVEYED BY: CORTZEN & CORTZEN
 REGISTERED LAND SURVEYORS

SCALE: 1" = 40' MAY 18, 1948

Menlo Park

The *IDEAL* Location for Your New *HOME*

Where the Best City Advantages Combined With the Most Desirable Suburban Environment Offer Exceptional Opportunity for

Investor

From the investor's viewpoint the present opportunity is remarkable. A personal inspection of the property will remove all doubt as to the inevitable future of *Menlo Park*, lying as it does in the direct path of the city's most favored Western growth.

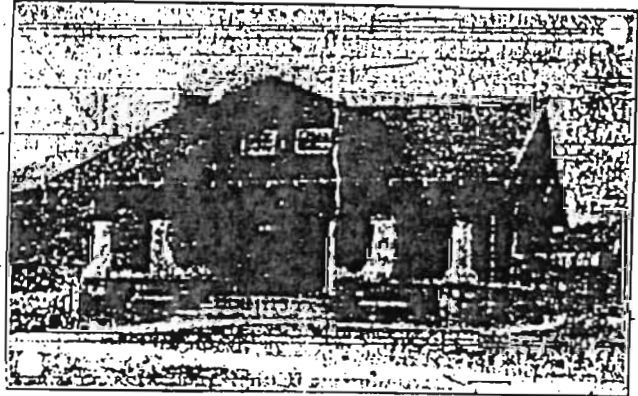
Remember, present purchasers are not required to pass through any pioneering period. Already a number of modern, down-to-the-minute bungalows have been erected and are occupied by a score of satisfied tenants. No interest is charged on deferred payments on lots sold on terms.



Every investor or prospective home builder owes it to himself to investigate the merit of *MENLO PARK* and its many advantages *TODAY*.

Large lots \$325 to \$550, easy terms—Beautiful new bungalows on terms like rent. Restrictions protective, but not prohibitive. Call or phone us at once for full particulars.

Home Builder



Located in one of the best residential districts in the city, overlooking some of the most pretentious homes in Southern Arizona, *Menlo Park* offers the utmost in value to be found in any local city subdivision today.

Only a short distance from the center of the business district possessing among other city advantages electricity, phones, city water, etc., with a soil which for fertility is unexcelled anywhere in Tucson, *Menlo Park* is truly an ideal spot for *YOUR NEW HOME*. No city taxes or assessments to pay.

TRUST DEPARTMENT

Southern Arizona Bank & Trust Co.

Selling Agents

Telephone 460

STOP

30 E. CONGRESS STREET

CHOCOLATE SPECTACLES

Chocolate Fudge, per pound. 25c

Fresh Strawberry Shortcake, per quart. 15c

(See the quart package)

BUTTONLATH

THE FACTS

Buttonlath is an improved lathing material in which the best features of Metal Lath, Wood Lath and Plasterboard construction are combined. It is made of metal mesh and the mesh is of a gauge so that it is eliminated. A more important feature of the Buttonlath is that it has

and estimates of frame bungalows.

6th Ave. and R. R. Crossing

Phone 227

Plans and Estimates furnished

Phone 900-J-2

WILLIAMS

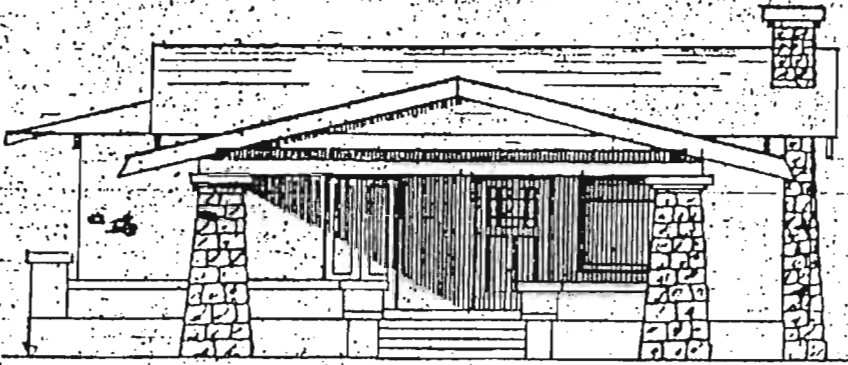
Real Estate, Lc

Kew. W. Whit

John M. McBr

State Avenue and Broadway.

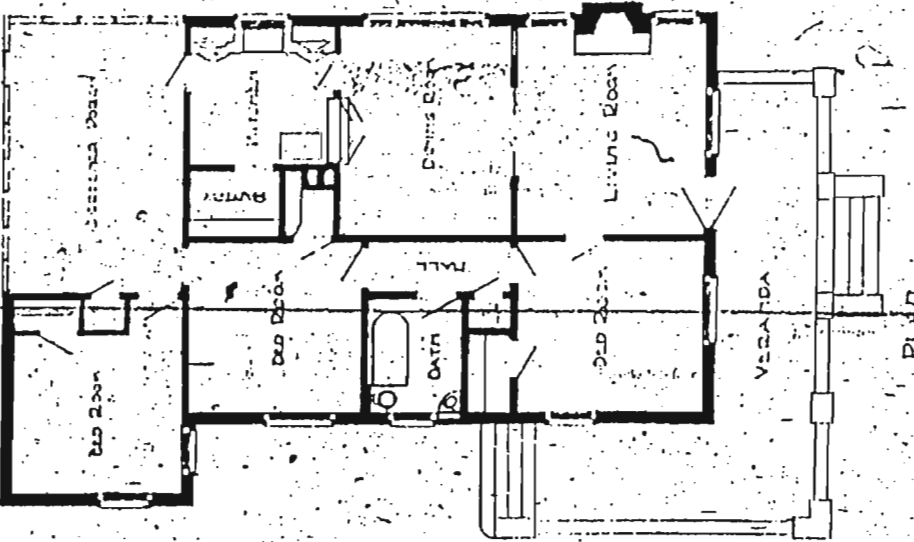
HOME BEAUTIFUL



FRONT

H. O. JAASTAD

ARCHITECT



The large open porches and spacious rooms are an attractive feature of this bungalow, designed by Mr. H. O. Jaastad. The living and dining rooms join through a wide sliding door, forming one large room with buffet, rustic fireplace and many windows. Three large bedrooms and a sleeping porch furnish sleeping accommodations. Large closets are in each of the bedrooms and the hall contains a closet for linen. A large pantry opens from the kitchen.

Throughout the house is complete in every detail. The exterior is of plastered brick, and a low shingle roof supported in front by stone columns give a rustic simplicity to the whole, wherein lies its attractiveness.

For further information address: HOME BEAUTIFUL EDITOR STAR

MENLO

Six Blocks From

Buy a lot and build in Tucson's lawns and shade trees, city water

LOTS SOLD ON LET US SHOW YOU

PIMA REAL

64 Nor

The Home Beautiful is Not Complete Unless It Is Furnished With

GAS

The Tucson Gas, Elec

Attractive Grounds

of a

Our line of lawn and garden tools, spades, shovels, trowels, hoes,

THE F. RO

Broadway and Sixth Avenue

We Let In

See us for an and light fixture ment of fixture

Russell Electric

MONEY FOR BUILDING

When Ready to Build Consult the Citizens' Building and Loan Association of Tucson

A.D. STARR
1914

Your