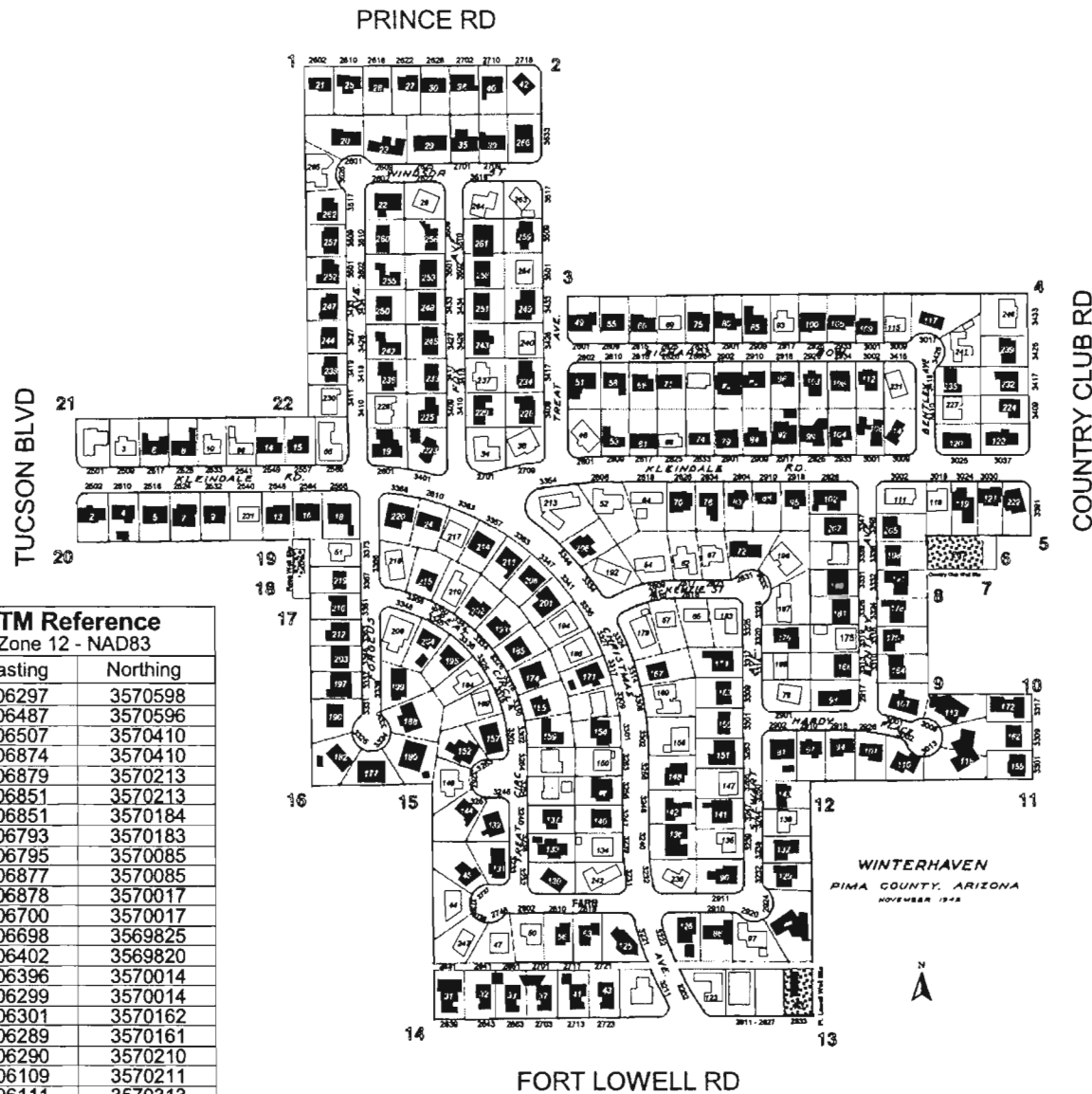






Historic Resource Survey
Through 1961 of the

WINTERHAVEN NEIGHBORHOOD

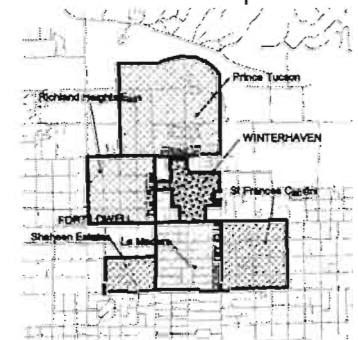
30 August 2003 Tucson Arizona
Preliminary Eligibility Recommendations



UTM Reference Zone 12 - NAD83		
Pt.	Easting	Northing
1	506297	3570598
2	506487	3570596
3	506507	3570410
4	506874	3570410
5	506879	3570213
6	506851	3570213
7	506851	3570184
8	506793	3570183
9	506795	3570085
10	506877	3570085
11	506878	3570017
12	506700	3570017
13	506698	3569825
14	506402	3569820
15	506396	3570014
16	506299	3570014
17	506301	3570162
18	506289	3570161
19	506290	3570210
20	506109	3570211
21	506111	3570313
22	506295	3570310

- 2501 Street Address
- 219 Inventory Number
-  Contributing Property to a Potential Historic District
-  Non-Eligible Property Due to Integrity
-  Non-Eligible Property Due to Age
- 1 UTM Reference Point
-  Wellsites - Contributing

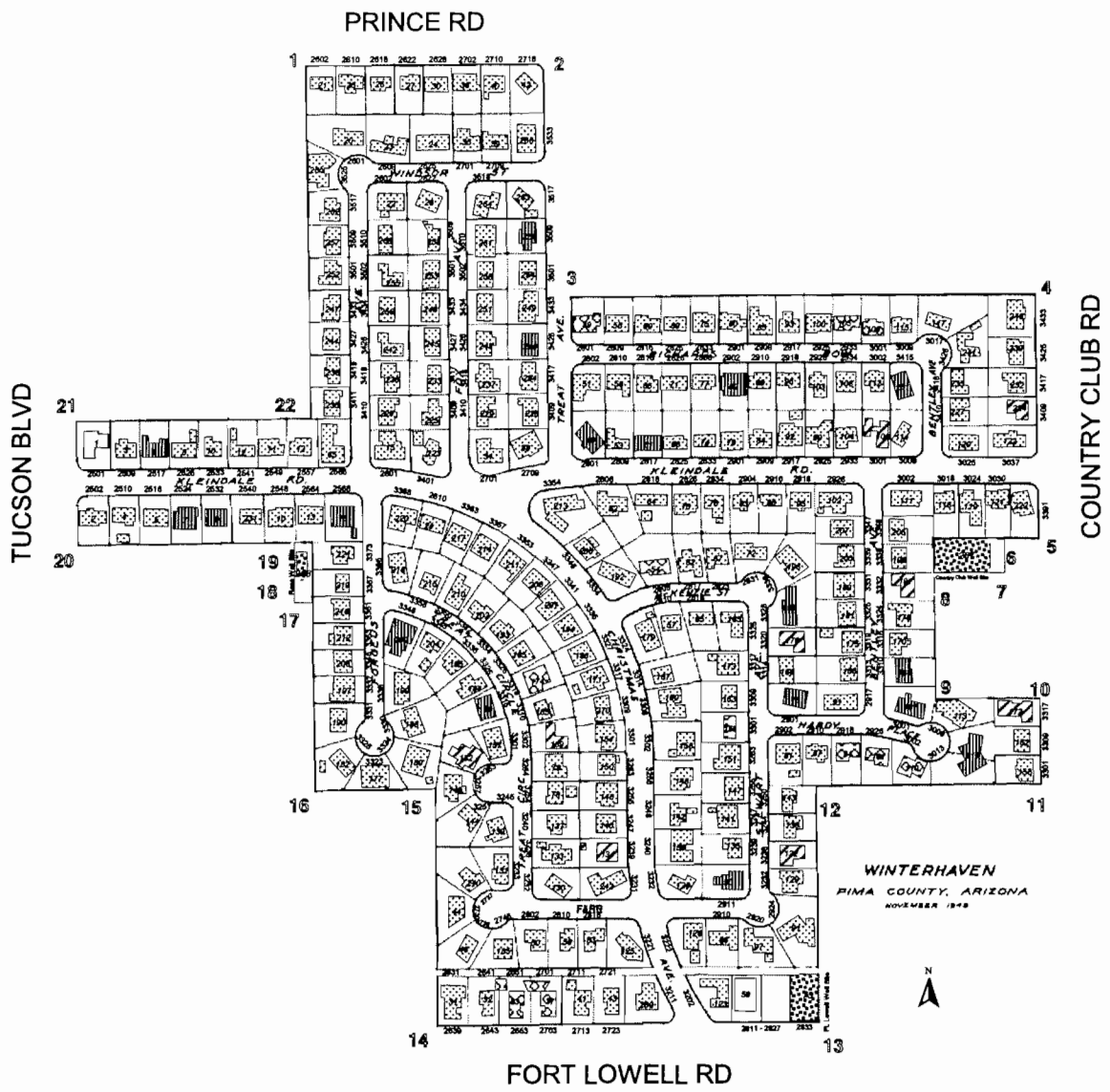
Index Map



Historic Resource Survey
Through 1961 of the

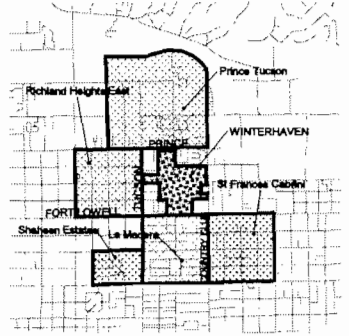
WINTERHAVEN NEIGHBORHOOD

30 August 2003 Tucson Arizona
Ranch House Styles in Winterhaven



- 2501 Street Address
- 219 Inventory Number
- Other
- Modern Ranch
- Minimal Ranch
- Transverse Ranch
- Traditional Ranch
- 1 UTM Reference Point
- Wellsites - Contributing

Index Map



WINTERHAVEN
PIMA COUNTY, ARIZONA
NOVEMBER 1949

Historic Resource Survey
Through 1961 of the

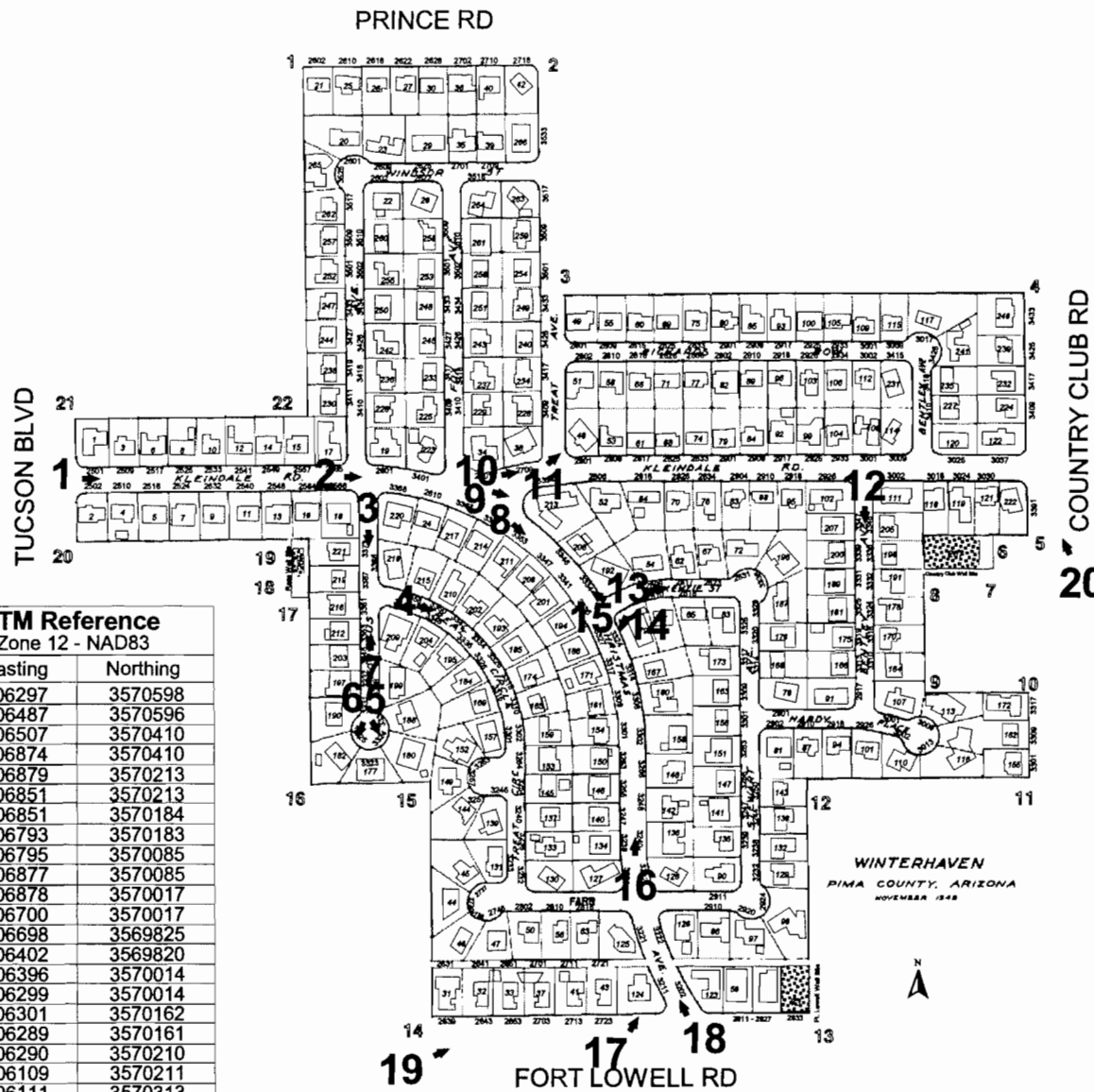
WINTERHAVEN NEIGHBORHOOD

30 August 2003 Tucson Arizona

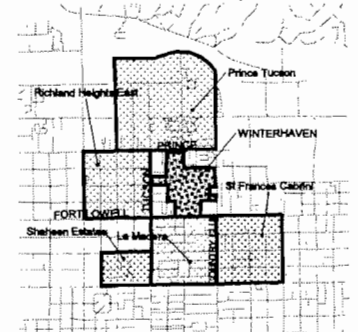
Site Photos

- 2501 Street Address
- 219 Inventory Number
- 1 UTM Reference Point
-  Wellsites - Contributing
- 1 Photo Locations

UTM Reference Zone 12 - NAD83		
Pt.	Easting	Northing
1	506297	3570598
2	506487	3570596
3	506507	3570410
4	506874	3570410
5	506879	3570213
6	506851	3570213
7	506851	3570184
8	506793	3570183
9	506795	3570085
10	506877	3570085
11	506878	3570017
12	506700	3570017
13	506698	3569825
14	506402	3569820
15	506396	3570014
16	506299	3570014
17	506301	3570162
18	506289	3570161
19	506290	3570210
20	506109	3570211
21	506111	3570313
22	506295	3570310



Index Map



United States Department of the Interior
National Park Service

National Register of Historic Places Continuation Sheet

Section Number 10 Page 43

WINTERHAVEN HISTORIC DISTRICT
Pima County, AZ

GEOGRAPHIC DATA

UTM REFERENCES

See attached boundary map

VERBAL BOUNDARY DESCRIPTION

See attached boundary map

BOUNDARY JUSTIFICATION

The Winterhaven Historic District nomination boundary corresponds to what has historically been considered the boundaries of the neighborhood. This defined area includes both contributing and non-contributing building and structures. Winterhaven occupies an area of 84.4 acres and this nomination includes all buildings and structures therein.