



June 24, 2015

Kolb Rd.: Connection to Sabino Canyon

COT Project No. SR8A



CITY OF
TUCSON

Department of
Transportation



RTA
Regional Transportation Authority

Agenda and Meeting Format

- 5:30 – 6:00 Open House
- 6:00 – 6:30 Presentation
- 6:30 – 7:00 Questions from Question Card
- 7:00 – 7:30 Speakers from Speaker Card
- 7:30 – 8:00 Open House

Comment forms available at meeting and online



CITY OF
TUCSON

Department of
Transportation



RTA
Regional Transportation Authority

Public Involvement Activities 2009-2015

- Public Meetings - 5
- Task Force Meetings – 5
- Homeowner/Neighborhood Meetings
- Business Outreach Meetings
- Site Visits
- Mailings
- Website
- 311 Comments Recorded



CITY OF
TUCSON

Department of
Transportation



RTA
Regional Transportation Authority

Public Involvement Outcomes 2009-2015

- 6 Major Alternatives Considered
- Roadway Alignment Shifted East
- Pedestrian Access Modifications
- Neighborhood Access Changes
- Landscaping
- Public Art



CITY OF
TUCSON

Department of
Transportation



RTA
Regional Transportation Authority

Project Update

- Design – 100% Complete
- Project Budget
 - RTA Funding - ~\$23M
 - Includes 1st Phase and Design Costs
 - Construction Estimate - ~\$15M
- Project Schedule
 - Public Meeting – June 2015
 - Bid Package To Procurement – Summer 2015
 - Bid Advertisement – Summer 2015
 - Bid Opening – Fall 2015
 - Pre-Construction Open House – Fall 2015
 - Begin Construction – Fall 2015
 - Complete Construction – Fall 2016



CITY OF
TUCSON

Department of
Transportation



RTA
Regional Transportation Authority

Project Objectives

- Relieve Traffic Congestion at the Tanque Verde/Grant/Kolb Intersection
- Improve Air Quality
- Improve Regional Mobility
- Provide a New Continuous North/South Arterial Roadway



CITY OF
TUCSON

Department of
Transportation



RTA
Regional Transportation Authority

Project Scope

- New 4-lane Roadway Extending Sabino Canyon Road From Tanque Verde Road to Kolb Road
- Includes:
 - Bike Lanes and Sidewalks
 - Roadway (Bridge) over Mullins Landfill
 - Bridge over the Pantano Wash
 - Drainage Improvements
 - Signal at West Udall Park Entrance
 - Signal at Kolb and Sabino Canyon
 - Public Art
 - Landscaping



CITY OF
TUCSON

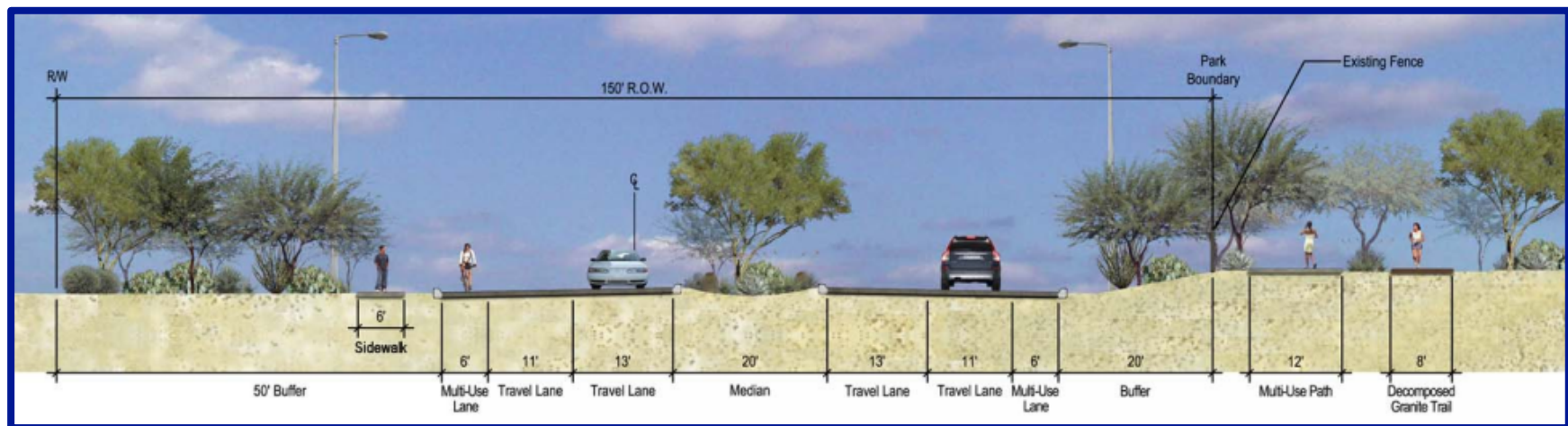
Department of
Transportation



RTA
Regional Transportation Authority

Bicycle/Pedestrian Connectivity

- ADA Compliant
- Connect Segments of Sidewalk
- Access to Udall Park From The South Via Connection To Pantano Linear Park
- Pantano Linear Park Grade Separation At New Pantano Bridge



CITY OF
TUCSON

Department of
Transportation



RTA
Regional Transportation Authority

Existing Traffic Conditions

- Tanque Verde, Kolb to Sabino Canyon
 - 2nd highest traffic volume in City
- Tanque Verde/Grant /Kolb
 - Worst LOS (Level of Service) in City
 - Highest CO₂ concentration in City



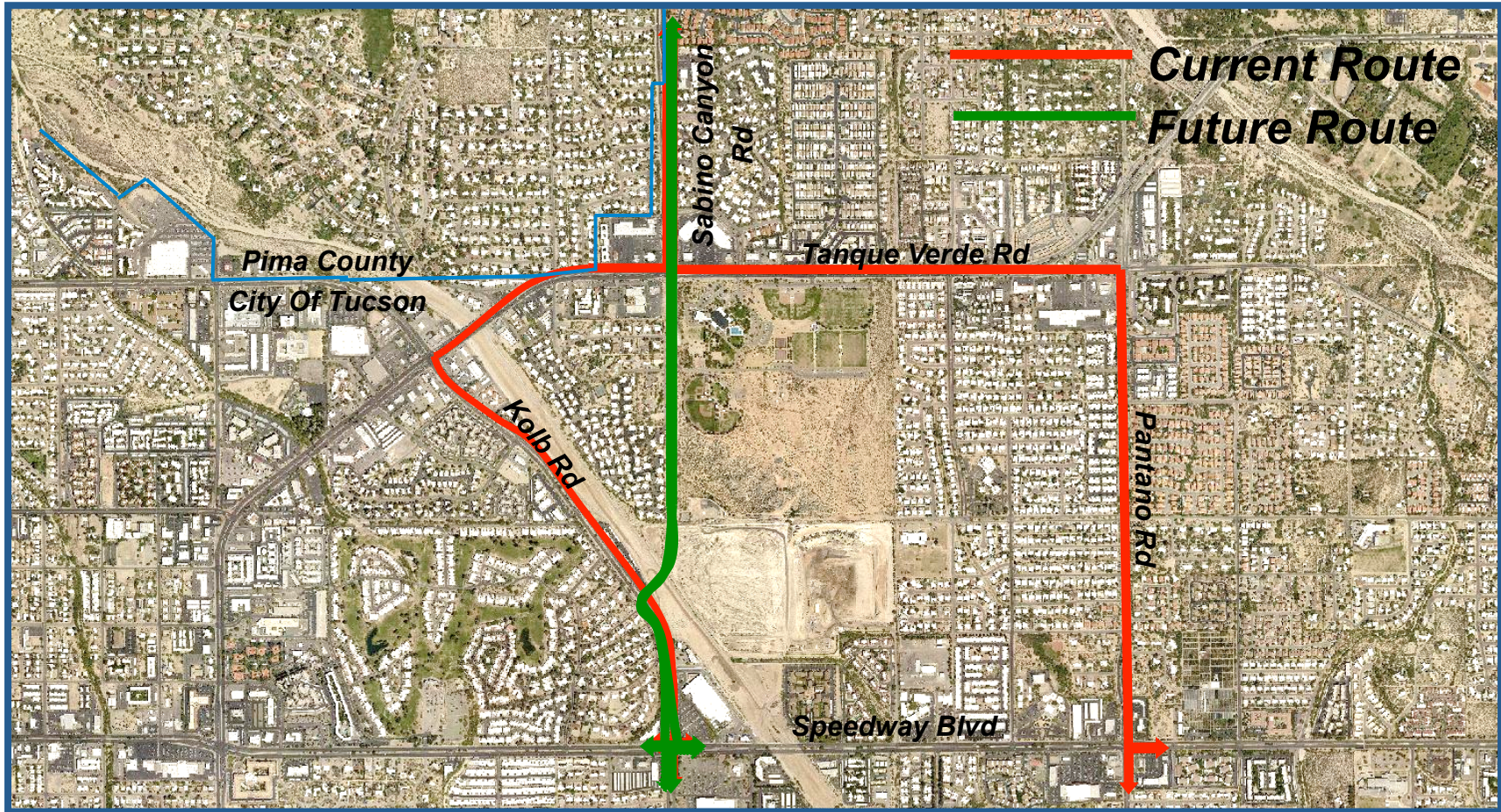
CITY OF
TUCSON

Department of
Transportation



RTA
Regional Transportation Authority

Changes in Travel Patterns with Project



CITY OF
TUCSON

Department of
Transportation



RTA
Regional Transportation Authority

Daily Volume and Delay Comparison (Existing Conditions vs. Opening Day With Project)



Intersection	Delay per veh		Variation (sec/veh)	% Change
	Existing	Opening Day		
T. Verde/Grant Rd/Kolb	93	43	-50	-54%
T. Verde/Sabino Canyon	102	56	-47	-46%
Speedway/Kolb	53	65	+13	+24%
Sabino Canyon/Kolb (NEW)	N/A	10	N/A	

- Reduction of over 200 hours of delay in the PM peak hour, each day



CITY OF
TUCSON

Department of
Transportation



RTA
Regional Transportation Authority

Daily Volume and Delay Comparison (2030 Without Project vs. 2030 With Project)



Intersection	2030 Delay per veh		Variation (sec/veh)	% Change
	Without Project	With Project		
T. Verde/Grant Rd/Kolb	171	80	-91	-53%
T. Verde/Sabino Canyon	136	119	-18	-13%
Speedway/Kolb	97	117	+20	+20%
Sabino Canyon/Kolb (NEW)	N/A	17	N/A	

- Reduction of over 350 hours of delay in the PM peak hour, each day



CITY OF
TUCSON

Department of
Transportation



RTA
Regional Transportation Authority

Environmental Documentation

- Biological Review (12/2014)
- Cultural Resources Survey (3/2013)
- Preliminary Initial Site Assessment (2/2015)
- Air Quality Report (3/2011)
- Noise Report (3/2013)
- Clean Water Act Permit (6/2015)
- Section 4(f) Evaluation (2/2015)
- Section 6(f) Evaluation (2/2015)
- Arizona Department of Environmental Quality Landfill Gas Realignment Approval (1/2011)
- Arizona Department of Environmental Quality Project Plan Approval (9/2014)
- **Mitigation Measures will be retained**



CITY OF
TUCSON

Department of
Transportation



RTA
Regional Transportation Authority



QUESTIONS?

Please fill out Question Card and hand to project team member

Contact Project Manager Joe Chase P.E.

Joe.Chase@Tucsonaz.gov

520-837-6619



CITY OF
TUCSON

Department of
Transportation



RTA
Regional Transportation Authority