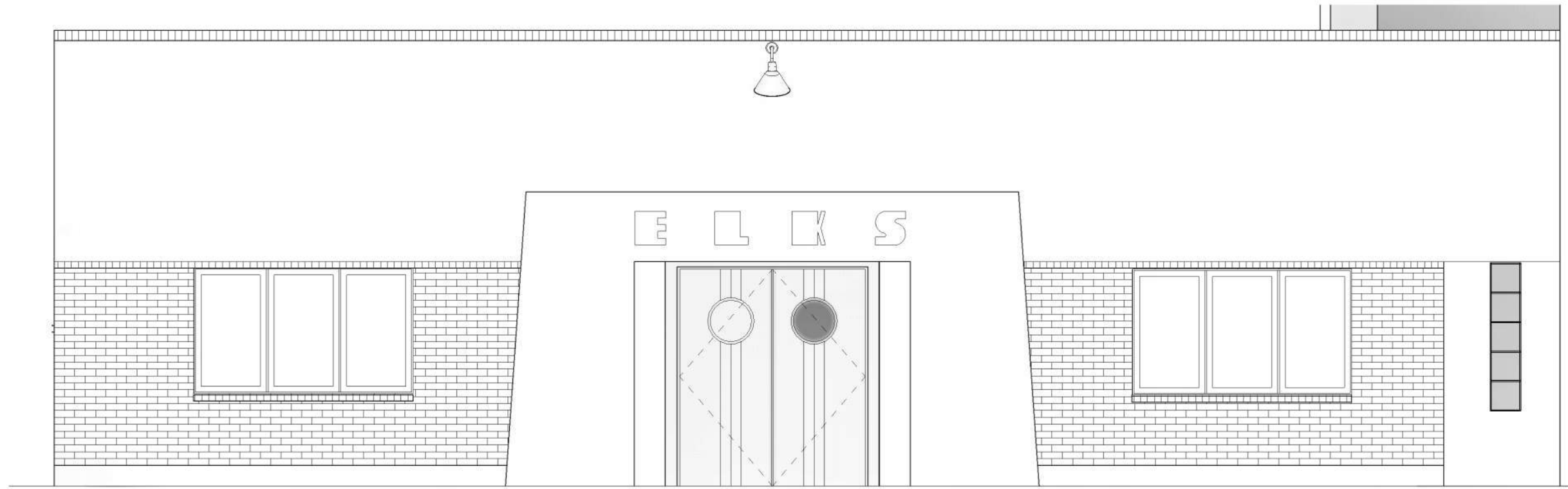


1 EAST MEYER ELEVATION
SCALE: 1/8" = 1'-0"

TEATRO CARMEN
REHABILITATION OF HISTORIC THEATER
HPZ 1.1

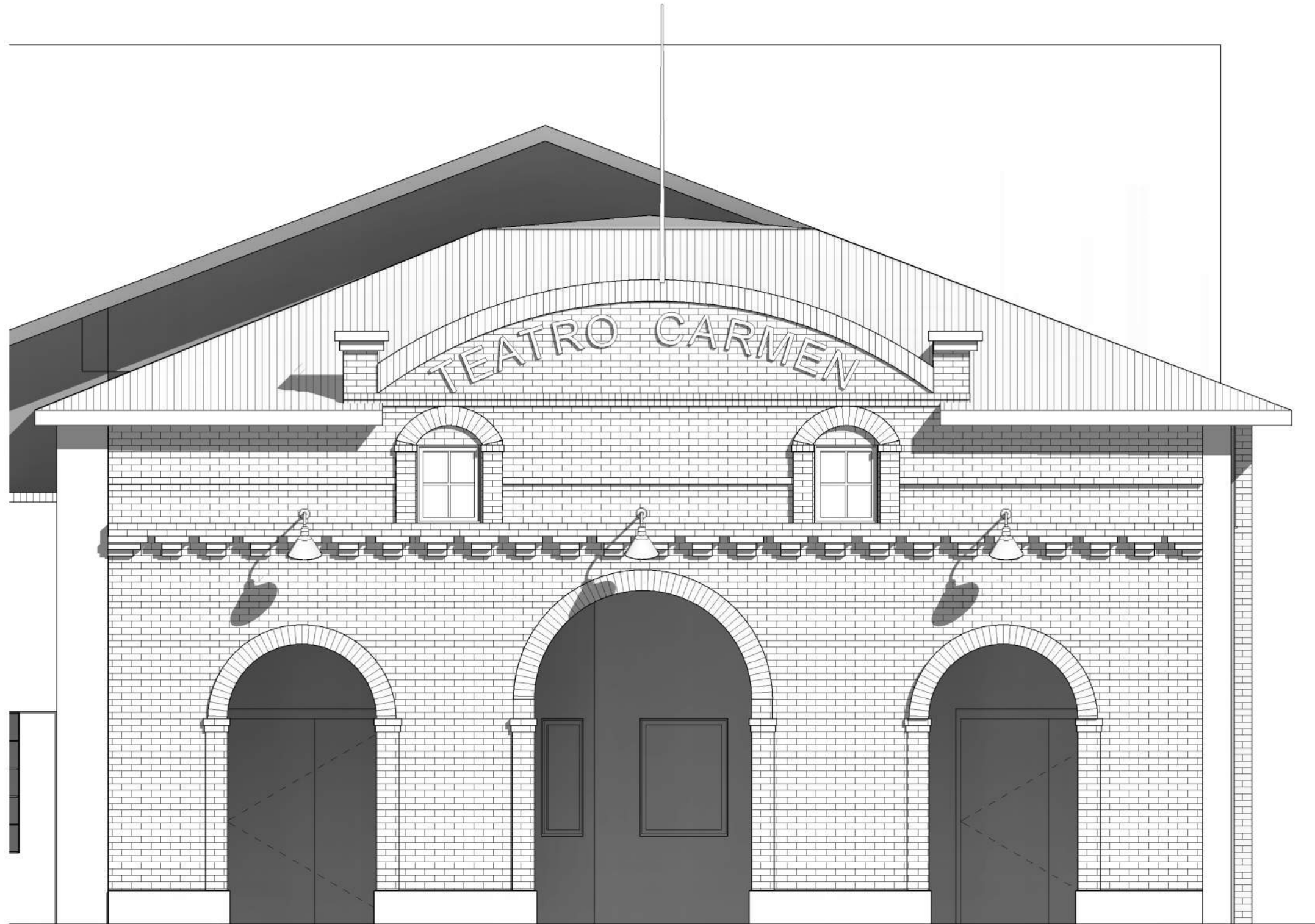
PMM
POSTER
MIRTO
McDONALD
ARCHITECTURE
PLANNING
PRESERVATION
317 N. COURT AVE. TUCSON, AZ 85701
PH 520.882.6310 | WWW.PMM.DESIGN



1 ELKS FACADE
SCALE: 1/4" = 1'-0"

- DE 'accession of film set mural. Coordinated with Arts Foundation for Tucson and Southern Arizona.
- Remove existing glass block, restore to 3 pane wood casement windows, per historic drawings
- New front doors to match historic drawings
- Install new light at historic location

TEATRO CARMEN
REHABILITATION OF HISTORIC THEATER
HPZ 1.2



- Carefully remove plaster from existing façade. Clean brick and re-point historic colored mortar
- Rehabilitate or replace wood windows to match existing
- Reconstruct front facade arches to original proportions.
- Install new lights at historic locations

1 **TEATRO CARMEN FACADE**
SCALE: 1/4" = 1'-0"

TEATRO CARMEN
REHABILITATION OF HISTORIC THEATER
HPZ 1.3

PMM POSTER MIRTO McDONALD
ARCHITECTURE
PLANNING
PRESERVATION
317 N. COURT AVE. TUCSON, AZ 85701
PH 520.882.6310 | WWW.PMM.DESIGN



ARIZONA HISTORICLOGACAL SOCITY - TUCSON, AZ - 1916 EST.

TEATRO CARMEN

REHABILITATION OF HISTORIC THEATER
HPZ 1.4

PMM POSTER MIRTO McDONALD
ARCHITECTURE
PLANNING
PRESERVATION
317 N. COURT AVE. TUCSON, AZ 85701
PH 520.882.6310 | WWW.PMM.DESIGN



UNIVERSITY OF ARIZONA ARCHIVE - I.B.P.O.E.W. TUCSON, AZ

TEATRO CARMEN
REHABILITATION OF HISTORIC THEATER
HPZ 1.5

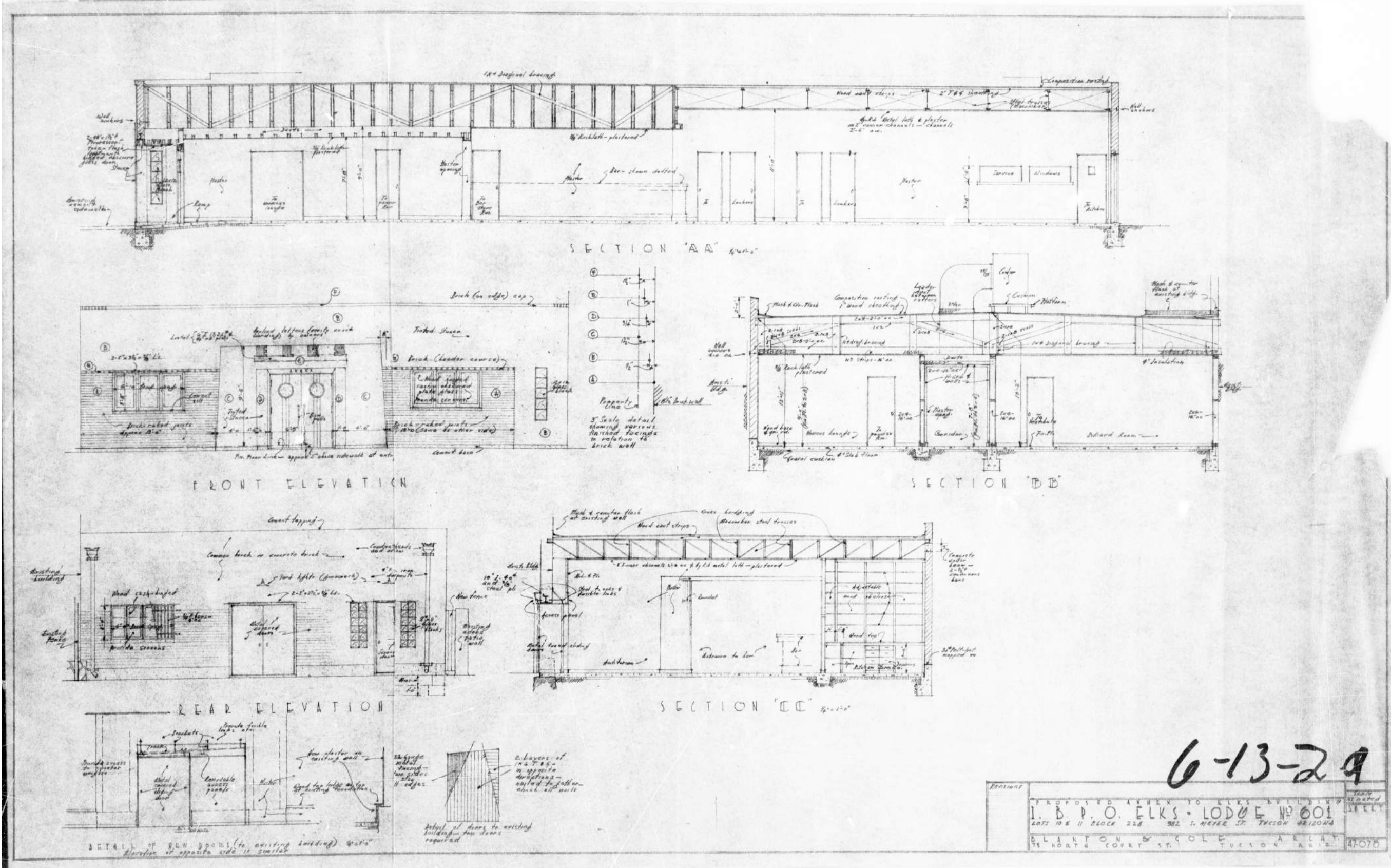
POSTER
MIRTO
McDONALD
ARCHITECTURE
PLANNING
PRESERVATION
PMM
317 N. COURT AVE. TUCSON, AZ 85701
PH 520.882.6310 | WWW.PMM.DESIGN



ARIZONA STATE HISTORIC PROPERTY INVENTORY - JULY, 1977

TEATRO CARMEN
REHABILITATION OF HISTORIC THEATER
HPZ 1.6

POSTER
MIRTO
McDONALD
ARCHITECTURE
PLANNING
PRESERVATION
PMM
317 N. COURT AVE. TUCSON, AZ 85701
PH 520.882.6310 | WWW.PMM.DESIGN



ORIGINAL DRAWINGS I.B.P.O ELKS LODGE - CITY OF TUCSON PSD ARCHIVE

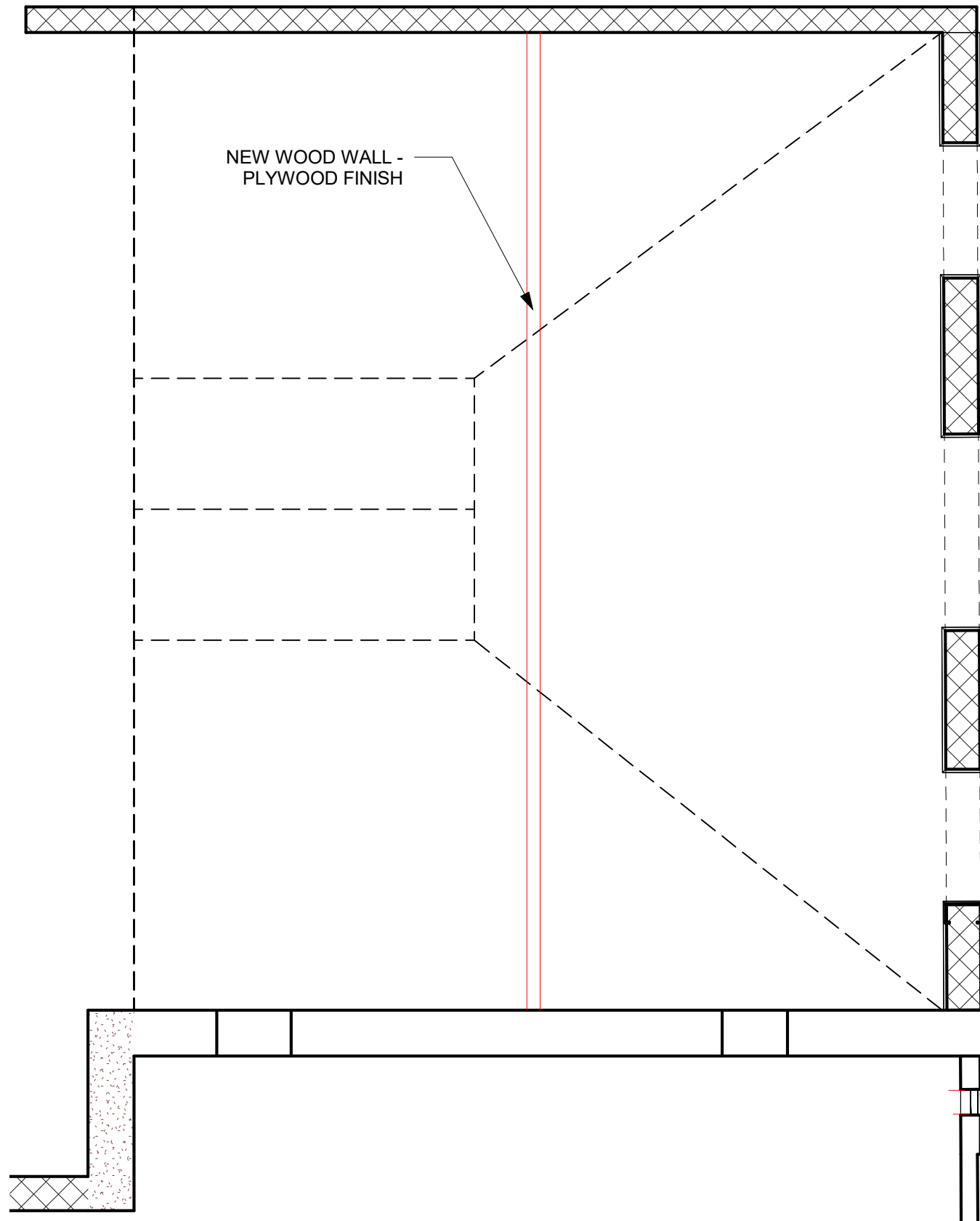
TEATRO CARMEN
REHABILITATION OF HISTORIC THEATER
HPZ 1.7

POSTER
MIRTO
McDONALD
ARCHITECTURE
PLANNING
PRESERVATION
PMM
317 N. COURT AVE. TUCSON, AZ 85701
PH 520.882.6310 | WWW.PMM.DESIGN

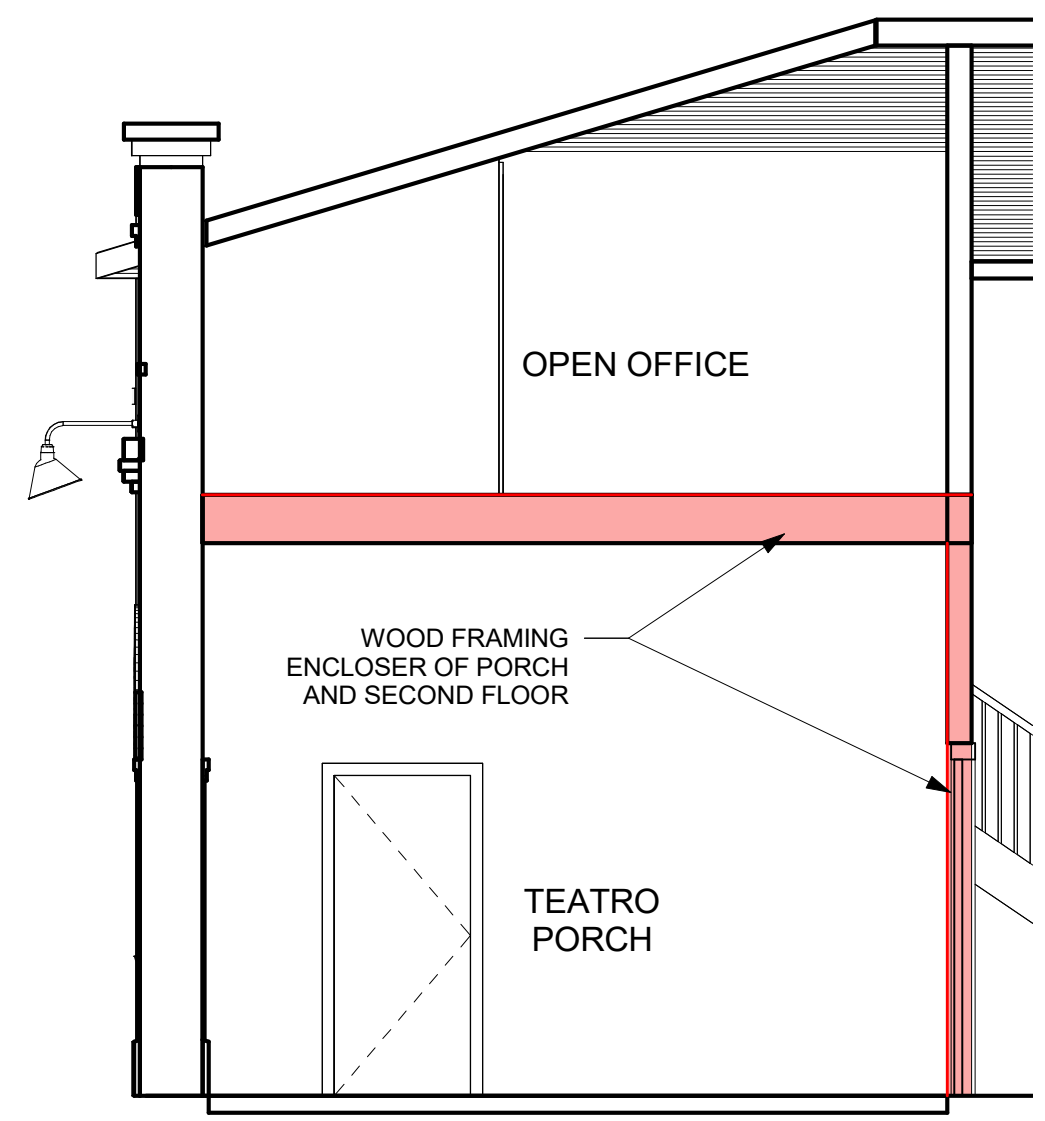


BOYS ON OUR SIDE - 1995

TEATRO CARMEN
 REHABILITATION OF HISTORIC THEATER
 HPZ 1.8



1 LEVEL 1 FACADE PHASE
SCALE: 3/16" = 1'-0"



2 FACADE PHASE PORCH FRAMINGS
SCALE: 1/4" = 1'-0"

TEATRO CARMEN
REHABILITATION OF HISTORIC THEATER
HPZ 1.9

PMM POSTER MIRTO McDONALD
ARCHITECTURE PLANNING PRESERVATION
317 N. COURT AVE. TUCSON, AZ 85701
PH 520.882.6310 | WWW.PMM.DESIGN



HISTORIC INTEGRAL COLORED MORTAR



HISTORIC INTEGRAL COLORED MORTAR

TEATRO CARMEN
REHABILITATION OF HISTORIC THEATER
HPZ 1.10